

**Z B A T I M I**

**NDERTIMI I TREGUT BU.**

**BASHKIA BULOQI**

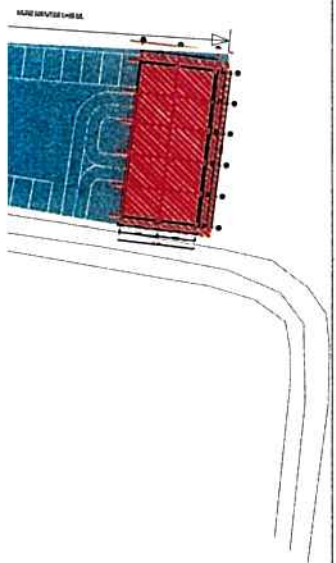
**“ALBGOLDING 2E”**



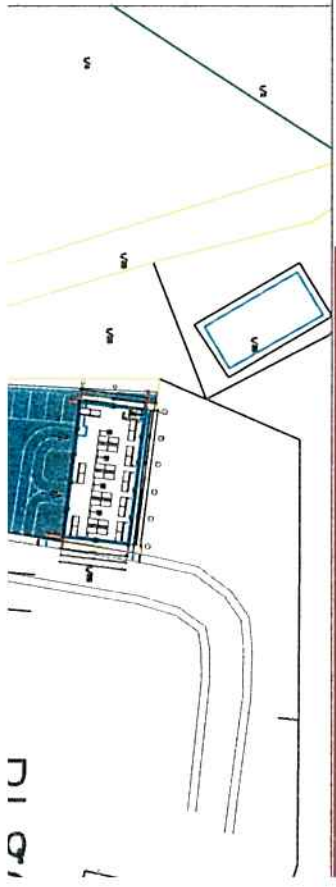
KR. / PASURISE 1/28  
 INDEKSI I HARTËS BZ2  
 ADRESA E PASURISË: L

KUFIZI	
VERI	- NR.P/
LINDJE	- NR.P/
JUG	- NR.P/
PERËNDIM	- NR.P/

PLAN VENDOSJA E OBJEKTIT SIPAS  
 HARTËS VEKTOR SH.1:1000



PLAN VENDOSJA E OBJEKTIT S  
 HARTËS KADASTRALE ZK.3694 SH



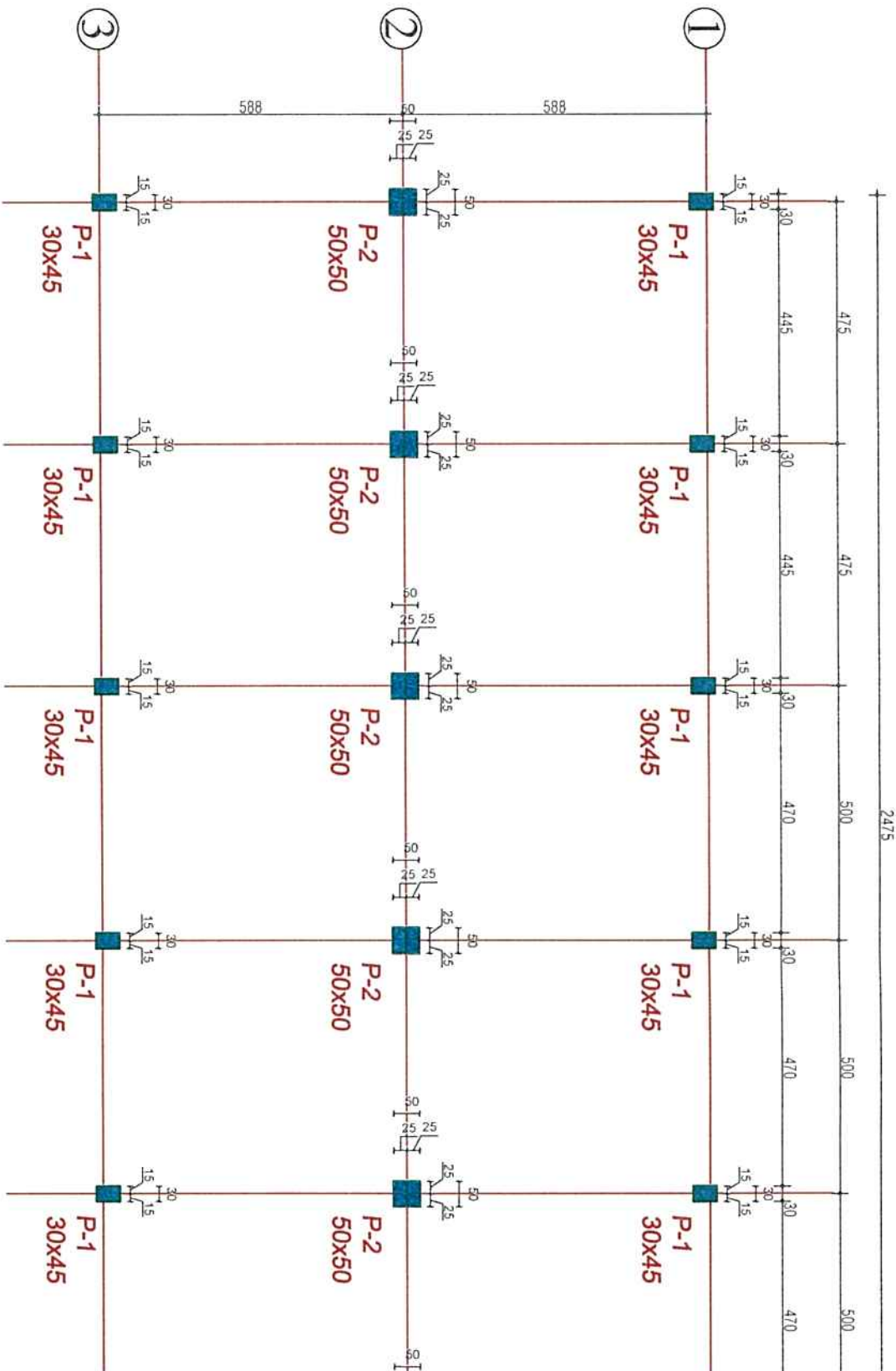
Ⓐ

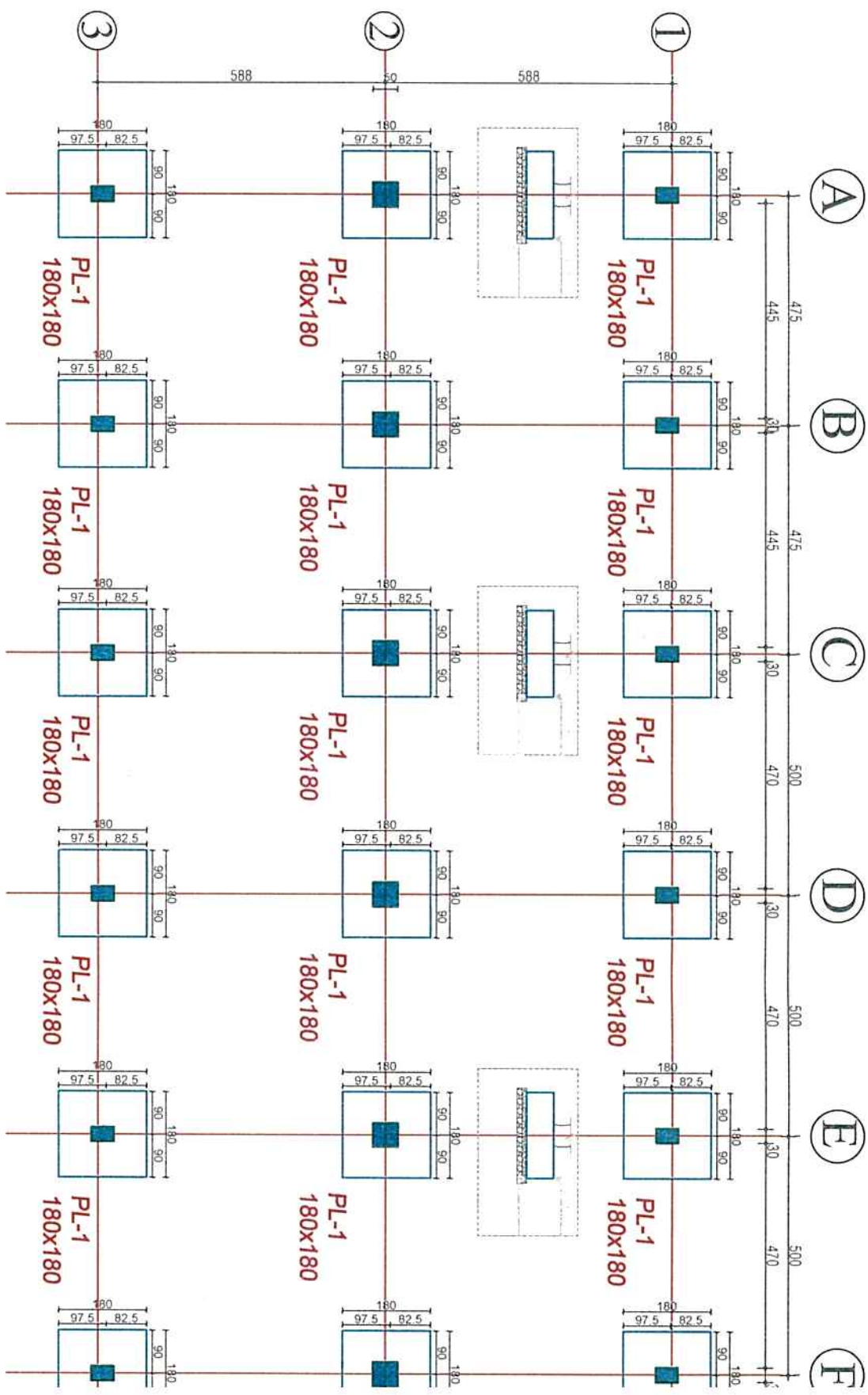
Ⓑ

Ⓒ

Ⓓ

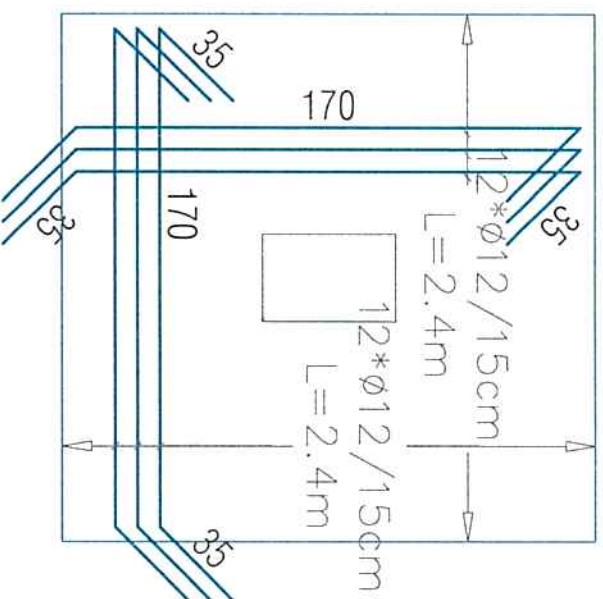
Ⓔ



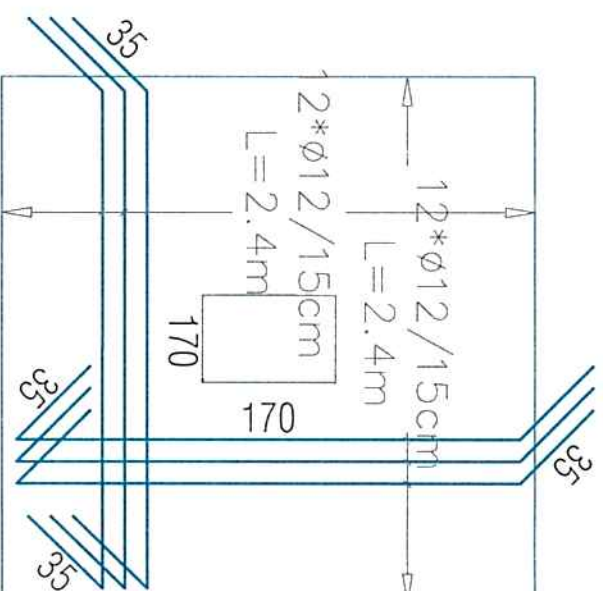


# Plint PL-1 180x180

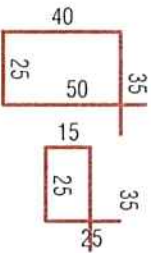
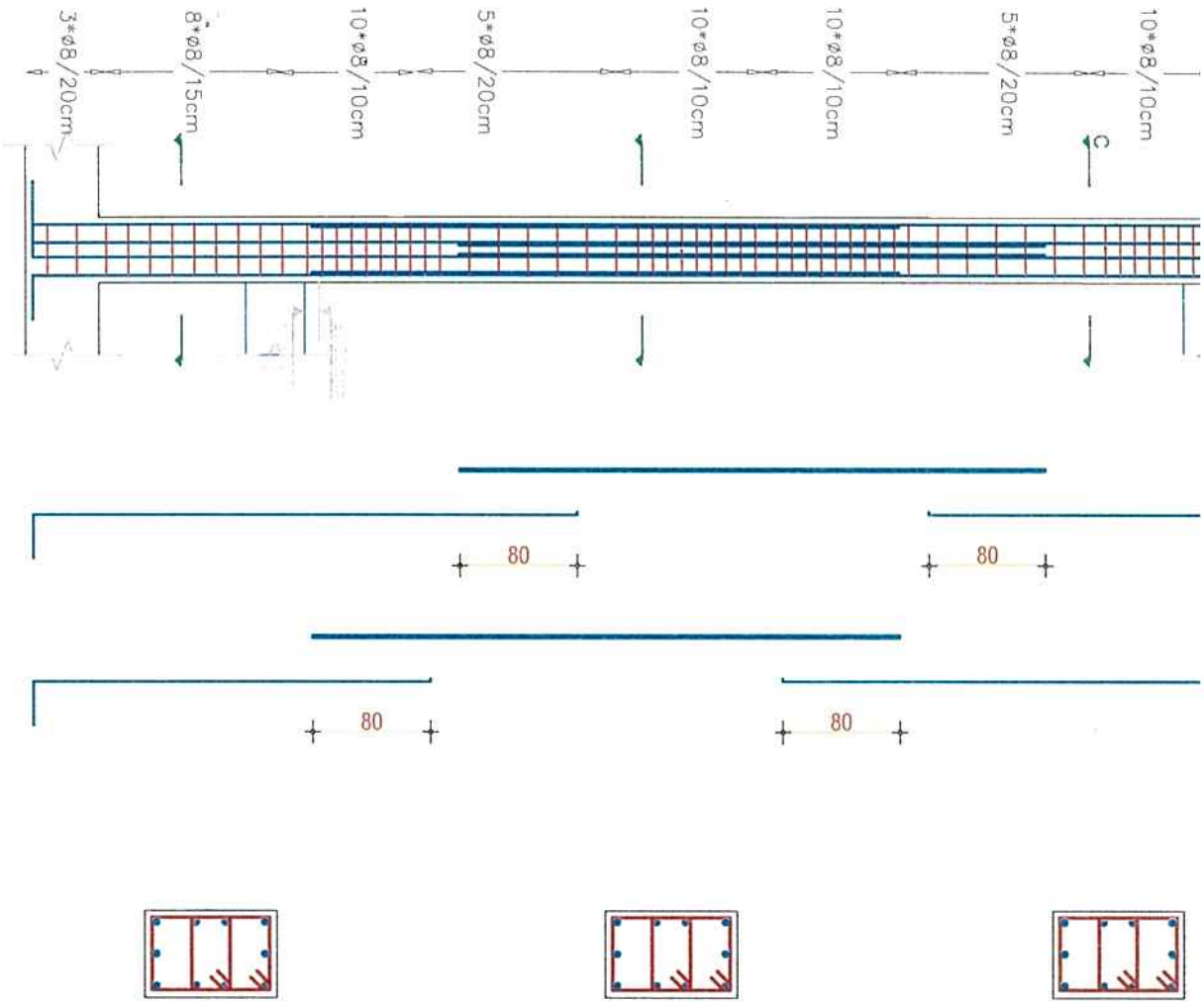
## ARMATURA POSHTE



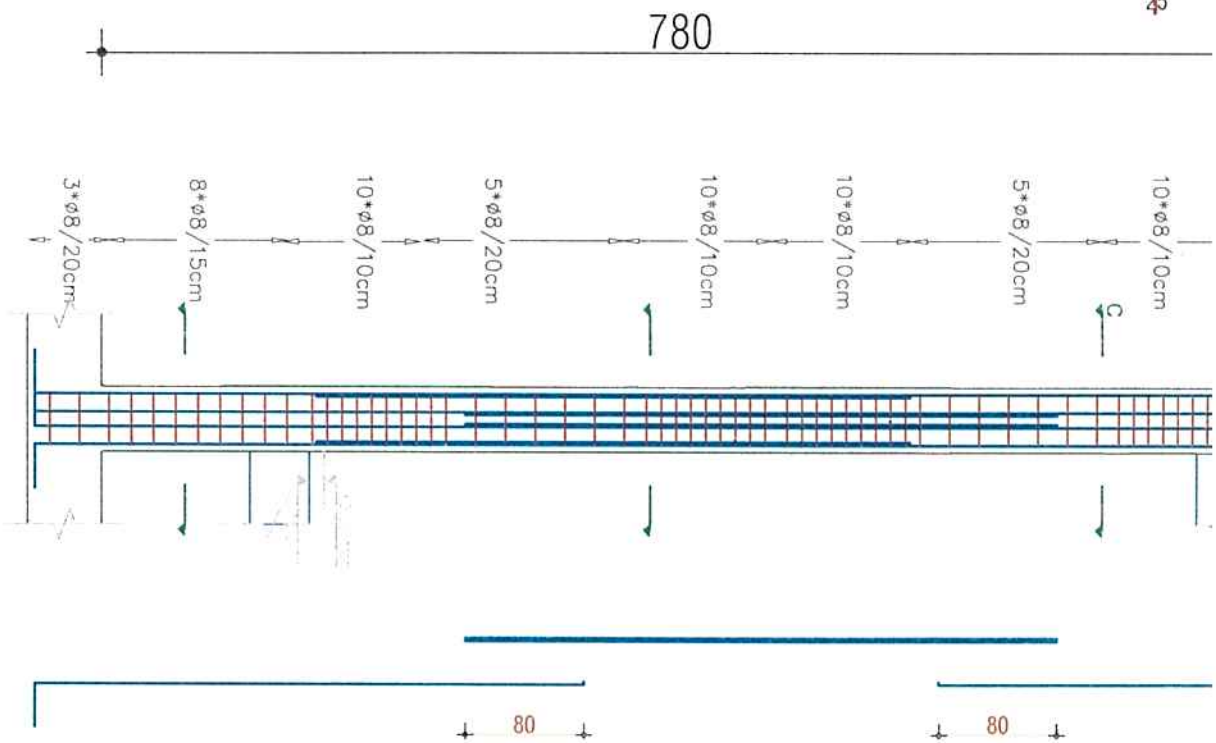
## ARMATURA SIPERME



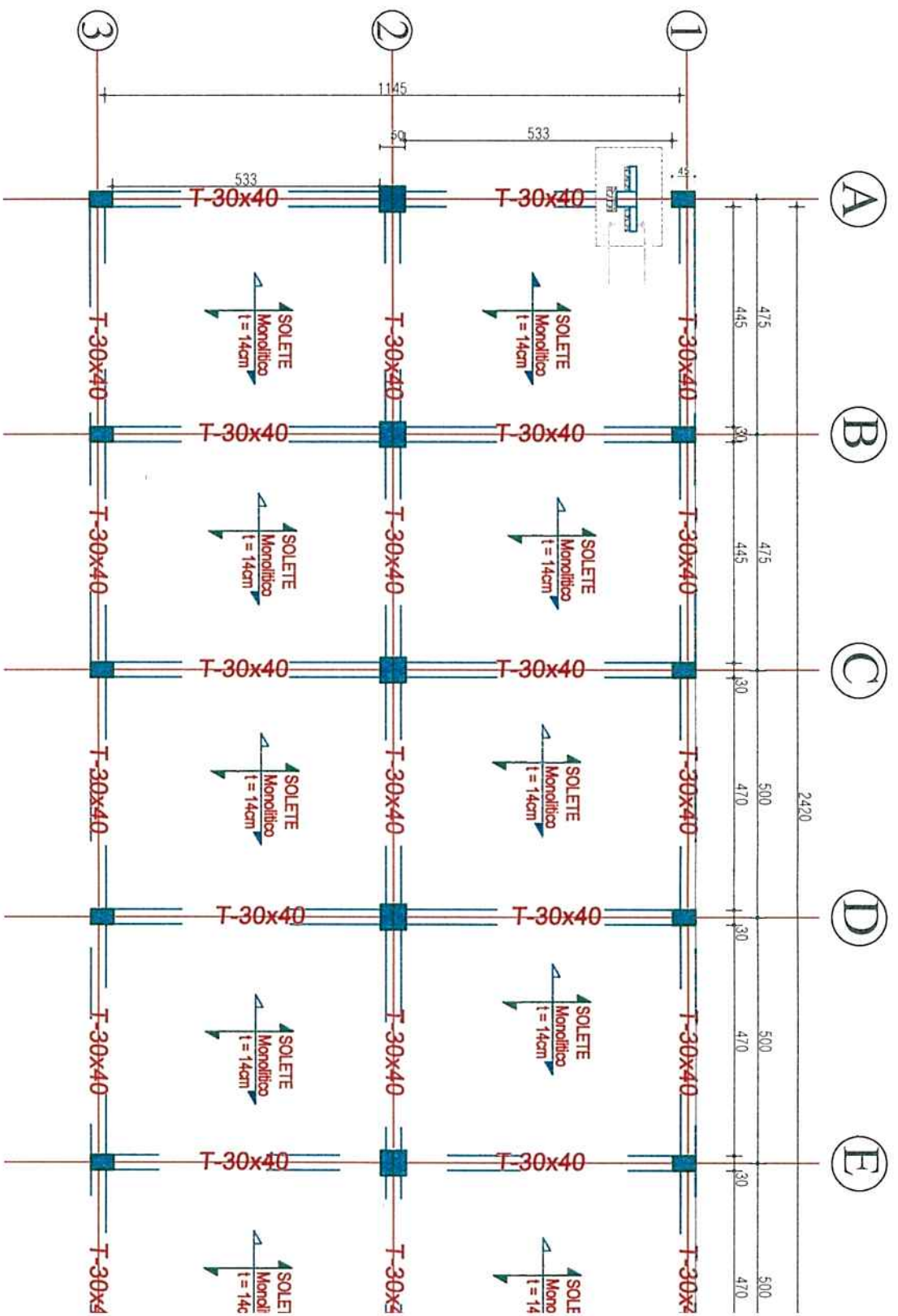
Elementi Struktural		Specifikimet e Hekurit					Hekur per Element				Pesha
Emri	Sasia	Nr.	Ø	Gjat.	Njesia	Gjattot	Ø	Gjat:ml	P.spec	Pesha	TOTALI
180x180		1	12	240	12	28.8	8	0.00	0.395	0.00	0
		2	12	240	12	28.8	10	0.00	0.62	0.00	0
		3	12	240	12	28.8	12	115.2	0.89	102.53	1846



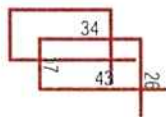
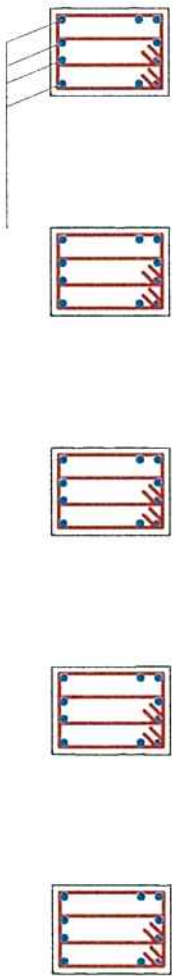
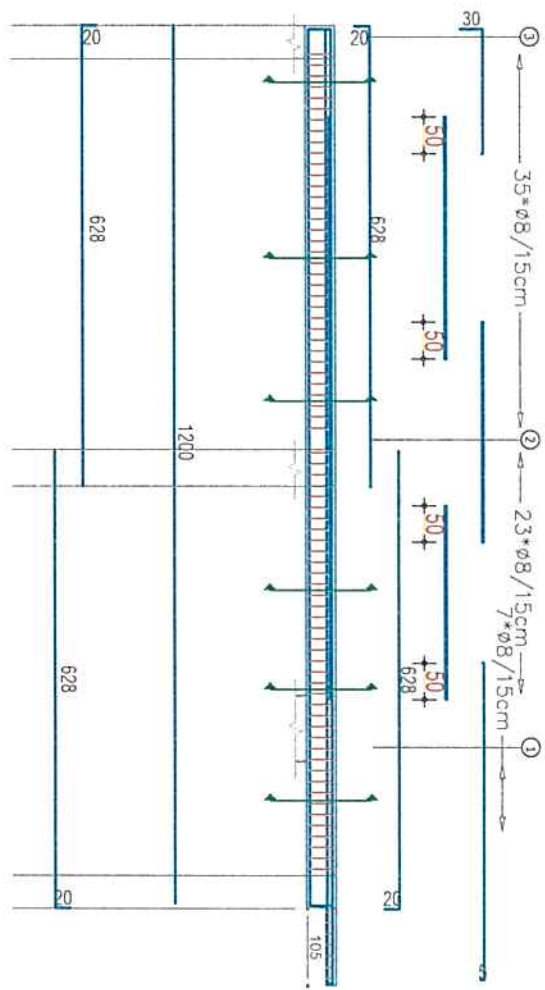
Elementi Struktural		Specifikimet e Hekurit			Hekur per Element			Pesha			
Emri	Sasia	Nr.	Ø	Gjati	Niesha	Gjatihoi	Ø	Gjati/ml	P. spec	Pesha	TOTALI
Kollona P-1 30x45	12	1	18	300	4	12.0	8	152.50	0.395	60.24	723
		2	16	400	6	24.0	10	0.00	0.62	0.00	0
		3	18	400	4	16.0	12	0.0	0.89	0.00	0
		4	16	400	6	24.0	14	0.0	1.21	0.00	0
		5	16	300	4	13.2	16	75.6	1.48	127.01	1324
		6	16	240	6	14.4	18	28.0	2	56.00	672
		7	8	150	61	91.5					
		8	8	100	61	61.0					



Elementi Struktural		Specifikimet e Hekurit			Hekur per Element			Pesha			
Emri	Sasia	Nr.	Ø	Gjati	Niesha	Gjatihoi	Ø	Gjati/ml	P. spec	Pesha	TOTALI
Kollona P-1 30x45	6	1	18	300	4	12.0	8	213.50	0.395	84.35	506
		2	16	400	6	24.0	10	0.00	0.62	0.00	0
		3	18	400	4	16.0	12	0.0	0.89	0.00	0
		4	16	400	6	24.0	14	0.0	1.21	0.00	0
		5	16	300	4	13.2	16	75.6	1.48	127.01	762
		6	16	240	6	14.4	18	28.0	2	56.00	336
		7	8	200	61	122.0					
		8	8	150	61	91.5					

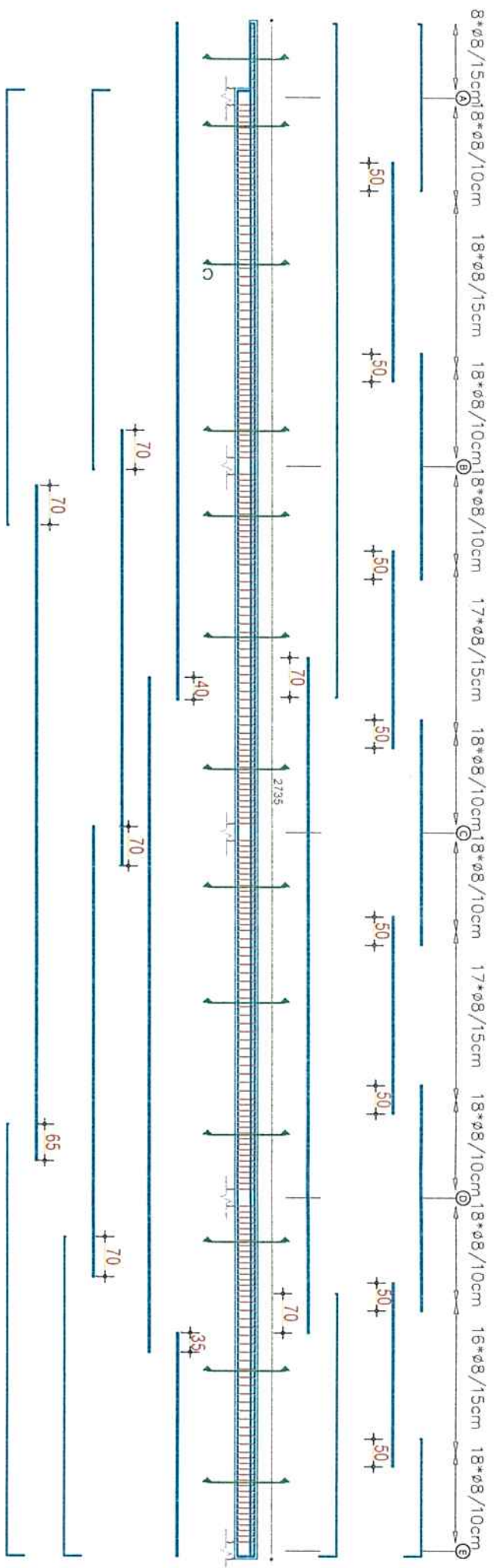


# Boshti Trarit A,B,C,D,E,F 30X40

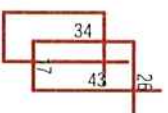
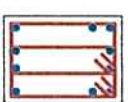
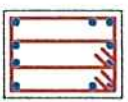
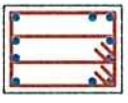
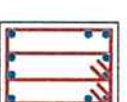
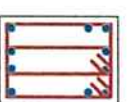
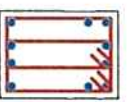
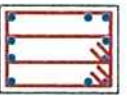
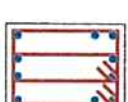
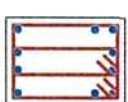
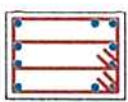


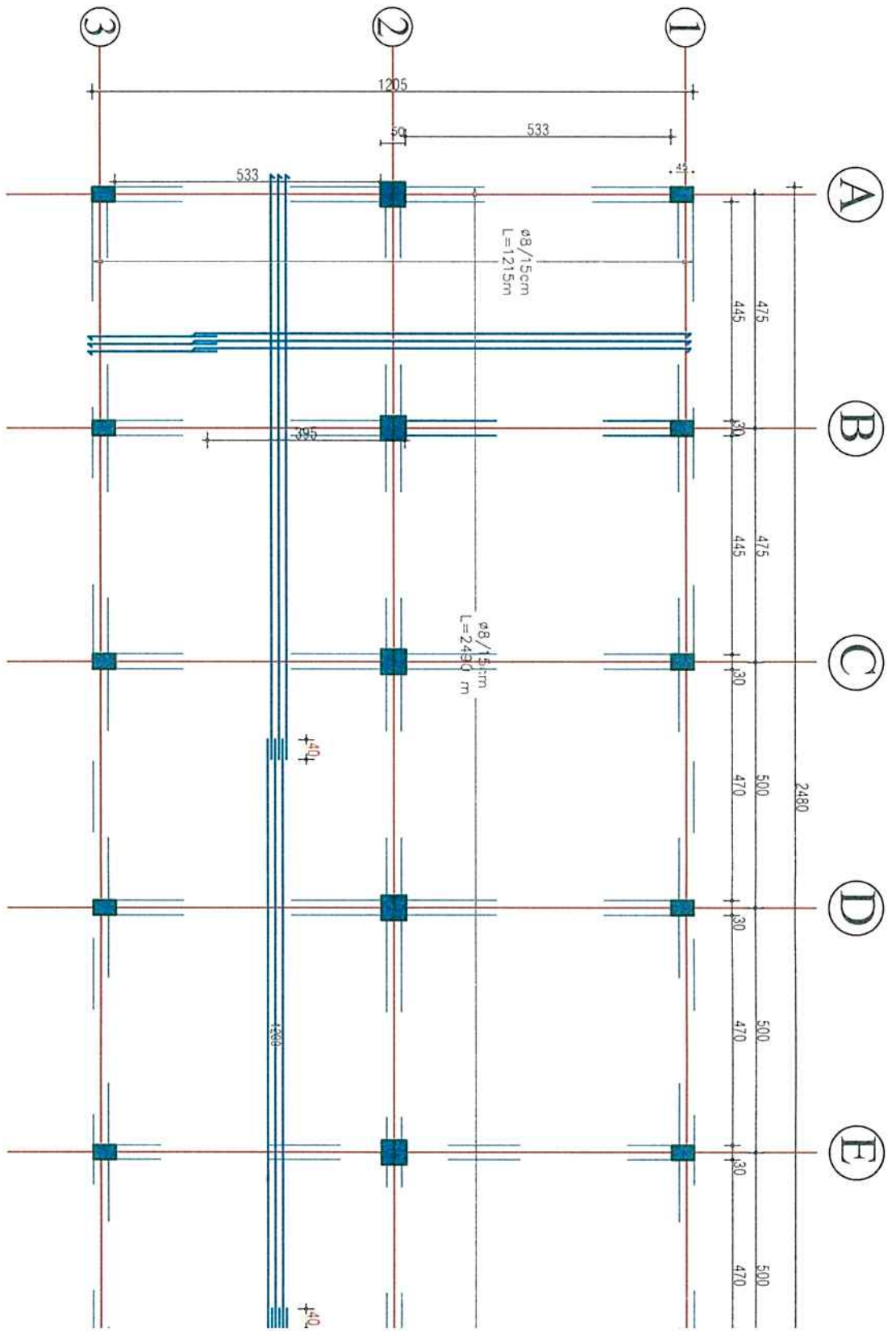
Elemento shup	Nome	Qu
Trave Asse A,B,C,D,E,F		

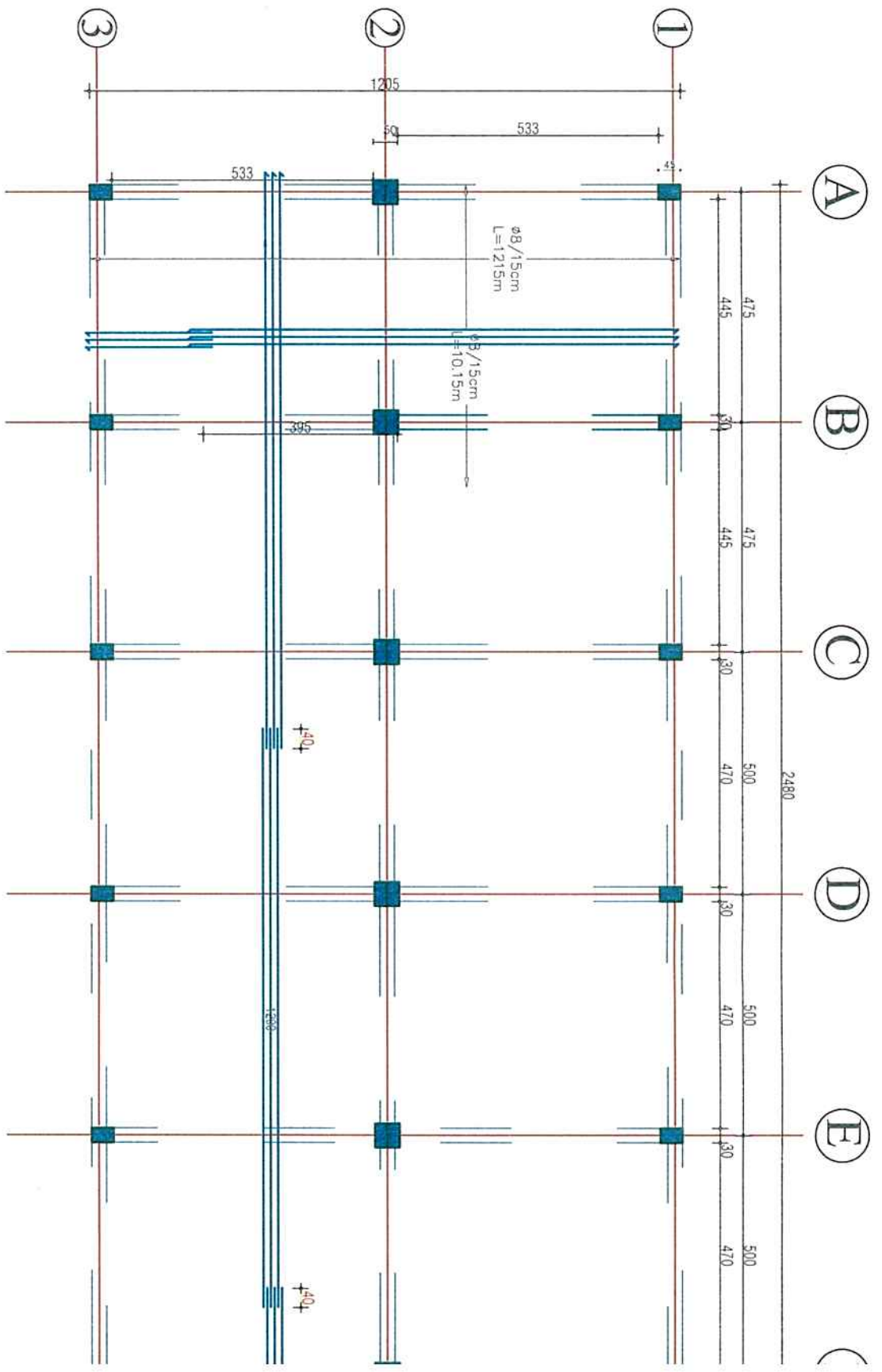


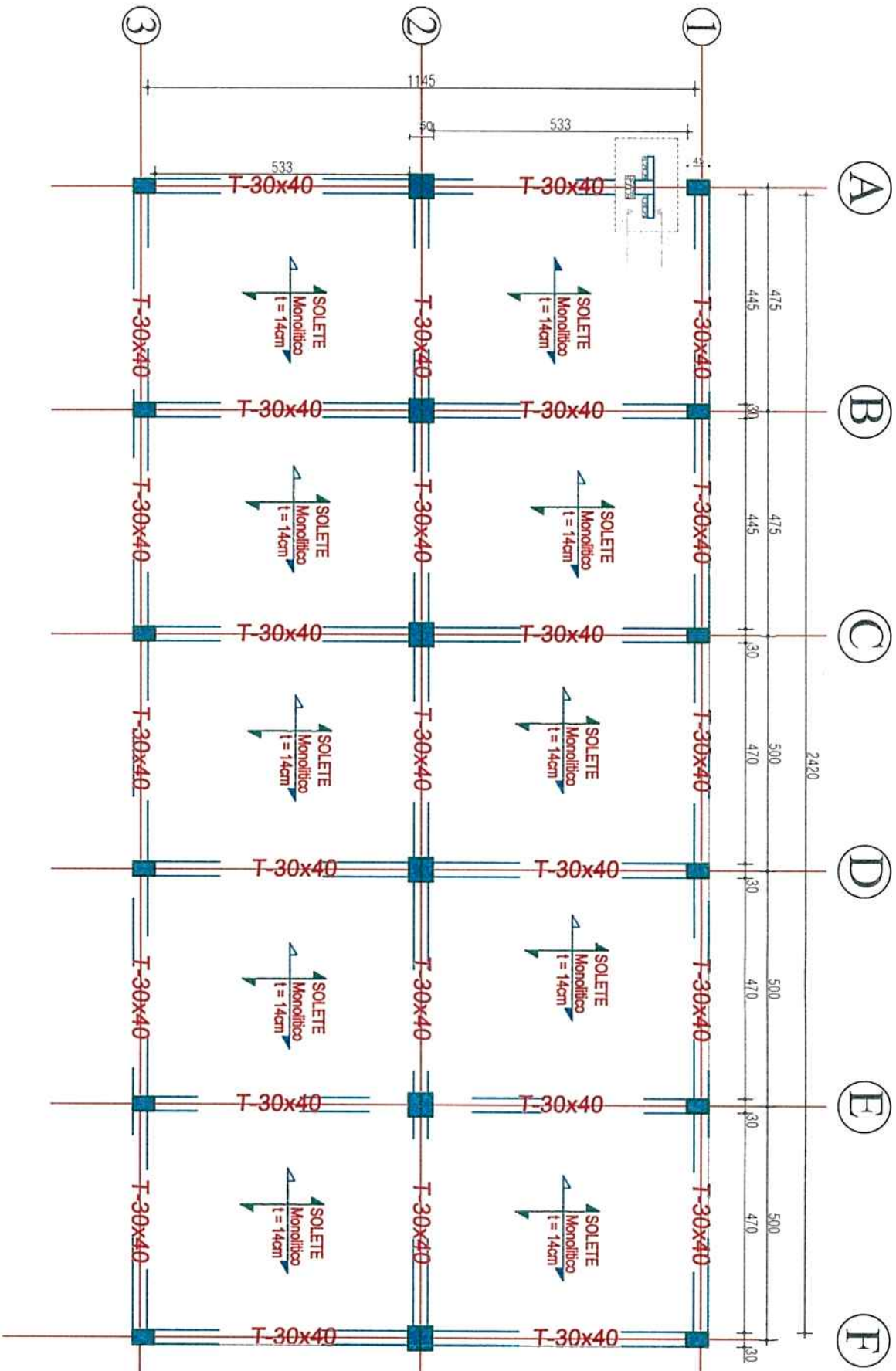


Elemento strutturale		Specie delle barre			Armadure per elemento			Peso				
Nome	Quantità	Nr.	Ø	Lung.	Unità	Lmt	Ø	Lmt	Faspec	Peso	TOTALE	
Trave Akseve 1,2,3	3	1	14	800	2	16,0	8	515,60	0,395	203,62	611	
		2	12	700	2	14,0	10	48,00	0,46	29,76	89	
		3	10	1200	2	24,0	12	109,9	0,89	97,81	293	
		4	12	775	2	15,5	14	124,8	1,21	151,01	453	
		5	14	1200	2	24,0	14	0,0	1,68	0,00	0	
		6	10	1200	2	24,0	10	0,0	0,0	0,00	0	
		7	12	800	2	16,0						
		8	14	800	2	16,0						
		9	12	600	2	12,0						
		10	10	400	2	8,0						
		11	14	1200	2	24,0						
		12	14	300	2	6,0						
		13	12	390	2	7,8						
		14	14	400	2	8,0						
		15	12	300	2	7,0						
		16	12	1200	2	24,0						
		17	14	400	2	8,0						
		18	12	350	2	7,0						
		19	14	400	2	8,0						
		20	12	300	2	6,6						
		21	14	500	2	10,0						
		22	14	240	2	4,8						
		23	8	240	212	503,6						
		24	8	85	8	6,8						
<b>Somma</b>										<b>1447kg</b>		









(A)

(B)

(C)

(D)

(E)

(F)

(1)

(2)

(3)



T-30x40

T-30x40

T-30x40

T-30x40

T-30x40

T-30x40

T-30x40

T-30x40

T-30x40

T-30x40

T-30x40

T-30x40

T-30x40

T-30x40

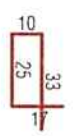
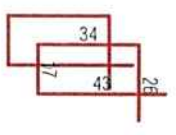
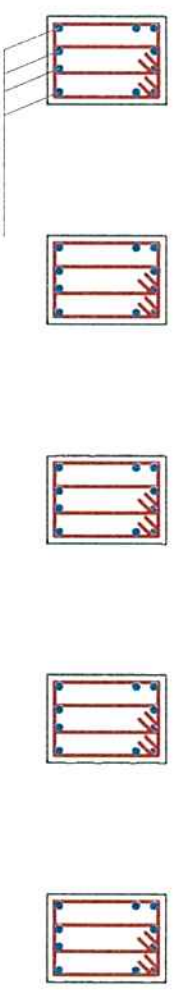
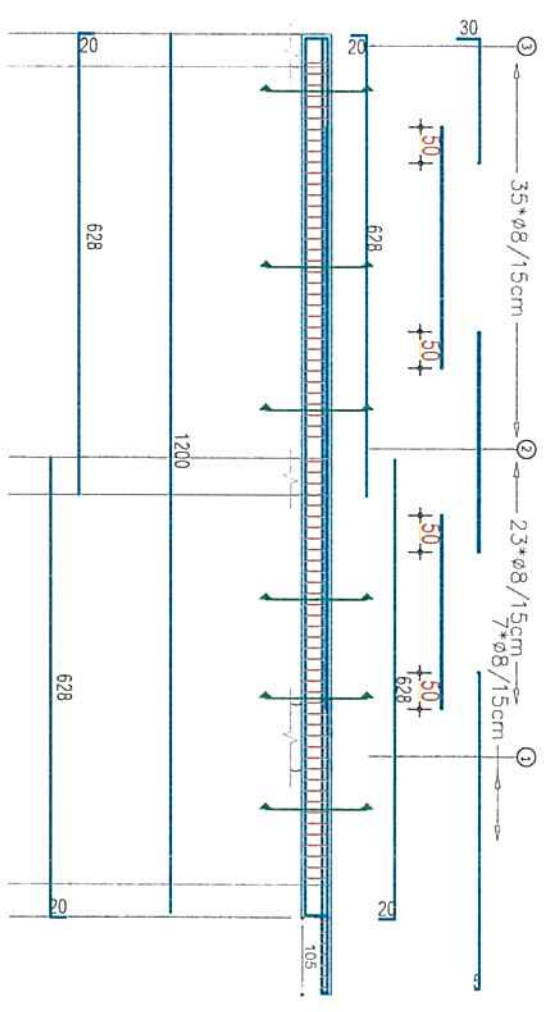
T-30x40

T-30x40

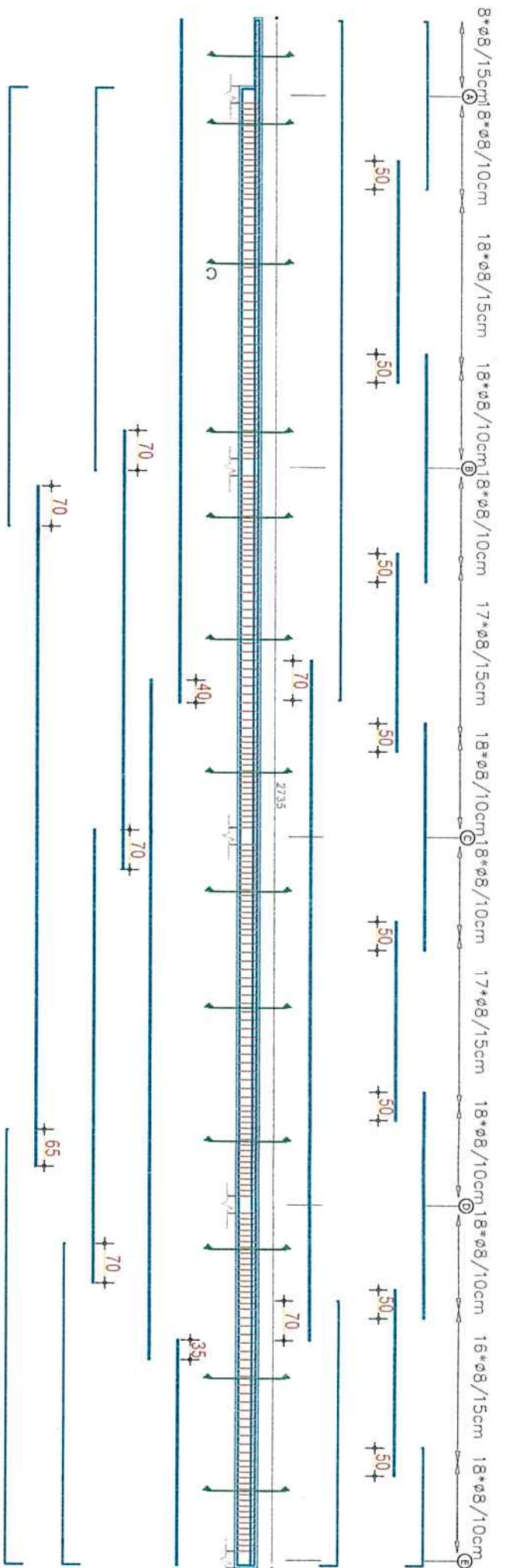
T-30x40

T-30x40

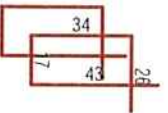
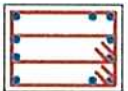
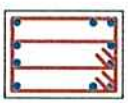
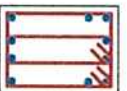
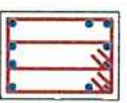
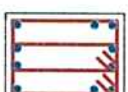
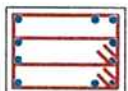
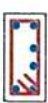
# Boshti Trarit A,B,C,D,E,F 30X40

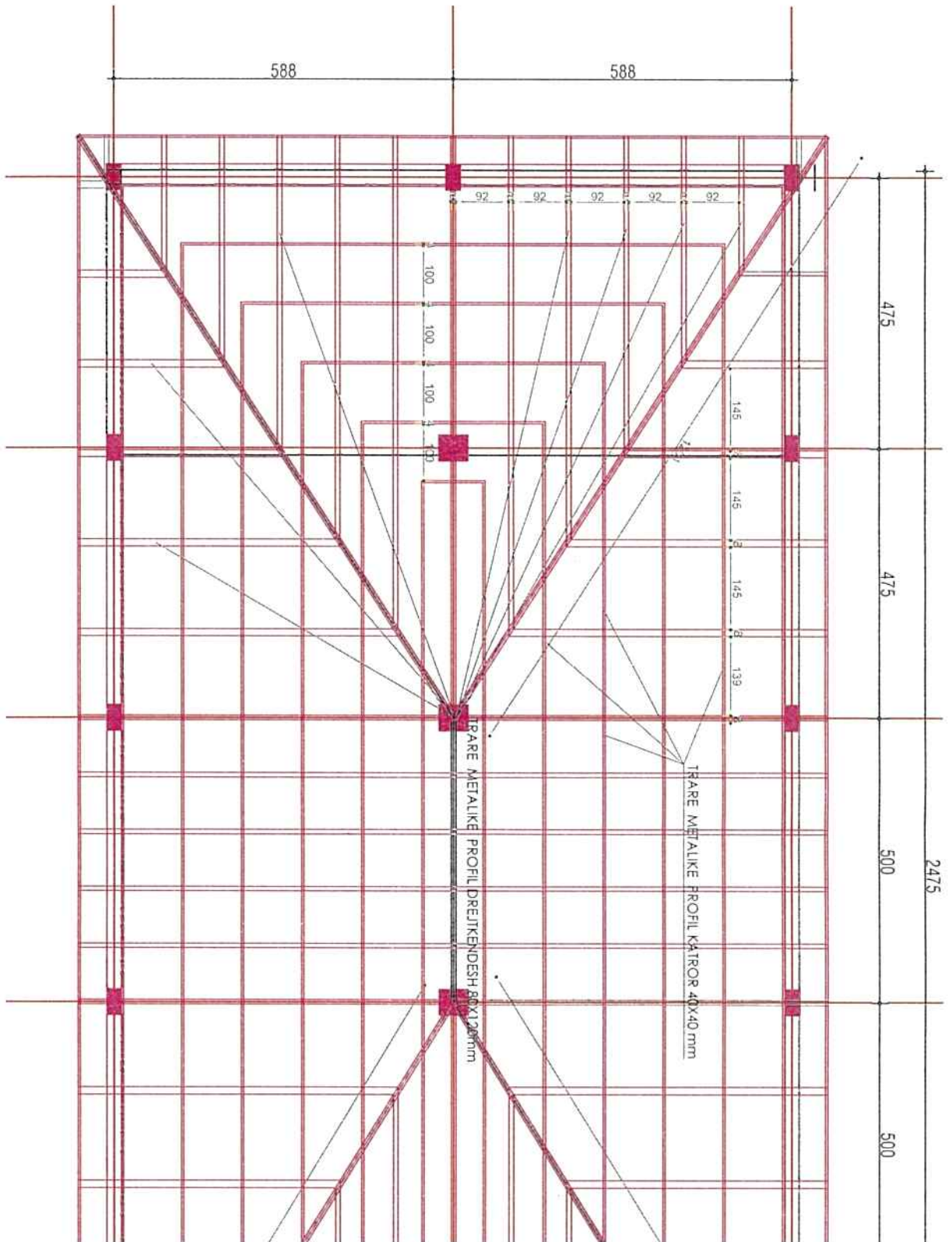


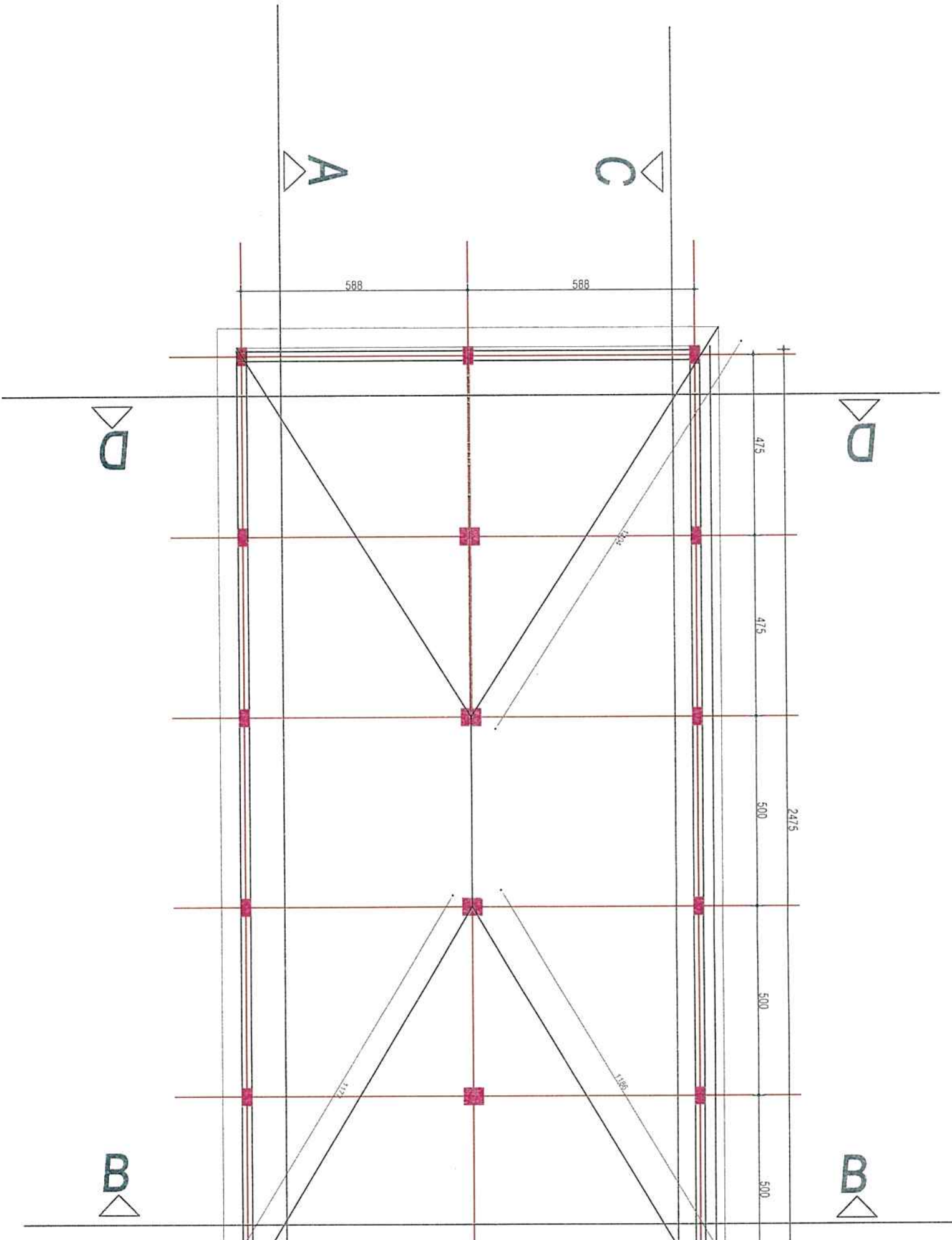
Elemento strutturali		Spa	
Nome	Quantità	Nr.	Ø
<b>Trave Asse A,B,C,D,E,F</b>			
	4	1	14
		2	12
		3	10
		4	14
		5	14
		6	12
		7	14
		8	12
		9	14
		10	8
		11	8



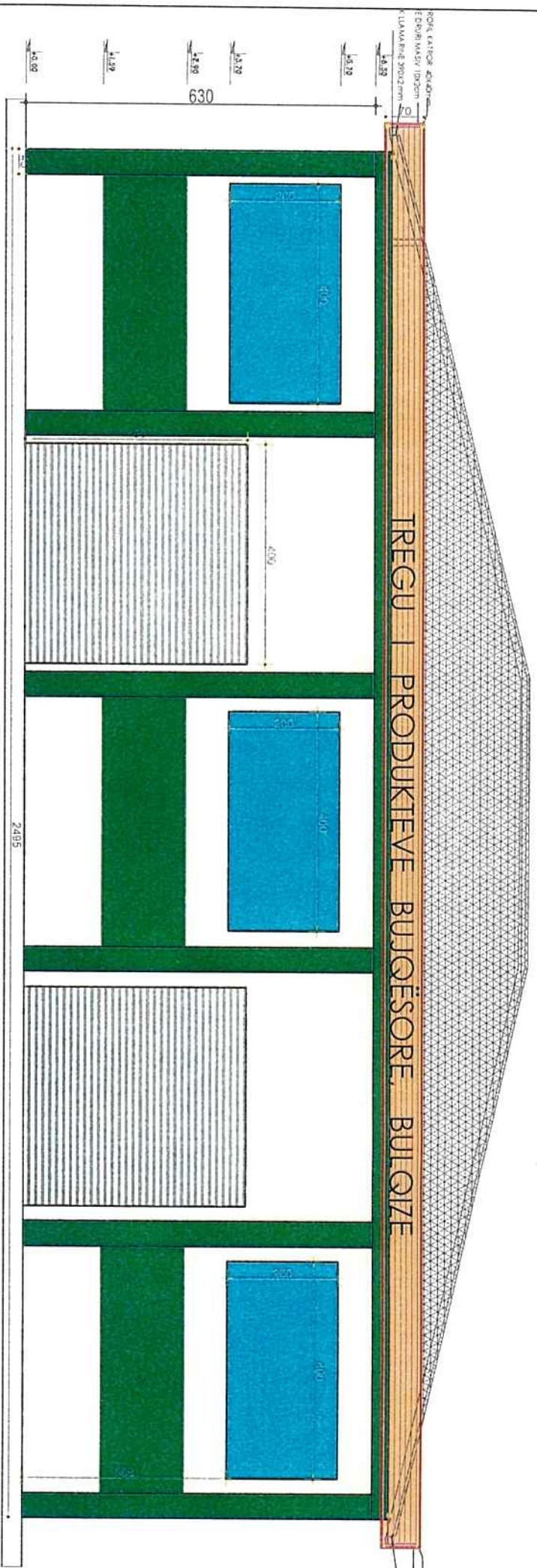
Elemento strutturale		Specifiche barre			Armature per elemento			Peso				
Nome	Quantità	Nr.	Ø	Lung.	Unità	Lbt	Ø	Lmt	Pspec	Peso	TOTALE	
Trave Akseve 1,2,3	3	1	14	800	2	16,0	8	515,60	0,395	203,66	611	
		2	12	700	2	14,0	10	48,00	0,62	29,76	89	
		3	10	1200	2	24,0	12	109,19	0,87	97,81	293	
		4	12	775	2	15,5	14	124,8	1,21	151,01	453	
		5	14	1200	2	24,0	14	0,0	1,48	0,00	0	
		6	10	1200	2	24,0	16	0,0	2,1	0,00	0	
		7	12	800	2	16,0						
		8	14	800	2	16,0						
		9	12	600	2	12,0						
		10	10	400	2	8,0						
		11	14	1200	2	24,0						
		12	14	300	2	6,0						
		13	12	390	2	7,8						
		14	14	400	2	8,0						
		15	12	350	2	7,0						
		16	12	1200	2	24,0						
		17	14	400	2	8,0						
		18	12	350	2	7,0						
		19	14	400	2	8,0						
		20	12	300	2	6,6						
		21	14	500	2	10,0						
		22	14	240	2	4,9						
		23	8	240	212	509,8						
		24	8	88	8	7,8						
<b>Somma</b>										<b>1447,90</b>		



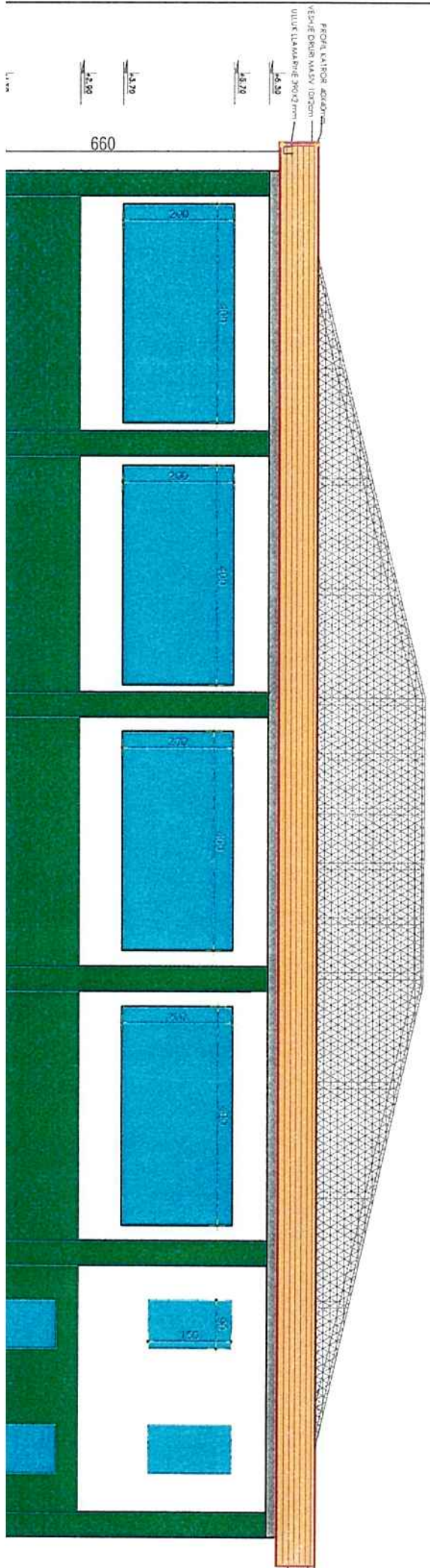


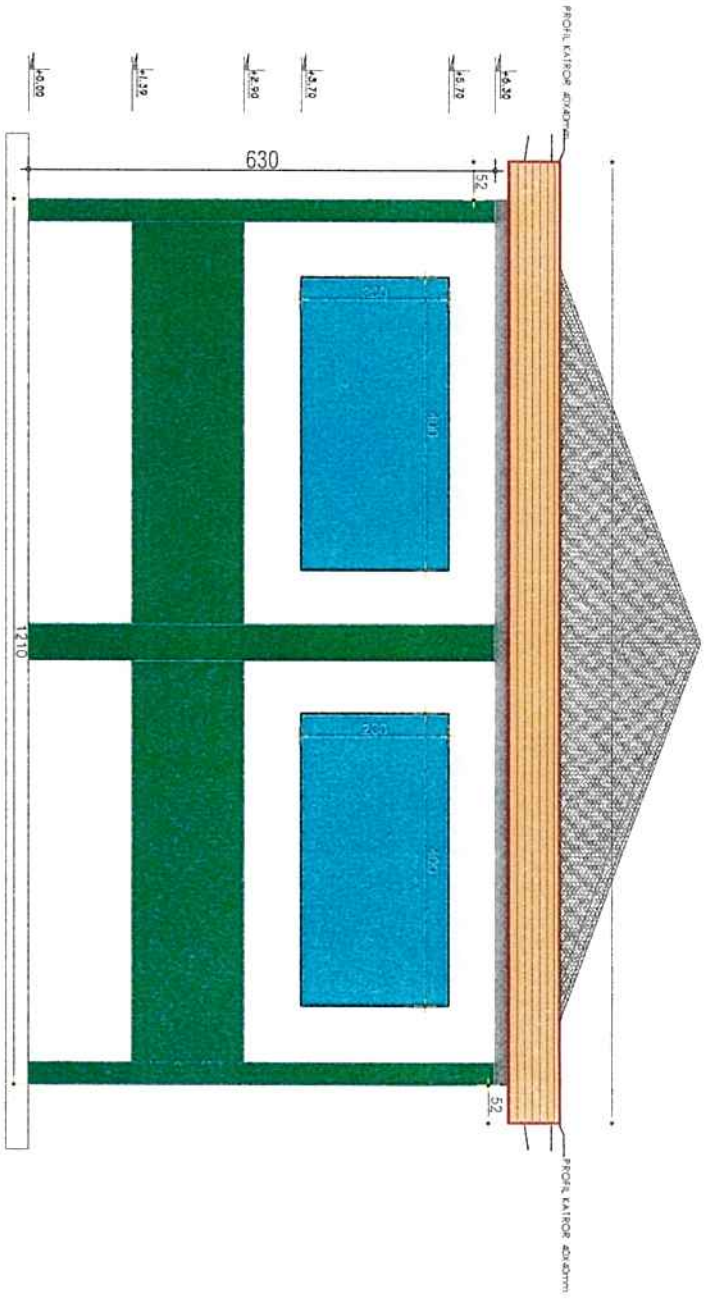




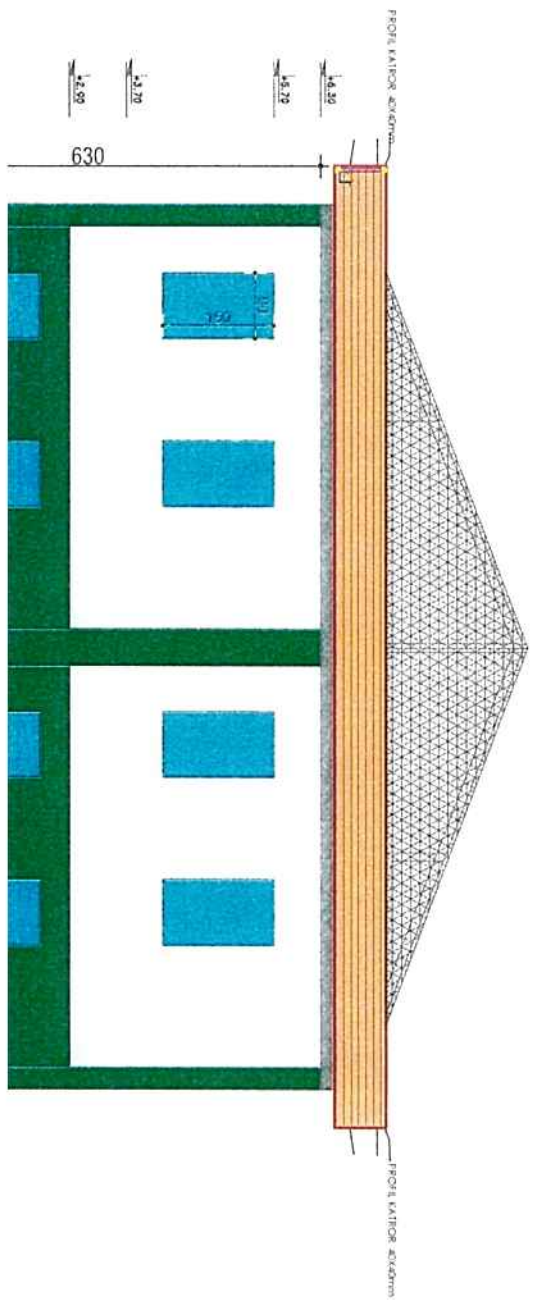


**PAMJA C-C**





**PAMJA ANESORE D-D**



A

B

C

D

E

2480

475 445 30 475 445 30 500 470 30 500 470 30 500

1

2

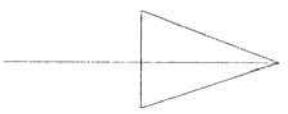
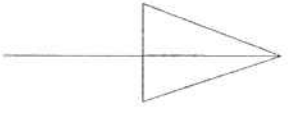
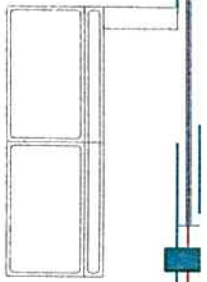
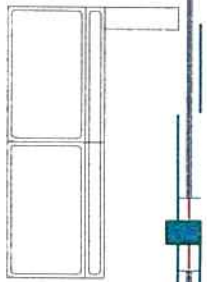
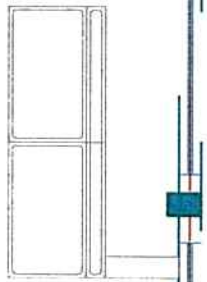
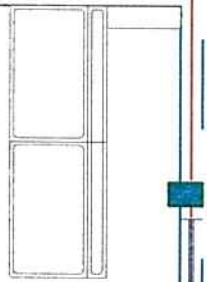
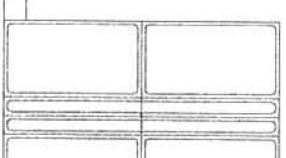
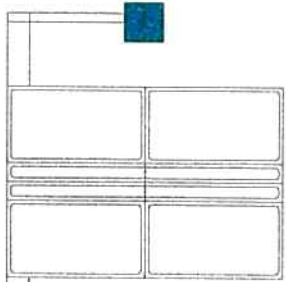
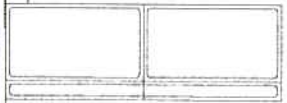
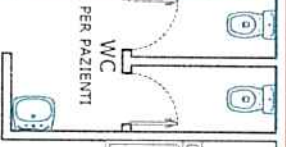
3

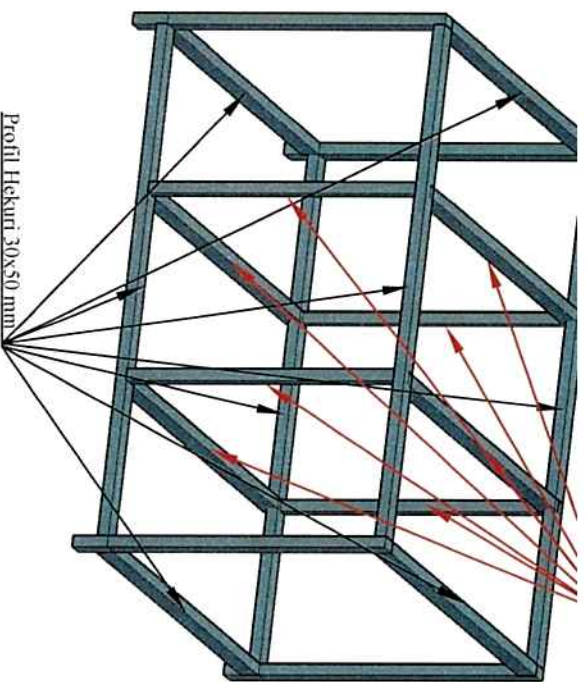
1205

50

533

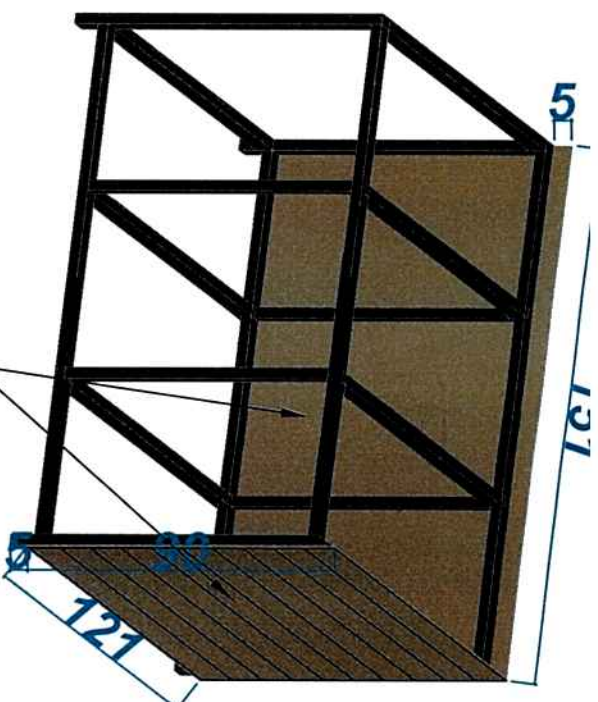
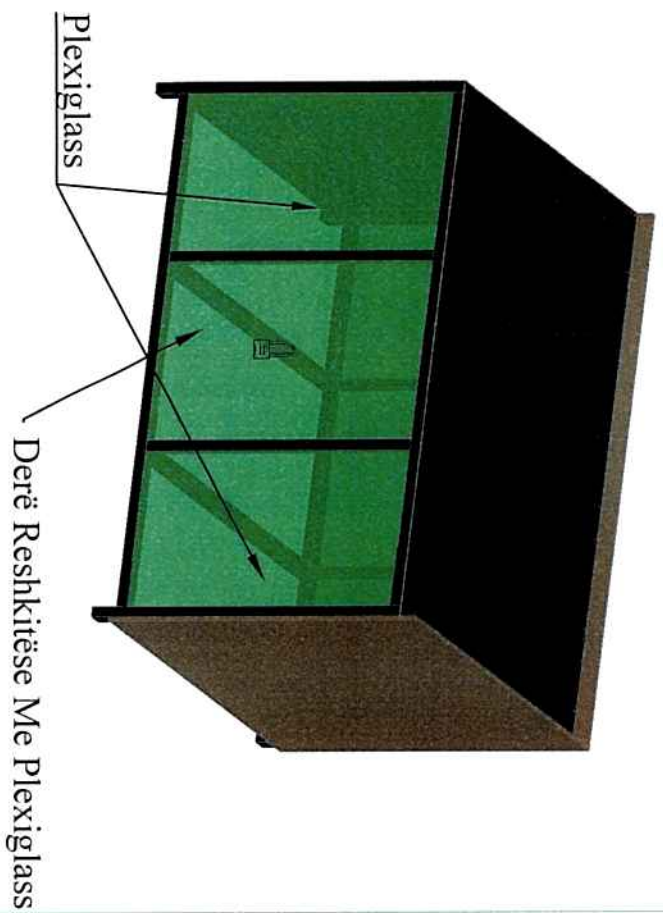
533





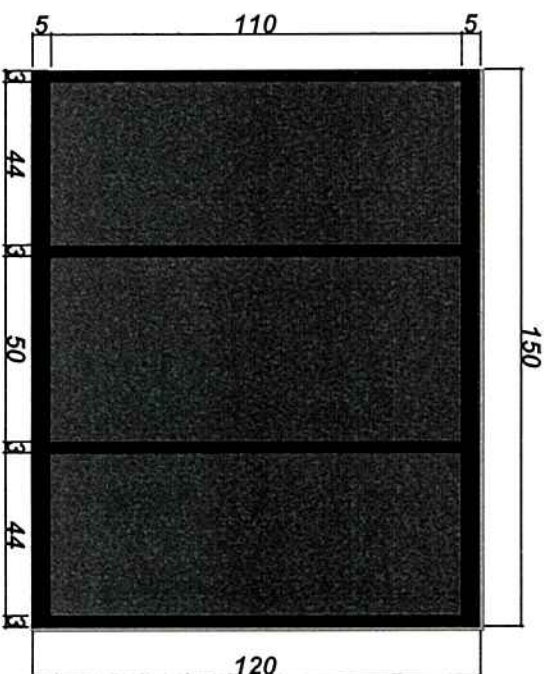
Profil Hekurt 30x50 mm

## Veshja Me PlexiGlass Per Kanatet



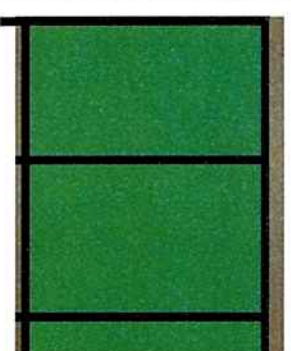
Veshje Me Ristela Derrase t=10mm, h=100mm

## Pamje Nga Siper E Tavolinës



Tabak L

## Pamje Balllore E Tavolir







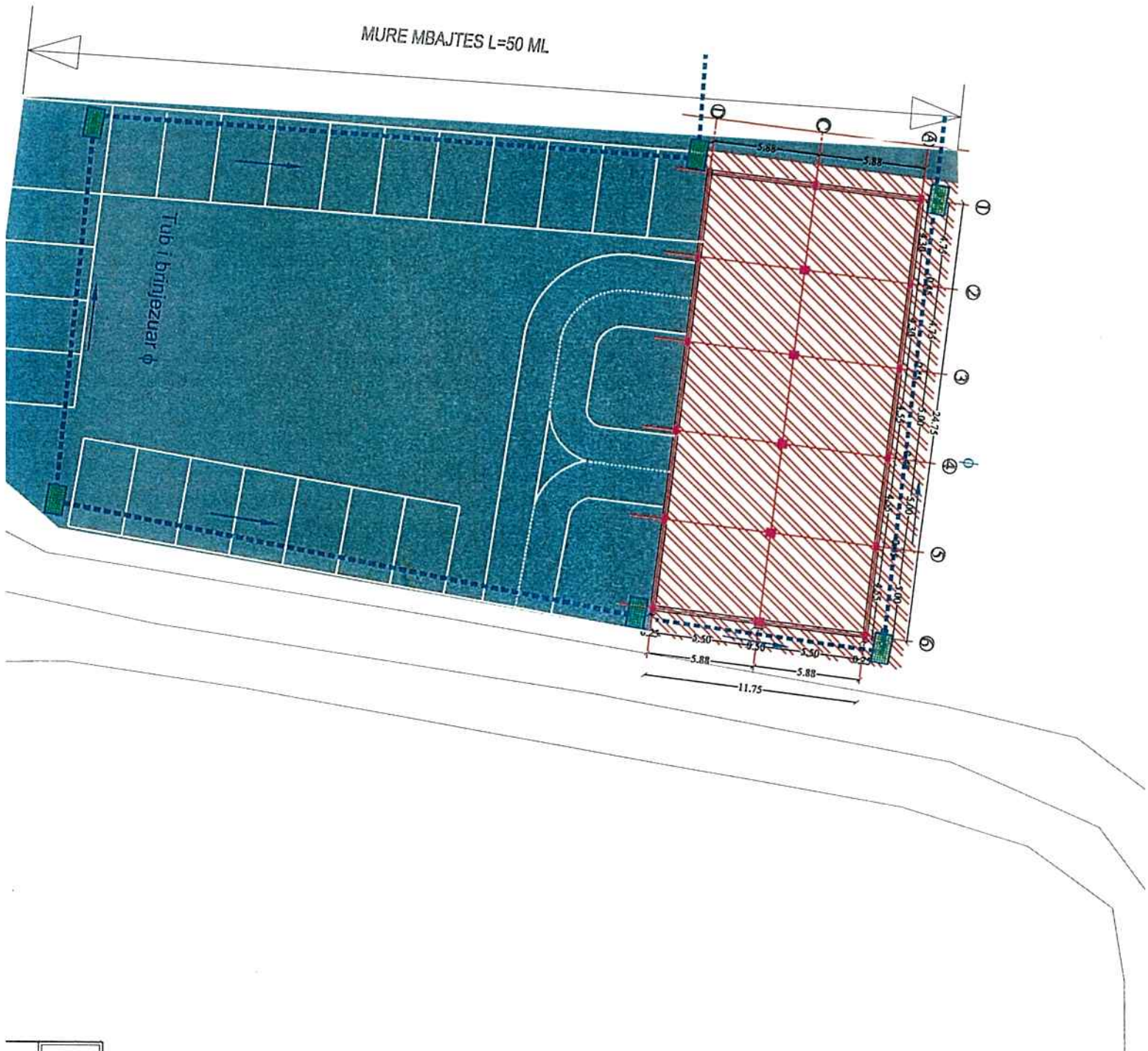
## Pamje Anësore E Tavolir










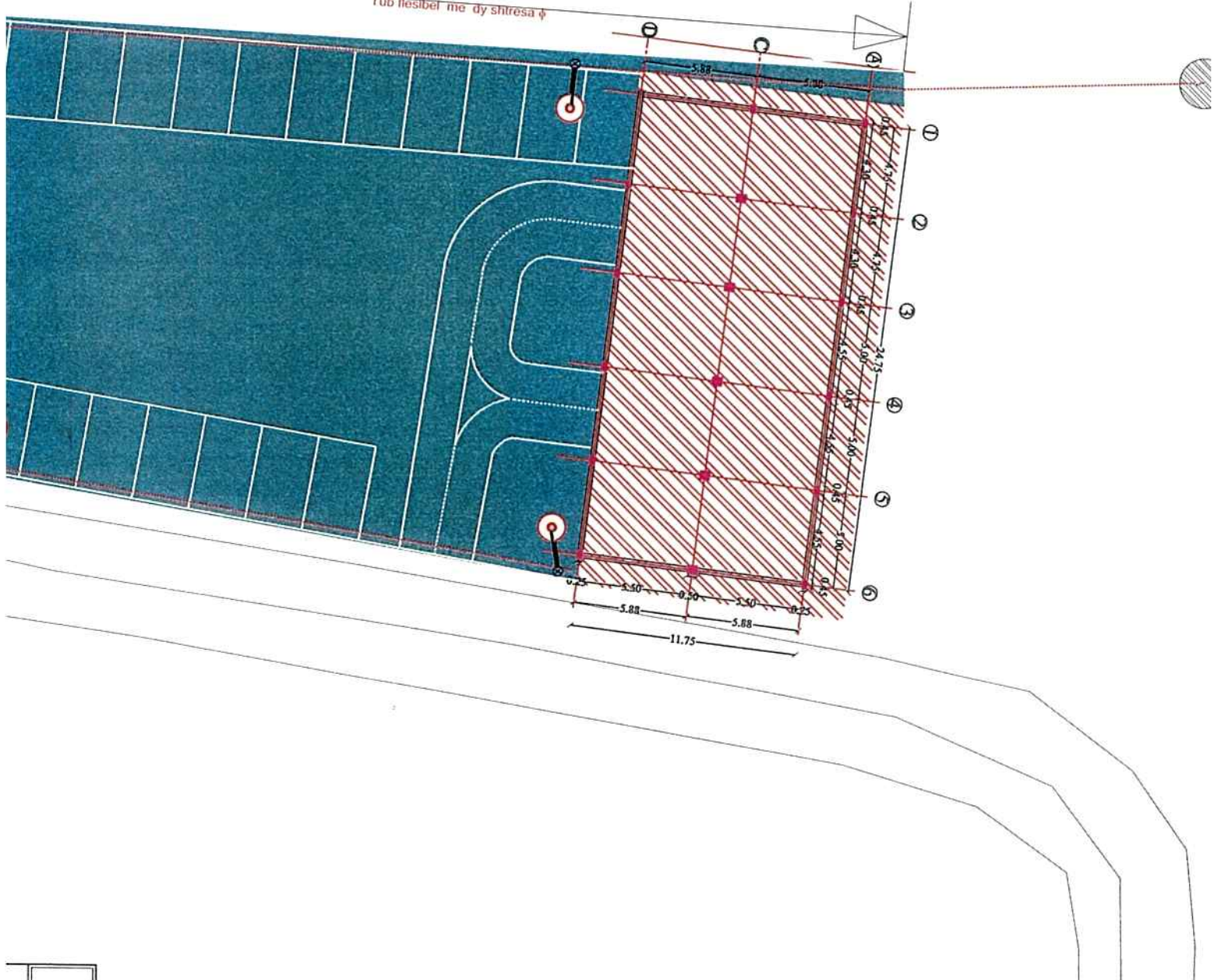
-  Pusele K.U.B (U.4xU.6m)
-  Pusele Kontrolli 1x1x1.5m
-  Tub i brinjzuar  $\phi=250\text{mm}$ ,K.U.B
-  Tub i brinjzuar  $\phi=400\text{mm}$ ,K.U.B



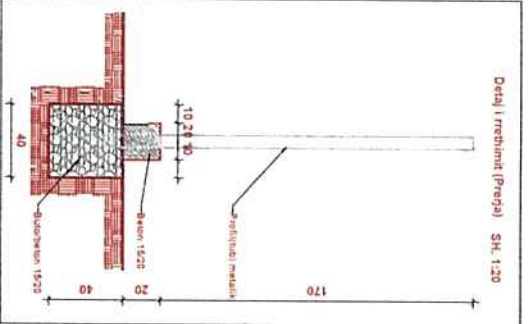
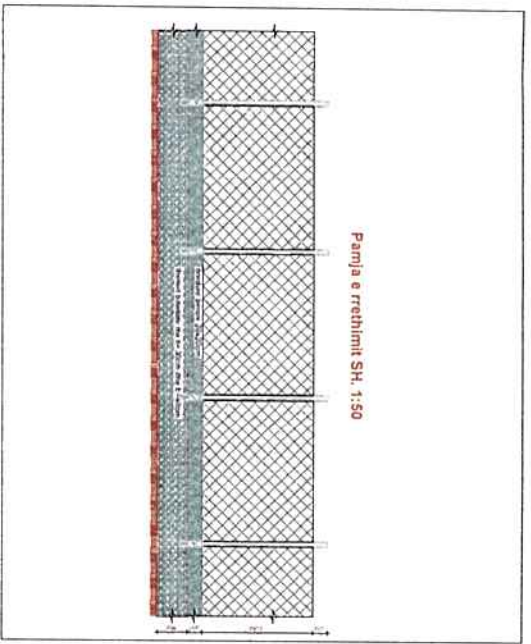
-  Pusete elektrike (1.0x1.0x1.0m)
-  Pusete Ndricimi (0.4x0.4x0.4)
-  Tub fresibel me 2 shtresa  
Φ=75mm per ndricim

MURE MBAJTES L=50 ML

Tub fresibel me dy shtresa φ







## PAMJA E PORTES

