

*MBROJTE NGA PERROI I JEZULLIT NE FSHATIN JEZULL  
, BASHKIA MIRDITE, QARKU LEZHE*

# PROJEKT - ZBATIMI

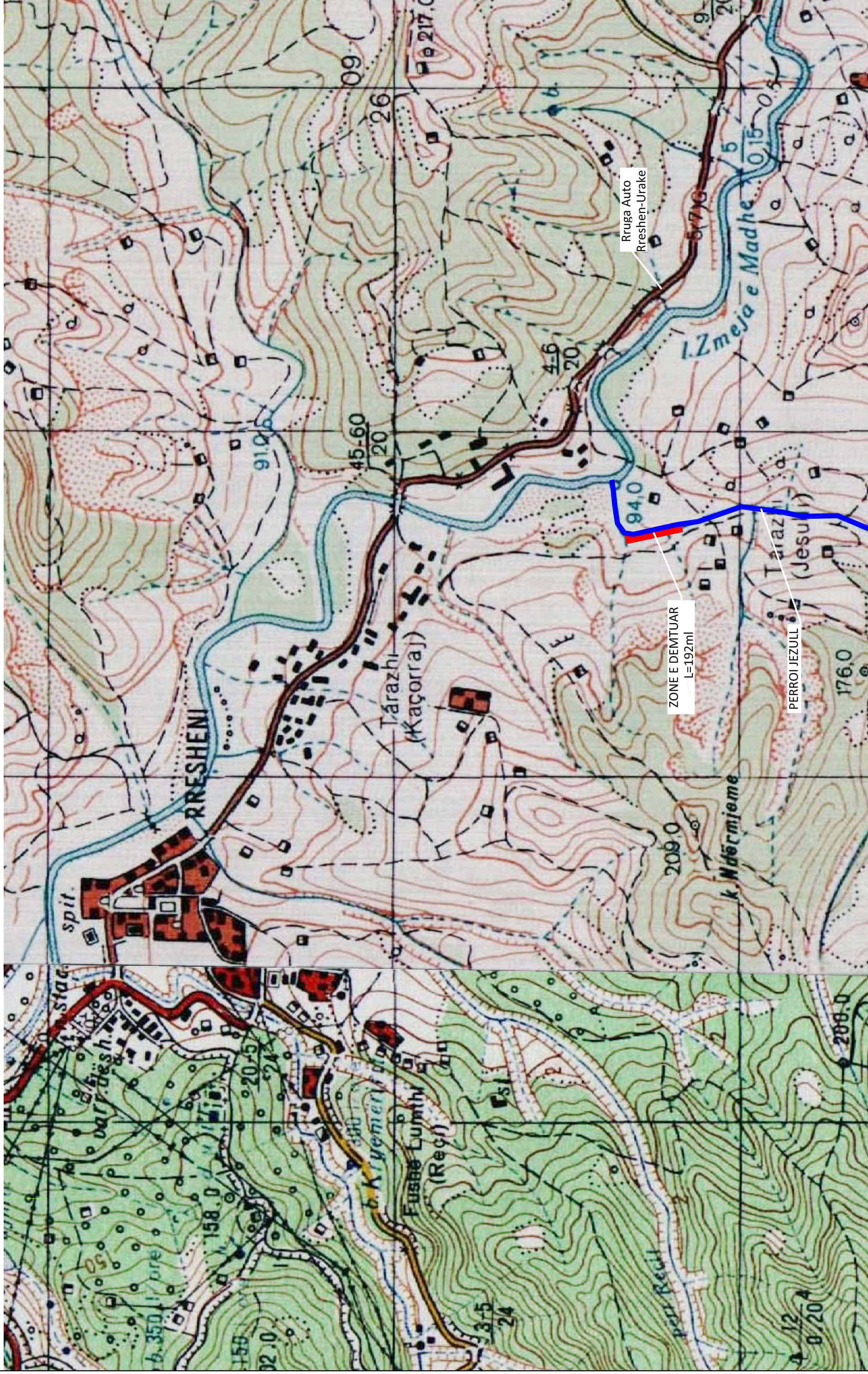
**PROJEKTUES:**

"ANGERBA" SH.P.K

TETOR 2016



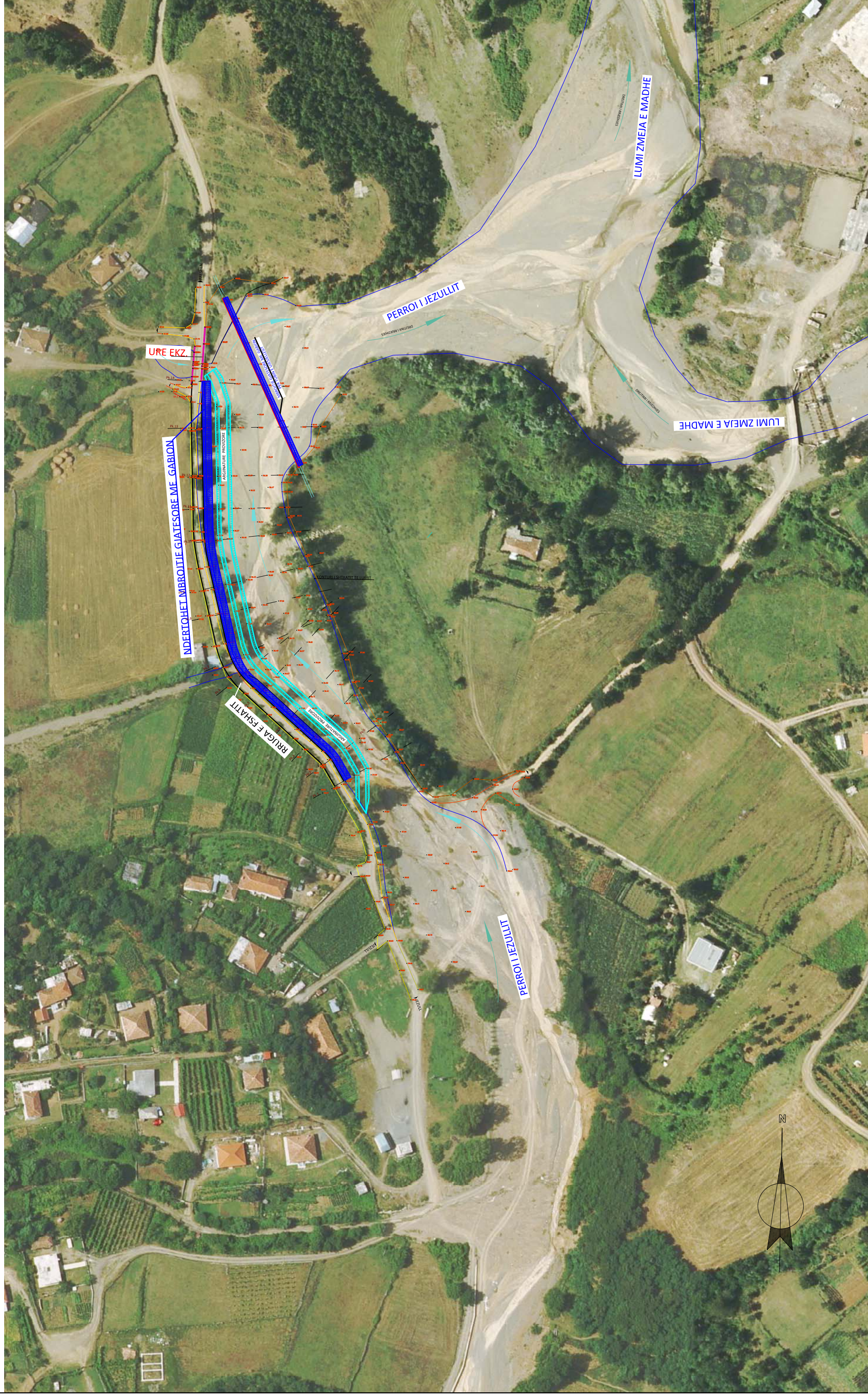
HARTA E ZONES



BASHKIA MIRDITE	VENDOSHIA	BASHKIA MIRDITE	FAZA E PROJEKTIMIT		Grupi i Projektimit Ing. Burhan HAFZI	Shkalla 1:10 000
			PROJEKT ZBATIMI			
"ANGERBA" sh.p.k.	TITULLI I PROJEKTT	MBROJTE NGA PERROI I JEZULLIT NE FSHATIN JEZULL	TITULLI I VEZATIMIT		Top. Tonin PICAKU	Data: Tetor 2016
			HARTA E ZONES		Ing. Ajiola MAZARI	FLETA Nr.1
BASHKIA MIRDITE					Ing. Servet VERCANI	



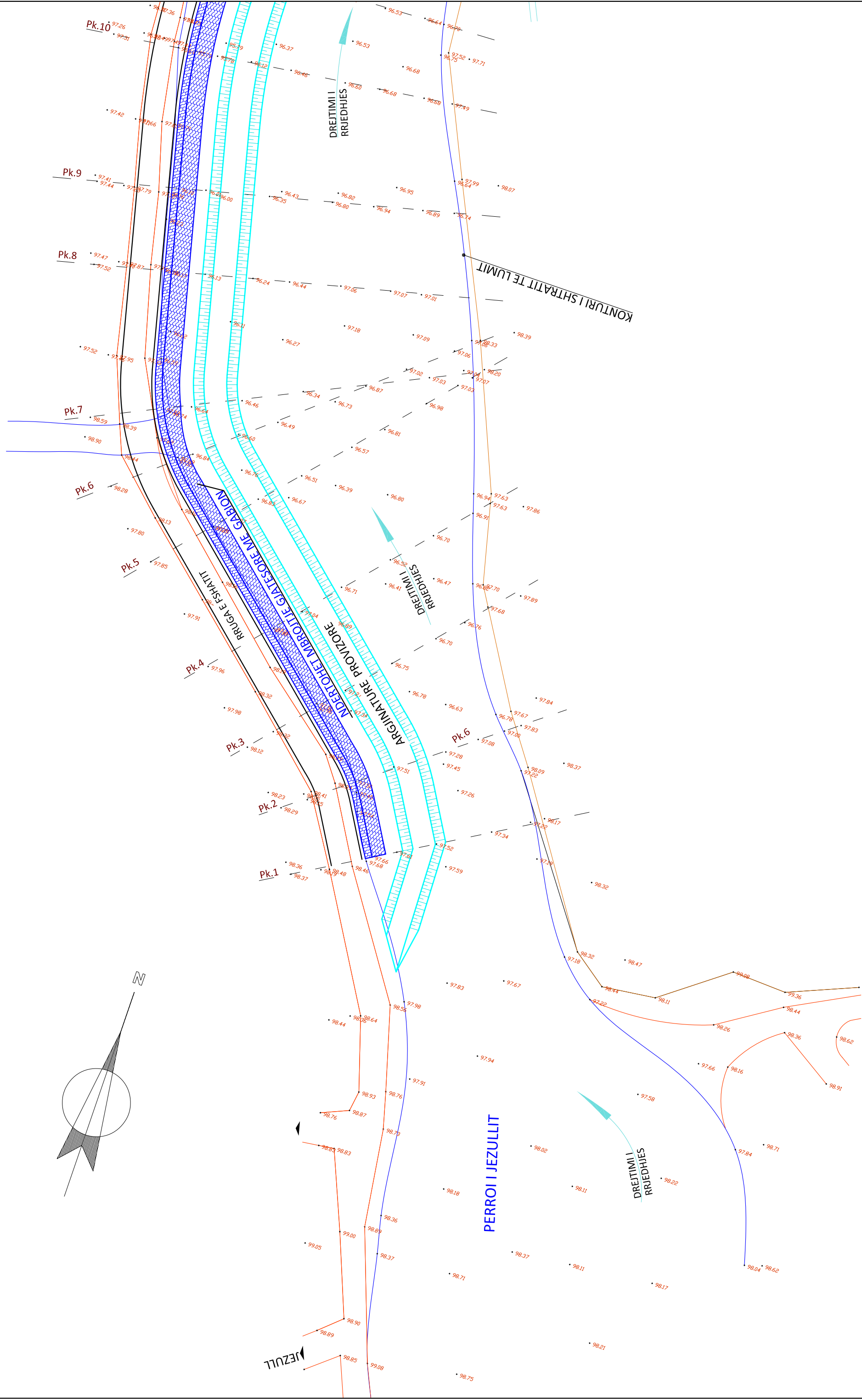
PLANIMETRIA E PERGJITHSHME



BASHKIA MIRDITE	VENDODHJA	BASHKIA MIRDITE	FAZA E PROJEKTIMIT	PROJEKT ZBATIMI	Grupi i Projektimit	Shkalla 1:1 500
	TITULLI PROJEKTI	MBROJTE NGA PERROI I JEZULLIT NE FSHATIN JEZULL	TITULLI VIZATIMIT	PLANIMETRIA E PERGJITHSHME	Ing. Burhan HAFIZI Top. Tonin PICAKU Ing. Arjola MAZARI Ing. Servet VERCANI	Data: Tetor 2016 FLETA Nr:2
// ANGERBA " sh.p.k.						



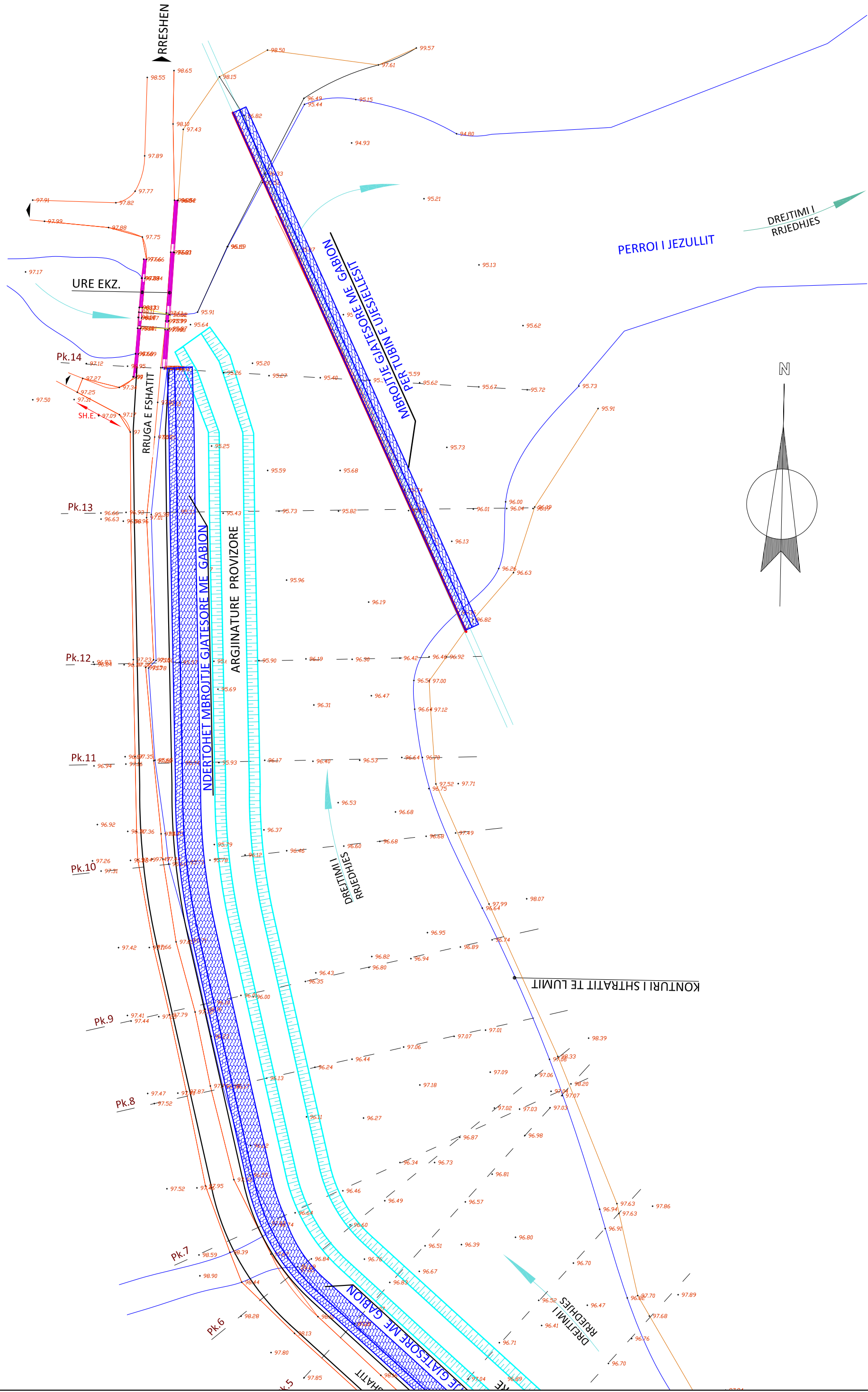
PLANIMETRIA E PERGJITHSHME



VENDODHJA BASHKIA MIRDITE TITULLI PROJEKTI MBROJTE NGA PERROI I JEZULLIT NE FSHATIN JEZULL	FAZA E PROJEKTIMIT PROJEKT ZBATIMI TITULLI VIZATIMIT PLANIMETRIA E PERGJITHSHME	Grupi i Projektitimit	
		Ing. Burhan HAFIZI	Ing. Arjola MAZARI
// ANGERBA " sh.p.k.	BASHKIA MIRDITE	Shkalla 1:500	
		Top. Tonin PICAKU	Data: Tetor 2016
		FLETA Nr.3	



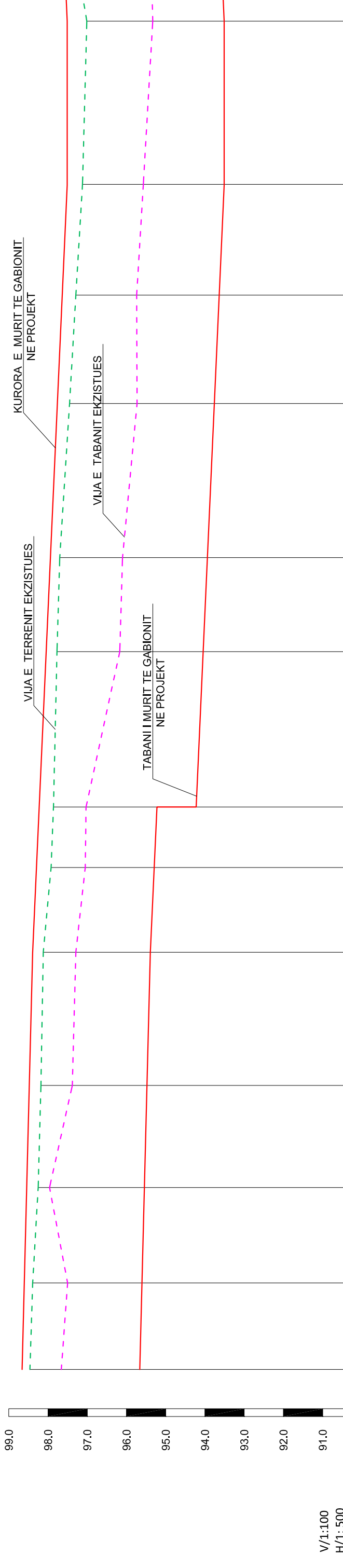
PLANIMETRIA E PERGJITHSHME



VENDODHJA	BASHKIA MIRDITE	FAZA E PROJEKTIMIT	PROJEKT ZBATIMI	Grupi i Projektimit	Shkalla 1:500
	TITULLI PROJEKTI		TITULLI VIZATIMIT		Data: Tetor 2016
" ANGERBA " sh.p.k.		MBROJTE NGA PERROI I JEZULLIT NE FSHATIN JEZULL		Ing. Burhan HAFIZI	FLETA Nr.4
BASHKIA MIRDITE		PLANIMETRIA E PERGJITHSHME		Top. Tonin PICAKU	
				Ing. Arjola MAZARI	
				Ing. Servet VERCANI	



# PROFILI GJATESOR , PK.1-13



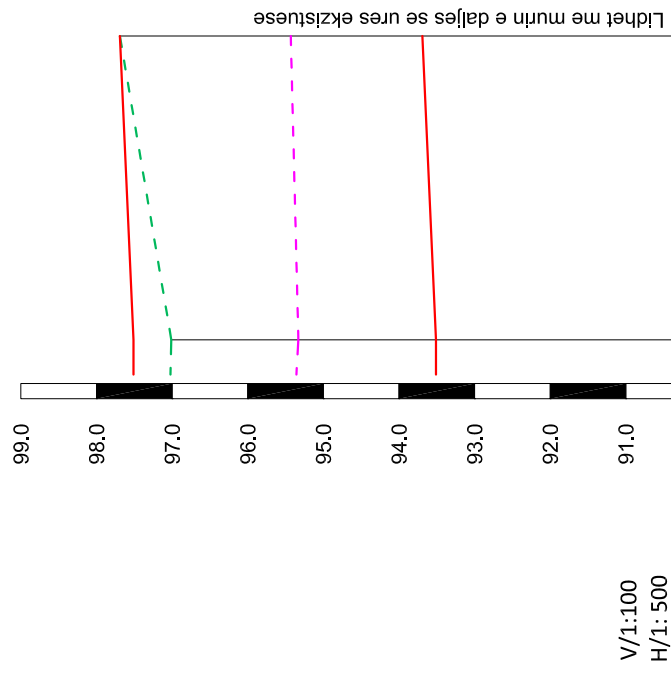
PJERRESIA		i = 0.00506 L = 53.0 m		i = 0.00903 L = 97.6 m		i = 0.00000 L = 20.9 m	
GERMIM ose MBUSHJE		0.20	-1.90	-2.00	-2.42	-2.16	-2.06
KUOTA E PROJEKTIT (AKSII RRUGES)		98.66	98.60	98.29	98.54	97.94	97.51
KUOTA E PROJEKTIT (TABANI GABIONIT)		95.66	95.60	94.22	94.22	93.94	93.51
KUOTA E TERRENIT (AKSII RRUGES)		98.46	98.39	98.12	98.25	97.70	97.12
KUOTA E TERRENIT (TABANI GABIONIT)		97.66	97.50	97.29	97.96	96.10	95.57
Nr. PIKETES		1	2	3	4	5	6
DISTANCA PUESORE		11.0	12.2	13.0	10.8	7.7	19.8
DISTANCA PROGRESIVE		0.0	11.0	23.2	36.2	53.2	71.7
KILOMETRAZHI		0.00	0.11	0.24	0.37	0.43	0.50
SHENIME							

<b>BASHKIA MIRDITE</b>	<b>"ANGERBA" sh.p.k.</b>	VENDODHJA		FAZA E PROJEKTIMIT		Grupi i Projektit	
		BASHKIA MIRDITE	PROJECT ZBATIMI	Ing.Burhan HAFIZI	SHKALLA 1:100,1:500		
		TITULLI I PROJEKTIT		TITULLI I VIZATIMIT		Data: Tetor 2016	
		MBROJTE NGA PERROI I JEZULLIT NE FSHATIN JEZULL		PROFILI GJATESOR		FLETA Nr:5	



PROFILI GJATESOR , PK.13-14

VOLUMET E PUNES



V/1:100  
H/1: 500

PJERRESIA	0.50	-1.82	-1.74
GERMIM ose MBUSHJE	97.01	97.01	97.69
KUOTA E PROJEKTIT (AKSI I RRUGES)	97.51	97.51	97.69
KUOTA E PROJEKTIT (TABANI GABIONIT)	93.51	93.51	93.69
KUOTA E TERRENIT (AKSI I RRUGES)	97.01	97.01	97.69
KUOTA E TERRENIT (TABANI GABIONIT)	95.33	95.33	95.43
Nr. PIKETES	13	14	14
DISTANCA PJESORE		20.1	
DISTANCA PROGRESIVE	171.9		192.0
KILOMETRAZHI			0.21
SHENIME			

Nr.Pik.	Volume Germimi			Vol.Germ.	Vol.Progr.
	Dist.Pjes.	Sip. Germ. Mes.	Sip. G. Mes.		
1	0	9.12			
2	11	8.79	8.96	98.51	98.51
3	12.2	10.67	9.73	118.71	217.21
4	13	8.68	9.68	125.78	342.99
5	17	8.80	8.74	148.58	491.57
6	10.8	8.59	8.70	93.91	585.47
7	7.7	17.01	12.80	98.56	684.03
8	19.8	12.65	14.83	293.63	977.67
9	12	13.10	12.88	154.50	1132.17
10	19.6	10.54	11.82	231.67	1363.84
11	13.8	10.13	10.34	142.62	1506.46
12	14.1	9.75	11.43	161.09	1667.55
13	20.8	8.06	9.10	189.18	1856.73
14	20.1	12.89	11.32	227.53	2084.26
	191.9			2084.26	

Nr.Pik.	Gabiona (1x1x1)m			Cope	Cope Progr.
	Dist.Pjes.	Cope	Cope Mes.		
1	0	3.00			
2	11	3.00	3.00	33.00	33.00
3	12.2	3.00	3.00	36.60	69.60
4	13	3.00	3.00	39.00	108.60
5	17	3.00	3.00	51.00	159.60
6	10.8	3.00	3.00	32.40	192.00
7	7.7	4.00	3.50	26.95	218.95
8	19.8	4.00	4.00	79.20	298.15
9	12	4.00	4.00	48.00	346.15
10	19.6	4.00	4.00	78.40	424.55
11	13.8	4.00	4.00	55.20	479.75
12	14.1	4.00	4.00	56.40	536.15
13	20.8	4.00	4.00	83.20	619.35
14	20.1	4.00	4.00	80.40	699.75
	191.9			699.75	

Nr.Pik.	Mbushja mbas gabionave			Vol. Mbu.	Vol.Progr.
	Dist.Pjes.	Sip. Mbu. Mes.	Sip. M. Mes.		
1	0	5.75			
2	11	5.57	5.66	62.26	62.26
3	12.2	6.43	6.00	73.20	135.46
4	13	5.31	5.87	76.31	211.77
5	17	5.28	5.30	90.02	301.79
6	10.8	4.95	5.12	55.24	357.03
7	7.7	10.40	7.68	59.10	416.12
8	19.8	9.21	9.81	194.14	610.26
9	12	9.27	9.24	110.88	721.14
10	19.6	7.90	8.59	168.27	889.41
11	13.8	9.49	8.70	119.99	1009.40
12	14.1	9.18	9.34	131.62	1141.02
13	20.8	8.59	8.93	185.74	1326.77
14	20.1	8.16	8.38	168.34	1495.11
	191.9			1495.11	

Nr.Pik.	Gabiona (1.5x1x1)m			Cope	Cope Progr.
	Dist.Pjes.	Cope	Cope Mes.		
1	0	1.00			
2	11	1.00	1.00	11.00	11.00
3	12.2	1.00	1.00	12.20	23.20
4	13	1.00	1.00	13.00	36.20
5	17	1.00	1.00	17.00	53.20
6	10.8	1.00	1.00	10.80	64.00
7	7.7	2.00	1.50	11.55	75.55
8	19.8	2.00	2.00	39.60	115.15
9	12	2.00	2.00	24.00	139.15
10	19.6	2.00	2.00	39.20	178.35
11	13.8	2.00	2.00	27.60	205.95
12	14.1	2.00	2.00	28.20	234.15
13	20.8	2.00	2.00	41.60	275.75
14	20.1	2.00	2.00	40.20	315.95
	191.9			315.95	

Nr.Pik.	Mbushja Argjinature			Vol. Mbu.	Vol.Progr.
	Dist.Pjes.	Sip. Mbu. Mes.	Sip. Mes.		
1	0	5.30			
2	11	4.20	4.75	52.25	52.25
3	12.2	8.44	6.32	77.10	129.35
4	13	8.92	8.68	112.84	242.19
5	17	8.81	8.87	150.71	392.90
6	10.8	9.10	8.96	96.71	489.61
7	7.7	9.67	9.39	72.26	561.88
8	19.8	10.23	9.95	197.01	758.89
9	12	10.09	10.16	121.92	880.81
10	19.6	7.63	8.86	173.66	1054.46
11	13.8	7.80	7.72	106.47	1160.93
12	14.1	8.76	8.28	116.75	1277.68
13	20.8	11.13	10.61	220.69	1498.37
14	20.1	15.68	13.41	269.44	1767.81
	191.9			1767.81	

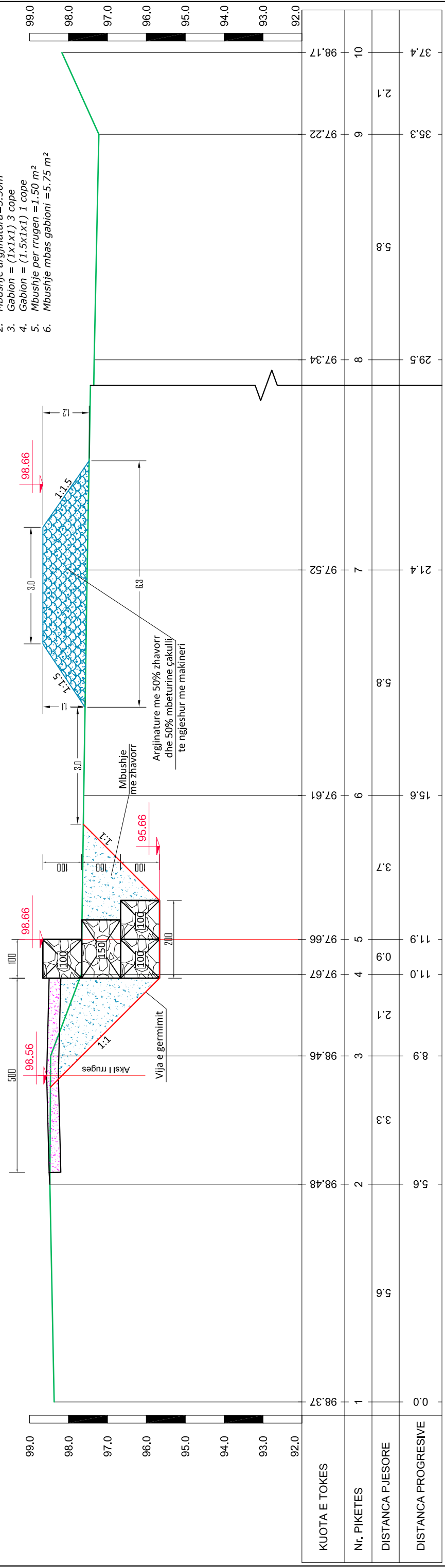
Nr.Pik.	Mbushja per rrugen			Vol. Mbu.	Vol.Progr.
	Dist.Pjes.	Sip. Mbu. Mes.	Sip. Mes.		
1	0	1.50			
2	11	1.50	1.50	16.50	16.50
3	12.2	1.50	1.50	18.30	34.80
4	13	1.50	1.50	19.50	54.30
5	17	1.50	1.50	25.50	79.80
6	10.8	1.50	1.50	16.20	96.00
7	7.7	1.50	1.50	11.55	107.55
8	19.8	1.50	1.50	29.70	137.25
9	12	1.50	1.50	18.00	155.25
10	19.6	1.50	1.50	29.40	184.65
11	13.8	1.50	1.50	20.70	205.35
12	14.1	1.50	1.50	21.15	226.50
13	20.8	1.50	1.50	31.20	257.70
14	20.1	1.50	1.50	30.15	287.85
	191.9			287.85	

VENDODHJA BASHKIA MIRDITE	FAZA E PROJEKTIMIT PROJEKT ZBATIMI	Grupi i Projektimit	
		Ing.Burhan HAFIZI	SHKALLA 1:100,1:500
TITULLI I PROJEKTTIT MBROJTE NGA PERROI I JEZULLIT NE FSHATIN JEZULL	TITULLI I VIZATIMIT PROFILI GJATESOR	Top.Tonin PICAKU	Data: Tetor 2016
"ANGERBA" sh.p.k.		Ing.Arjola MAZARI	FLETA Nr:6
		Ing.Servet VERCANI	



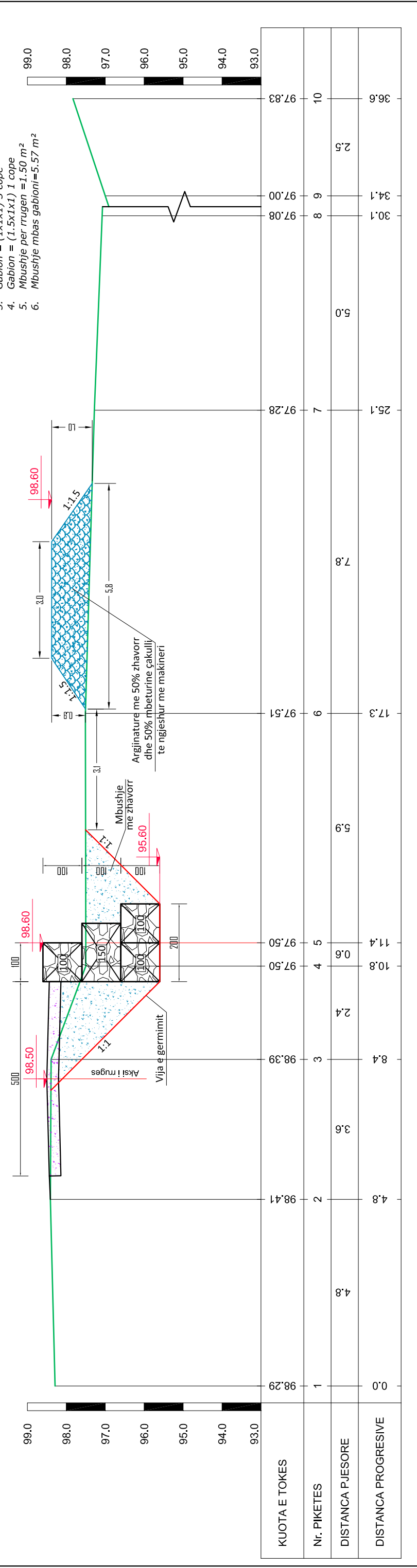
### PROFILI TERTHOR PK.1, SH 1:100

- VOLUMET**
- Germim = 9.12 m<sup>2</sup>
  - Mbushje argjinatura = 5.30 m<sup>2</sup>
  - Gablon = (1x1x1) 3 cope
  - Gablon = (1.5x1x1) 1 cope
  - Mbushje per rrugen = 1.50 m<sup>2</sup>
  - Mbushje mbas gabloni = 5.75 m<sup>2</sup>



### PROFILI TERTHOR PK.2, SH 1:100

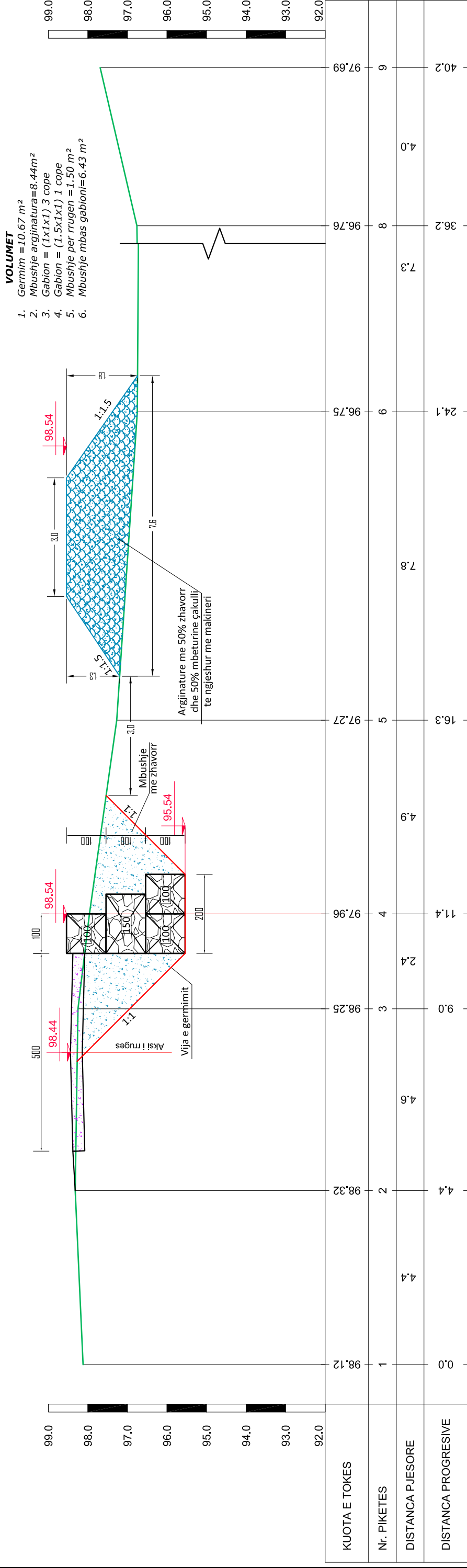
- VOLUMET**
- Germim = 8.79 m<sup>2</sup>
  - Mbushje argjinatura = 4.20 m<sup>2</sup>
  - Gablon = (1x1x1) 3 cope
  - Gablon = (1.5x1x1) 1 cope
  - Mbushje per rrugen = 1.50 m<sup>2</sup>
  - Mbushje mbas gabloni = 5.57 m<sup>2</sup>



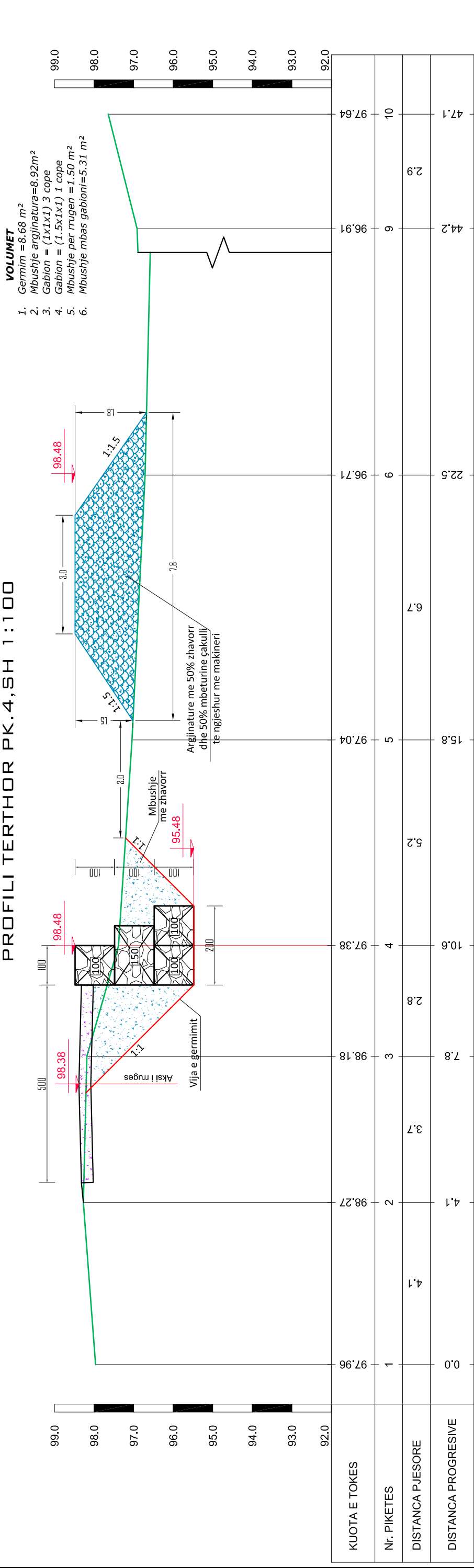
<b>BASHKIA MIRDITE</b>	VENDODHJA	BASHKIA MIRDITE	FAZA E PROJEKTIMIT	PROJEKT ZBATIMI	Grupi i Projektimit	Shkalla 1:100
	TITULLI PROJEKTI	MBROJTE NGA PERROI I JEZULLIT NE FSHATIN JEZULL	TITULLI VIZATIMIT	PROFILA TERTHOR	Ing. Burhan HAFIZI Top. Tonin PICAKU Ing. Arjola MAZARI Ing. Servet VERCANI	Data: Tetor 2016 FLETA Nr.7



### PROFILI TERTHOR PK.3, SH 1:100



### PROFILI TERTHOR PK.4, SH 1:100



BASHKIA MIRDITE

"ANGERBA" sh.p.k.

VENDODHJA  
BASHKIA MIRDITE

TITULLI PROJEKTI  
MBROJTE NGA PERROI I JEZULLIT  
NE FSHATIN JEZULL

FAZA E PROJEKTIMIT  
PROJEKT ZBATIMI

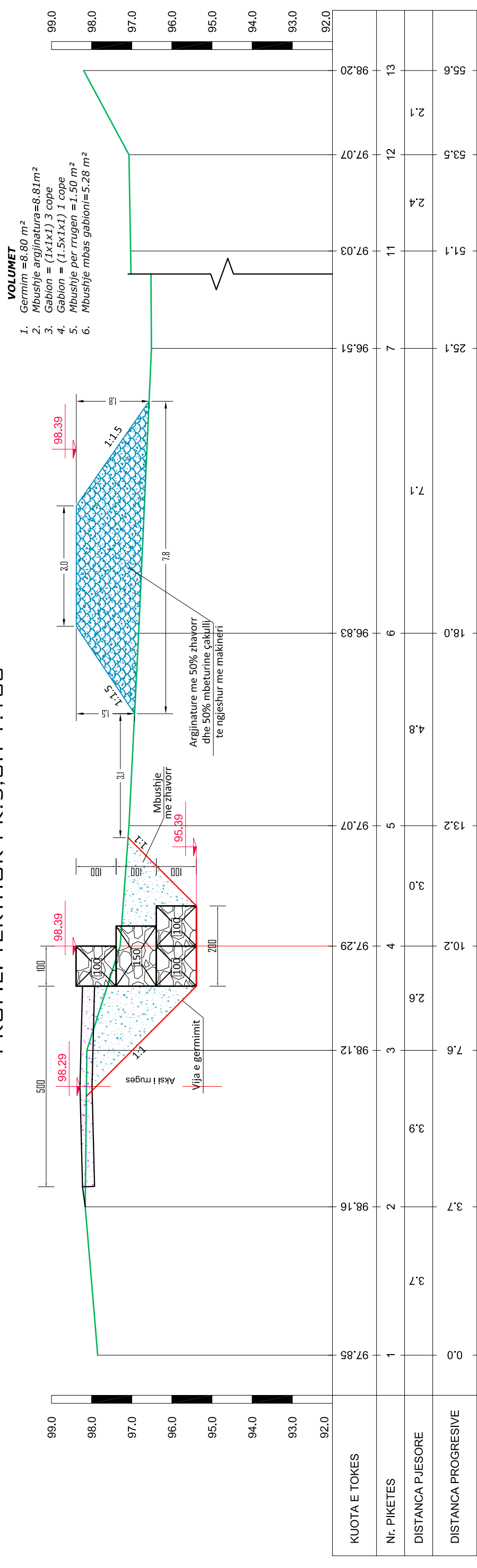
TITULLI VIZATIMIT  
PROFILA TERTHOR

Grupi i Projektimit  
Ing. Burhan HAFIZI  
Top. Tonin PICAKU  
Ing. Arjola MAZARI  
Ing. Servet VERCANI

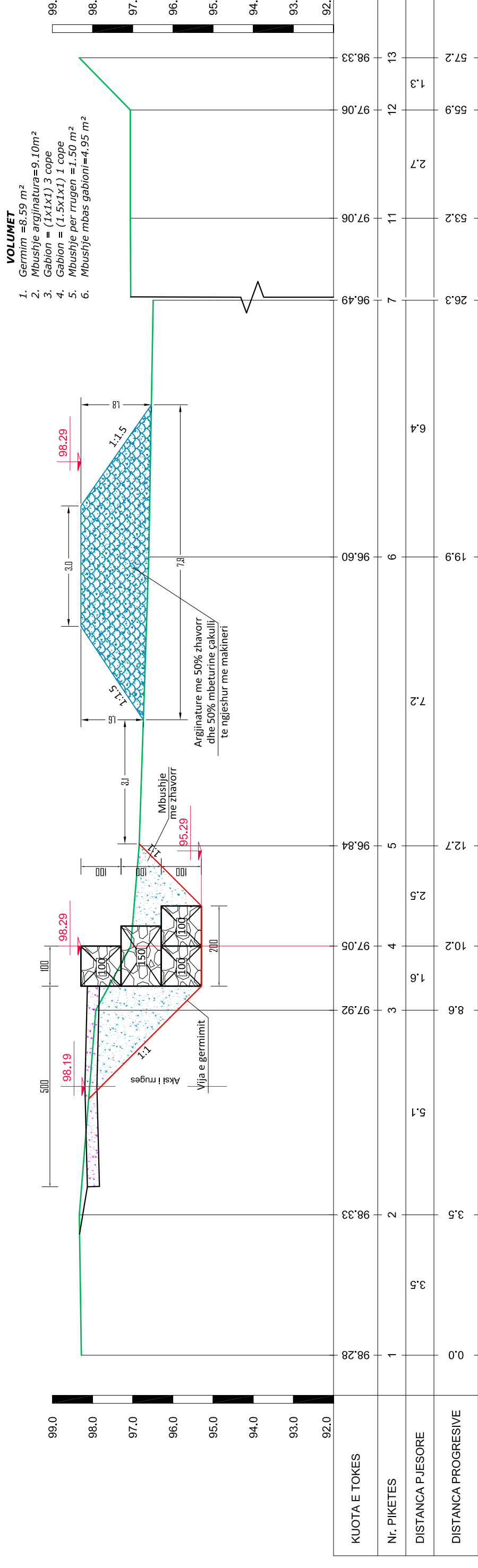
Shkalla 1:100  
Data: Tetor 2016  
FLETA Nr:8



PROFILI TERTHOR PK.5,SH 1:100



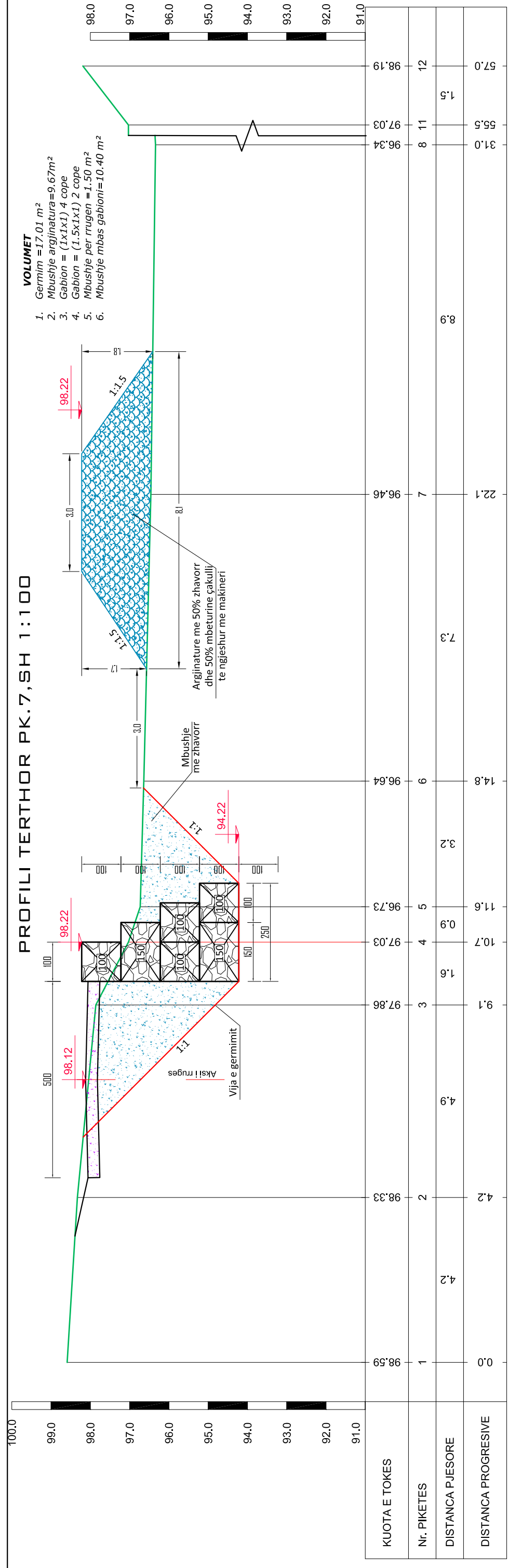
PROFILI TERTHOR PK.6,SH 1:100



BASHKIA MIRDITE	VENDODHJA	BASHKIA MIRDITE	FAZA E PROJEKTIMIT	PROJEKT ZBATIMI	Grupi i Projektimit	Shkalla 1:100
	TITULLI I PROJEKTT	MBROJTE NGA PERROI I JEZULLIT NE FSHATIN JEZULL	TITULLI I VIZATIMIT	PROFILA TERTHOR	Ing.Burhan HAFIZI Top.Tonin PICAKU Ing.Arjola MAZARI Ing.Servet VERCANI	Data: Tetor 2016 FLETA Nr:9
"ANGERBA" sh.p.k.						

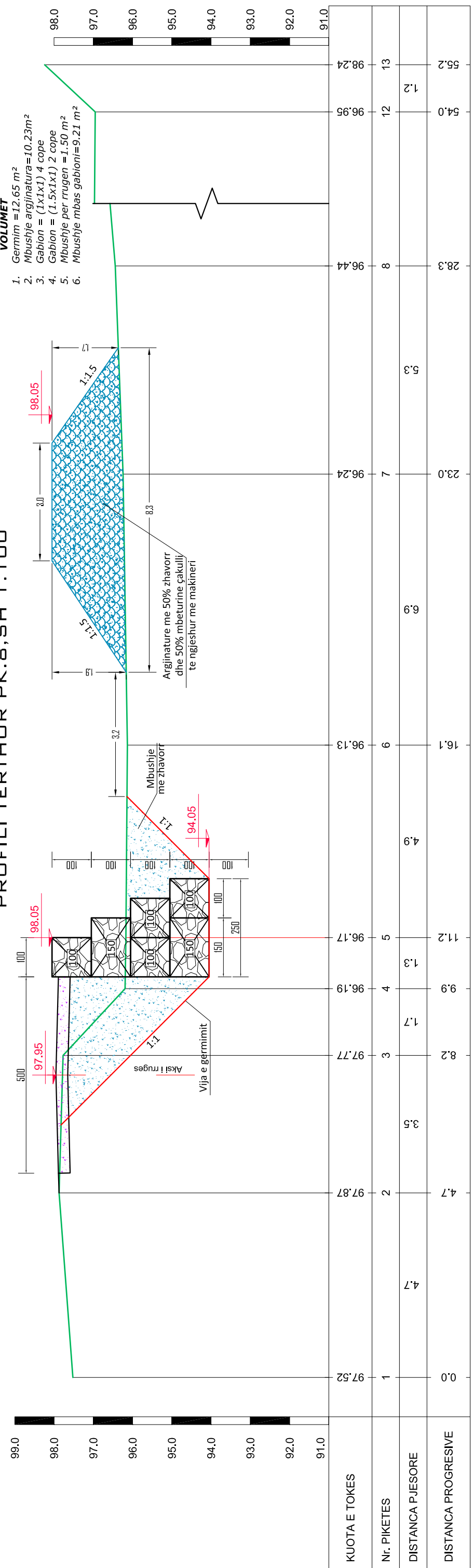


### PROFILI TERTHOR PK.7, SH 1:100



- VOLUMET**
- Germim = 17.01 m<sup>2</sup>
  - Mbushje argjinatura = 9.67 m<sup>2</sup>
  - Gabion = (1x1x1) 4 cope
  - Gabion = (1.5x1x1) 2 cope
  - Mbushje per rrugen = 1.50 m<sup>2</sup>
  - Mbushje mbas gabioni = 10.40 m<sup>2</sup>

### PROFILI TERTHOR PK.8, SH 1:100



- VOLUMET**
- Germim = 12.65 m<sup>2</sup>
  - Mbushje argjinatura = 10.23 m<sup>2</sup>
  - Gabion = (1x1x1) 4 cope
  - Gabion = (1.5x1x1) 2 cope
  - Mbushje per rrugen = 1.50 m<sup>2</sup>
  - Mbushje mbas gabioni = 9.21 m<sup>2</sup>

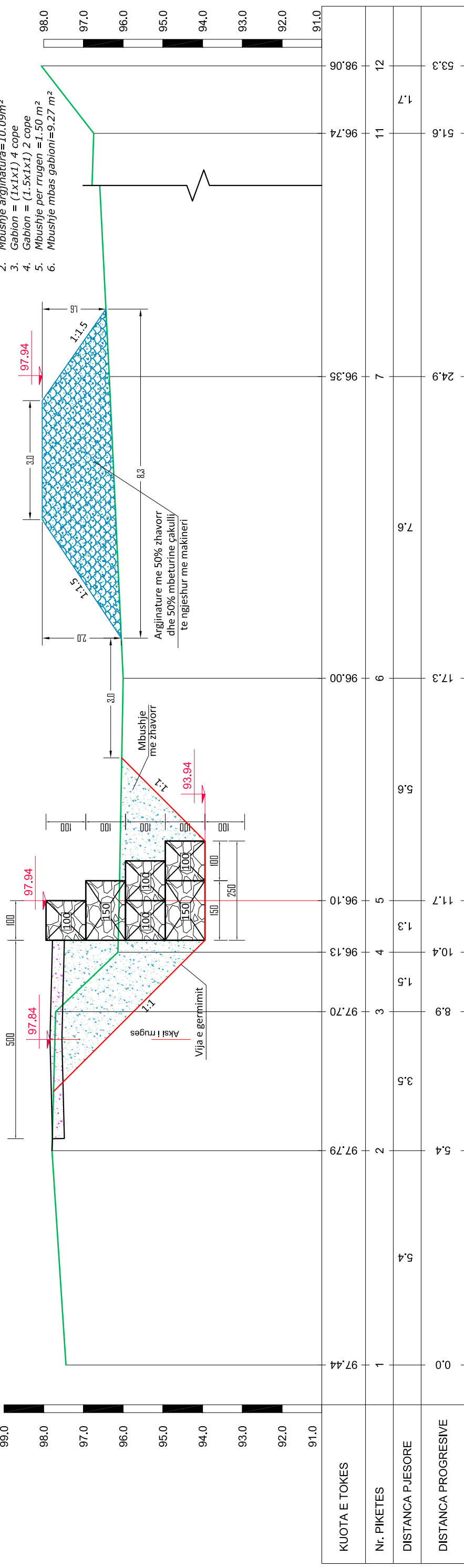
<b>BASHKIA MIRDITE</b>	<b>"ANGERBA" sh.p.k.</b>	<b>MBROJTE NGA PERROI I JEZULLIT NE FSHATIN JEZULL</b>	<b>PROFILI TERTHOR</b>	<b>PROJEKT ZBATIMI</b>		<b>Grupi i Projektimit</b>	
				<b>TITULLI VIZATIMIT</b>	<b>TITULLI VIZATIMIT</b>	Ing. Burhan HAFIZI	Shkalla 1:100
						<b>Data: Tetor 2016</b>	
						<b>FLETA Nr.10</b>	



### PROFILI TERZHOR PK.9, SH 1:100

#### VOLUMET

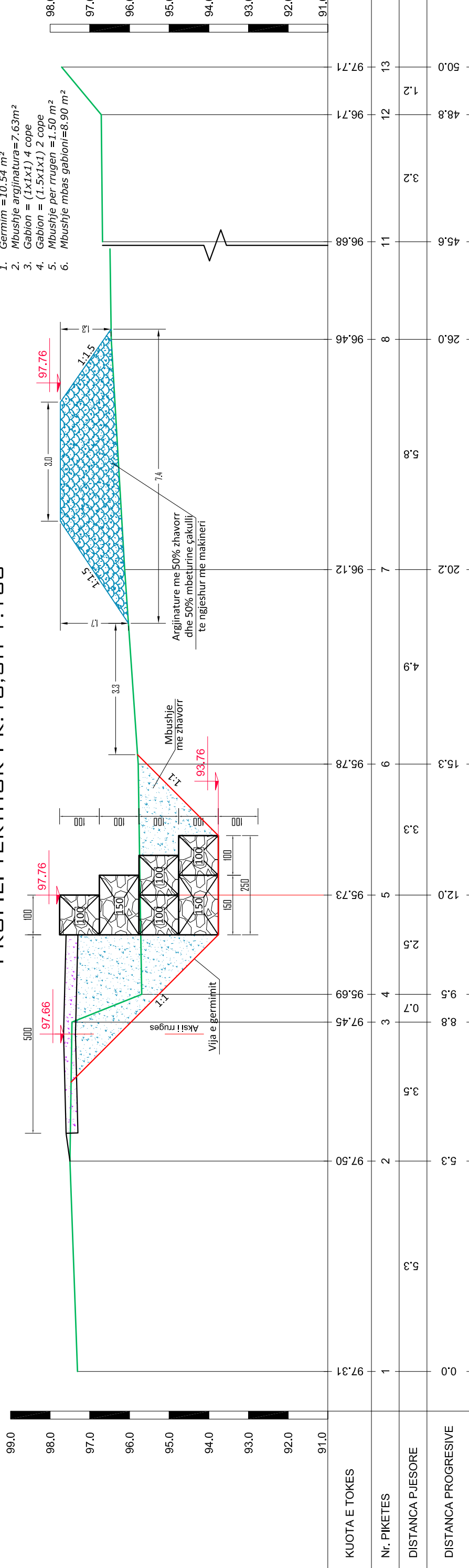
- Germim = 13.10 m<sup>2</sup>
- Mbushje argjinatura = 10.09 m<sup>2</sup>
- Gabion = (1x1x1) 4 cope
- Gabion = (1.5x1x1) 2 cope
- Mbushje per rrugen = 1.50 m<sup>2</sup>
- Mbushje mbas gabioni = 9.27 m<sup>2</sup>



### PROFILI TERZHOR PK.10, SH 1:100

#### VOLUMET

- Germim = 10.54 m<sup>2</sup>
- Mbushje argjinatura = 7.63 m<sup>2</sup>
- Gabion = (1x1x1) 4 cope
- Gabion = (1.5x1x1) 2 cope
- Mbushje per rrugen = 1.50 m<sup>2</sup>
- Mbushje mbas gabioni = 8.90 m<sup>2</sup>



BASHKIA MIRDITE

"ANGERBA" sh.p.k.

MBROJTE NGA PERROI I JEZULLIT  
NE FSHATIN JEZULL

PROFILA TERZHOR

PROJEKT ZBATIMI

Grupi i Projektimit  
Ing. Burhan HAFIZI  
Top. Tonin PICAKU  
Ing. Arjola MAZARI  
Ing. Servet VERCANI

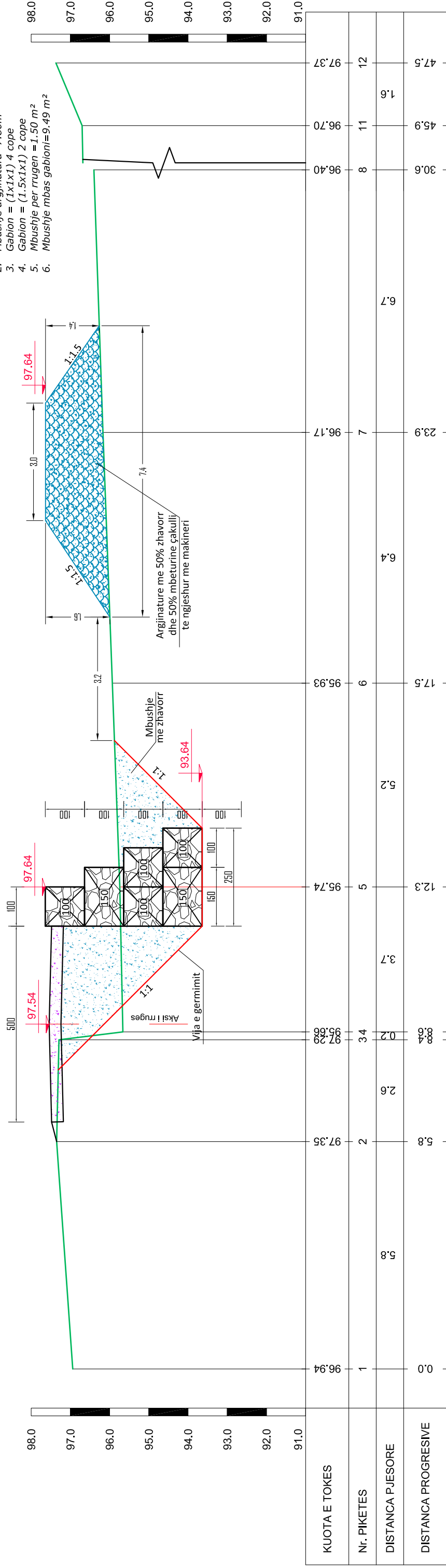
Shkalla 1:100  
Data: Tetor 2016  
FLETA Nr. 11



**PROFILI TERTHOR PK.11, SH 1:100**

**VOLUMET**

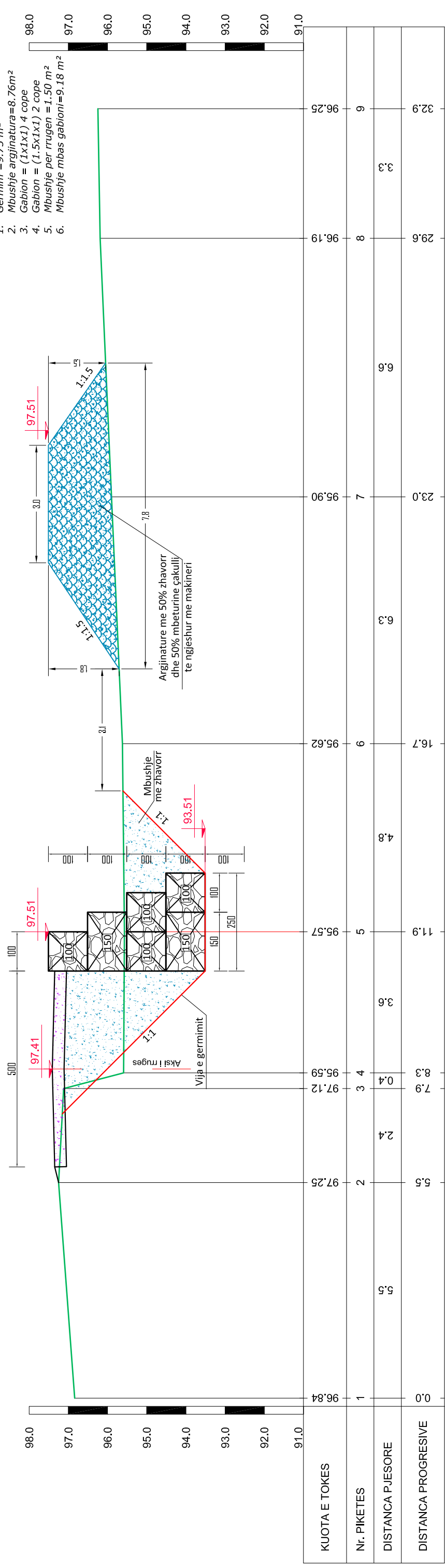
- Germim = 10.13 m<sup>2</sup>
- Mbushje argjinatura = 7.80 m<sup>2</sup>
- Gablon = (1x1x1) 4 cope
- Gablon = (1.5x1x1) 2 cope
- Mbushje per rrugen = 1.50 m<sup>2</sup>
- Mbushje mbas gabloni = 9.49 m<sup>2</sup>



**PROFILI TERTHOR PK.12, SH 1:100**

**VOLUMET**

- Germim = 9.75 m<sup>2</sup>
- Mbushje argjinatura = 8.76 m<sup>2</sup>
- Gablon = (1x1x1) 4 cope
- Gablon = (1.5x1x1) 2 cope
- Mbushje per rrugen = 1.50 m<sup>2</sup>
- Mbushje mbas gabloni = 9.18 m<sup>2</sup>



**BASHKIA MIRDITE**

**"ANGERBA" sh.p.k.**

**MBROJTE NGA PERROI I JEZULLIT NE FSHATIN JEZULL**

**PROFILA TERTHOR**

**PROJEKT ZBATIMI**

**Grupi i Projektimit**

**Shkalla 1:100**

**Data: Tetor 2016**

**Ing. Burhan HAFIZI**

**Top. Tonin PICAKU**

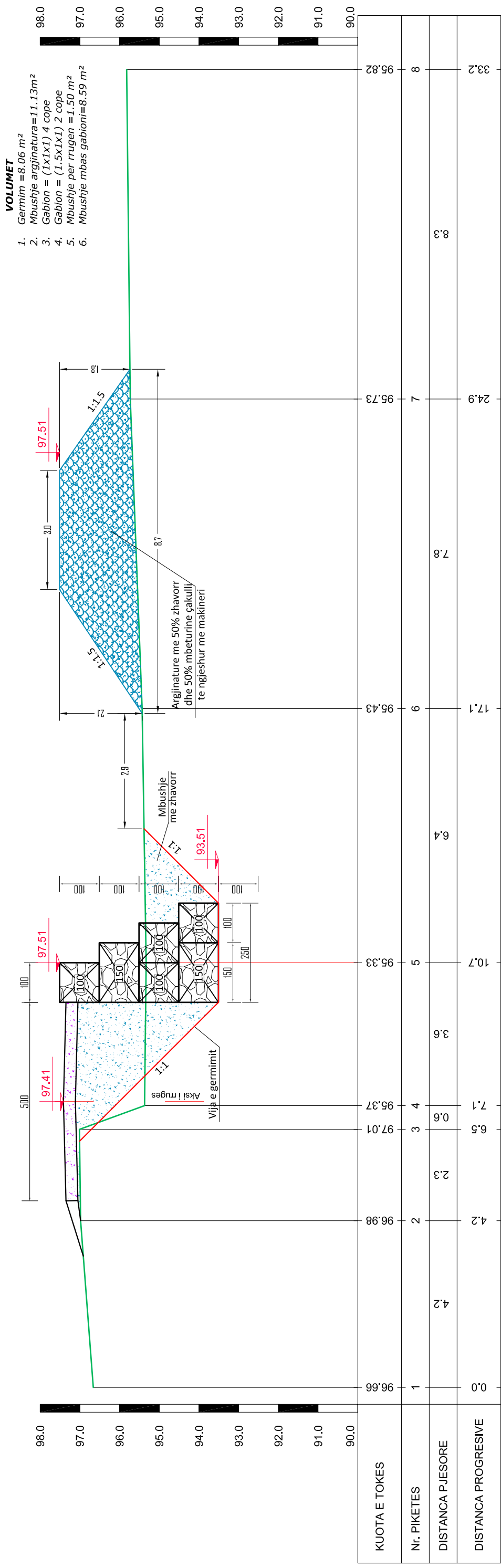
**Ing. Arjola MAZARI**

**Ing. Servet VERCANI**

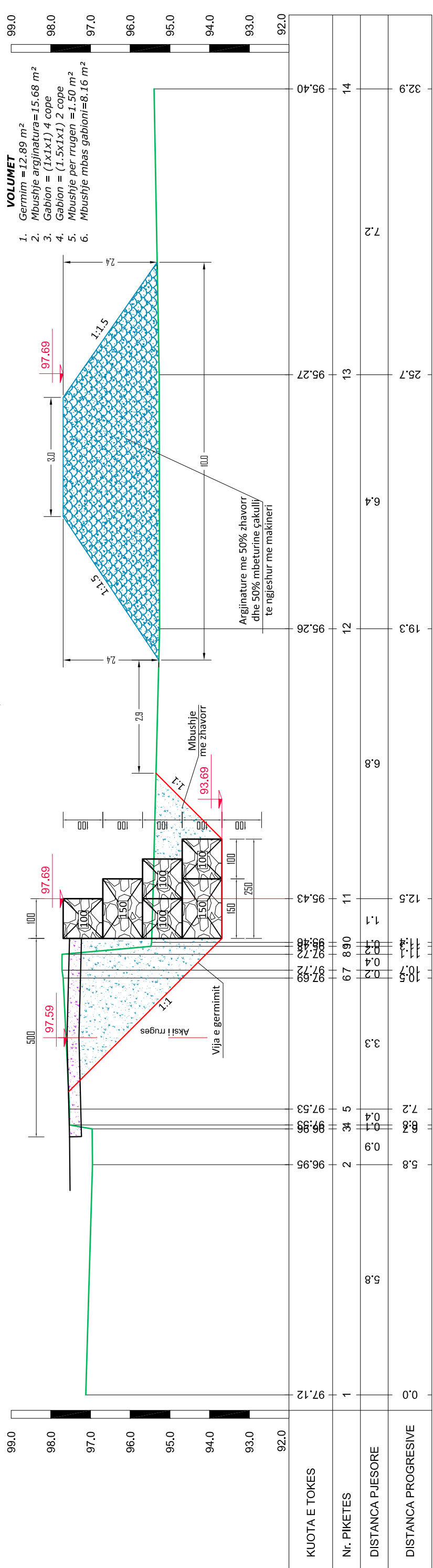
**FLETA Nr.12**



PROFILI TERTHOR PK.13,SH 1:100



PROFILI TERTHOR PK.14,SH 1:100



BASHKIA MIRDITE

"ANGERBA" sh.p.k.

VENDODHJA  
BASHKIA MIRDITE  
TITULLI PROJEKTI  
MBROJTE NGA PERROI I JEZULLIT  
NE FSHATIN JEZULL

FAZA E PROJEKTIMIT  
PROJEKT ZBATIMI

PROFILI TERTHOR

Grupi i Projektimit  
Ing. Burhan HAFIZI  
Top. Tonin PICAKU  
Ing. Arjola MAZARI  
Ing. Servet VERCANI

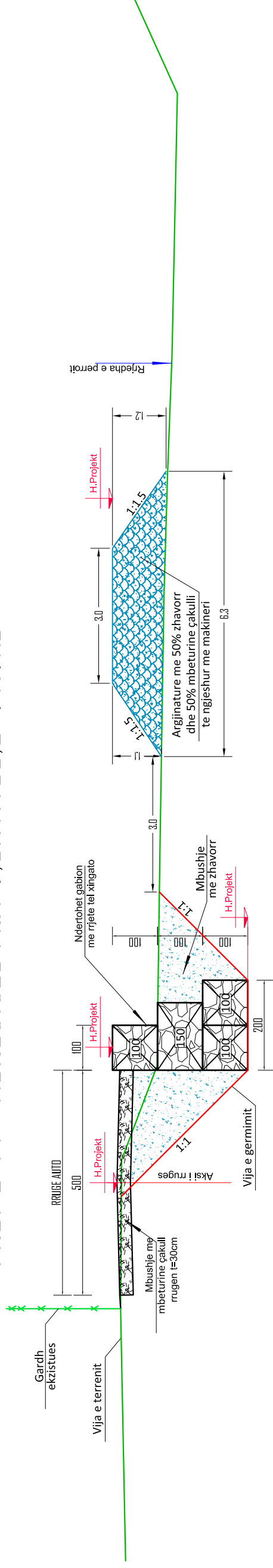
Shkalla 1:100

Data: Tetor 2016

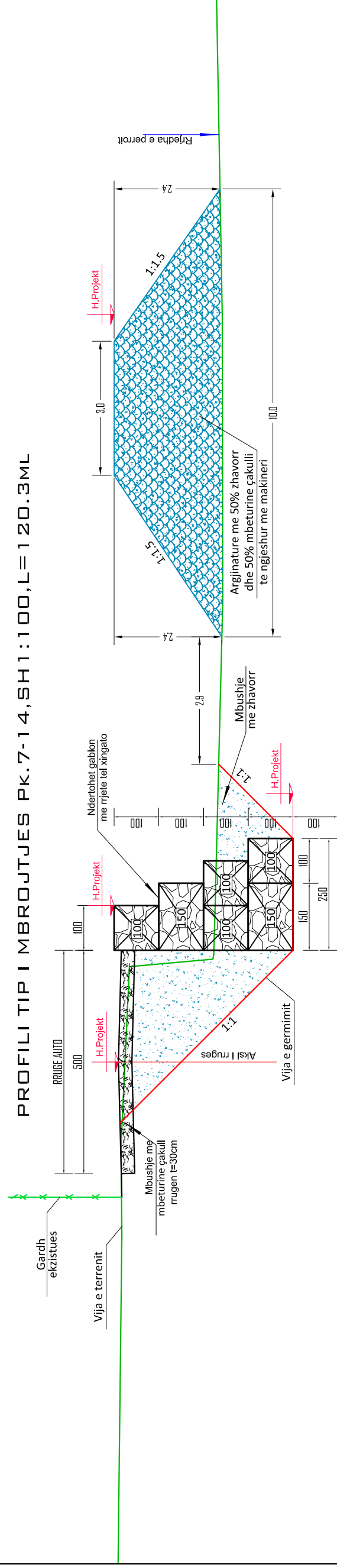
FLETA Nr.13



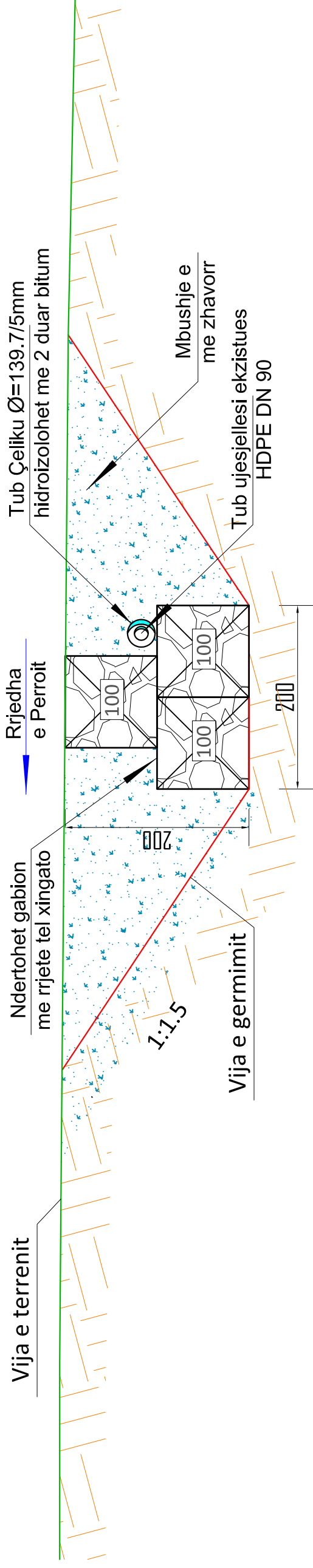
PROFILI TIP I MBROJTJES PK.1-7, SH1:100, L=71.7ML



PROFILI TIP I MBROJTJES PK.7-14, SH1:100, L=120.3ML



PROFILI TIP I KALIMIT TE TUBIT TE UJESJELLESIT NE SHTRATIN E PERROIT JEZULL, SH1:50, L=80ML



BASHKIA MIRDITE

"ANGERBA" sh.p.k.

VENDODHJA  
BASHKIA MIRDITE

TITULLI PROJEKTIT  
MBROJTE NGA PERROI I JEZULLIT  
NE FSHATIN JEZULL

FAZA E PROJEKTIMIT  
PROJEKT ZBATIMI

TITULLI VIZATIMIT  
PROFILAT TIP

Grupi i Projektimit

Ing.Burhan HAFIZI

Top.Tonin PICAKU

Ing.Arjola MAZARI

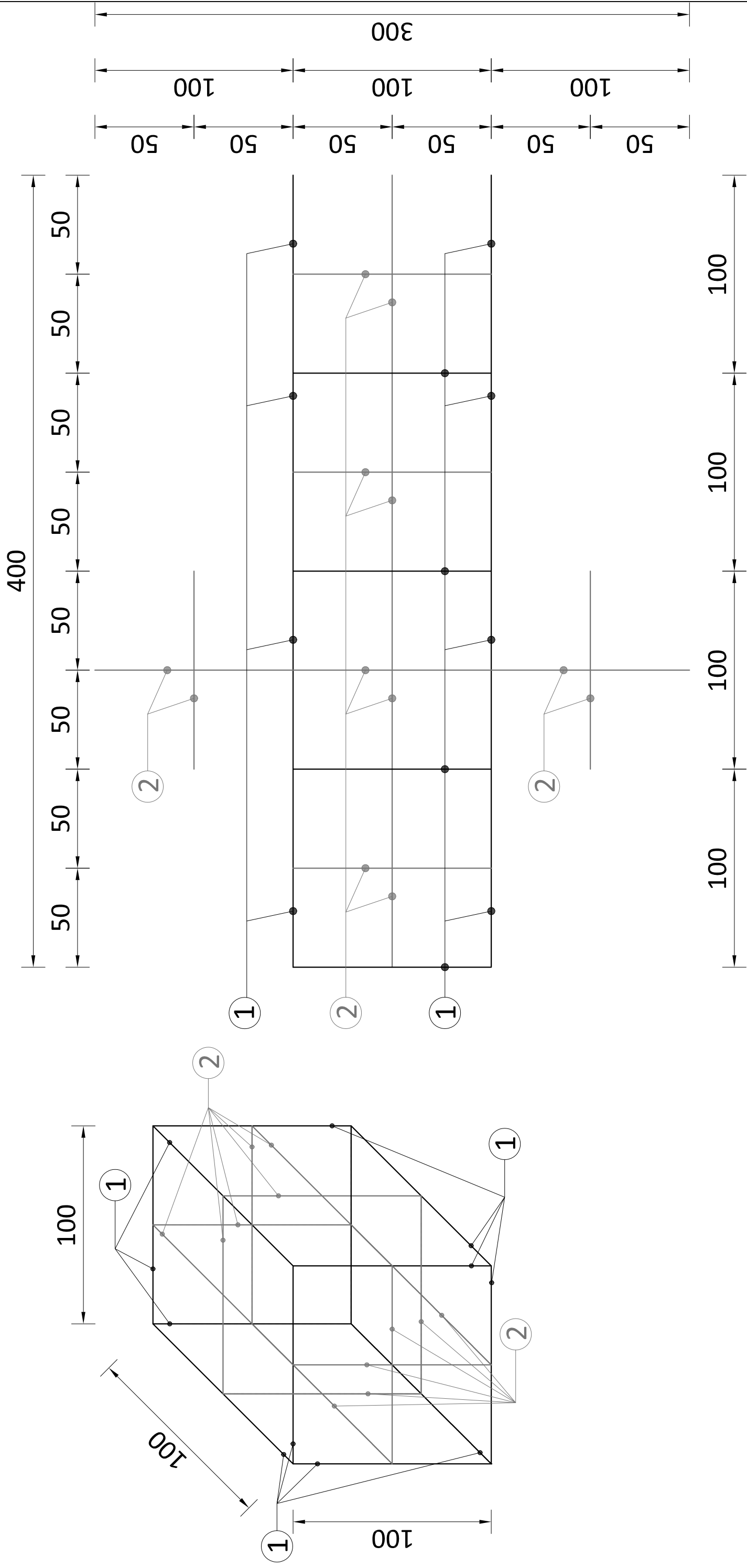
Ing.Servet VERCANI

Shkalla 1:50;1:100

Data: Tetor 2016

FLETA Nr.14

# SKEMA E KOSHAVE METALIKË DHE HAPJA E HEKURAVE (1x1x1)m



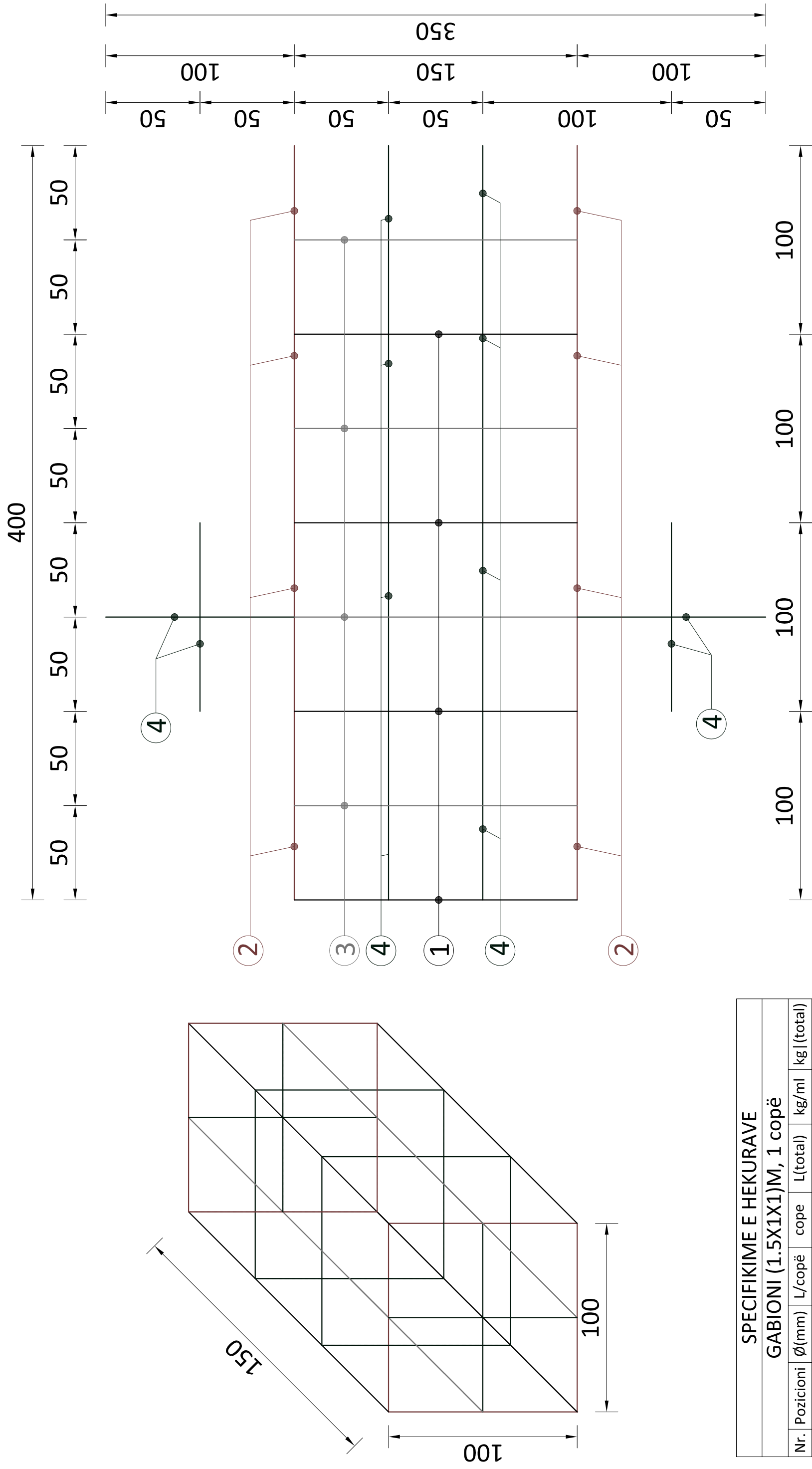
## SPECIFIKIME E HEKURAVE GABIONI (1X1X1)M, 1 copë

Nr.	Pozicioni	Ø(mm)	L/copë	cope	L(total)	kg/ml	kg (total)
1	1	12	1.00	12	12.00	0.888	10.656
2	2	6	1.00	12	12.00	0.220	2.640
PESHA TOTALE							13.2960

VENDOSHIA BASHKIA MIRDITE TITULLI I PROJEKTTIT MBROJTE NGA PERROI I JEZULLIT NE FSHATIN JEZULL	FAZA E PROJEKTTIMIT PROJEKT ZBATIMI TITULLI I VEZATIMIT KOSHAT E GABIONAVE, DETAJE	Grupi i Projektimit Ing. Burhan HAFIZI	Shkalla 1:20
		Ing. Ajola MAZARI Ing. Servet VERCANI	Data: Tetor 2016 FLETA Nr:15
BASHKIA MIRDITE	"ANGERBA" sh.p.k.		



# SKEMA E KOSHAVE METALIKË DHE HAPJA E HEKURAVE (1.5x1x1)m



SPECIFIKIME E HEKURAVE					
GABIONI (1.5X1X1)M, 1 copë					
Nr. Pozicioni	Ø(mm)	L/copë	L/copë	kg/ml	kg (total)
1	12	1.50	4	0.888	5.328
2	12	1.00	8	0.888	7.104
3	6	1.50	4	0.220	1.320
4	6	1.00	12	0.220	2.640
PESHA TOTALE					16.3920

VENDOSHJA BASHKIA MIRDITE TITULLI PROJEKTTI MBROJTE NGA PERROI I JEZULLIT NE FSHATIN JEZULL	FAZA E PROJEKTIMIT PROJEKT ZBATIMI TITULLI VEZATIMIT KOSHA E GABIONAVE, DETAJE	Grupi i Projektimit Ing. Burhan HAFIZI	Shkalla 1:20
		Ing. Servet VERCANI	Data: Tetor 2016
"ANGERBA" sh.p.k.		FLETA Nr:16	