



REPUBLIKA E SHQIPËRISË
BASHKIA LIBRAZHD

MIRATOHET
KRYETARI

PROJEKT - ZBATIMI

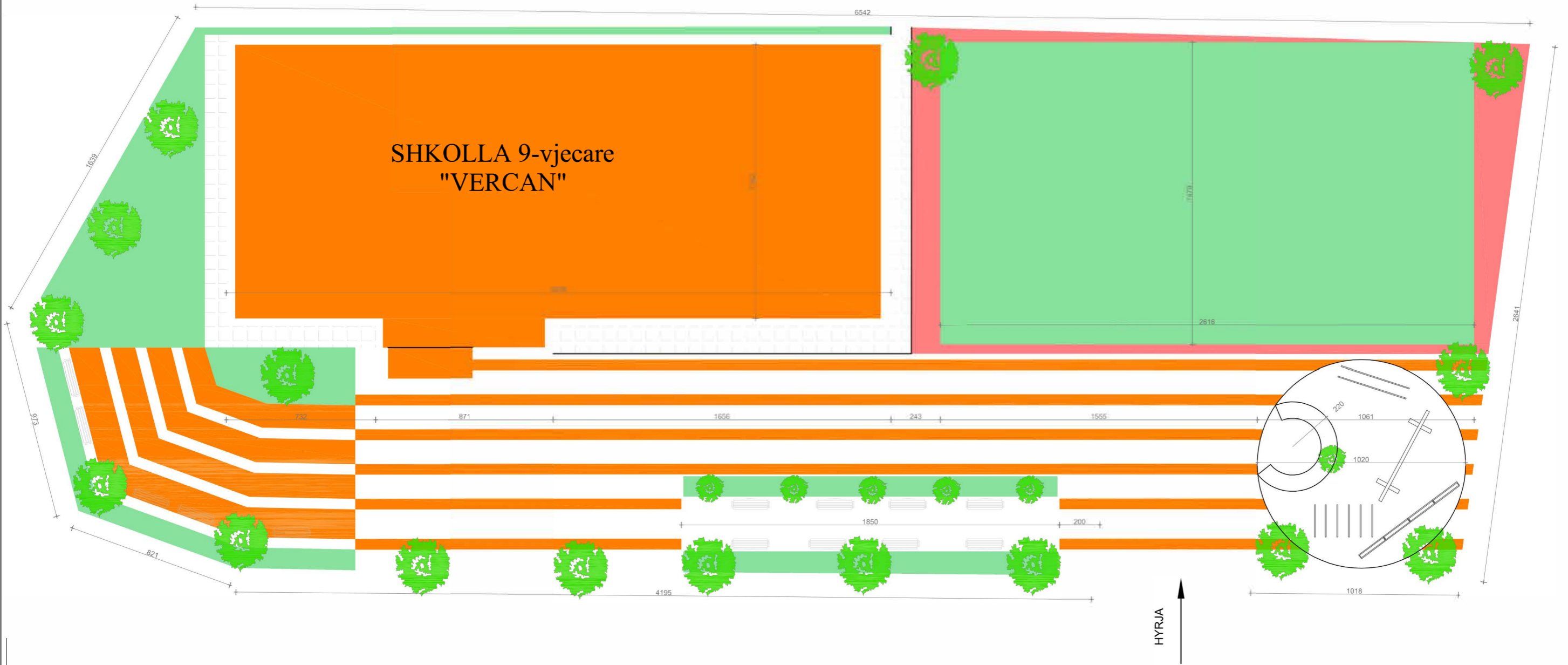
**Objekt: RIKONSTRUKSIONI I PJESSHEM SHKOLLA 9-VJECARE VEHCAN,
NJ.A. HOTOLISHT**



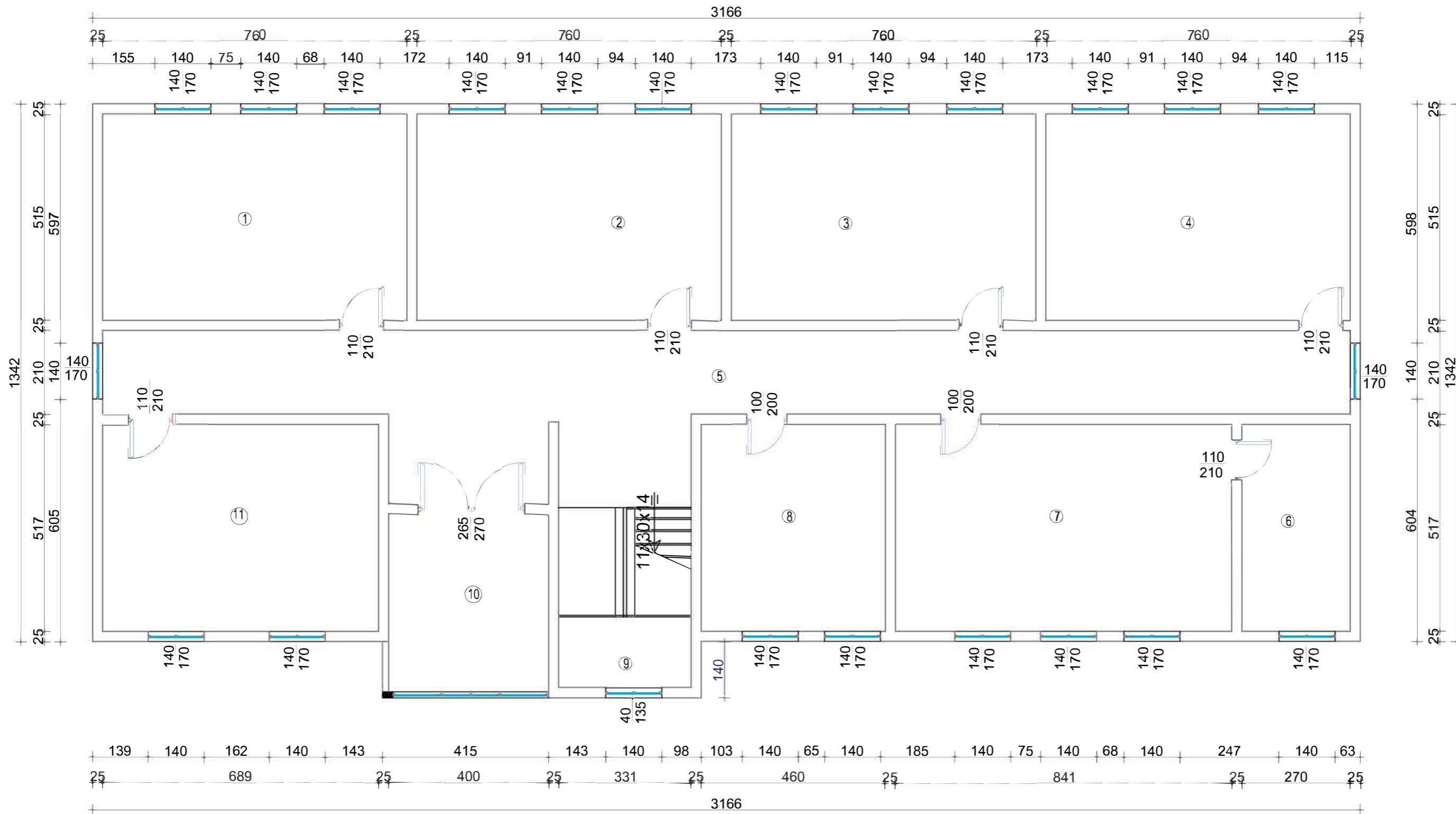
DREJTORI:

SEKTORI I PROJEKTEVE DHE INVESTIMEVE
GRUPI I PROJEKTIMIT:

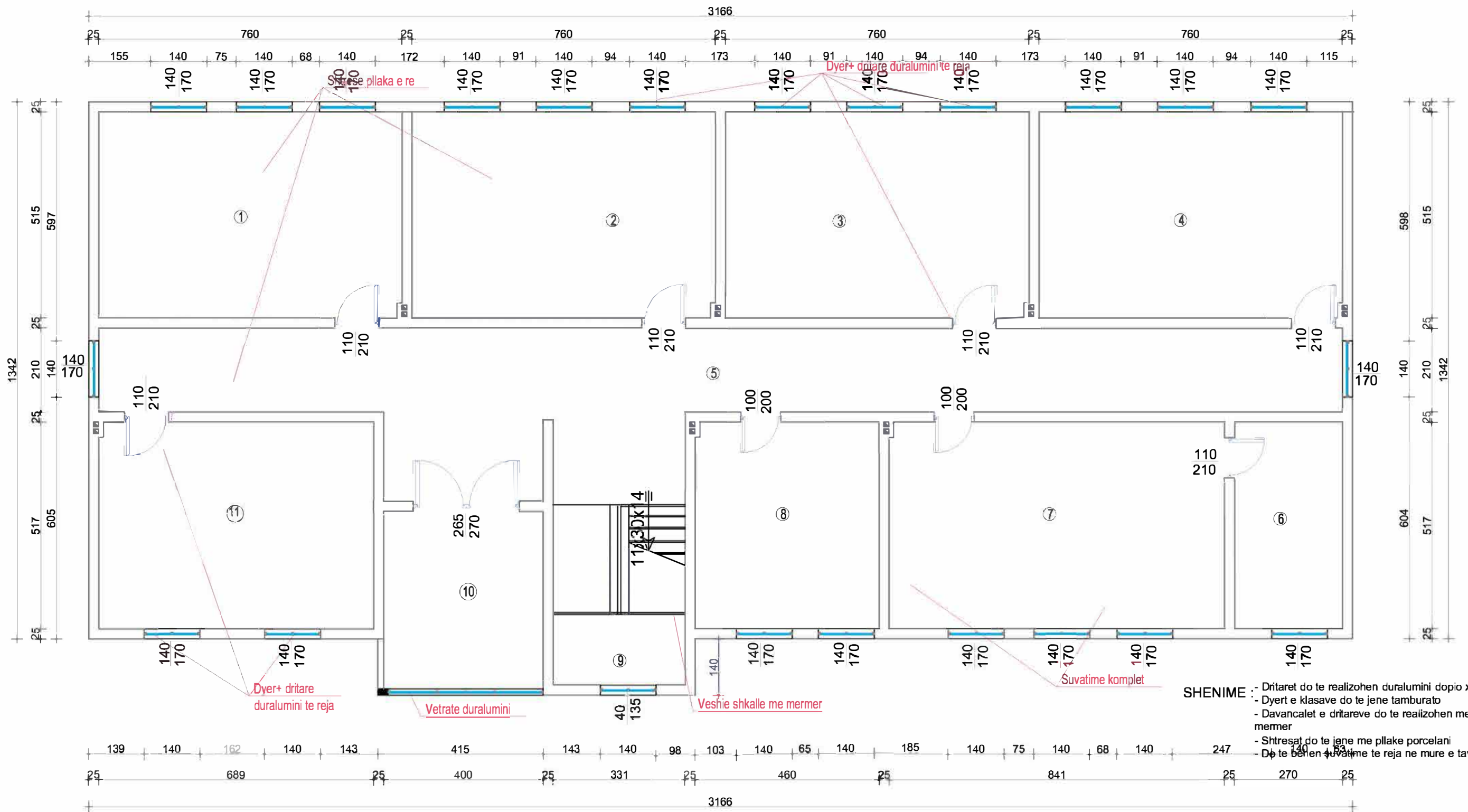
PLAN SISTEMIMI I SHKOLLES



PLANIMETRIA E KATIT TE PARE - EKZISTUESE

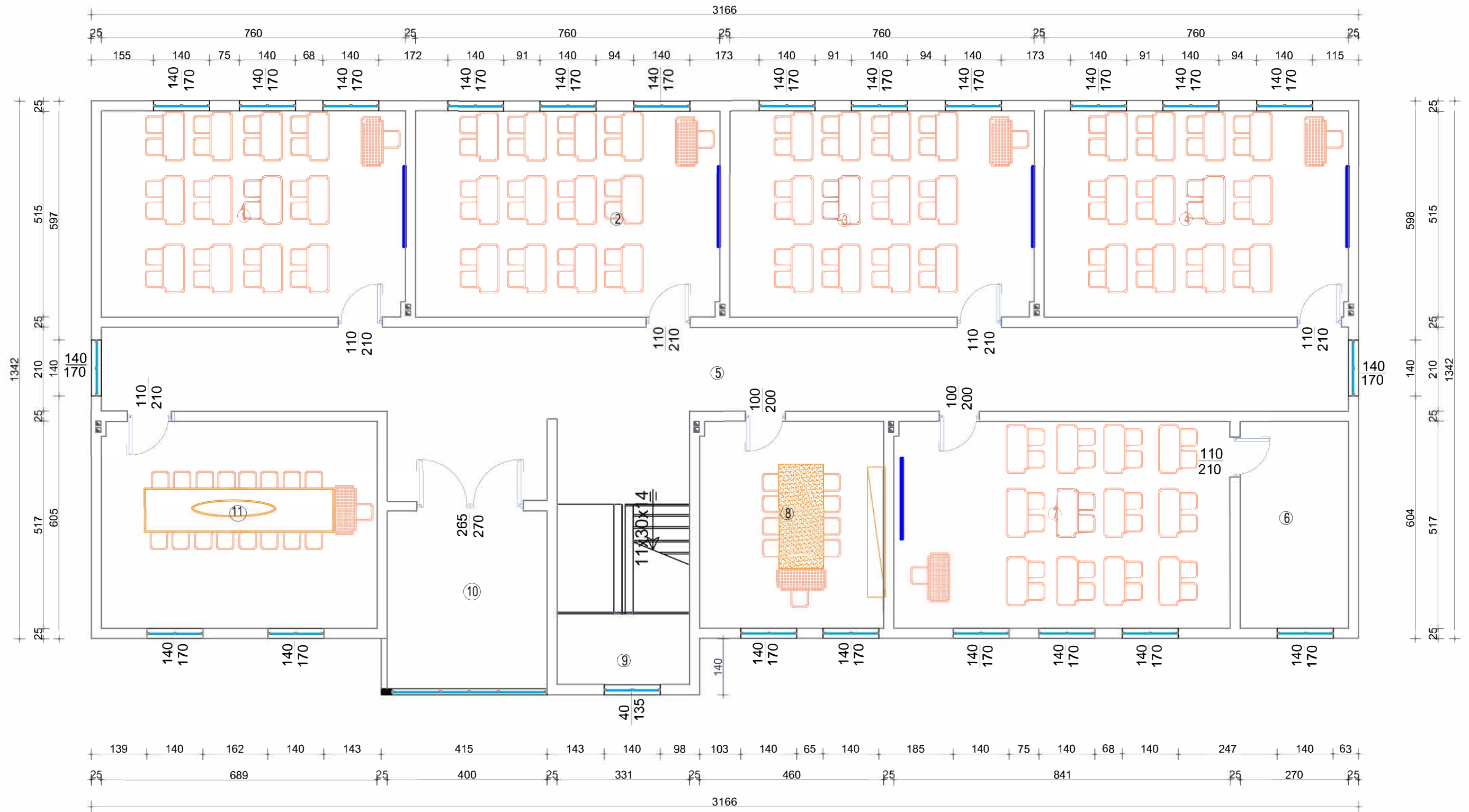


PLANIMETRIA E KATIT TE PARE - RIKONTRUKSIONI



SHENIME :- Dritaret do te realizohen duralumini dopio xham .
 - Dyer e klasave do te jene tamburato
 - Davancalet e dritareve do te realizohen me mermer
 - Shtresat do te jene me pllake porcelani
 - Dyt te beren suvatime te reja ne mure e tavane

PLANIMETRIA E KATIT TE PARE - PLANI FUNKSIONAL



FASADA BALLORE E SHKOLLES



SHKOLLA 9-VJEÇARE

VEHÇAN

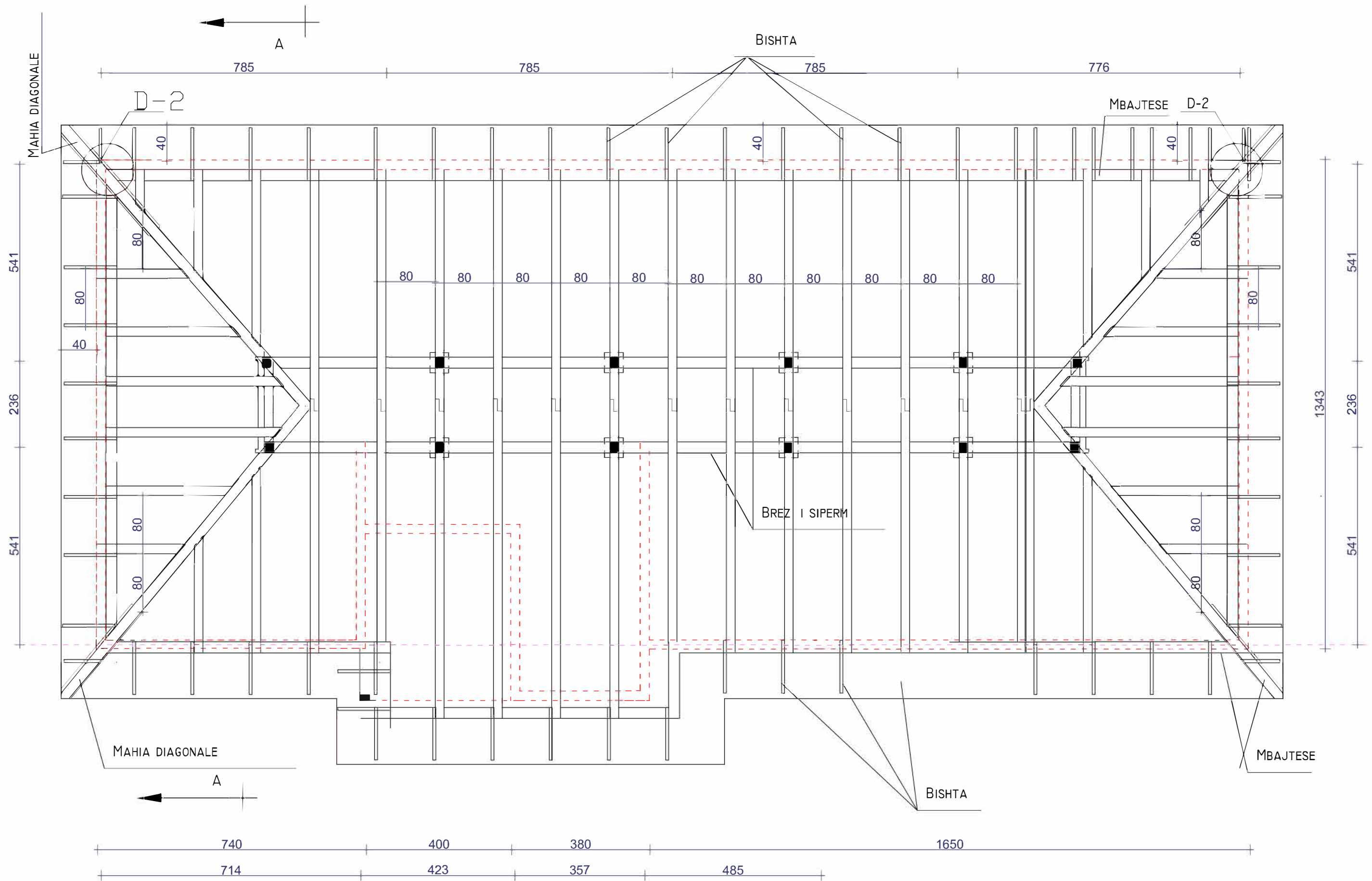
+6.00

+3.00

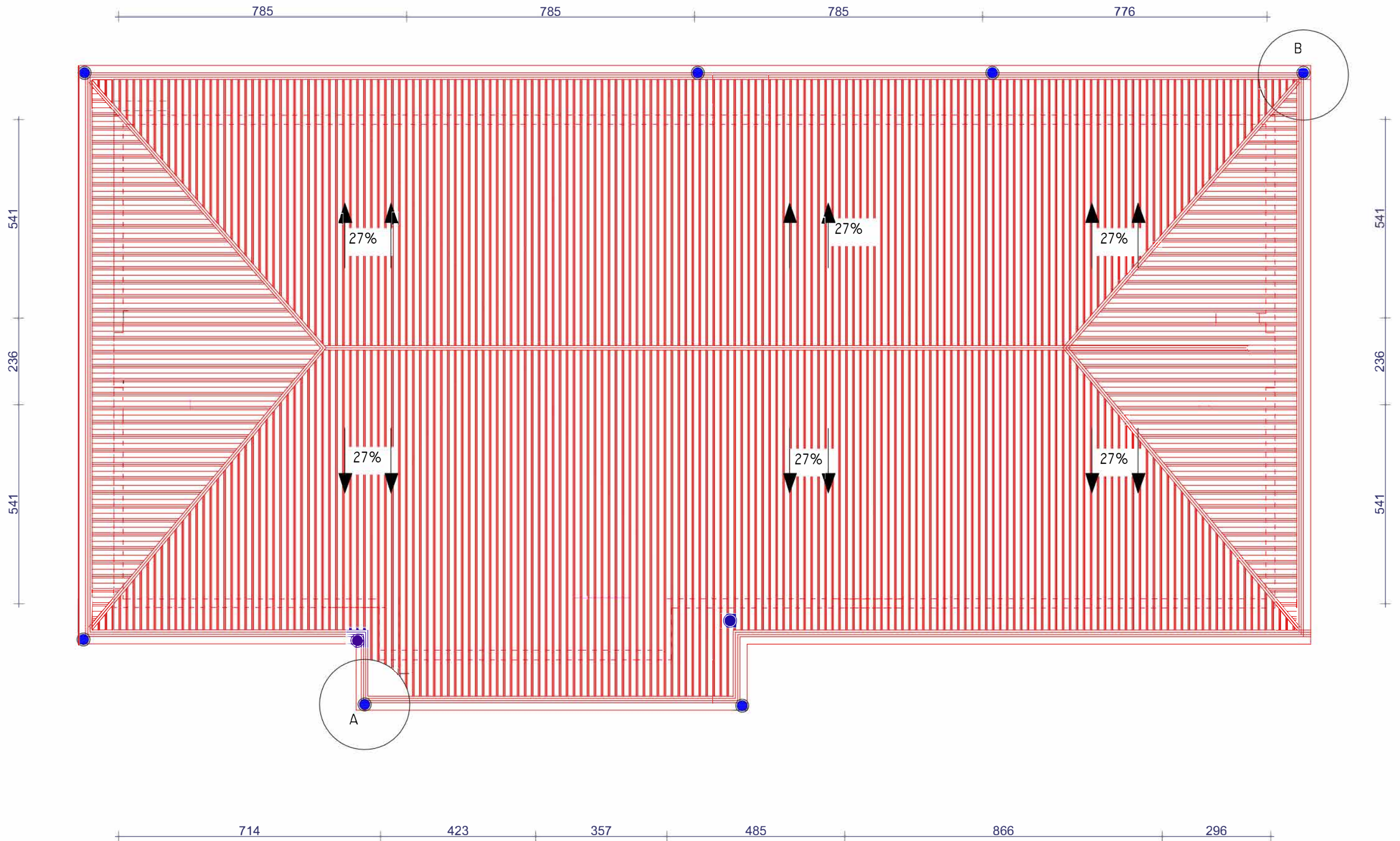
±0.00

-0.75

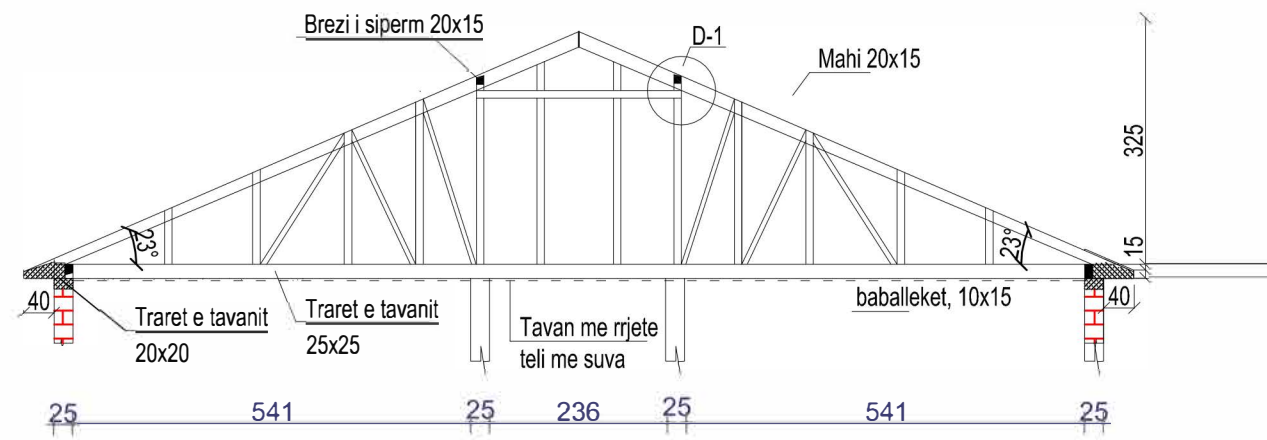
PLANIMETRIA E KONSTRUKSIONIT TE CATISE SE SHKOLLES



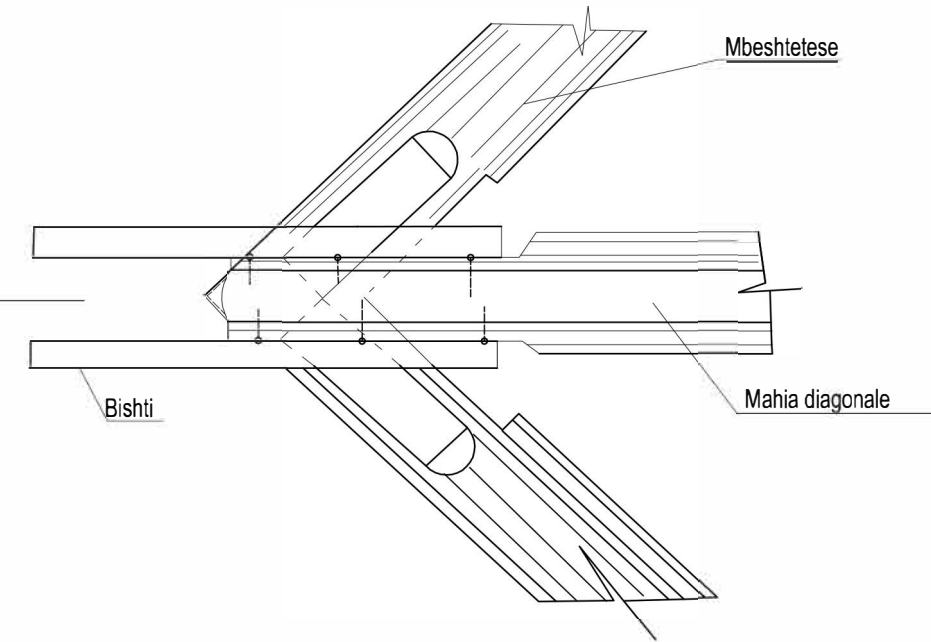
PLANIMETRIA E CATISE SE SHKOLLES



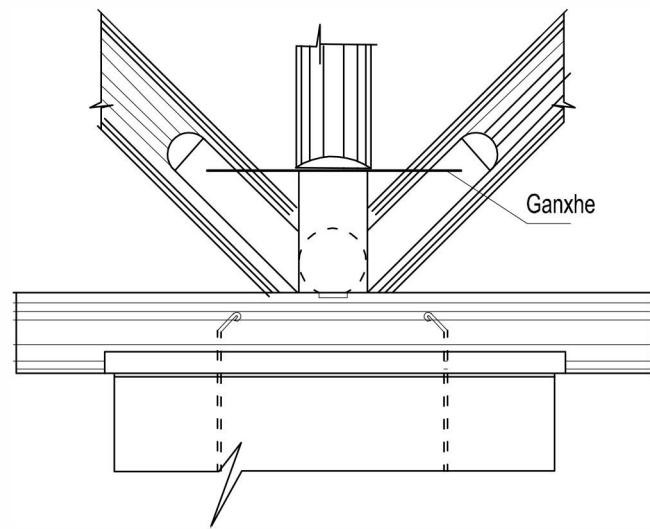
PRERJA A-A E CATISE SE SHKOLLES



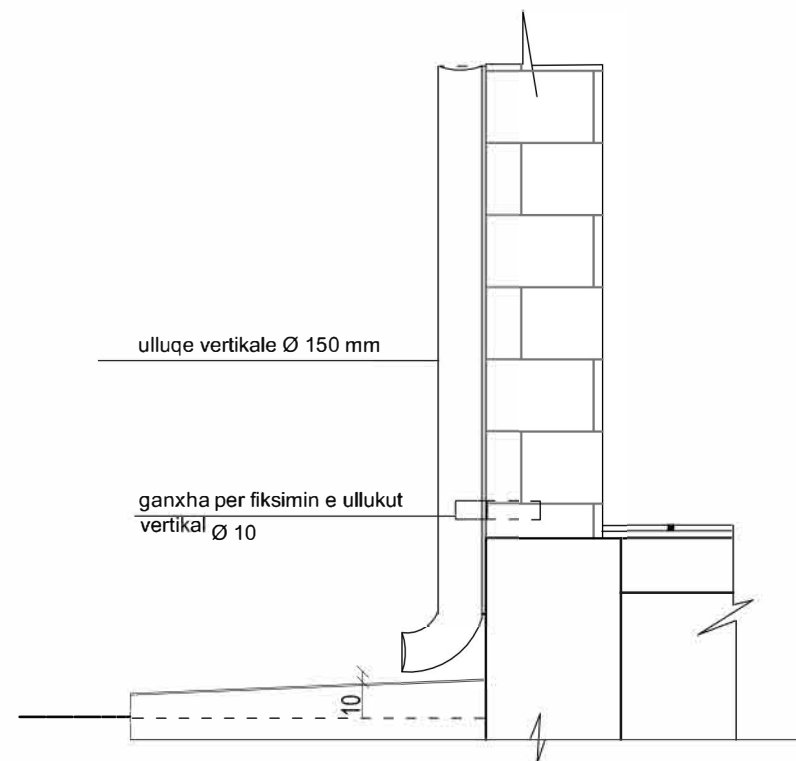
HOLLESIA D-2



HOLLESIA D-1



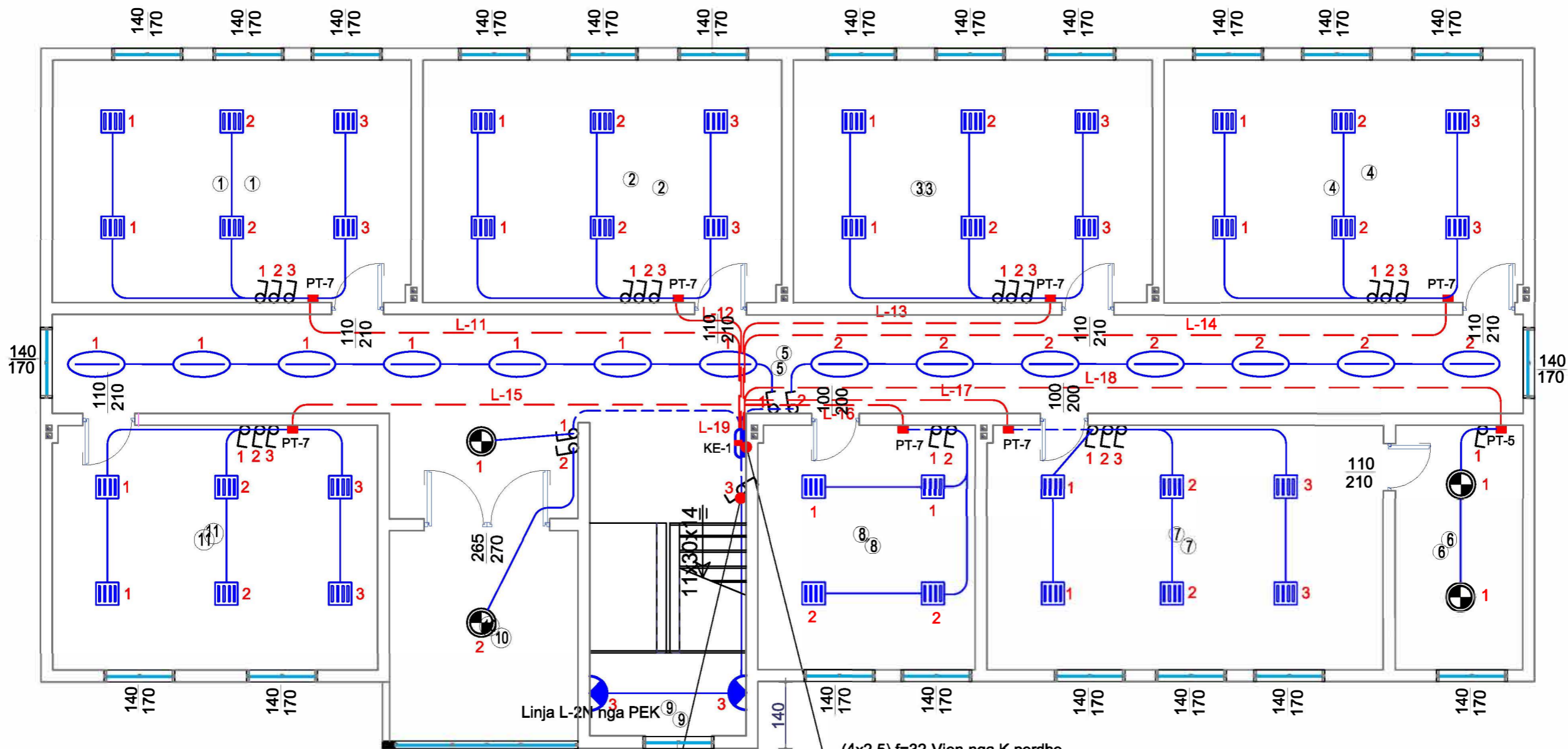
DETAJ SHKARKIMI



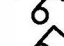










SHENIME TEKNIKE

- 1- Çatija do të realizohet e thjeshtë .
- 2- Mbjtësja e mahive të çatise do të jetë kapur me brezin beton arme me Ø 10mm .
- 3- Mbulimi i çatisë do të bëhet me tjegulla marsejeze .
- 4- Listelat për mbajtjen e tjegullave do të vendosen 5x5 mm çdo 30 cm .
- 5 - Pjerrësia e çatise do të jetë 27%.
- 6- Realizimi i çatisë do të bëhet me lëndë druri të stazhionuar.
- 7-Elementet vertikale të fiksohen me kujdes.
- 8- Mbi listelat do të vendoset letër katërma për izolim

**PLANIMETRIA E KATIT TE PARE
INSTALIMET ELEKTRIKE TE NDRICIMIT-CELESAT**



-  PANEL ELEKTRIK METALIK JASHTE MURIT ME DERE TRASPARENTE ME CELES
-  KUTI DERIVACIONI PT-5,PT-7,PT-8 KAPET ME VIDA
-  ÇELËS ELEKTRIK 10A-250V /1P
-  ÇELËS ELEKTRIK 10A-250V /2P DEVIJAT
-  NDRIÇUES NEONI 4x18W PLAFONIER DHE REFLEKTOR
-  NDRIÇUES NEONI 2x36W PLAFONIER DHE REFLEKTOR
-  NDRIÇUES ANESOR ME LL.EKONOMIKE 1x25W
-  NDRIÇUES PLAFONIER RRETHORE LL.EKONOMIKE 1x25W
-  LINJË ME PERCJELLES ELEKTRIK NE TUB PLASTIK
-  LINJË ME PERCJELLES ELEKTRIK NE TUB PLASTIK
-  LINJË ME PERCJELLES ELEKTRIK NE TUB PLASTIK

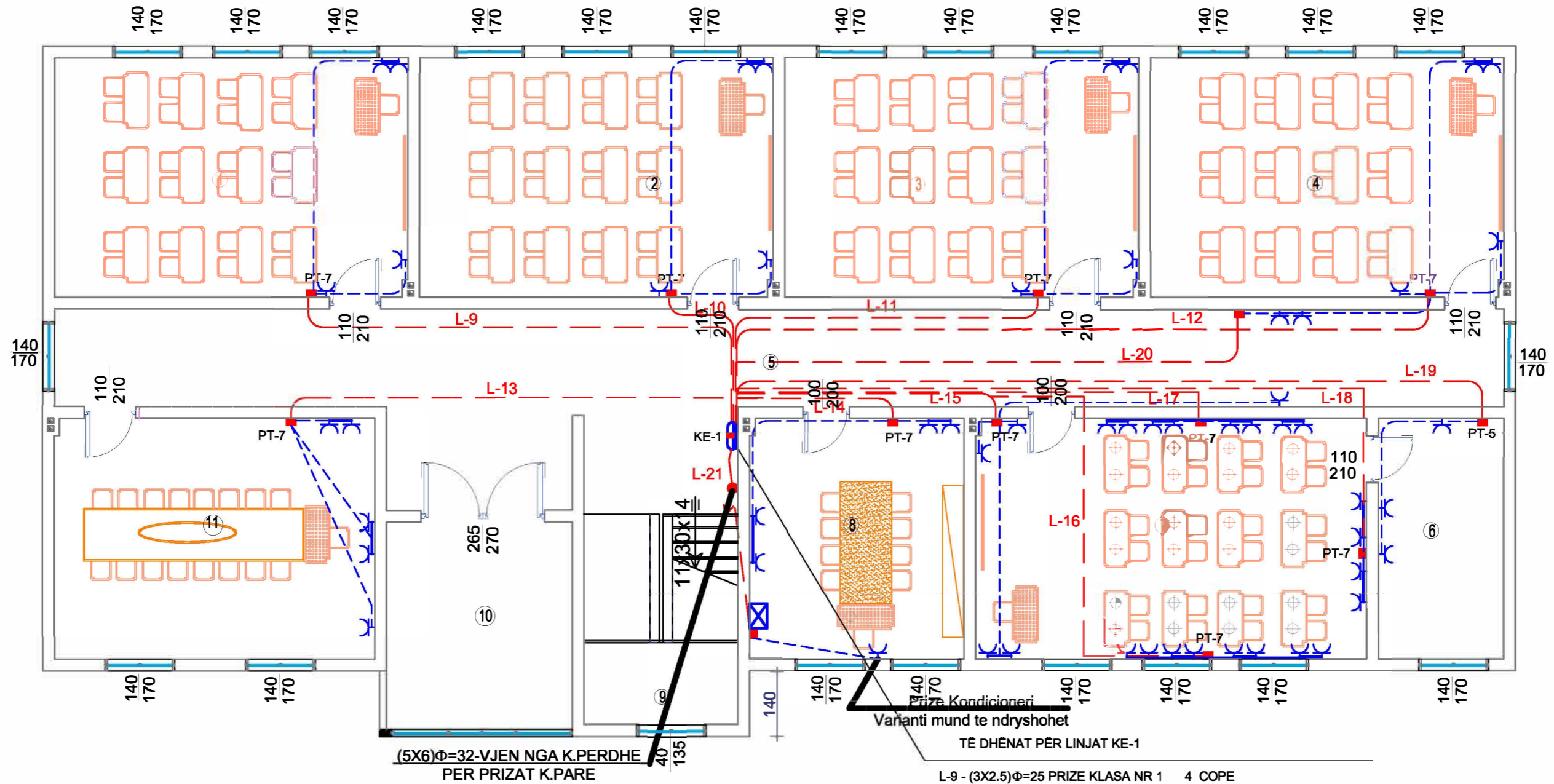
(3x1.5) f=20 - Vjen nga K.Perdhe per
Celesin devijat Nr.1 ne hyrje te K.pare

(4x2.5) f=32-Vjen nga K.perdhe
per ndricim e K.Pare

TË DHËNAT PËR LINJAT NGA PEK

L-11 - (2x1.5)f= 25	Ndricim klasa 1, 6 COPË
L-12 - (2x1.5)f= 25	Ndricim klasa 2, 6 COPË
L-13 - (2x1.5)f= 25	Ndricim klasa 3, 6 COPË
L-14 - (2x1.5)f= 25	Ndricim klasa 4, 6 COPË
L-15 - (2x1.5)f= 25	Ndricim ambienti 11 (salla e mesuesve), 6 COPË
L-16 - (2x1.5)f= 25	Ndricim ambienti 8 (drejtoria), 4 COPË
L-17 - (2x1.5)f= 25	Ndricim ambienti 7(laborator,intemeti), 6 COPË
L-18 - (2x1.5)f= 25	Ndricim ambienti 6(magazine), 2 COPË
L-19 - (2x2.5)f= 25	Ndricim(ambienti 5,10) koridor i brendshem 16 COPË








**PLANIMETRIA E KATIT TE PARE
INSTALIMET ELEKTRIKE TE NDRICIMIT-PRIZAT**



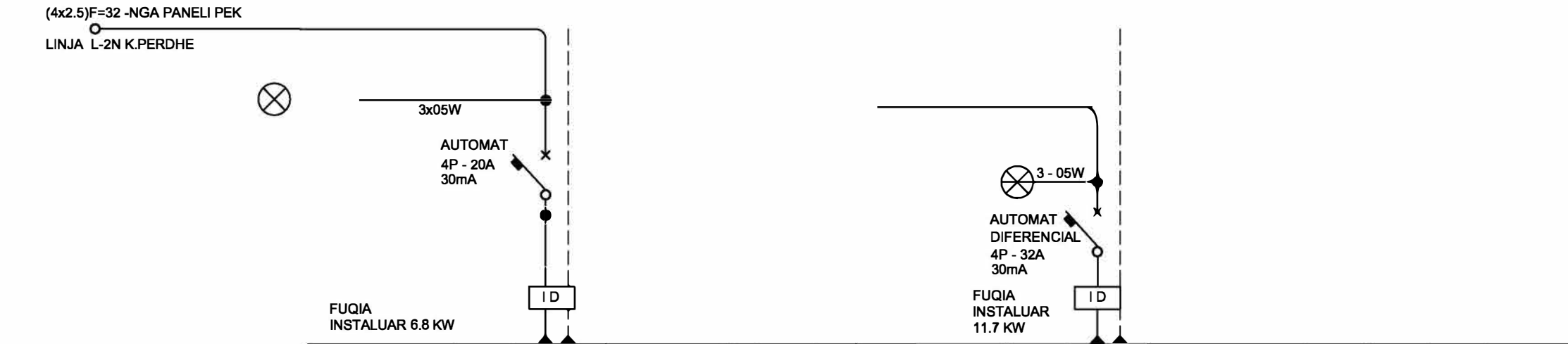
Prize Kondicioneri
Varianti mund te ndryshohet

TË DHËNAT PËR LINJAT KE-1

L-9 - (3X2.5)Φ=25 PRIZE KLASA NR 1	4 COPE
L-10 - (3X2.5)Φ=25 PRIZE KLASA NR 2	4 COPE
L-11 - (3X2.5)Φ=25 PRIZE KLASA NR 3	4 COPE
L-12 - (3X2.5)Φ=25 PRIZE KLASA NR 4	4 COPE
L-13 - (3X4)Φ=25 SALLA E MESUESVE	5 COPE
L-14 - (3X2.5)Φ=20 FURNIZIM AKSESOR PRIZA NE KABINET RRJETI	5 COPE
L-15 - (3X4)Φ=25 PRIZE GRUPI 2.3- INFORMATIKE	4 COPE
L-16 - (3X4)Φ=25 PRIZE GRUPI 5.6.7.8 - INFORMATIKE	8 COPE
L-17 - (3X4)Φ=25 PRIZE GRUPI 9.10.11.12 - INFORMATIKE	8 COPE
L-18 - (3X4)Φ=25 PRIZE GRUPI 13.14.15.16 - INFORMATIKE	8 COPE
L-19 - (3X2.5)Φ=25 PRIZE MAGAZINA	3 COPE
L-20 - (3X2.5)F=25 PRIZE HOLLI KRYESOR	2 COPE
L-21 - (3X4)Φ=25 PRIZE DREJTORI,KONDITIONERI	5 COPE

-  PANEL ELEKTRIK METALIK
-  KUTI DERIVACIONI PT-2,5,7.
-  PRIZË ELEKTRIKE SHUKO 16A-250V
ME RRJET ELEKTRIK KESH-MGJ
-  LINJË ME KABELL ELEKTRIK NE DYSHEME
NGA PANELI ELEKTRIK PER PRIZAT
-  LINJË ME PERCJELLES ELEKTRIK NE TUB PLASTI NE
DYSHEME
-  LINJË ME PERCJELLES ELEKTRIK NE TUB PLASTI NE
TAVANE DHE MUR ANESOR
-  KABINET RRJETI PER SISTEMIN E INTERNETIT,AUDIO
MONITORIMIT NE KAMERA

SKEMA ELEKTRIKE E KASETES KE-1 MONTUAR NE HOLLIN E K.PARE

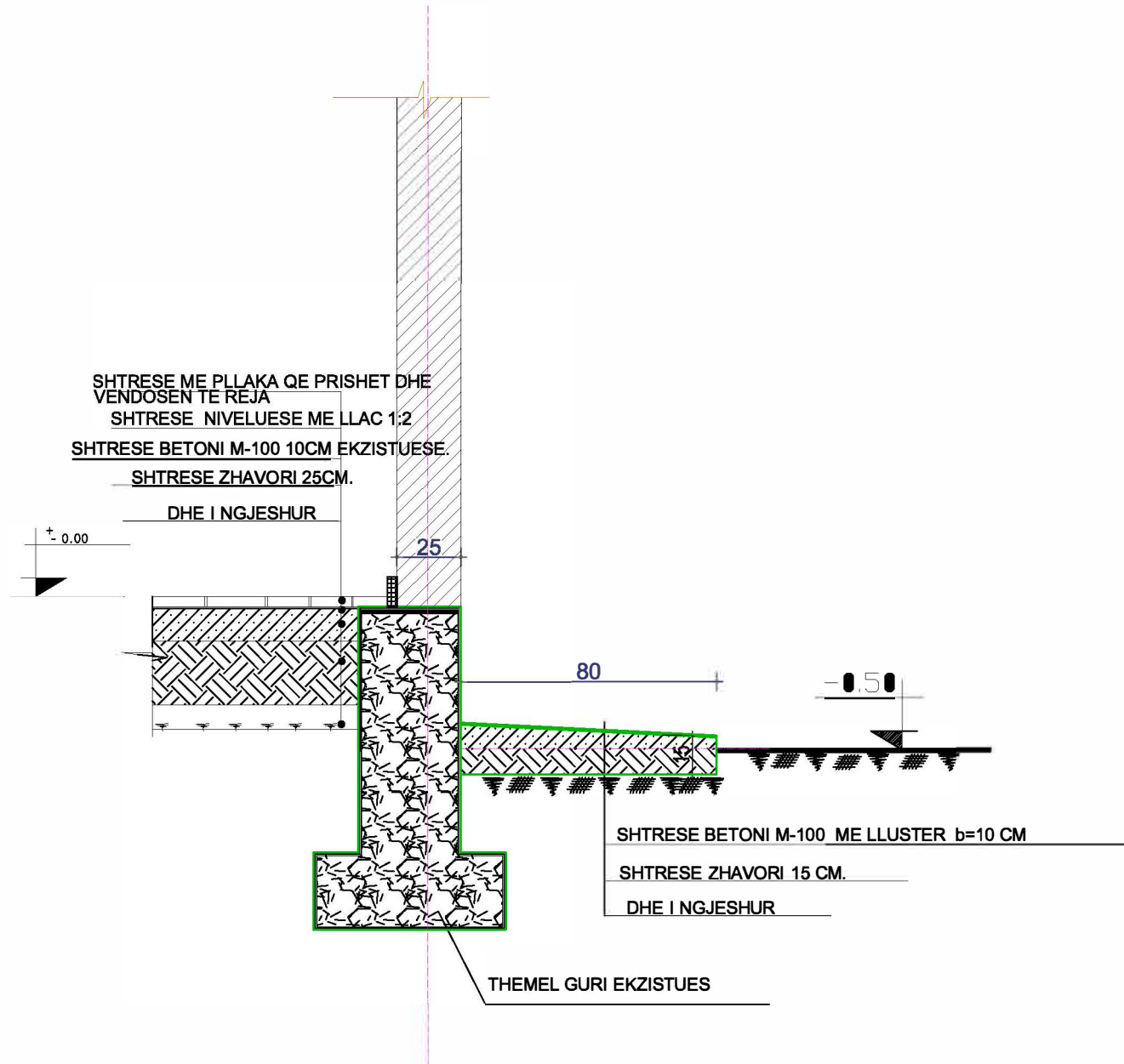


KASETE ELEKTRIK PLASTIK BRENDA MURI 64 (4X16) MODULE ME DERE TRANSPARENTE ME CELES,ME AKSESORE PER NULIN DHE TOKEZIMIN

		X	X	X	X	X	X	X	X	X	X	X	X	X	X	X	X	X	X	X	X
NR. LINJES	L-1	L-2	L-3	L-4	L-5	L-6	L-7	L-8	L-9	L-10	L-11	L-12	L-13	L-14	L-15	L-16	L-17	L-18	L-19	L-20	L-21
02 RRYMA AUTOMATIT (A)	10	10	10	10	10	10	10	16	16	16	16	20	20	20	20	20	20	16	20	16	20
03 NR. POLEVE	1P/M	1P/M	1P/M	1P/M	1P/M	1P/M	1P/M	1P/M	1P/M	1P/M	1P/M	2P/2M	2P/2M	2P/2M	2P/2M	1P/M	1P/M	1P/M	1P/M	1P/M	2P/2M
04 AFTESIA ÇKYÇESE (kA)	6-C	6-C	6-C	6-C	6-C	6-C	6-C	6-C	6-C	6-C	6-C	6-C	6-C	6-C	6-C	6-C	6-C	6-C	6-C	6-C	6-C
05 MARKA PERCJELLESIT	N	O	7	V	-	K	N	O	7	V	-	K	N	O	7	V	-	K	N	O	7
06 SEKSIONI mm²	2x1.5	3x1.5	2x1.5	2x1.5	3x1.5	2x1.5	2x1.5	3x2.5	3x2.5	3x2.5	3x2.5	3x4	3x4	3x4	3x4	3x4	3x4	3x2.5	3x4	3x2.5	-
07 MENYRA VENDOSJES	Φ=25	Φ=25	Φ=25	Φ=25	Φ=20	Φ=25	Φ=25	Φ=25	Φ=25	Φ=25	Φ=25	Φ=25	Φ=25	Φ=25	Φ=25	Φ=25	Φ=25	Φ=20	Φ=20	Φ=20	-
08 GJATESIA LINJES (ml)								9.8	16.8	12.6	8.2	16.8	14.4	11.6	17.6	8.4	16.6	10.4	6.2	12.6	-
09 FUQIA MAX.LINJES (KW)	1	0.8	1	1.2	1.1	1.1	0.6	1.5	1.5	1.5	1.5	2	1.5	2	1.5	1.5	2	2	1.8	1.6	-
10 FAZIMI	AOT	AOT	BOT	BOT	COT	COT	AOT	AOT	BOT	COT	AOT	BOT	COT	AOT	BOT	COT	AOT	BOT	COT	COT	-
DESTINACIONI	NDRICIM KLASA 7,8 12 COPE	NDRICIM KORIDORI HO: DJATHAS 15 COPE	NDRICIM KLASA 9,10 12 COPE	NDRICIM INFORMATIKE ,LABORATORI 15 COPE	NDRICIM BLOKU I BANJAVE 11 COPE	SALLA E MESUESVE ,KORIDORI 19 COPE	NDRICIM DREJTORI,SEKTARIA,HOLLI 6 COPE	PRIZE KLASA 7 4 COPE	PRIZE KLASA 8 4 COPE	PRIZE KLASA 9 4 COPE	PRIZE KLASA 10 4 COPE	PRIZA GRUPI 2,3,4,5 INFORMATIKE 8 COPE	PRIZA GRUPI 6,7,8 INFORMATIKE 6 COPE	PRIZA GRUPI 9,10,11,12 INFORMATIKE 8 COPE	PRIZA GRUPI 1,13,14 INFORMATIKE 5 COPE	PRIZE SALLA E MESUESVE 6 COPE	PRIZE LABORATORI 8 COPE	FURNIZIM AKSESOR 6 PRIZA NE KABINET RRJETI	PRIZE SEKRETARIA DREJTORIA 6 COPE	PRIZE KONDICIONERI DREJTORI 1 COPE	REZERVE NE PANEL

HOLLESI E SHITRESSES SE KATIT PERDHE

DHE E TROTUARIT



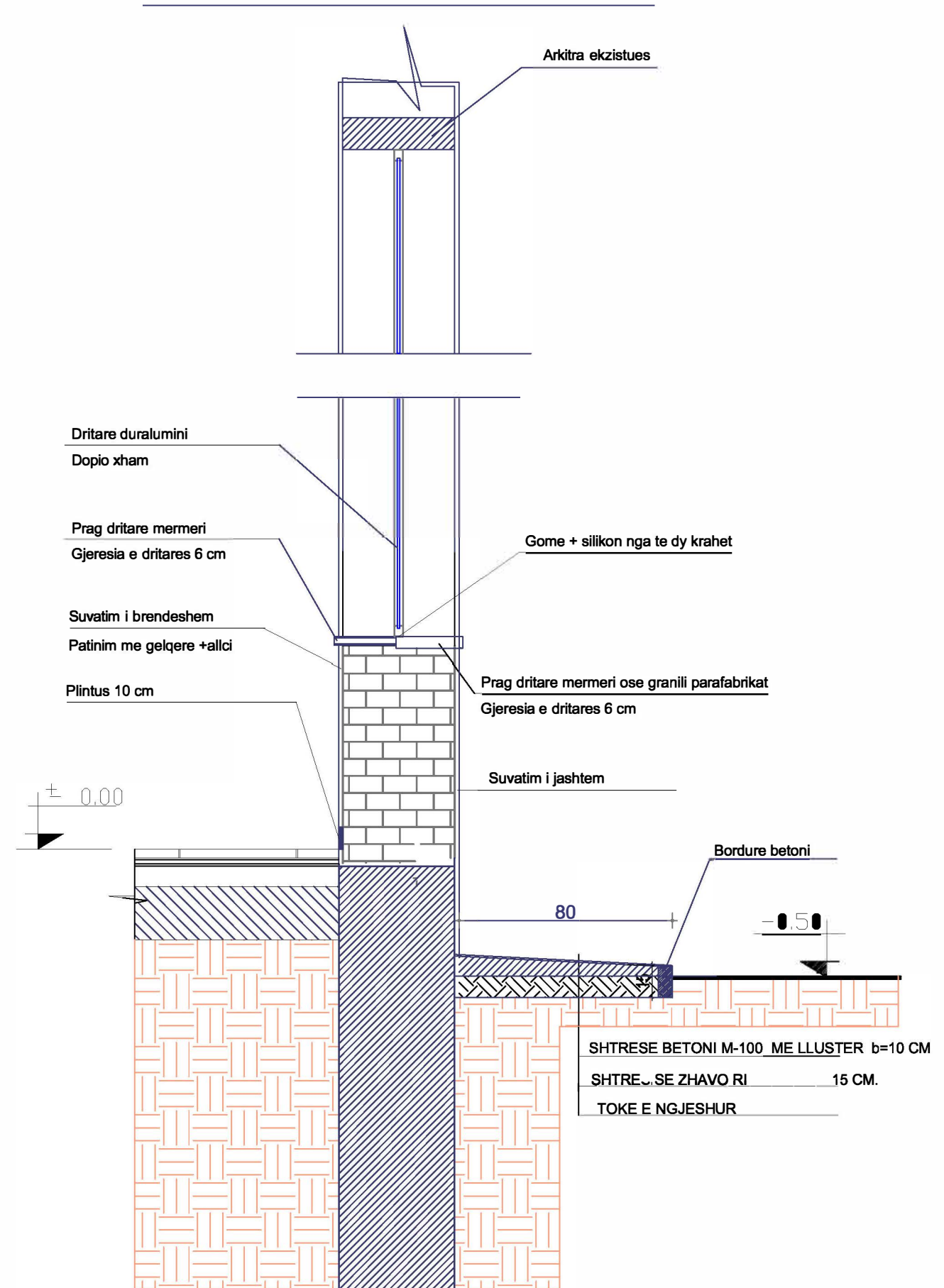
SHENIME TEKNIKE

1- Shtresat e pllakave te reja vendosen pasi te jete bere prishja e shtresave ekzistuese.

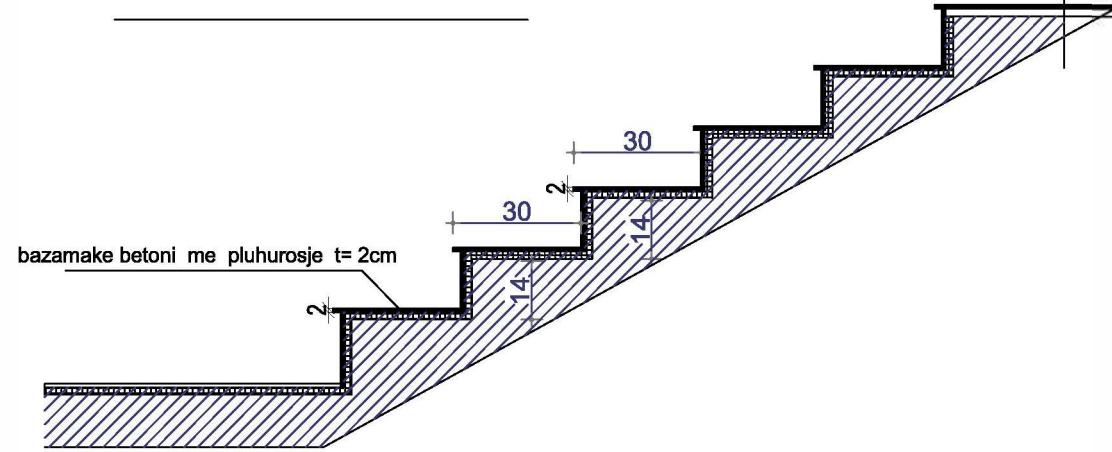
SHENIME TEKNIKE

- 1- Te behet mbushja me silikon e gjithe perimetrin te dritares qe zevendesohet .
2. Davancali i dritares do te jete mermer i zakonshem

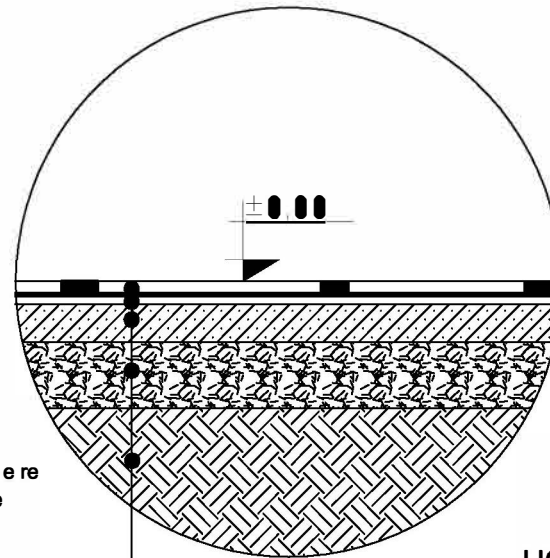
DETAJE PRAGJE PER DRITAREN



SHKALLET E JASHTME

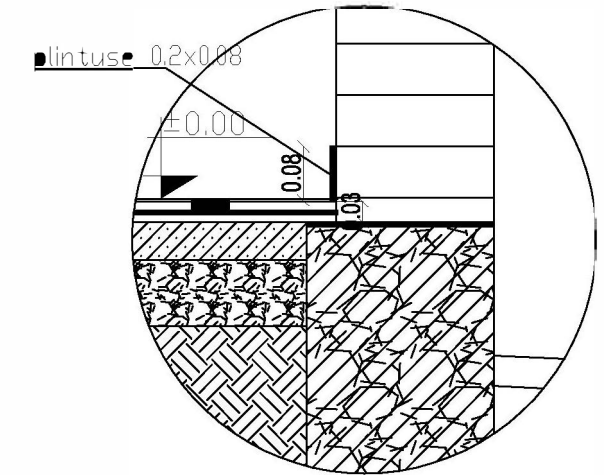


DETAJE SHTRRESASH

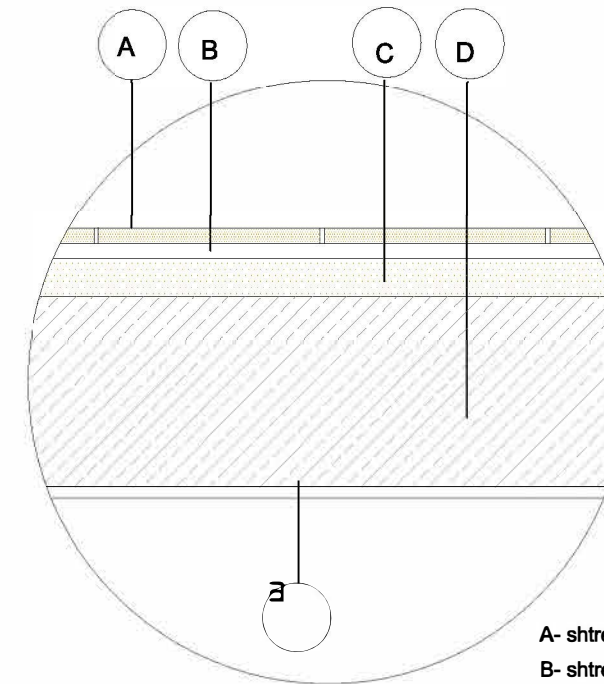


shtrese me pllaka gres 2 cm 30x30 e re
shtrese llac cemento 1/2 - 2cm e re
beton M-100 , b= 10 cm ekzistues
shtrese zhavori ekzistuese
shtrese dheu i ngjeshur

DETAJE SHTRRESASH

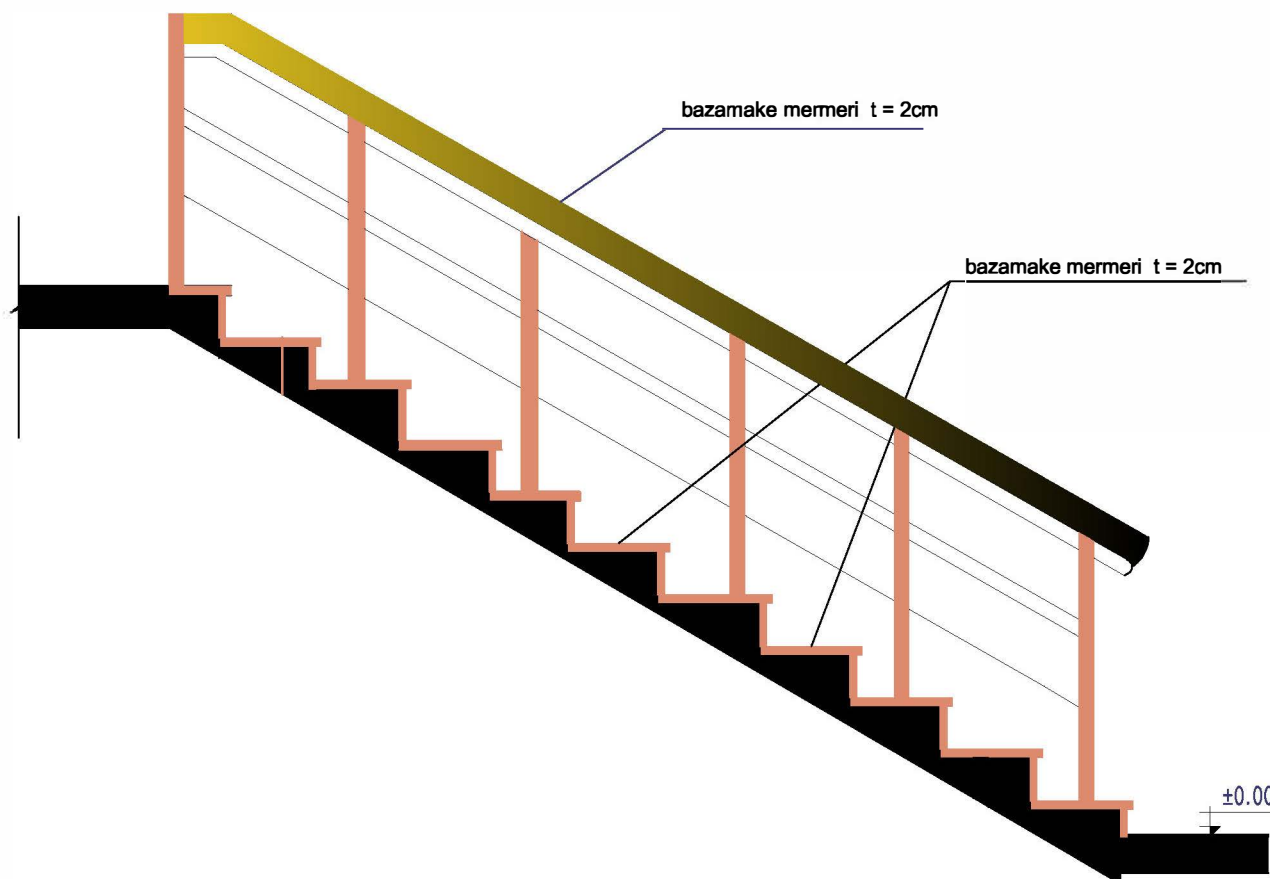


HOLLESI E SHTRSES SE NDERKATIT



A- shtrese pllaka e re
B- shtrese rrafshuese ll,cimento 2 cm.
C- shtrese rere ekzistuese 5 cm.
D- solete me traveta 25 cm
E- suva qe do te meremetohet pjeserisht 1.5 cm

SHKALLET E BRENDESHME



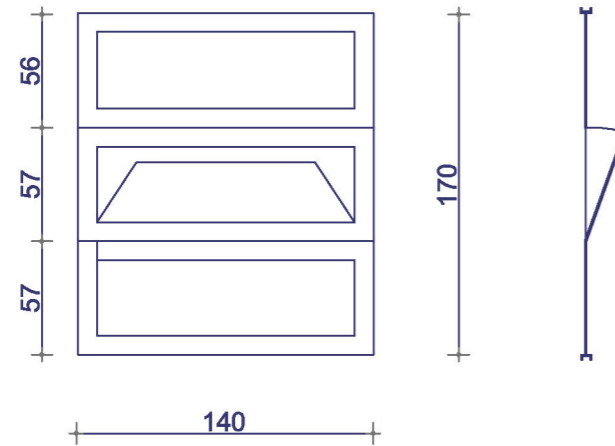
SHENIME TEKNIKE

- 1- Dyert dhe dritaret per ambientet e katit per dhe dhe te pare do te vendosen duralumini.
- 2- Shtresat e pllakave do te prishen dhe do te shtrohen pllaka te reja ngjyre bezhe.
- 3- Suvatimi i tavaneve do te perseritet ne masen 60 % per çdo klase
- 4- Do te behet meremetimi i murit te tulles se demtuar nga jashte sipas kushteve teknike per rikonstruksionin.
- 5- Suvatimet e mureve do te behen komplet.
- 6- Ne korridoret do te behet prishja e patinimit dhe lyerja me boje vaji dhe do te suvatohen pjeset e demtuara .
- 7- Per te gjithë ambientet e katit per dhe do te prishet patinimi i derrasave dhe do te behet i ri 2. x 1.1m
- 8- Oxhaqet do te pastrohen dhe meremetohen .
- 9- Do te vendosen pajisjet elektrike dhe tel elektrik ne te gjithë ambientet e katit per dhe dhe te pare.
- 10- Ballkoni i katit te dyte do te shtrohet me pllaka dhe do te mbulohet me çati .
- 11- Shkolla do te suvatohet komplet nga jashte mbasi te jete ndertuar çatija .
- 12- Lyerja do te behet per te dy katet brenda dhe jashte objektit me 2 duar boje bezhe.
- 13- Punimet e rifinitures per te dy katet do te realizohen pasi te jene kryer punimet ne konstruksion, çati dhe perforcimet e mureve dhe te themeleve.
- 14- Neqoftese nenshtresa e pllakave eshte e demtuar ajo do te realizohet e re me shtrese niveluese.
- 15- Shkallet e shkollës per te dy katet do te vishen me mermer se bashku me korimanot

DRITARE KLASË DHE KORIDORE

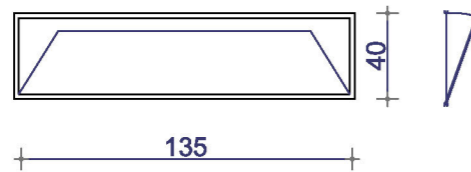
(42 COPE)

D-1 140 x 170



DRITARE KAFAZ SHKALLE

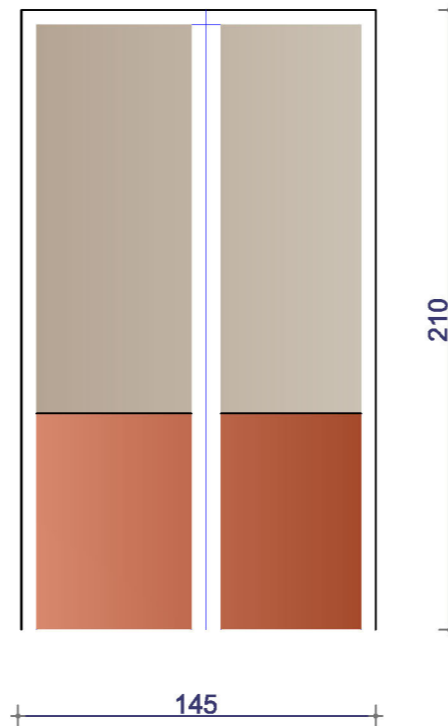
D-2 40 x 135 (4 COPE)



dere duralumini 1/2 xham per katin e pare

P-2 145 x 210

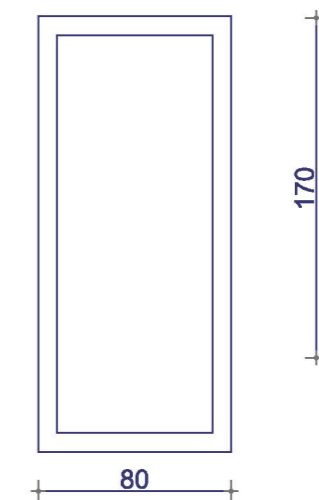
(1 COPE)



DERE BANJE DURALUMINI

(4 COPE)

P-3 80 x 200



SHENIME TEKNIKE

- 1- Dyert dhe dritaret do te realizohen sipas shenimeve ne projekt .
- 2- Davancalet e dritareve do te realizohen me mermer me kanal kullues nga jashte .
- 3- Ngjyra e duraluminit do te jete kafe.
- 4- Dera e jashtme e shkolles do te jete dy kanateshe.
- 5- Dyert e brendeshme do te jene druri tamburato.
- 6- Dyert e banjove do te jene duralumin i plote.
- 7- Elementet vertikale te fiksohen me kujdes.