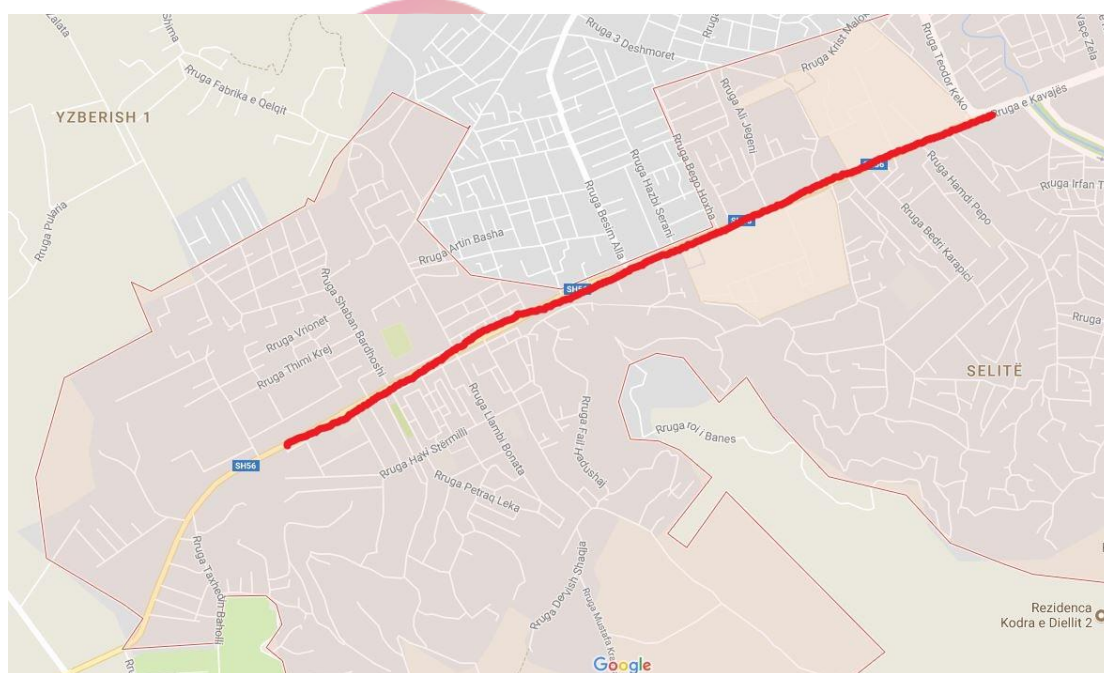
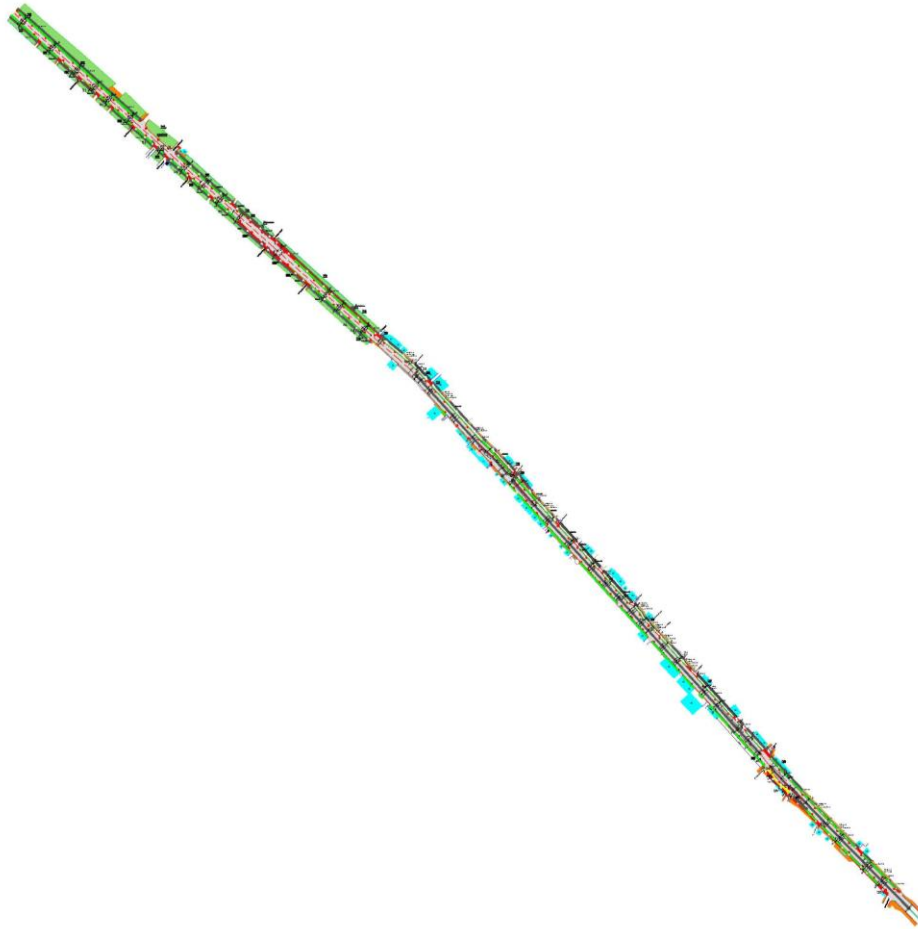


RELACION TEKNIK

OBJEKTI: REHABILITIMI I AKSIT "MBIKALIM - KOMBINAT"





 **Albania**
Planimetri e pergjithshme

VLERA E PREVENTIVIT _____
Rruga ka nje gjatesi rreth 2310ml









foto të gjëndjes ekzistuese

Nderhyrjet ne kete segment te rruges fillojn nga Ura Teknologjike deri ne Kombinat .

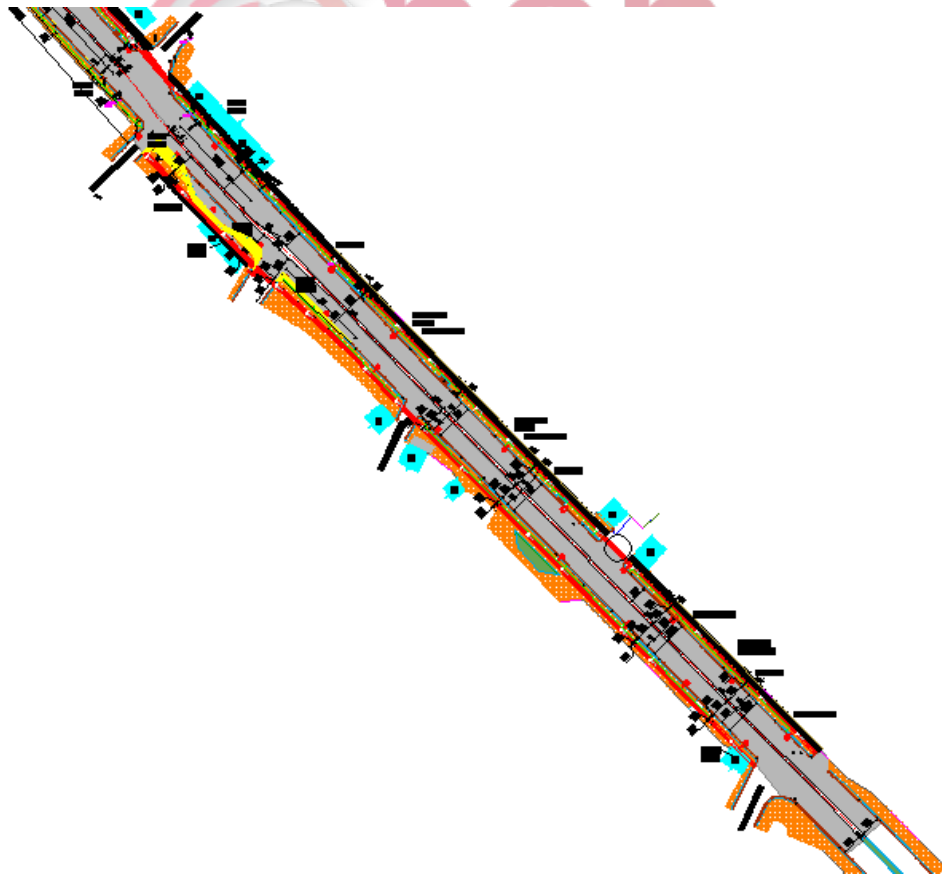
Nderhyrja ne kete segment do te behte ne trotuaret perkates si dhe ne rruge.
Karexhatat ne te dy anet janë me trotuar ekzistues për kalimin e kembesoreve .

Per realizimin e projektit eshte menduar qe te trajtohet e ndare ne 3 segmente:

Segmenti i pare:

1. Ura Teknologjike – Rruga 3 Deshmoret.
2. Rruga 3 Deshmoret - Rruga Thoma Koxhaj.
3. Rruga Thoma Koxhaj – Kombinat.

1. Ura Teknologjike – Rruga 3 Deshmoret.



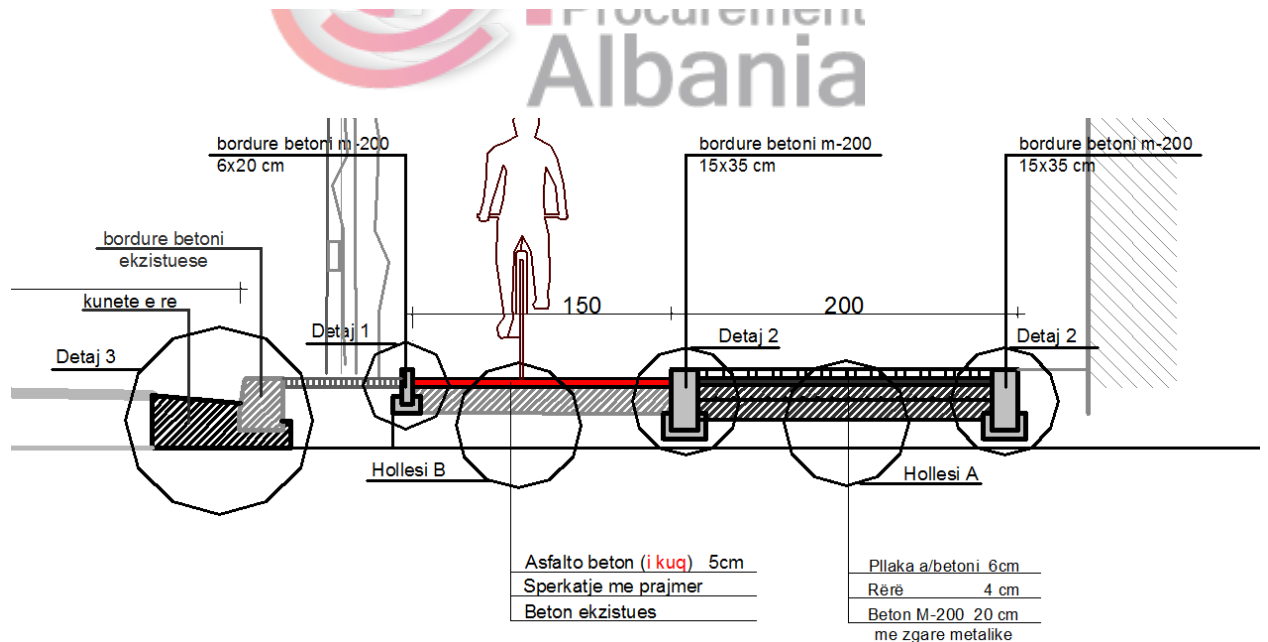
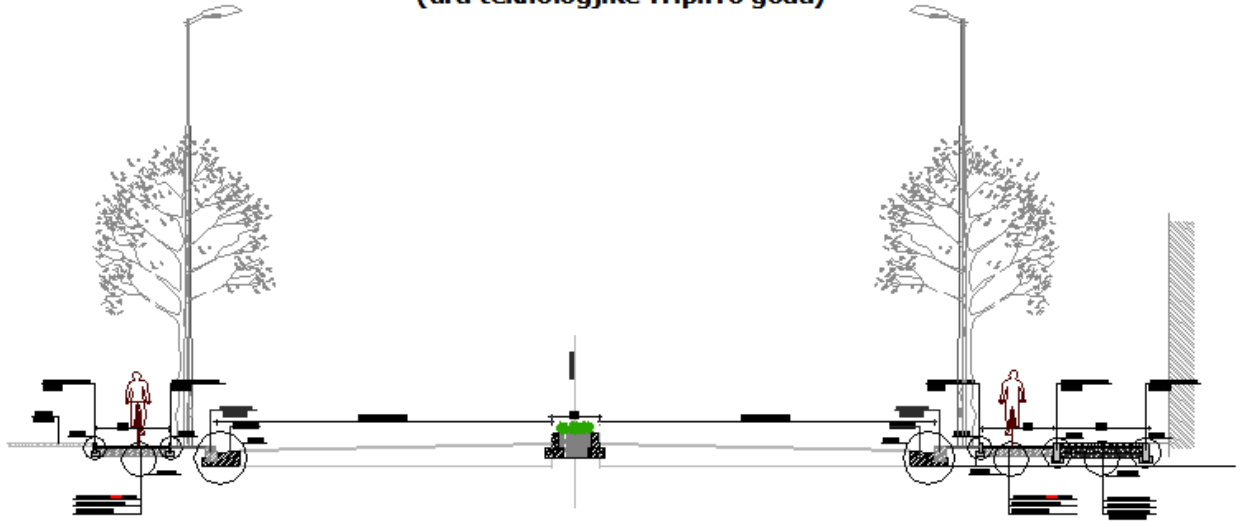
Korsia e biçikletave do të kalojë në te dyja anet e rruges ne trotuar.
Ne kete segment do te kete objekte qe preken nga korsia e bicikletes.

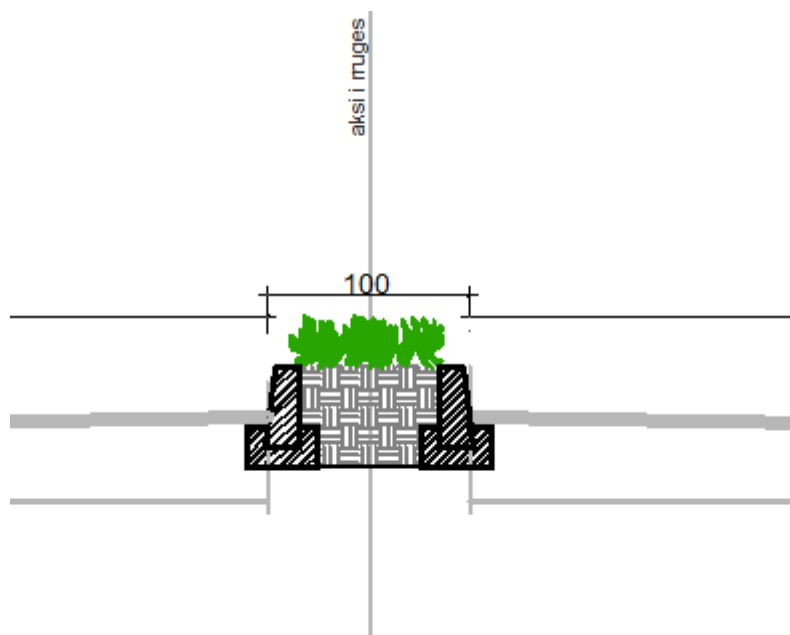
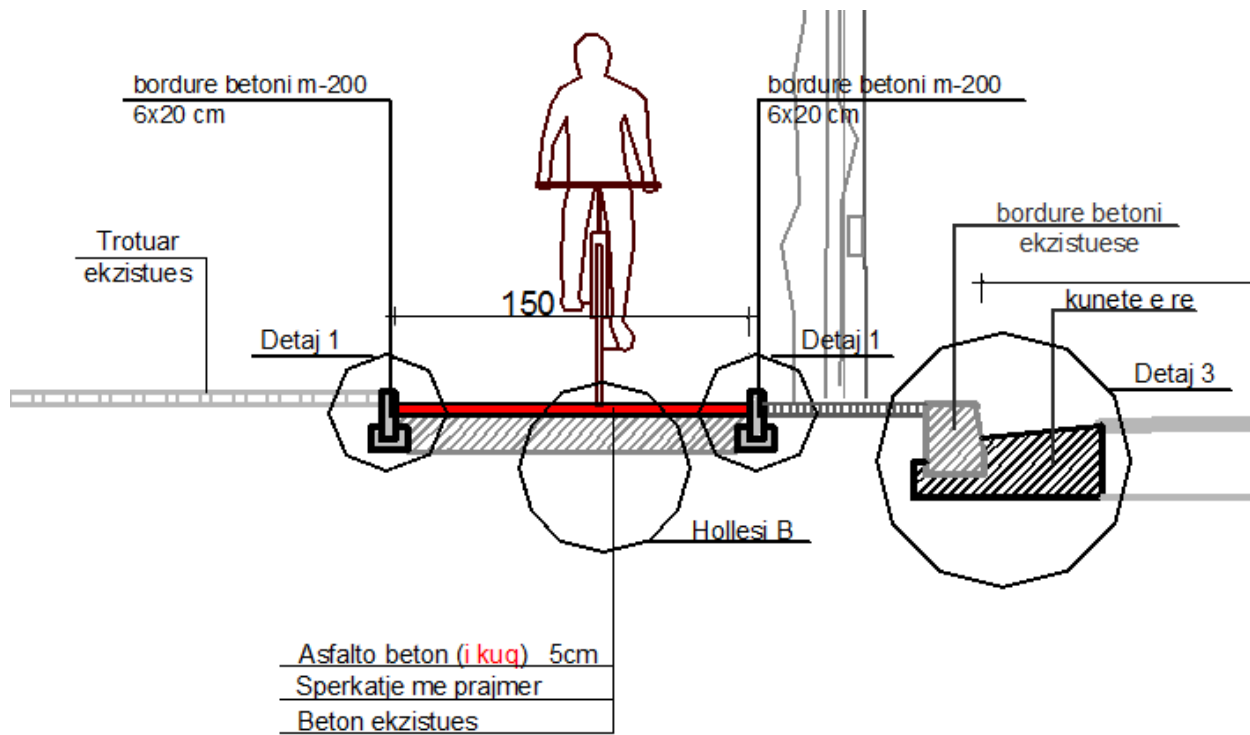
Ne anen e djathte te rruges pas korsise se bicikletes eshte parashikuar prishje muresh dhe riberje si dhe shtohet trotuar i ri 2m.

Ne anen e majte te rruges tek kthesa e rruges Sabaudin Gabrani do te kete prishje te trotuarit.

Pergjate ketij segmenti do te kete dhe trafik ndares 1m.

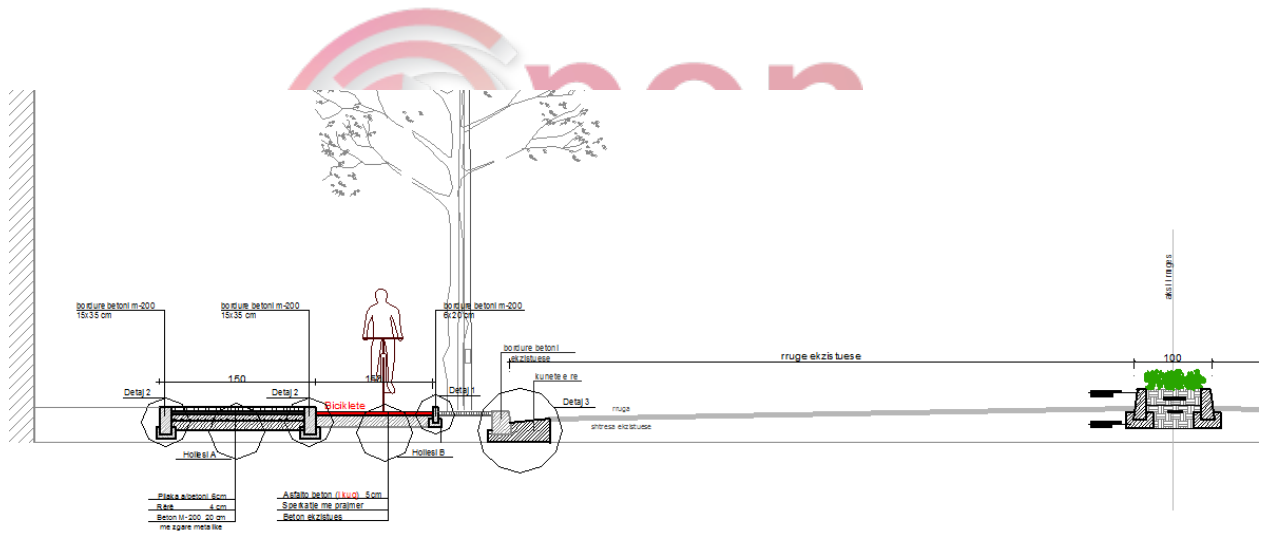
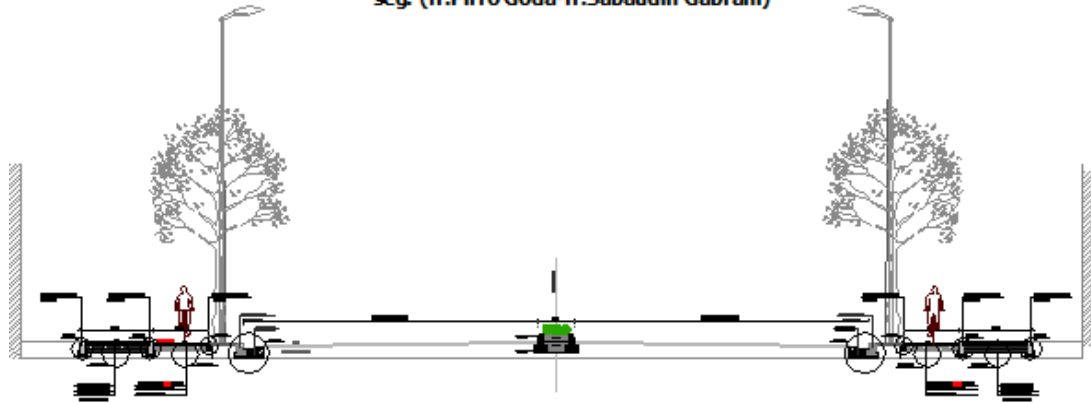
PRERJA 1-1
rr. e kavajes segmenti
(ura teknologjike-rr.pirro goda)

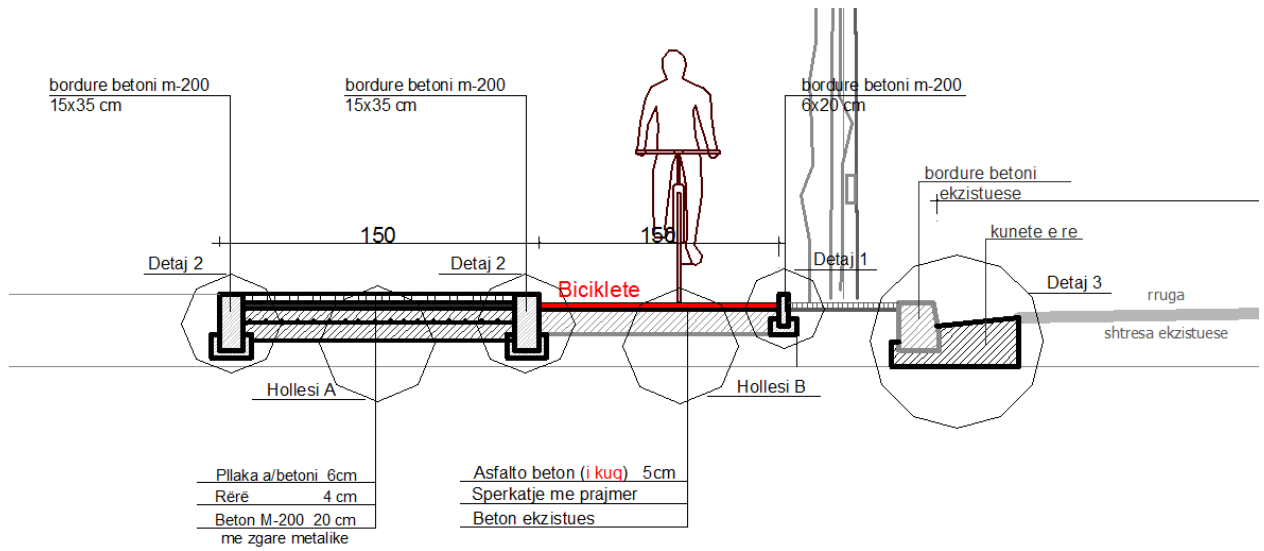




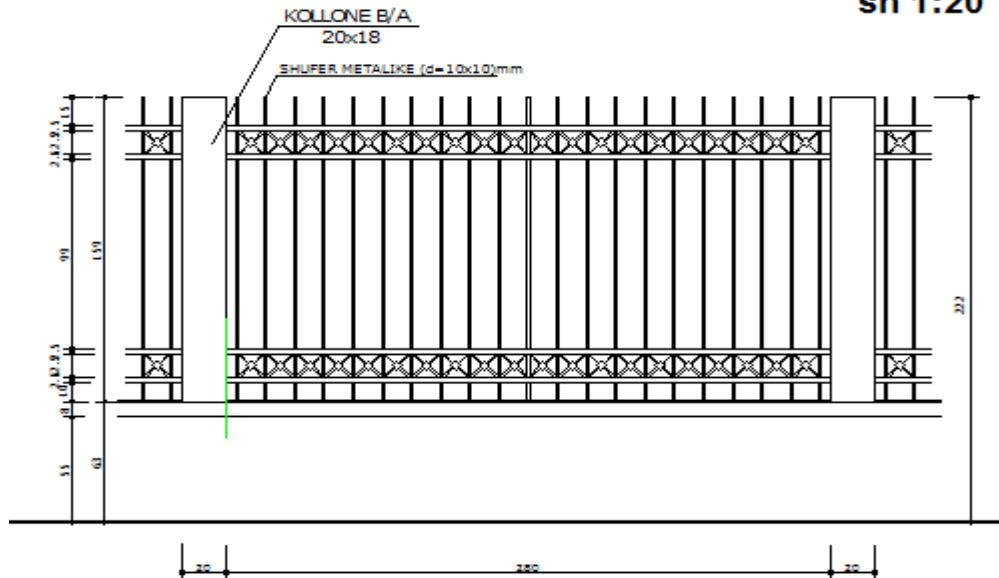
Fq.8

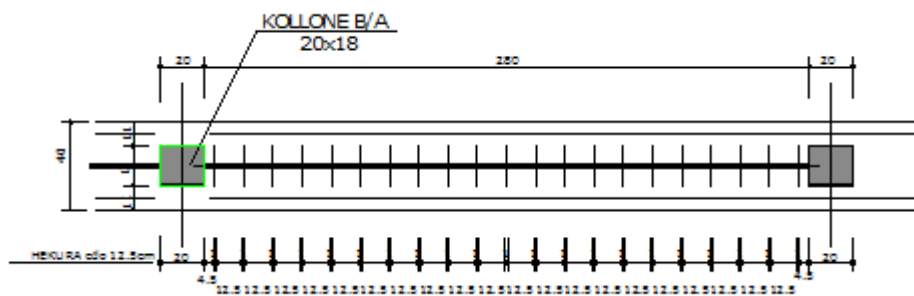
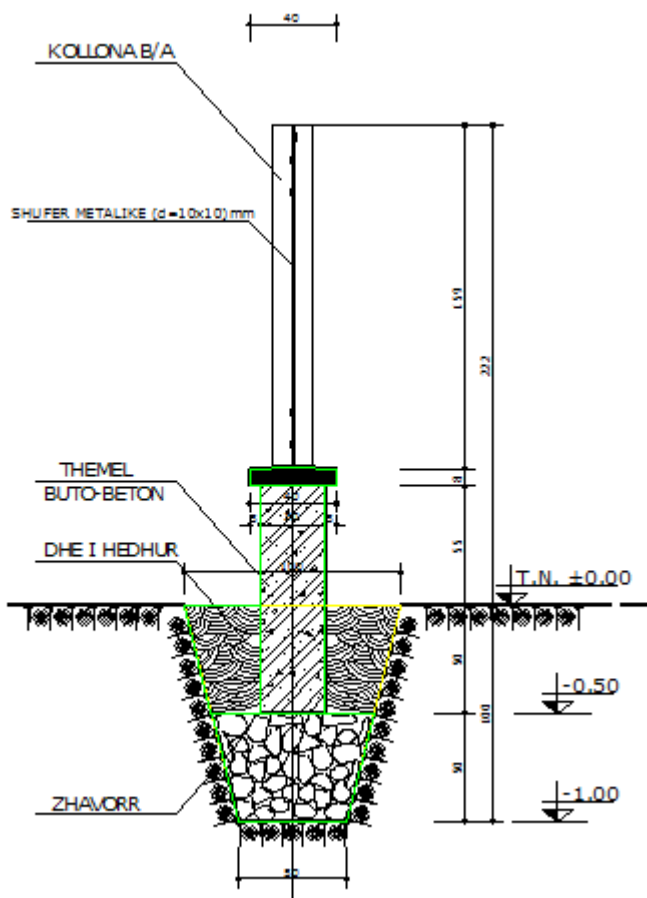
PRERJA 2-2
rr. e kavajes
seg. (rr.Pirro Goda-rr.Sabaudin Gabrani)





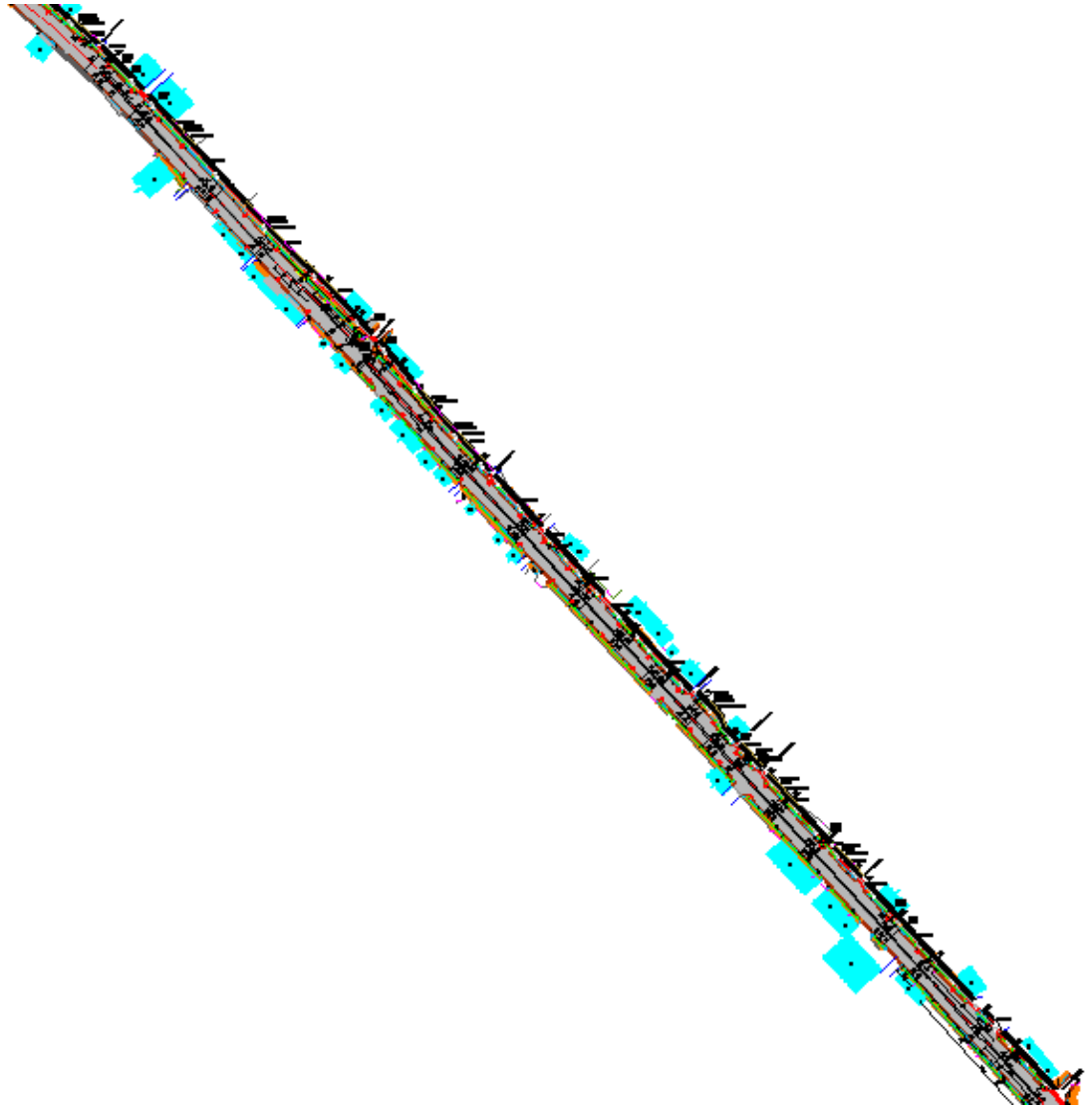
DETAJ I MURIT RRETHUES
sh 1:20





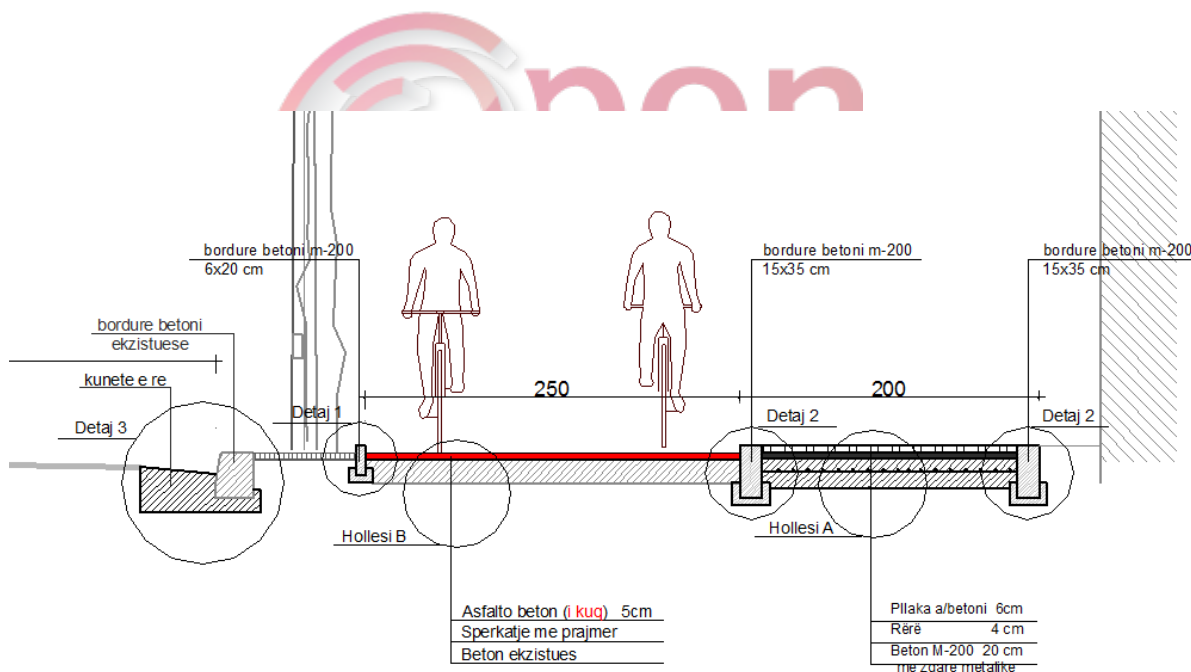
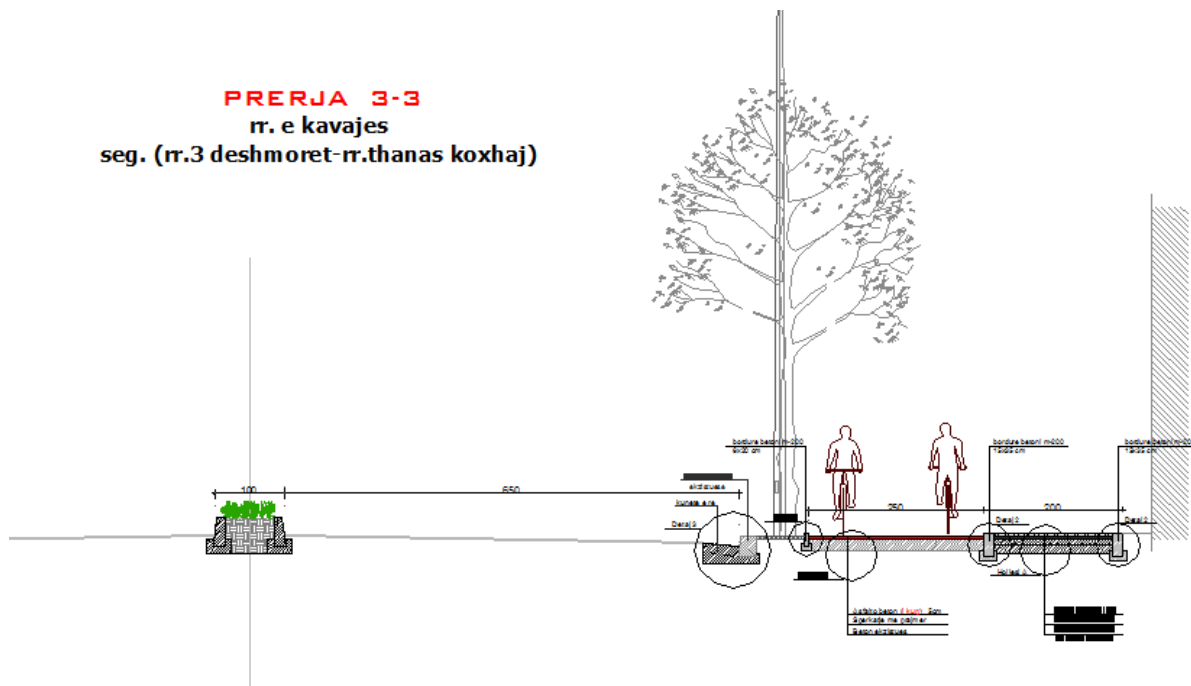
Muri rethues qe do te perdoret ne pjeset e nderhyrjes do te jete me kangjella si me siper.

2. Rruga 3 Deshmoret - Rruga Thoma Koxhaj.

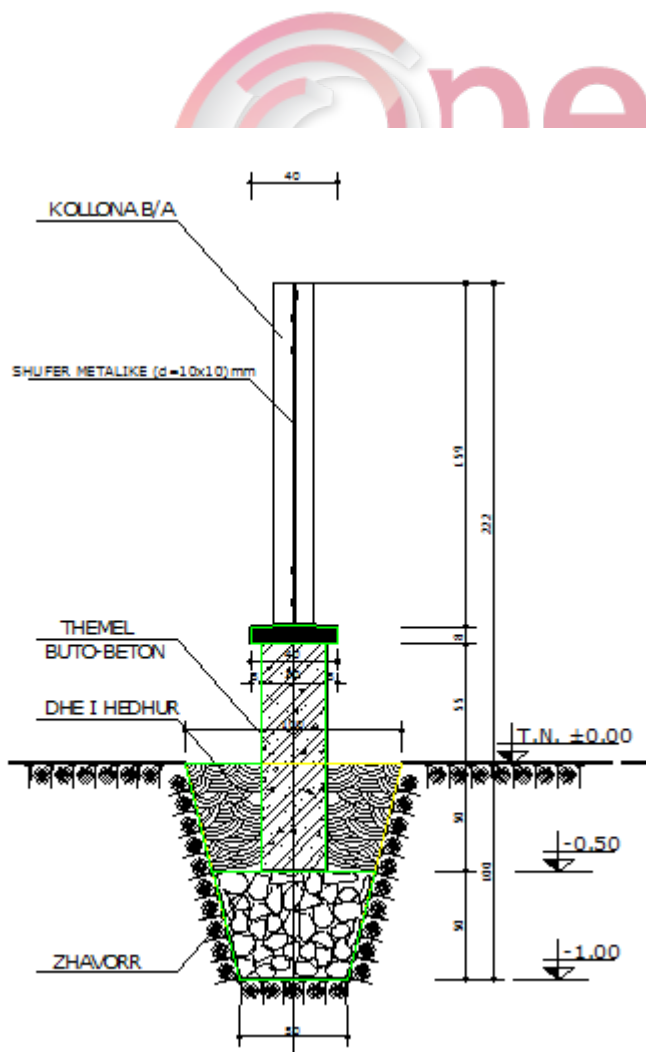
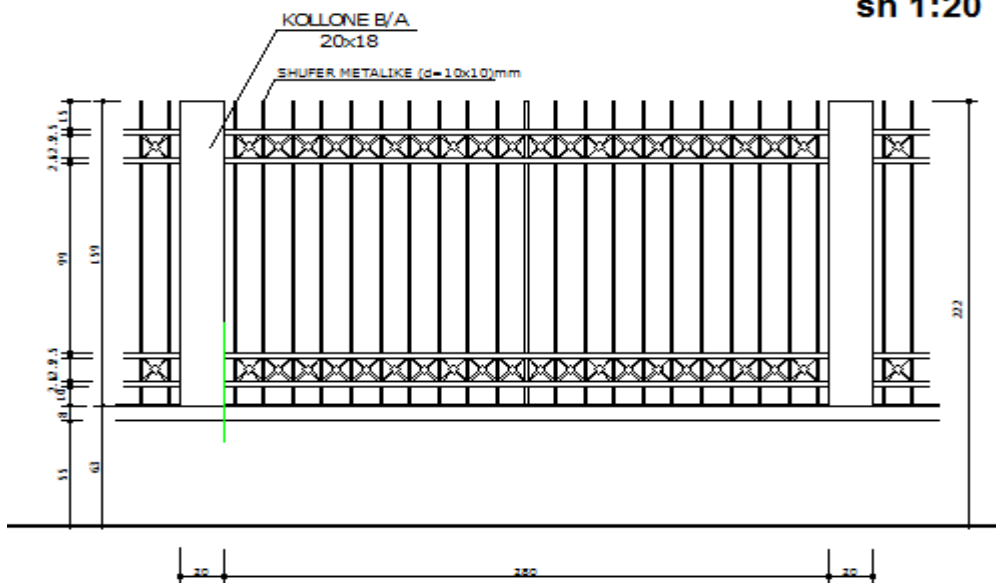


Korsia e biçikletave do të kalojë ne anen e djathte te rruges ne trotuar.
Ne kete segment do te kete objekte qe preken nga korsia e bicikletes.
Ne anen e djathte te rruges pas korsise se bicikletes eshte parashikuar prishje muresh dhe riberje si dhe shtohet trotuar i ri 2.5m.
Pergjate ketij segmenti do te kete dhe trafik ndares 1m.

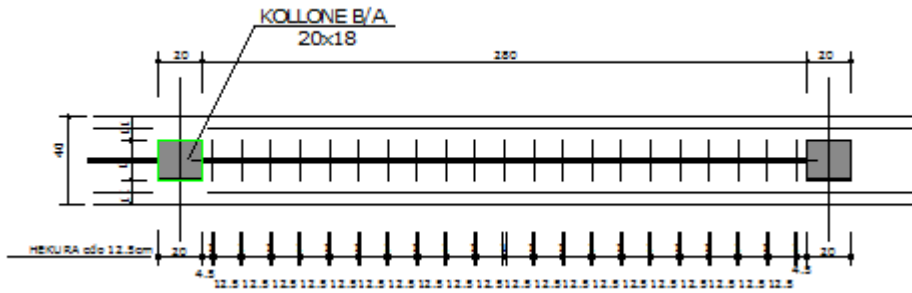
PRERJA 3-3
 rr. e kavajes
 seg. (rr.3 deshmoret-rr.thanas koxhaj)



DETAJ I MURIT RRETHUES
sh 1:20

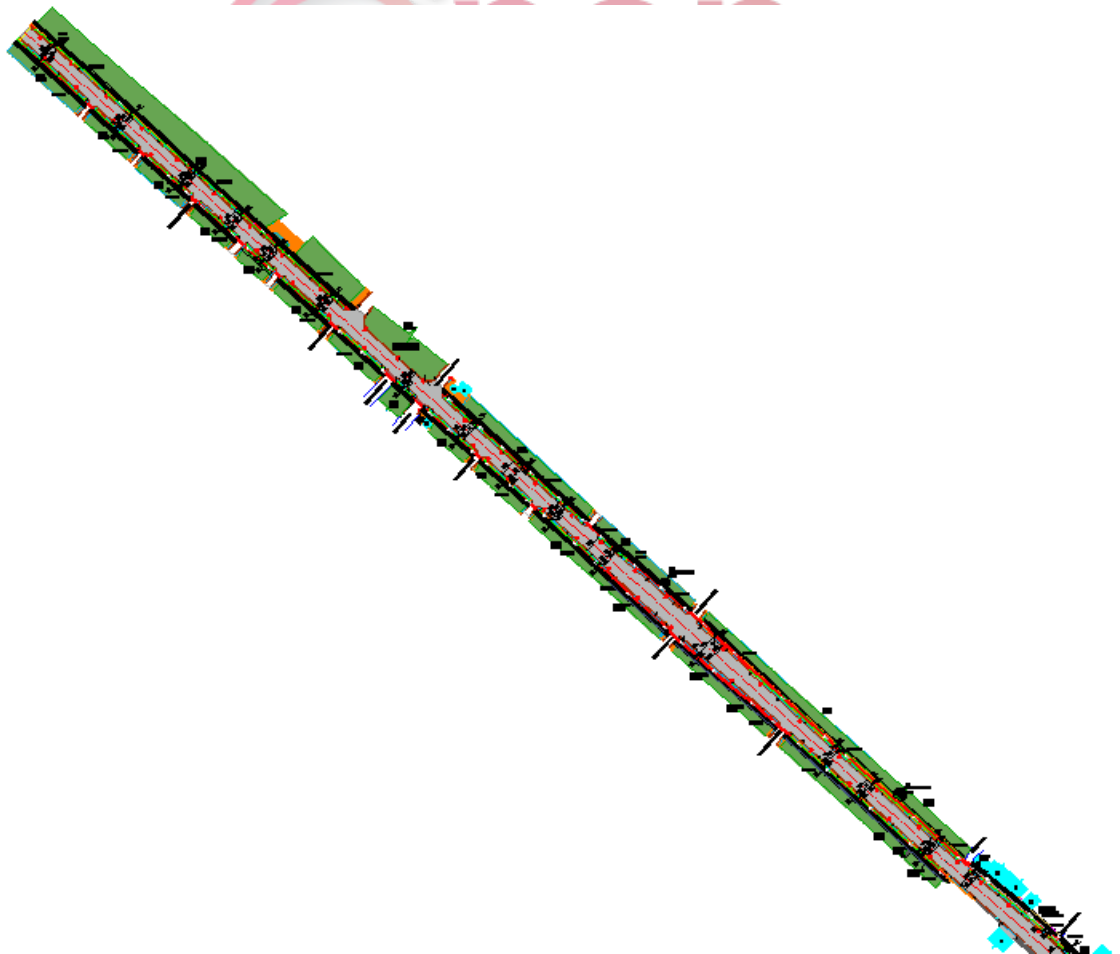


Fq.14

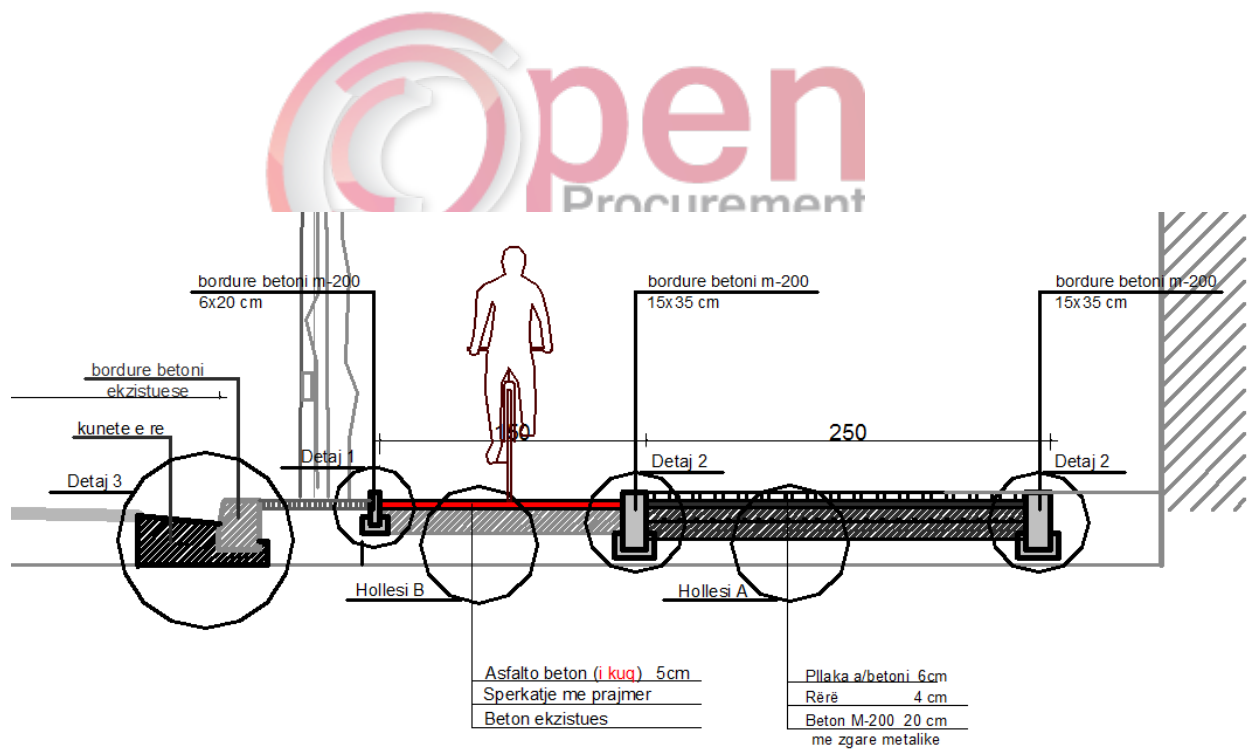
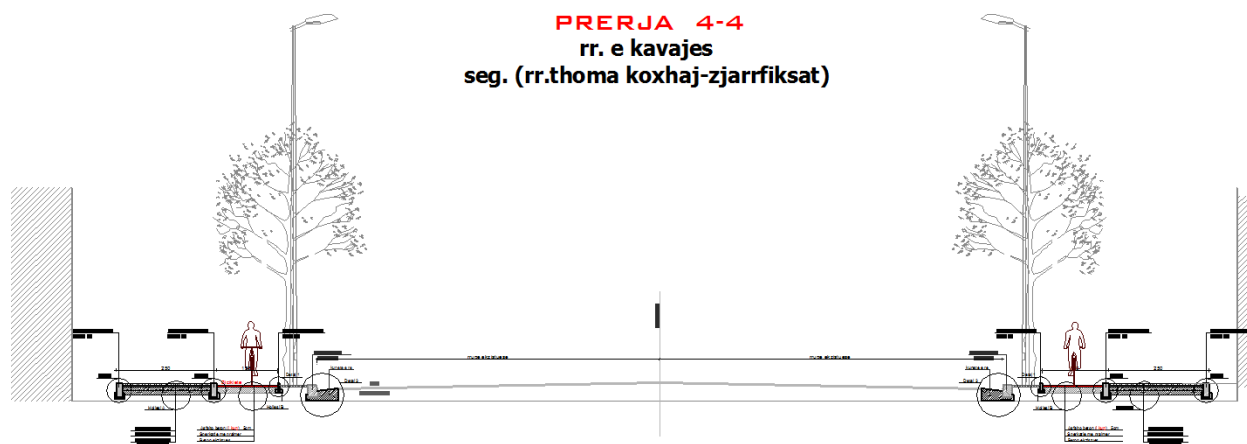


Muri rethues qe do te perdoret ne pjeset e nderhyrjes do te jete me kangjella si me siper.

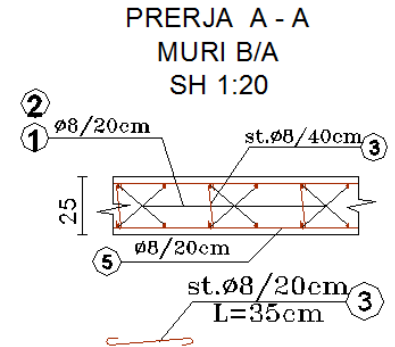
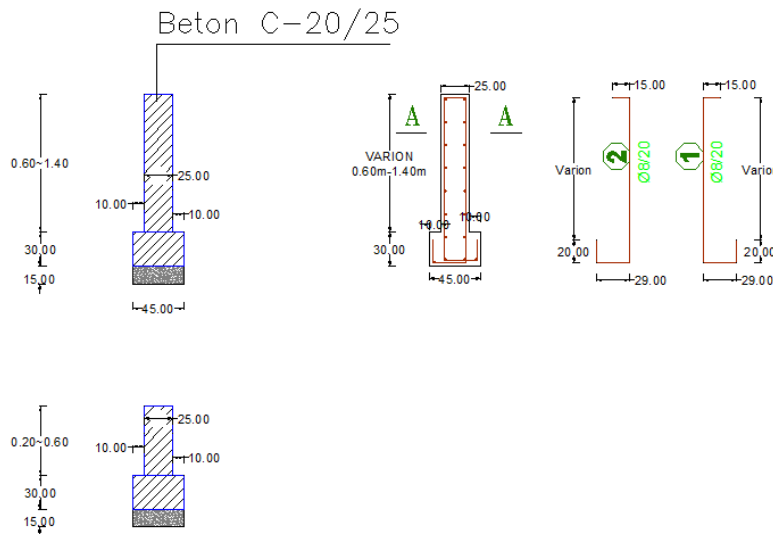
3. Rruga Thoma Koxhaj – Kombinat.



Korsia e biçikletave do të kalojë në të dyja anët e rrugës në trotuar.
 Në këtë segment të dyja anët do të kenë lulishte që preken nga korsia e biçikletës e cila do të spostohet, si dhe shtohet trotuar i ri 2.5m.
 Tek gjelberimet është përdorur dhe një mur mbajtës.
 Përgjatë këtij segmenti nuk do të ketë trafik ndares .



DETAJI I ARMIMI I MURIT B/A (t=25cm) H =0.60 ~ 1.40m



Shtresat qe do te perdoren ne gjithe gjatesine

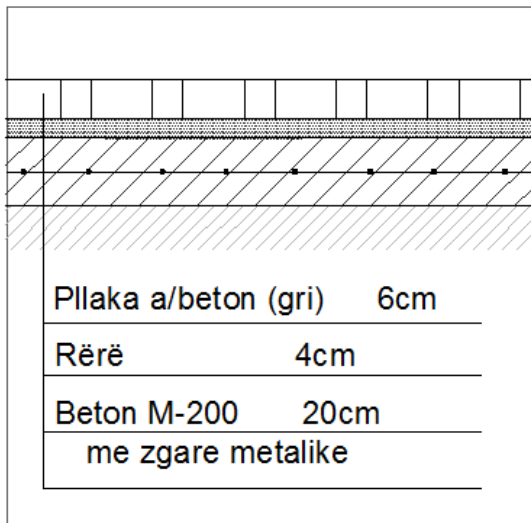
Shtresat e korsis se bicikletes do te jene keto:

1. Asfalto beton (i kuq) t=5cm
2. Sperkatje me prajmer
3. Beton ekzistues

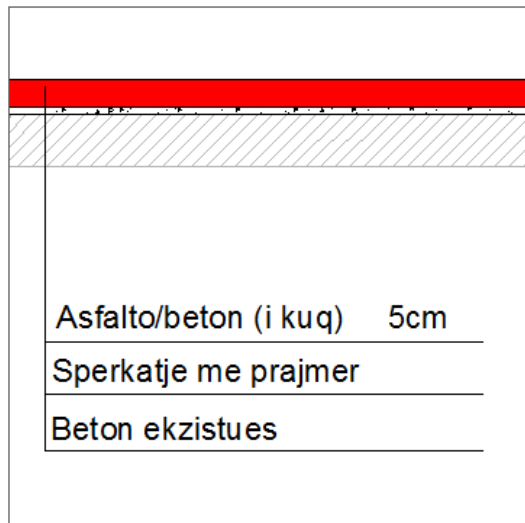
Shtresat e trotuarit te ri do te jene keto:

- | | |
|----------------------------------|--------|
| 1. Pllaka betoni | t=4cm |
| 2. Rere | t=4cm |
| 3. Beton M-200 me zgare metalike | t=20cm |

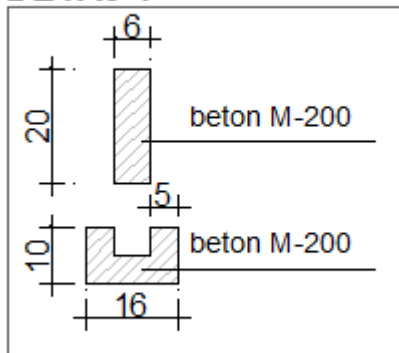
HOLLESI A



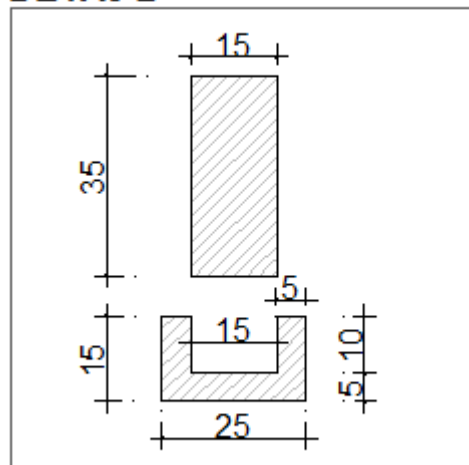
HOLLESI B



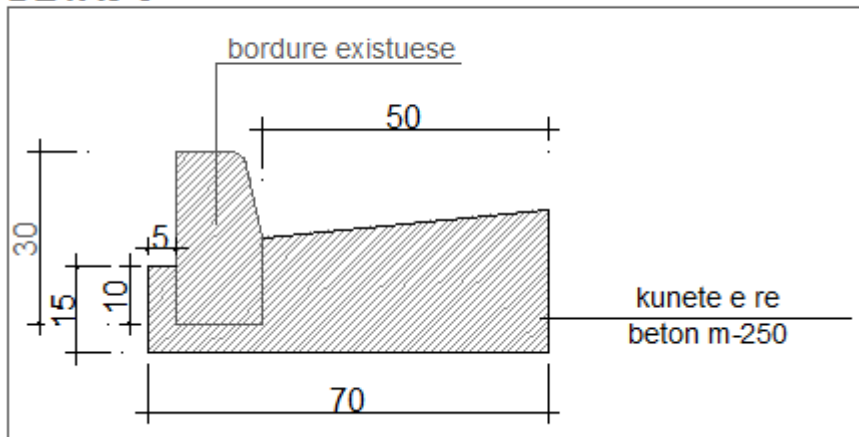
DETAJ 1



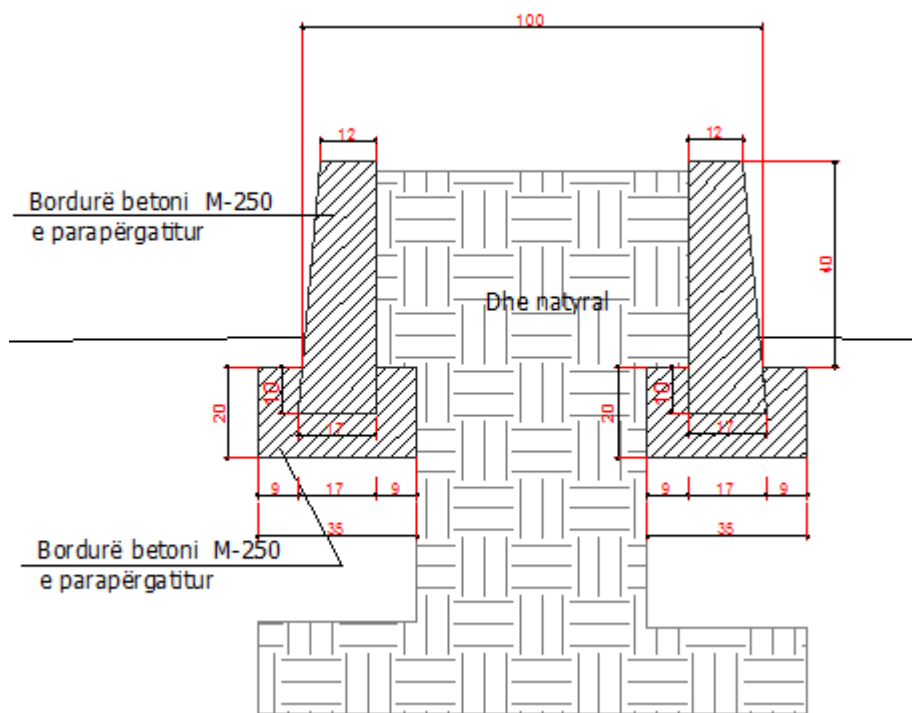
DETAJ 2



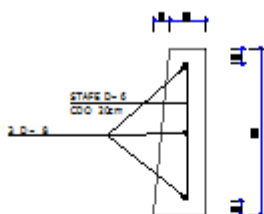
DETAJ 3



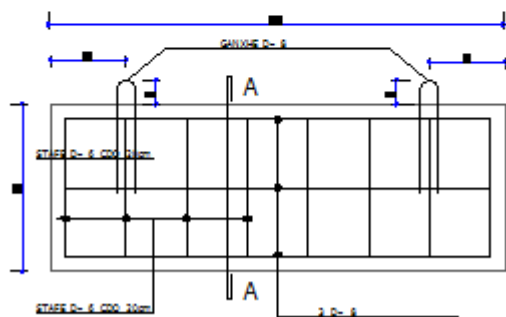
Detaji i trafik ndaresit

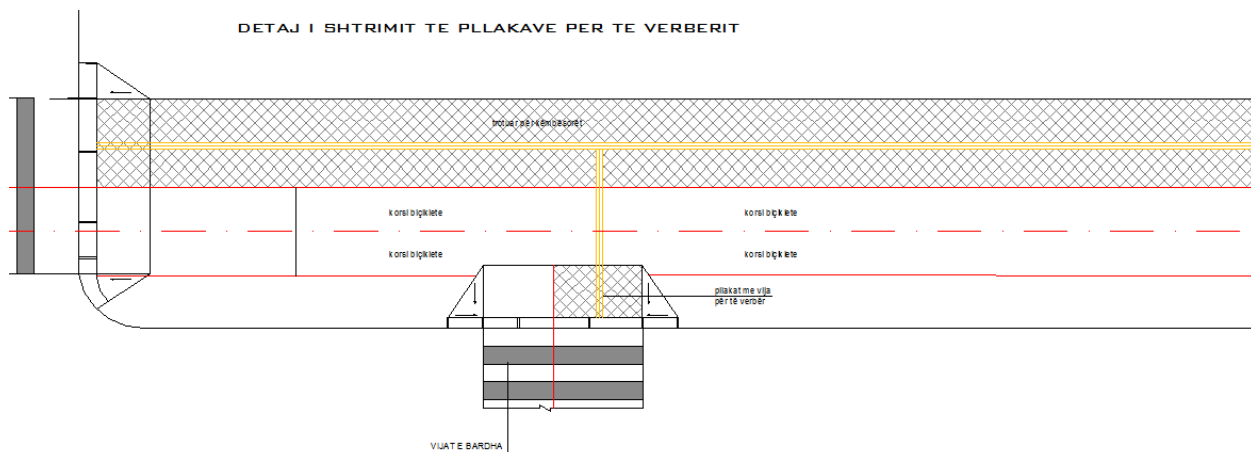


PRERJA E MURIT

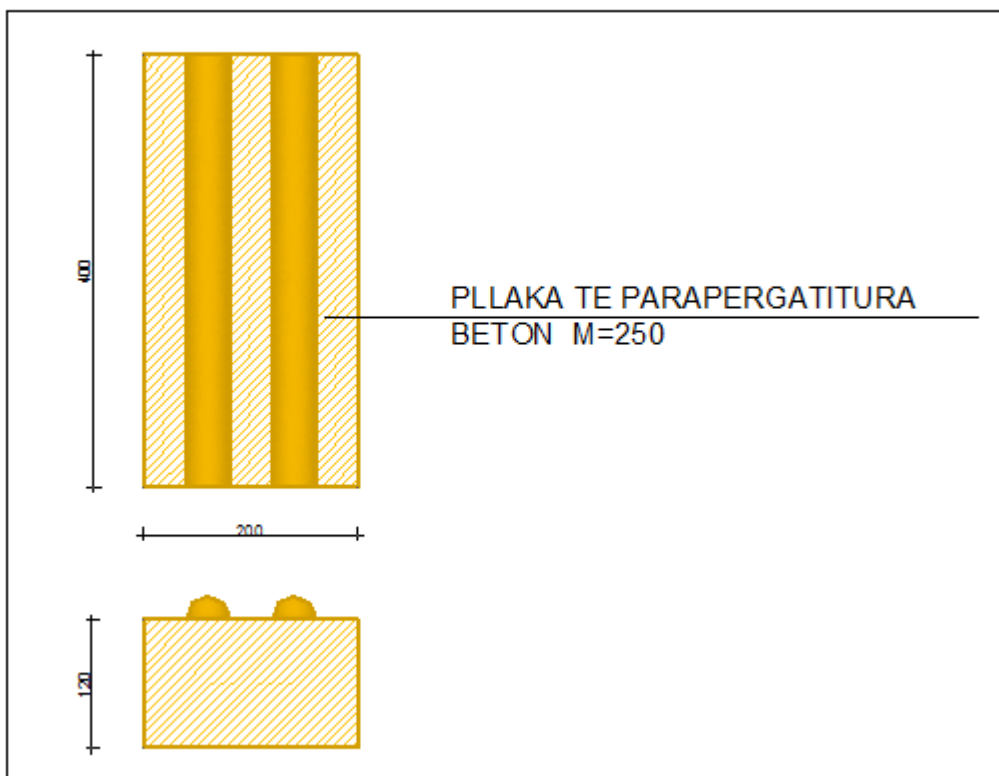


ARMIMI I BORDURES

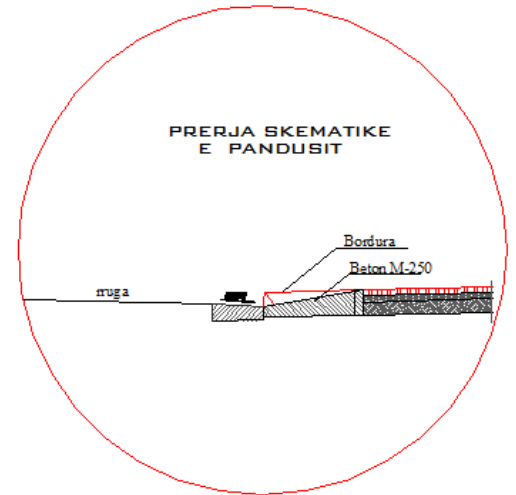
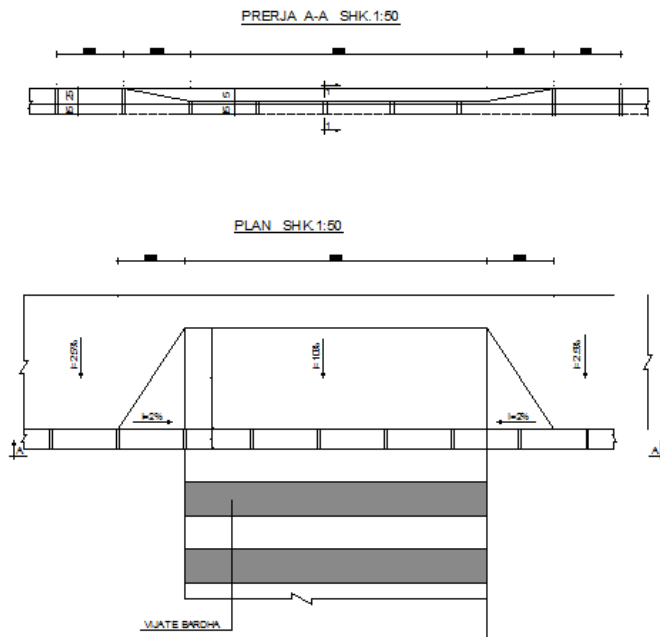




detaj i pllakës



DETAJI PANDUSIT



Hartoi
Ing.Erli Veizi

Kontrolloi
Ing.Muhamet Kruja
Përgjegjës i Sektorit të Projektimit
Drejtoria e Planifikimit Te Territorit