



REPUBLIKA E SHQIPERISE  
BASHKIA TROPOJE

# RIKONSTRUKSIONI I SHKOLLES SE MESME "OSO DAUTI" LLUGAJ



REPUBLIKA E SHQIPERISE

BASHKIA TROPOJE

*Projekti Arkitektonik*




*RIKONSTRUKSION I SHKOLLES SE MESME*

*“OSO DAUTI”, LLUGAJ*

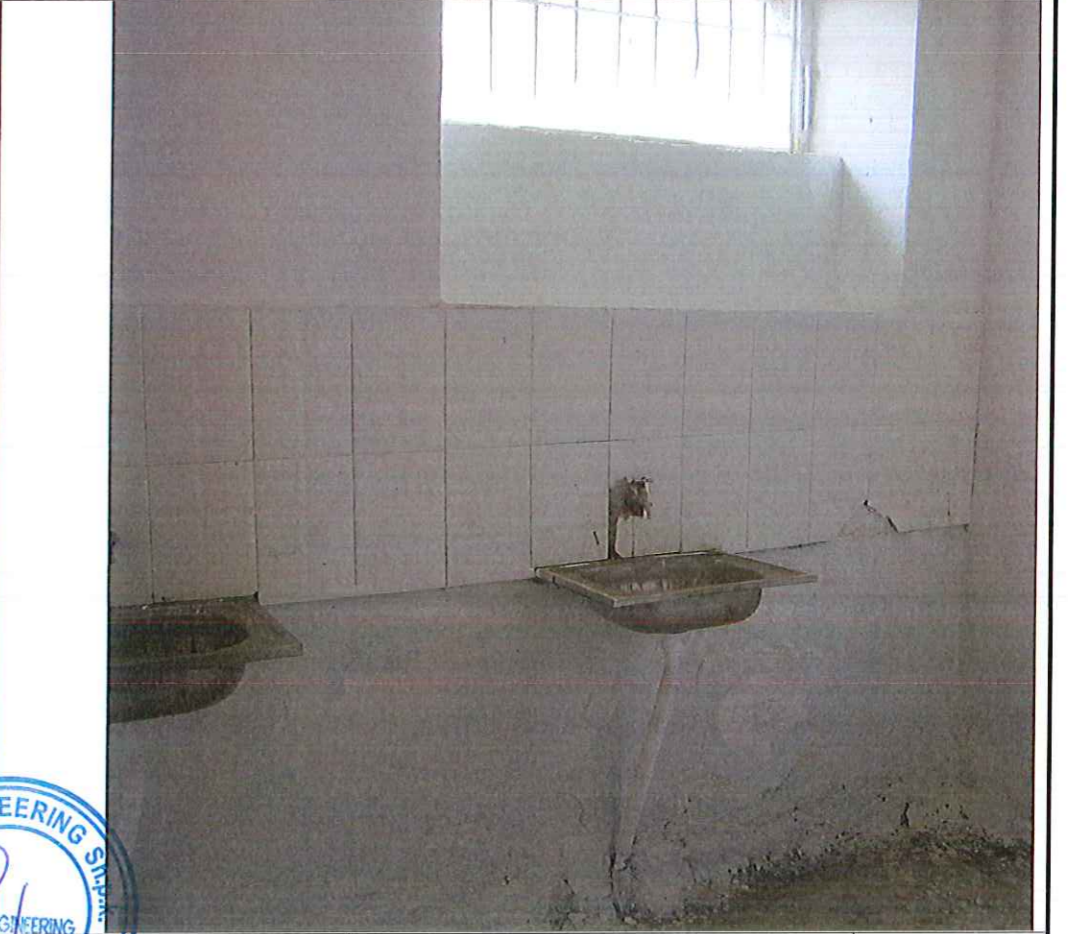
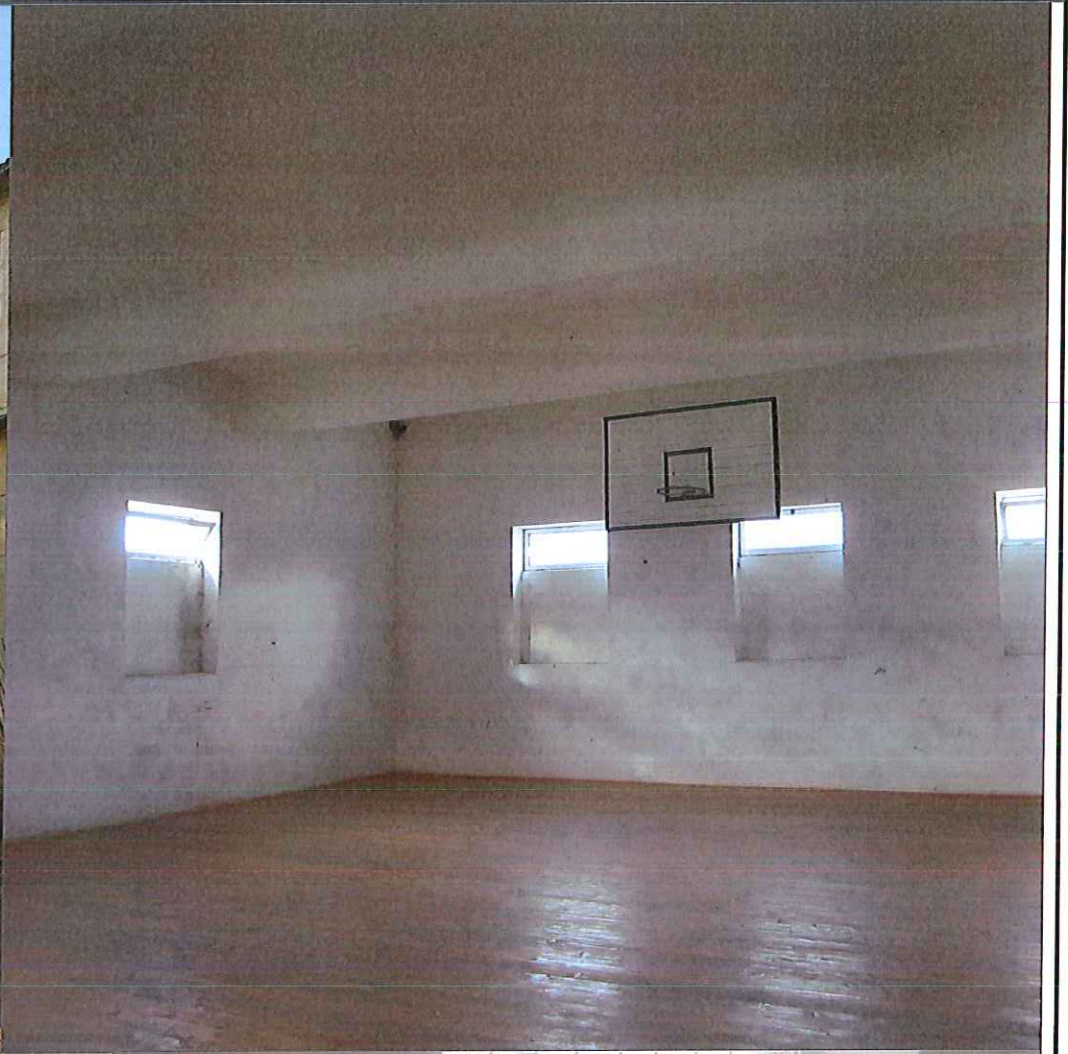
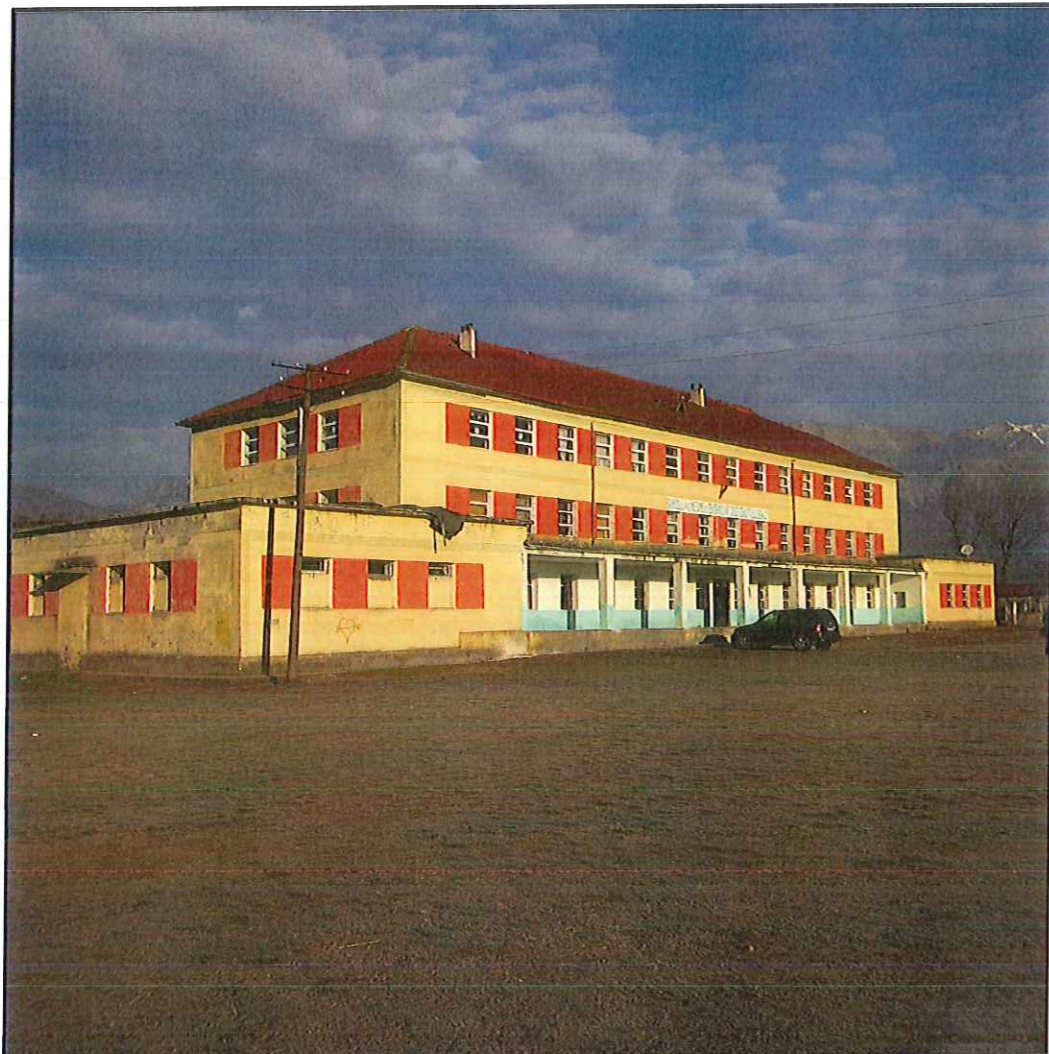







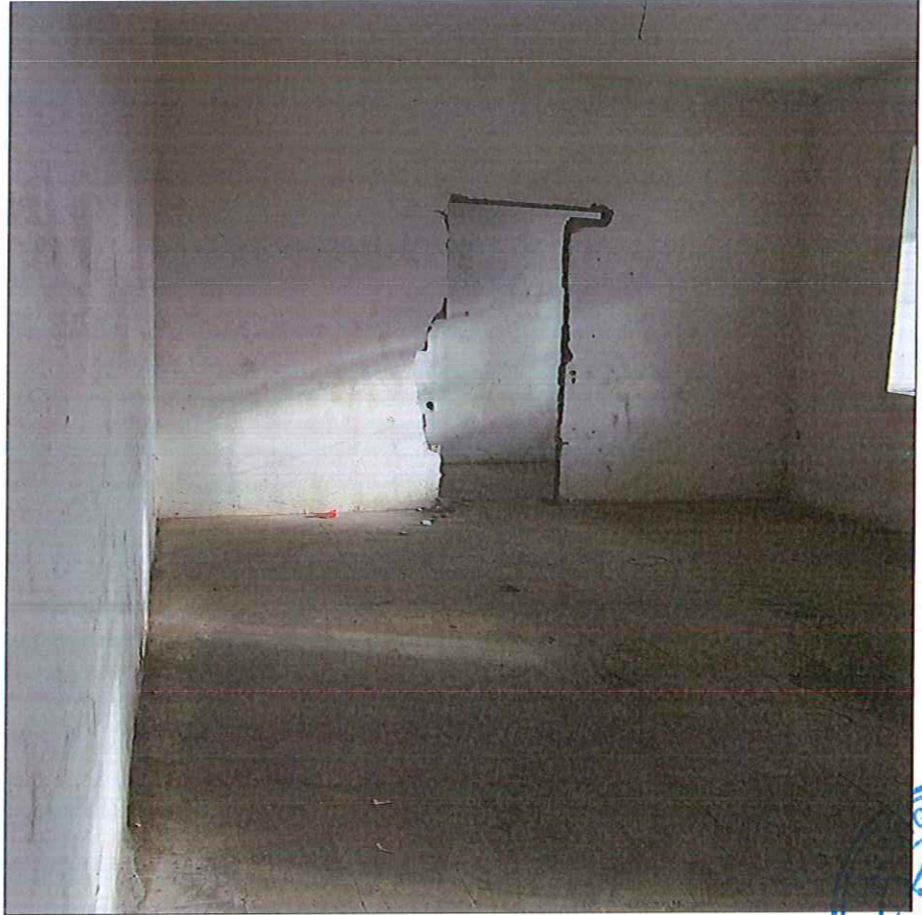
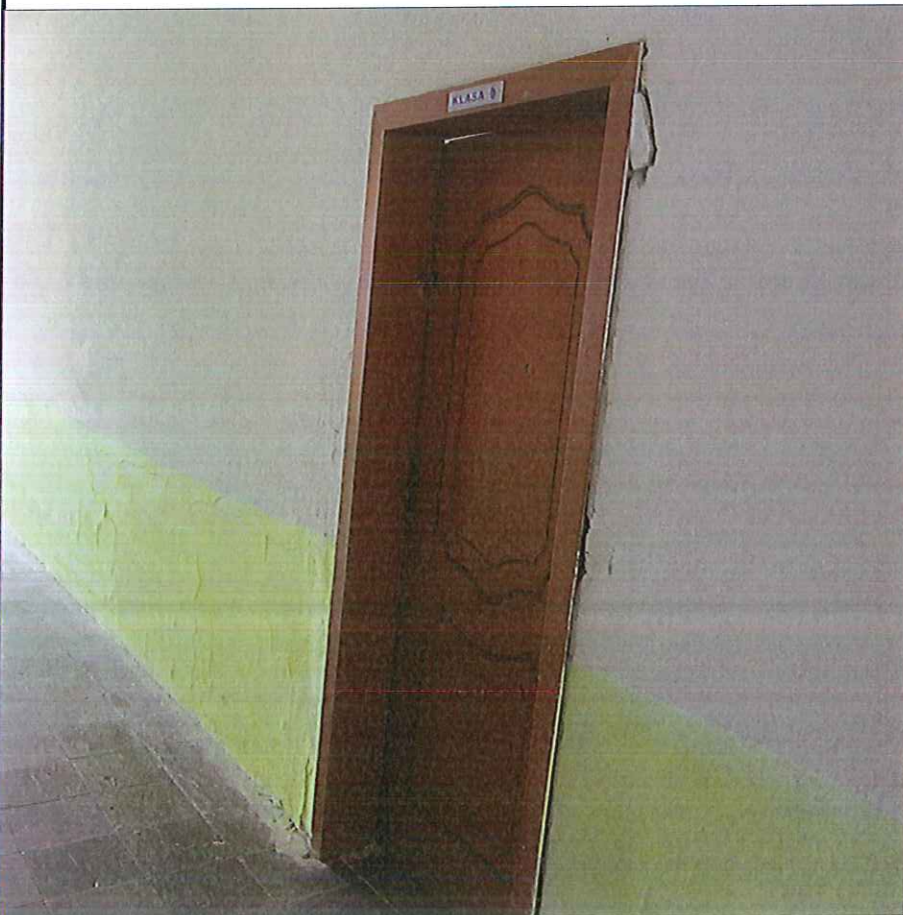
NJESIA ADMINISTRATIVE LLUGAJ

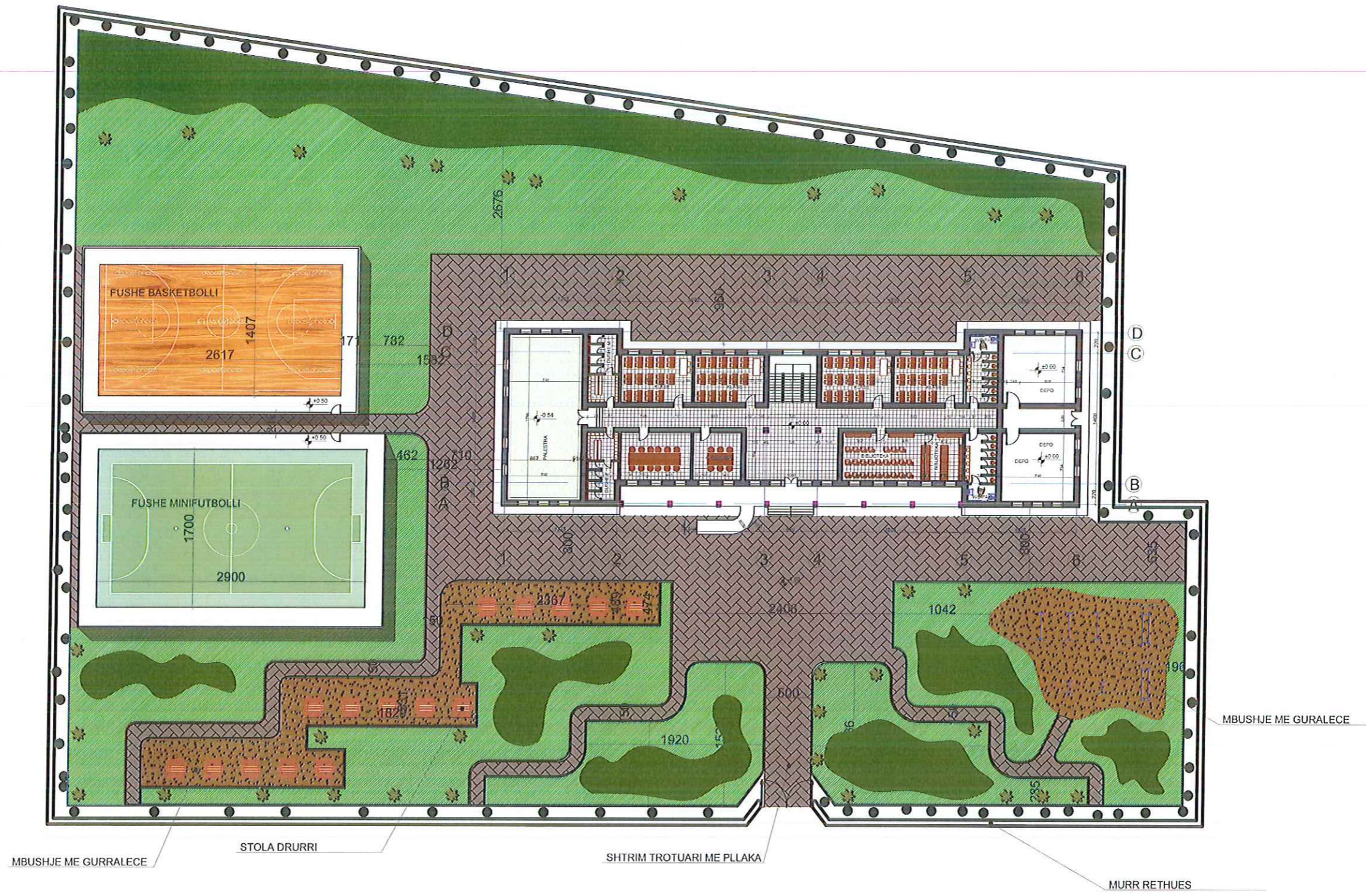
 <p>REPUBLIKA E SHQIPERISE</p> <p>BASHKIA TROPOJE</p>	 <p>BASHKIA TROPOJE</p>	<p>PROJEKT ZBATIMI</p> <p>2017</p>	<p>GRUPI I PROJEKTIMIT</p> <p>Ing. ENTELA CANO      Ing. ERJONA BUJUPI      Ing. BESJANA MEMOCI          Ark. ARBER BUZI      Ing. VIANTEROLA ISUFI      Ing. EDLIRA KONDO          Ing. MEFAIL HALILAJ      Ing. NEVILA XHEMALAJ      Ing. ENIDA SHERRI</p>			 <p>A&amp;E ENGINEERING          sh.p.k          Nipi: K 22/06          Tiranë - Albania          Adresa: Rr. "ISLAM ALLA"          Mob: ++355 (0)69 2079981          Mob: ++355 (0)69 2079982</p>	<p>RIKOSTRUKSIONI I SHKOLLE "OSO DAUTI" LLUGAJ</p>		<p>SHKALLA.</p>
		<p>VENDODHJA E OBJEKTIT</p>		<p>FL.</p> <p>A01</p>	<p>1:1000</p>				

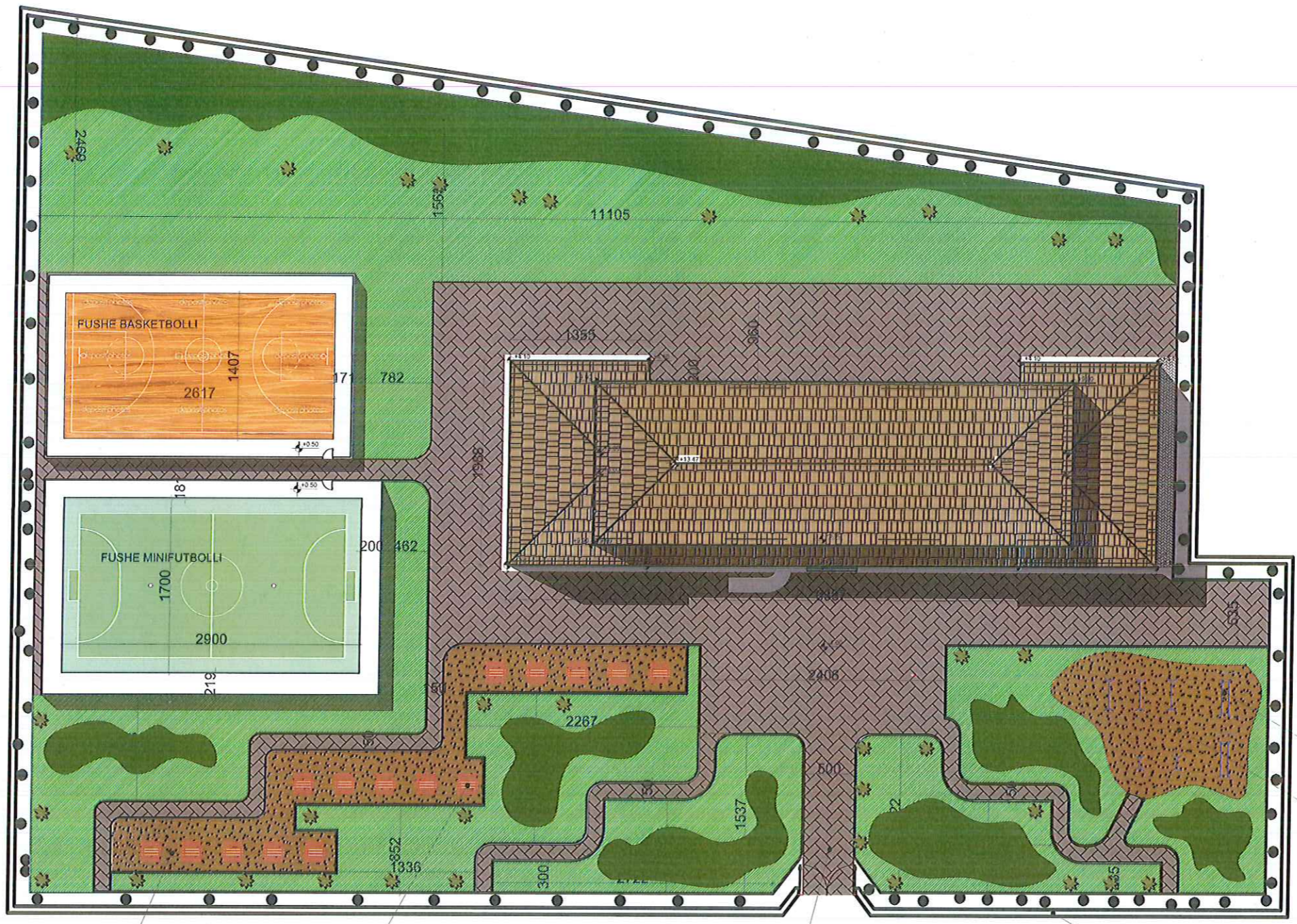




 <p>REPUBLIKA E SHQIPERISE</p> <p>BASHKIA TROPOJE</p>	 <p>BASHKIA TROPOJE</p>	<p>PROJEKT ZBATIMI</p> <p>2017</p>	<p>GRUPI I PROJEKTIMIT</p> <p>Ing. ENTELA CANO Ark. ARBER BUZI Ing. MEFAIL HALILAJ</p> <p>Ing. ERJONA BUJUPI Ing. VIANTEROLA ISUFI Ing. NEVILA XHEMALAJ</p> <p>Ing. BESJANA MEMOCI Ing. EDLIRA KONDO Ing. ENIDA SHERRI</p>	 <p>A &amp; E ENGINEERING Tirana, Albania</p>	<p>RIKOSTRUKSIONI I SHKOLLE "OSO DAUTI" LLUGAJ</p> <p>FOTO TE GJENDJES EGZISTUESE</p>	<p>SHKALLA.</p> <p>FL. A03</p>
		<p>Adresa: Rr. "ISLAM ALLA" Mob: ++355 (0)69 2079981 Mob: ++355 (0)69 2079982</p>		<p>A &amp; E ENGINEERING "sh.p.k"</p>		







MBUSHJE ME GURRALECE

STOLA DRURRI

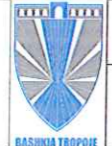
SHTRIM TROTUARI ME PLLAKA

MURR RETHUES

VEGLA FORCE  
MBUSHJE ME GURALECE



REPUBLIKA E SHQIPERISE  
BASHKIA TROPOJE



PROJEKT ZBATIMI  
2017

GRUPI I PROJEKTIMIT

Ing. ENTELA CANO  
Ark. ARBER BUZI  
Ing. MEFAIL HALILAJ  
Ing. ERJONA BUJUPI  
Ing. VIANTEROLA ISUFI  
Ing. NEVILA XHEMALAJ  
Ing. BESJANA MEMOCI  
Ing. EDLIRA KONDO  
Ing. ENIDA SHERRI



A&E ENGINEERING "sh.p.k"

Adresa: Rr. "ISLAM ALLA"  
Mob: ++355 (0)69 2079981  
Mob: ++355 (0)69 2079982

RIKOSTRUKSIONI I SHKOLLE "OSO DAUTI" LLUGAJ

PLAN VENDOSJE

FL.  
A06

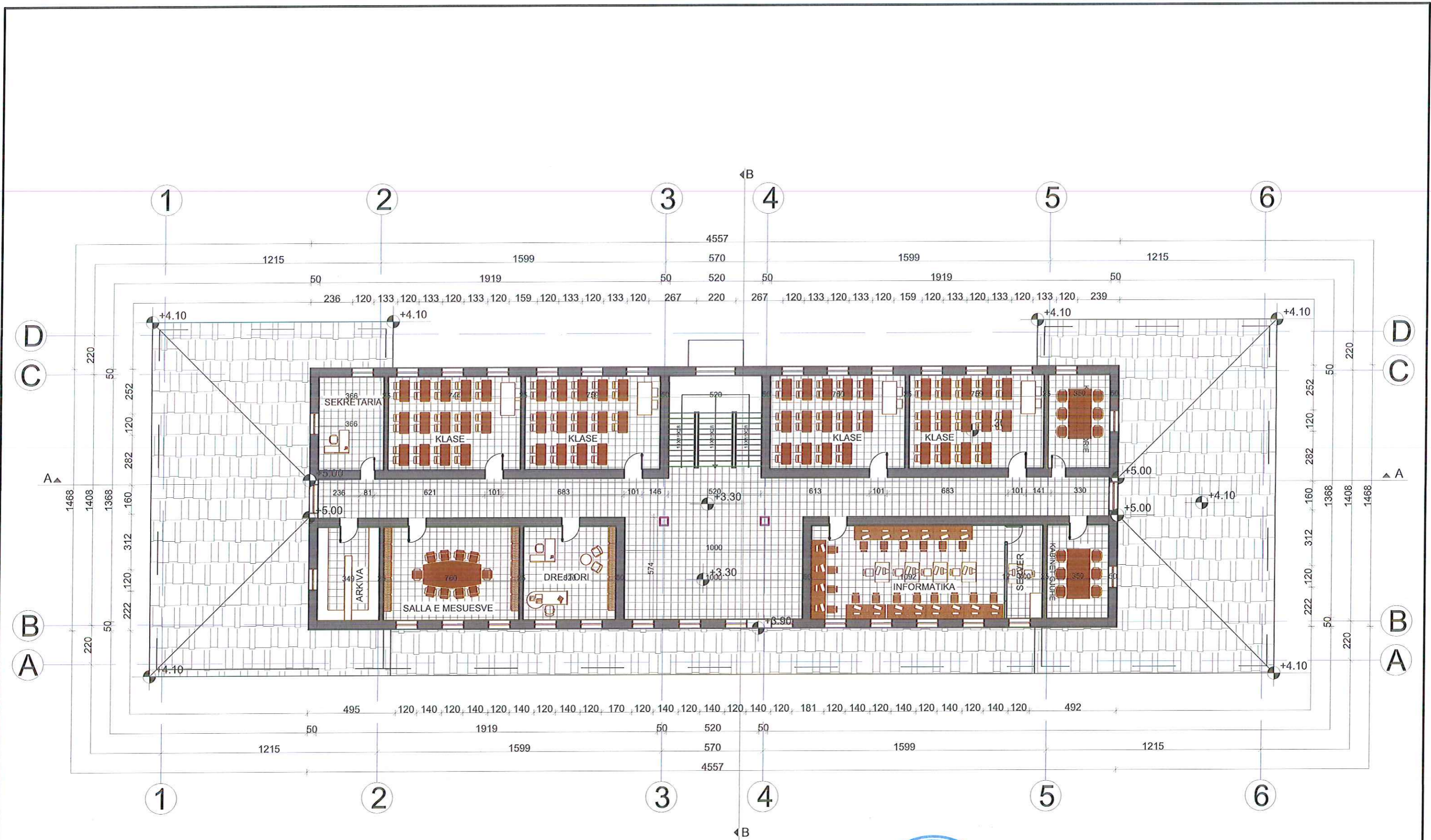
SHKALLA.

1:500



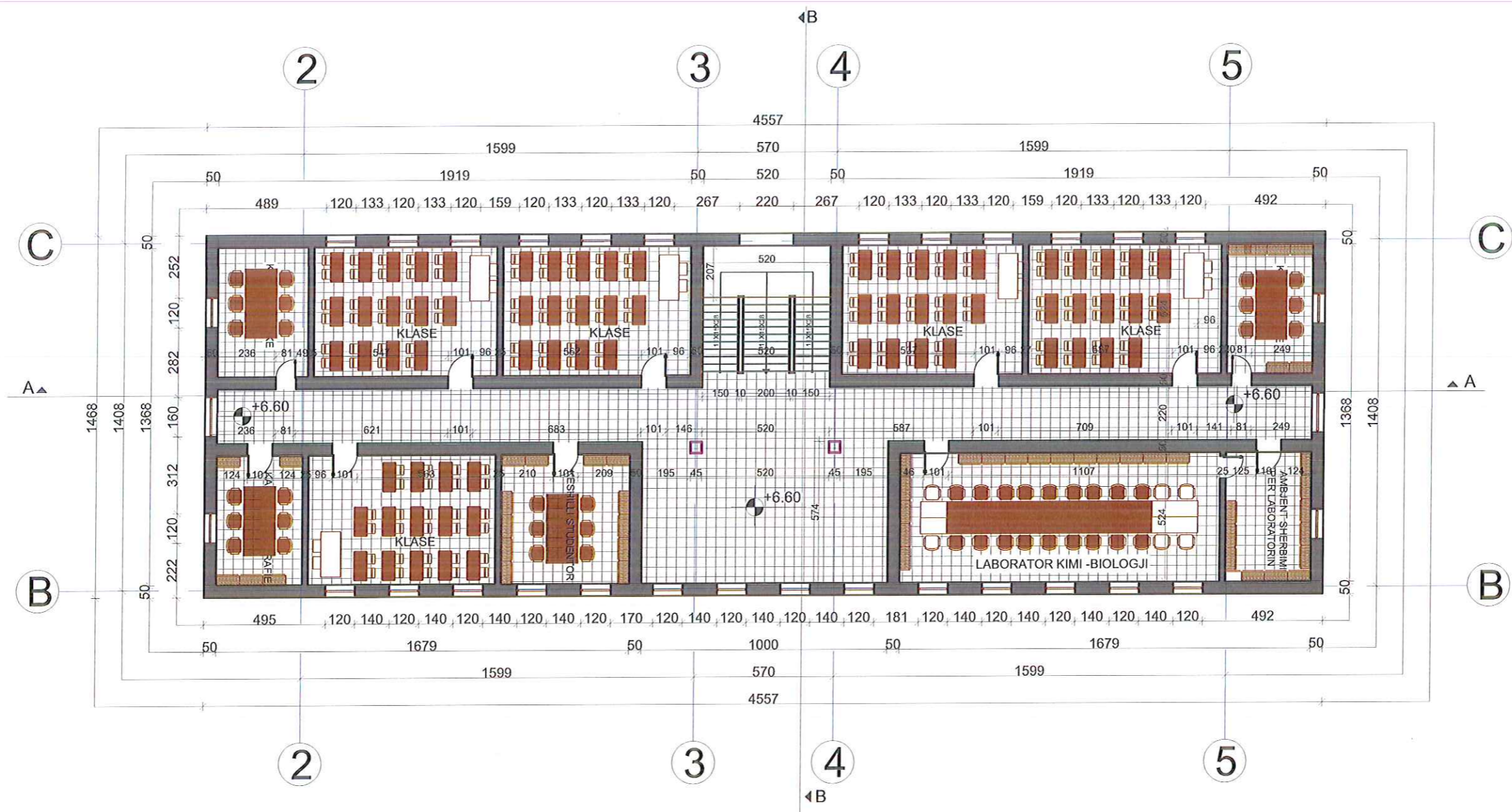








**A&E ENGINEERING**  
sh.p.k  
Adresa: Rr. "ISLAM ALLA"  
Mob : ++355 (0)69 2079981  
Mob : ++355 (0)69 2079982



**" A & E ENGINEERING "**  
sh.p.k  
Adresa: Rr. "ISLAM ALLA"  
Mob : ++355 (0)69 2079981  
Mob : ++355 (0)69 2079982



REPUBLIKA E SHQIPERISE  
BASHKIA TROPOJE



PROJEKT ZBATIMI  
2017

GRUPI I PROJEKTIMIT

Ing.ENTELE CANO      Ing.ERJONA BUJUPI      Ing.BESJANA MEMOCI  
Ark.ARBER BUZI      Ing.VIANTEROLA ISUFI      Ing.EDLIRA KONDO  
Ing.MEFAIL HALILAJ      Ing.NEVILA XHEMALAJ      Ing.ENIDA SHERRI

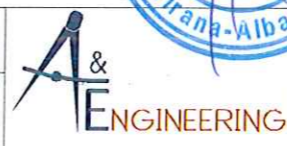
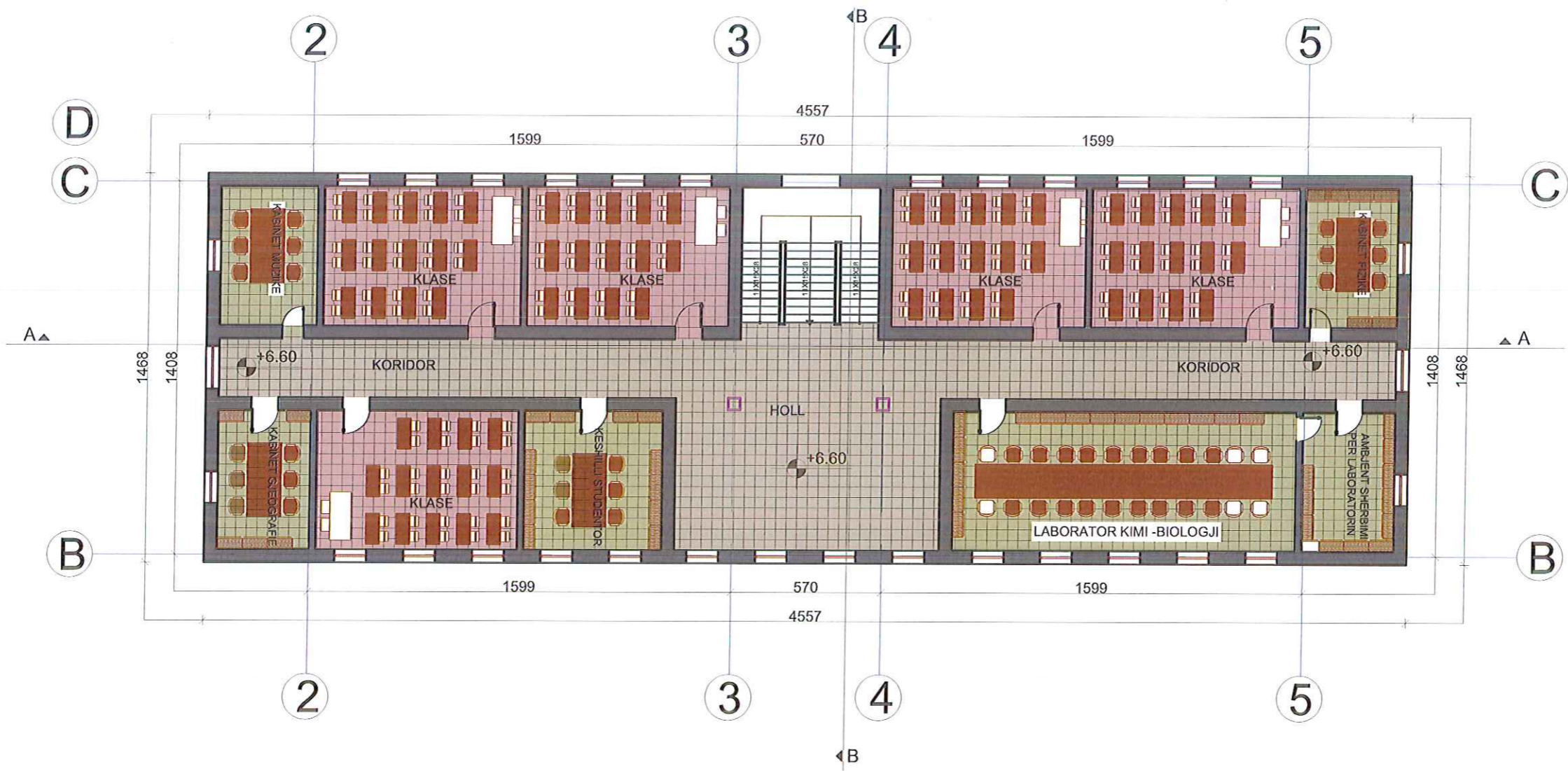
RIKOSTRUKSIONI I SHKOLLE "OSO DAUTI" LLUGAJ

SHKALLA.

PLANIMETRIA E KATIIT TE DYTE

FL.  
A11

1:200



**A & E ENGINEERING**  
sh.p.k  
Adresa: Rr. "ISLAM ALLA"  
Mob : ++355 (0)69 2079981  
Mob : ++355 (0)69 2079982

REPUBLIKA E SHQIPERISE  
BASHKIA TROPOJE



PROJEKT ZBATIMI  
2017

GRUPI I PROJEKTIMIT  
Ing.ENTELE CANO Ark.ARBER BUZI Ing.MEFAIL HALILAJ  
Ing.ERJONA BUJUPI Ing.VIANTEROLA ISUFI Ing.NEVILA XHEMALAJ  
Ing.BESJANA MEMOCI Ing.EDLIRA KONDO Ing.ENIDA SHERRI

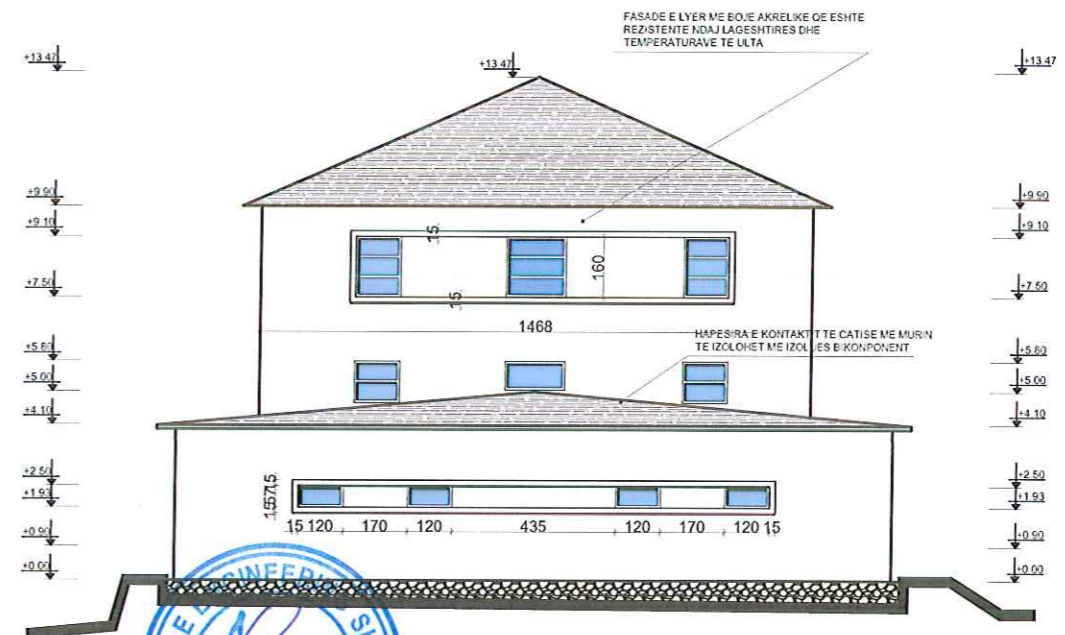
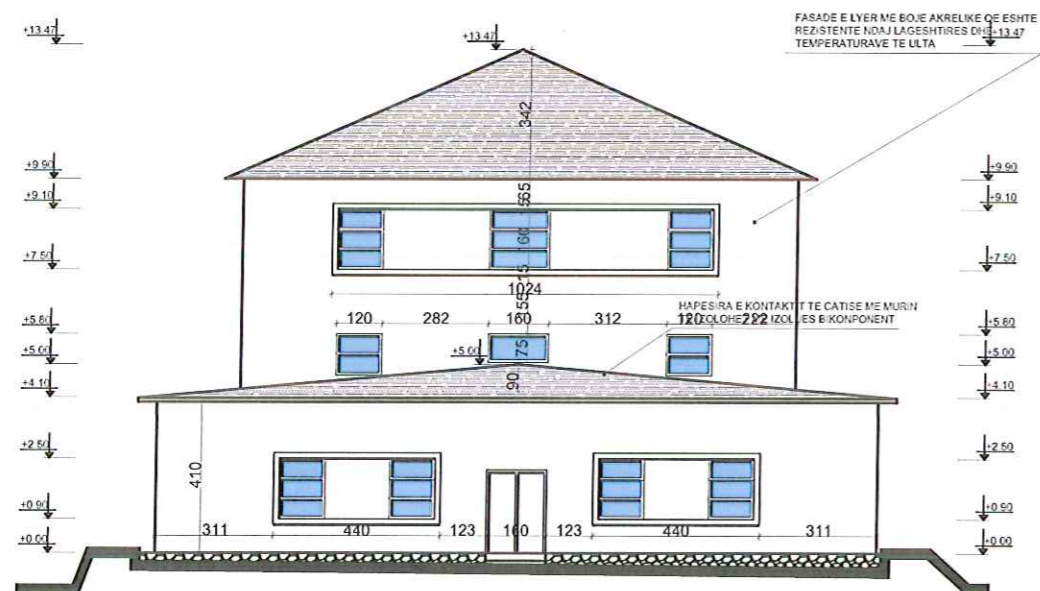
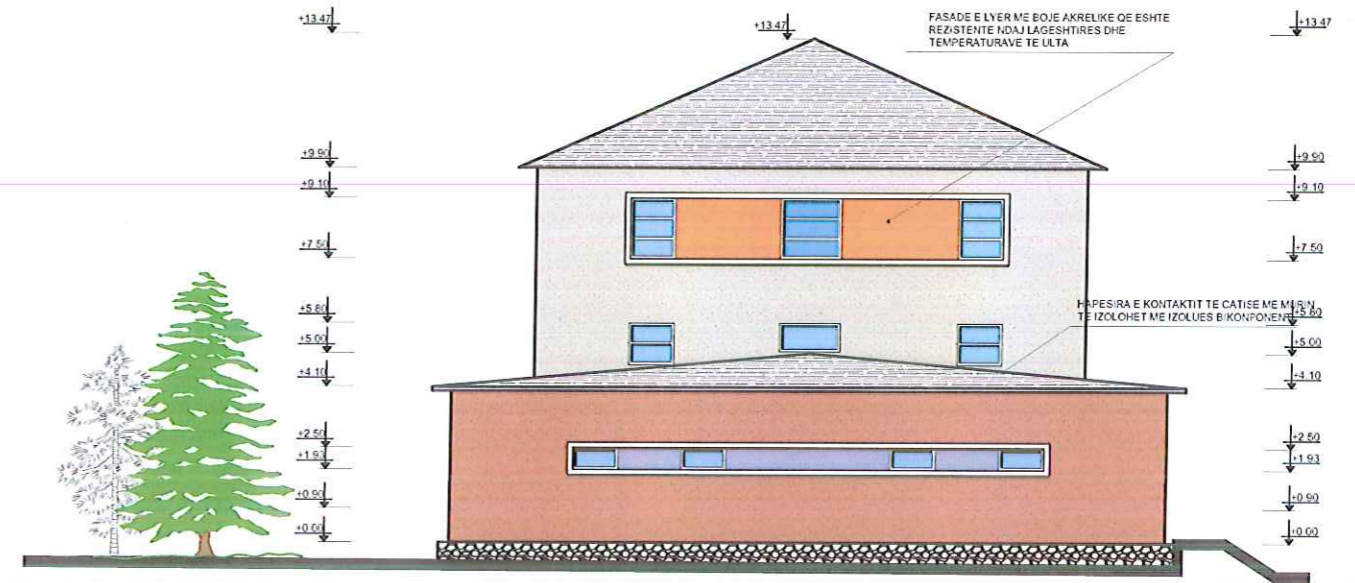
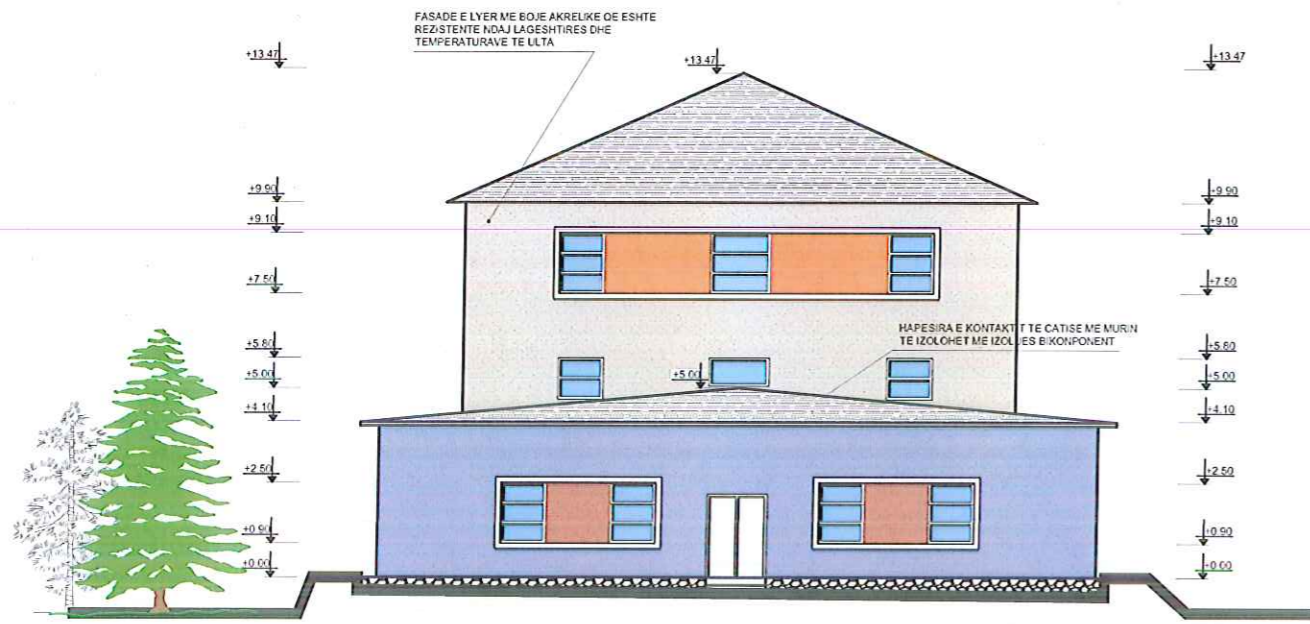
RIKOSTRUKSIONI I SHKOLLE "OSO DAUTI" LLUGAJ  
PLANIMETRIA E KATIIT TE DYTE(MOBILIM)

SHKALLA.  
FL.  
A12  
1:200









REPUBLIKA E SHQIPERISE  
BASHKIA TROPOJE



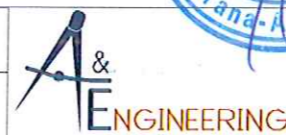
PROJEKT ZBATIMI  
2017

GRUPI I PROJEKTIMIT

Ing.ENTELE CANO  
Ark.ARBER BUZI  
Ing.MEFAIL HALILAJ

Ing.ERJONA BUJUPI  
Ing.VIANTEROLA ISUFI  
Ing.NEVILA XHEMALAJ

Ing.BESJANA MEMOCI  
Ing.EDLIRA KONDO  
Ing.ENIDA SHERRI

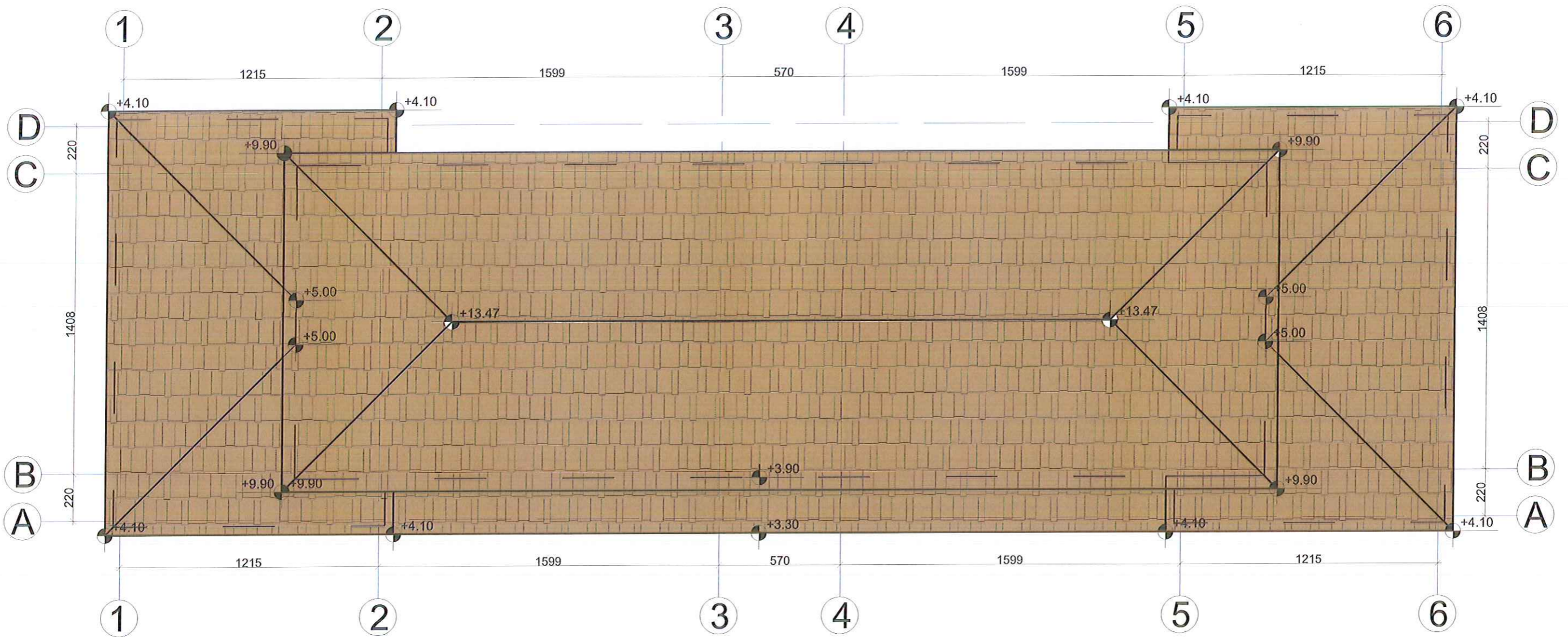


**"A & E ENGINEERING"**  
sh.p.k  
Adresa: Rr. "ISLAM ALLA"  
Mob: ++355 (0)69 2079981  
Mob: ++355 (0)69 2079982

RIKOSTRUKSIONI I SHKOLLE "OSO DAUTI" LLUGAJ  
FASADAT ANESORE  
FL.  
A15

SHKALLA.  
1:200





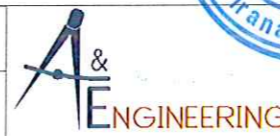
REPUBLIKA E SHQIPERISE  
BASHKIA TROPOJE



PROJEKT ZBATIMI  
2017

GRUPI I PROJEKTIMIT

Ing. ENTELA CANO  
Ark. ARBER BUZI  
Ing. MEFAIL HALILAJ  
Ing. ERJONA BUJUPI  
Ing. VIANTEROLA ISUFI  
Ing. NEVILA XIEMALAJ  
Ing. BESJANA MEMOCI  
Ing. EDLIRA KONDO  
Ing. ENIDA SHERRI



A&E ENGINEERING sh.p.k.  
Adresa: Rr. "ISLAM ALLA"  
Mob: ++355 (0)69 2079981  
Mob: ++355 (0)69 2079982

RIKOSTRUKSIONI I SHKOLLE "OSO DAUTI" LLUGAJ

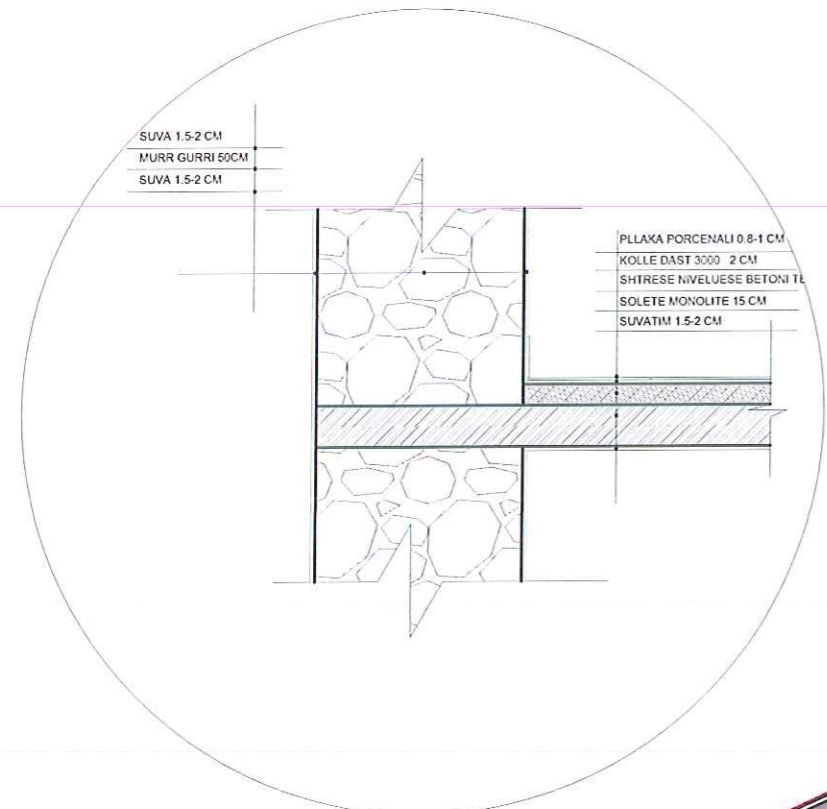
PLANIMETRIA E CATISE

FL.  
A17

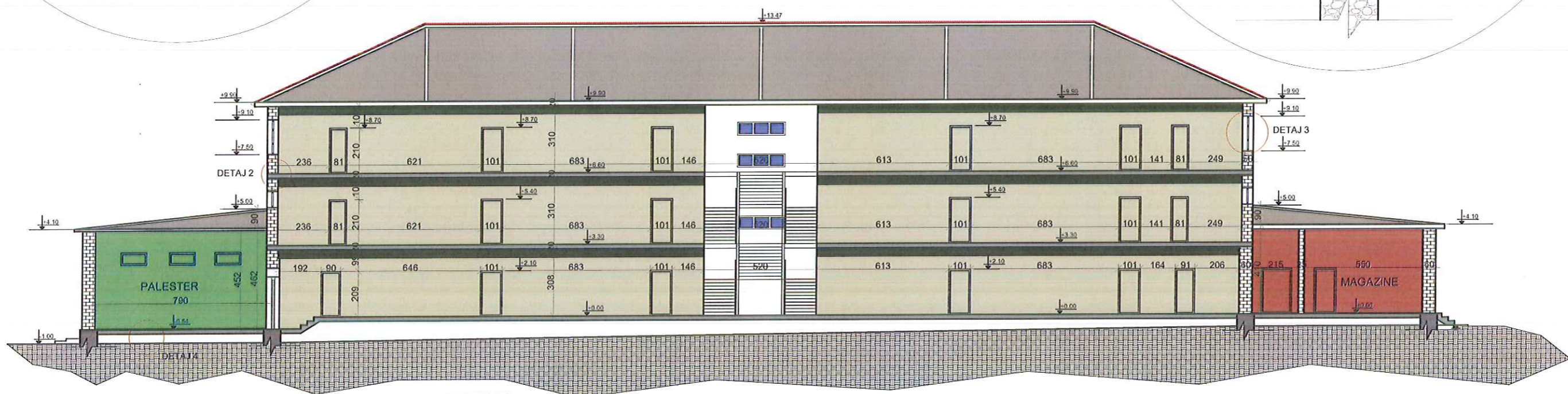
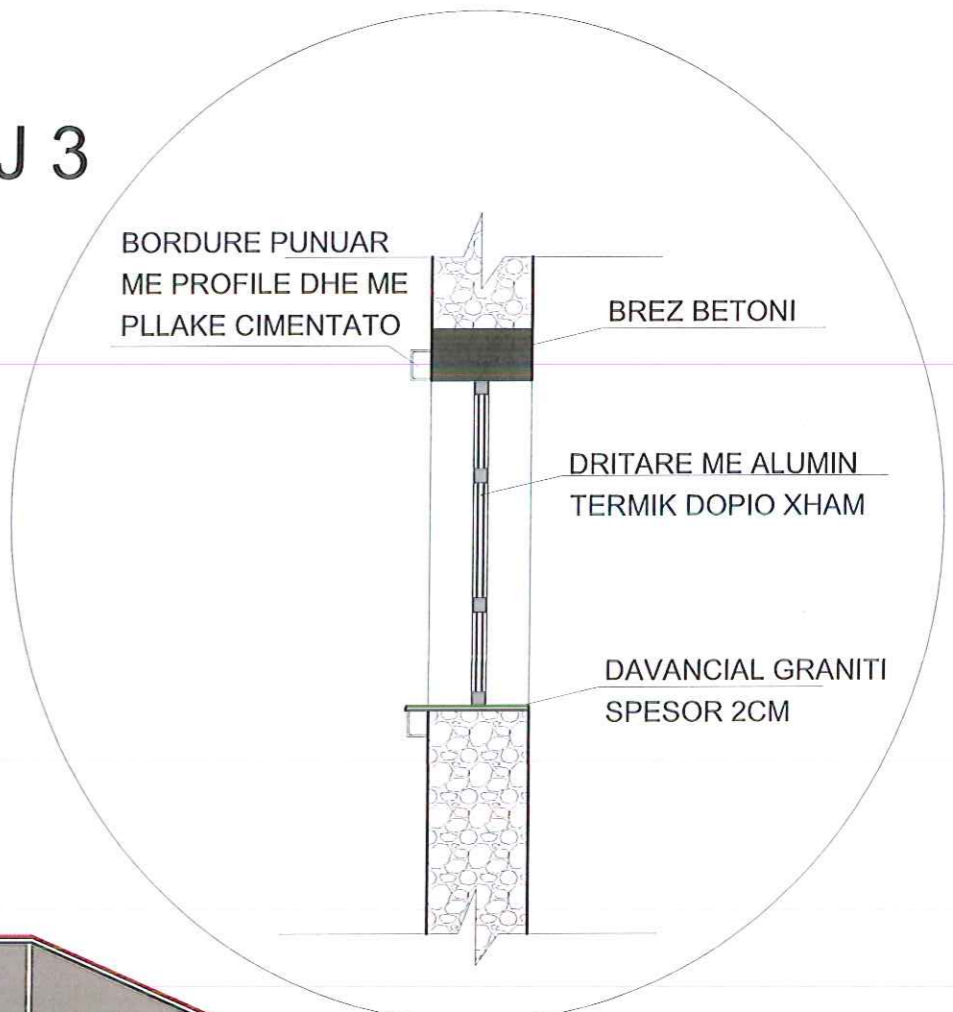
SHKALLA.

1:200

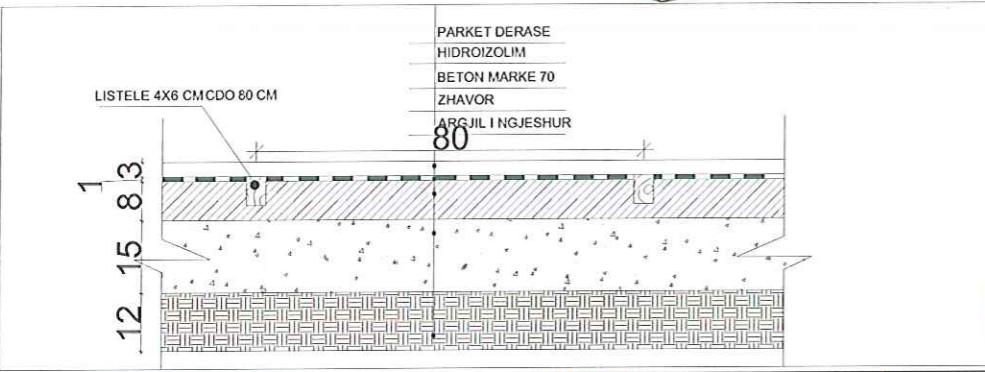
# DETAJ 2



# DETAJ 3

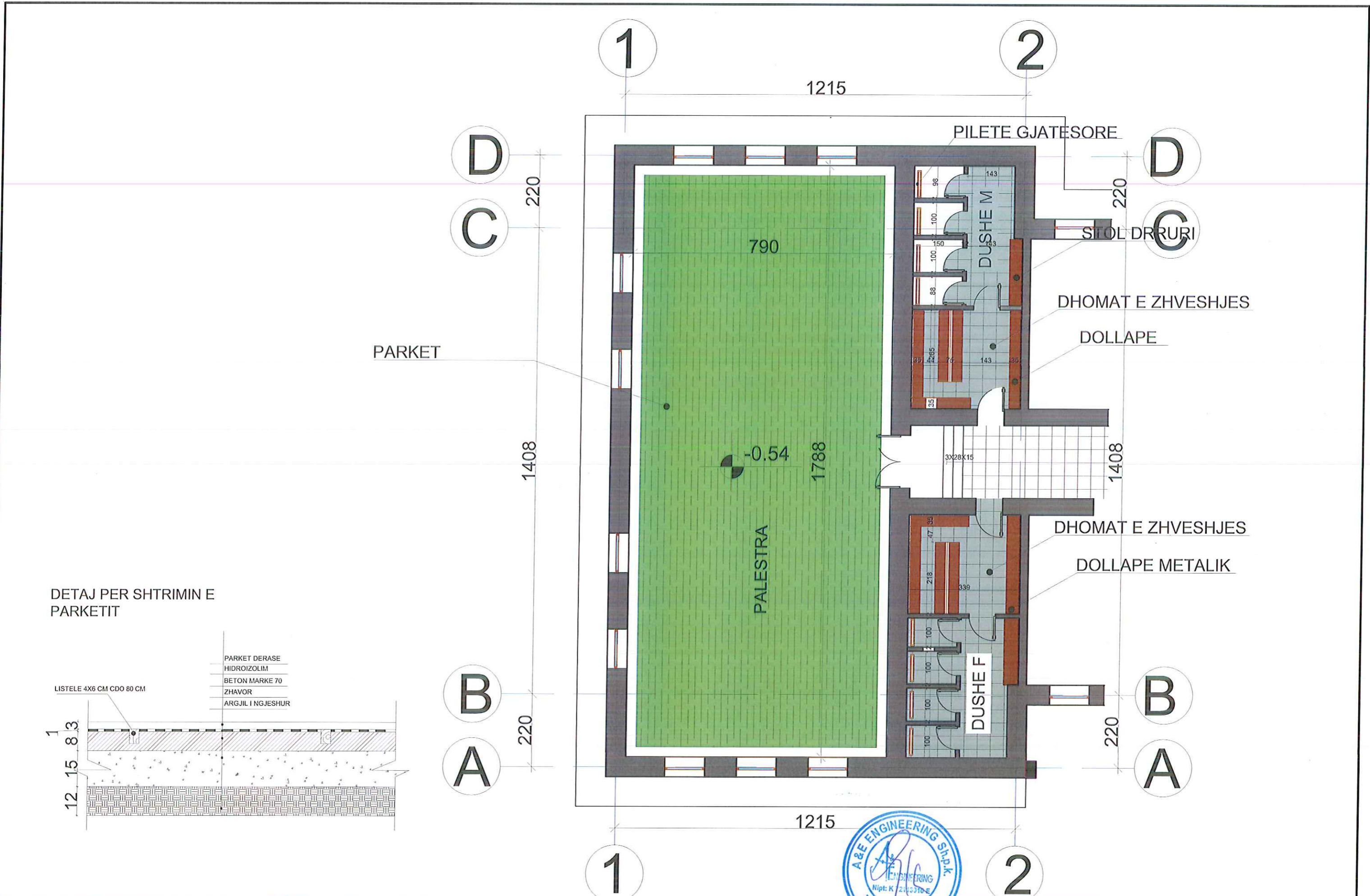


# DETAJ 4

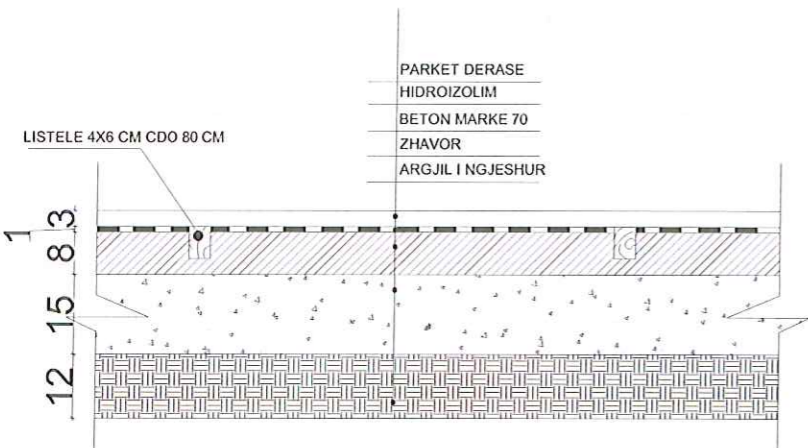


<p>REPUBLIKA E SHQIPERISE</p> <p>BASHKIA TROPOJE</p>	<p>BASHKIA TROPOJE</p>	PROJEKT ZBATIMI	GRUPI I PROJEKTIMIT			<p>A&amp;E ENGINEERING "sh.p.k"</p> <p>Adresa: Rr. "ISLAM ALLA" Mob: ++355 (0)69 2079981 Mob: ++355 (0)69 2079982</p>	RIKOSTRUKSIONI I SHKOLLE "OSO DAUTI" LLUGAJ	SHKALLA.
		2017	Ing. ENTELA CANO Ark. ARBER BUZI Ing. MEFAIL HALILAJ	Ing. ERJONA BUJUPI Ing. VIANTEROLA ISUFI Ing. NEVILA XHEMALAJ	Ing. BESJANA MEMOCI Ing. EDLIRA KONDO Ing. ENIDA SHERRI		PRERJA A-A	FL. A18





DETAJ PER SHTRIMIN E PARKETIT



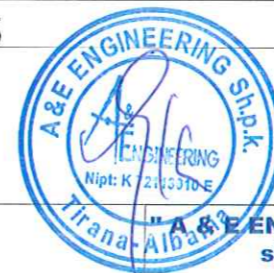
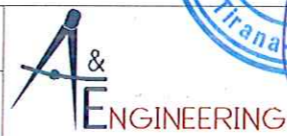
REPUBLIKA E SHQIPERISE  
BASHKIA TROPOJE



PROJEKT ZBATIMI  
2017

GRUPI I PROJEKTIMIT

Ing. ENTELA CANO  
Ark. ARBER BUZI  
Ing. MEFAIL HALILAJ  
Ing. ERJONA BUJUPI  
Ing. VIANTEROLA ISUFI  
Ing. NEVILA XHEMALAJ  
Ing. BESJANA MEMOCI  
Ing. EDLIRA KONDO  
Ing. ENIDA SHERRI



A&E ENGINEERING sh.p.k.  
Adresa: Rr. "ISLAM ALLA"  
Mob: ++355 (0)69 2079981  
Mob: ++355 (0)69 2079982

RIKOSTRUKSIONI I SHKOLLE "OSO DAUTI" LLUGAJ

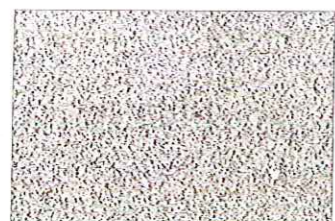
PLAN DETAJ PALESTRA

FL.  
A20

SHKALLA.

1:100

**DETAJI I SHTRESAVE TË SHKALLËVE**  
SH 1:50



- Pllake mermeri 3cm
- Liac 2cm
- Rampa b/arme
- Shtrese termoizoluese polistereni 5cm

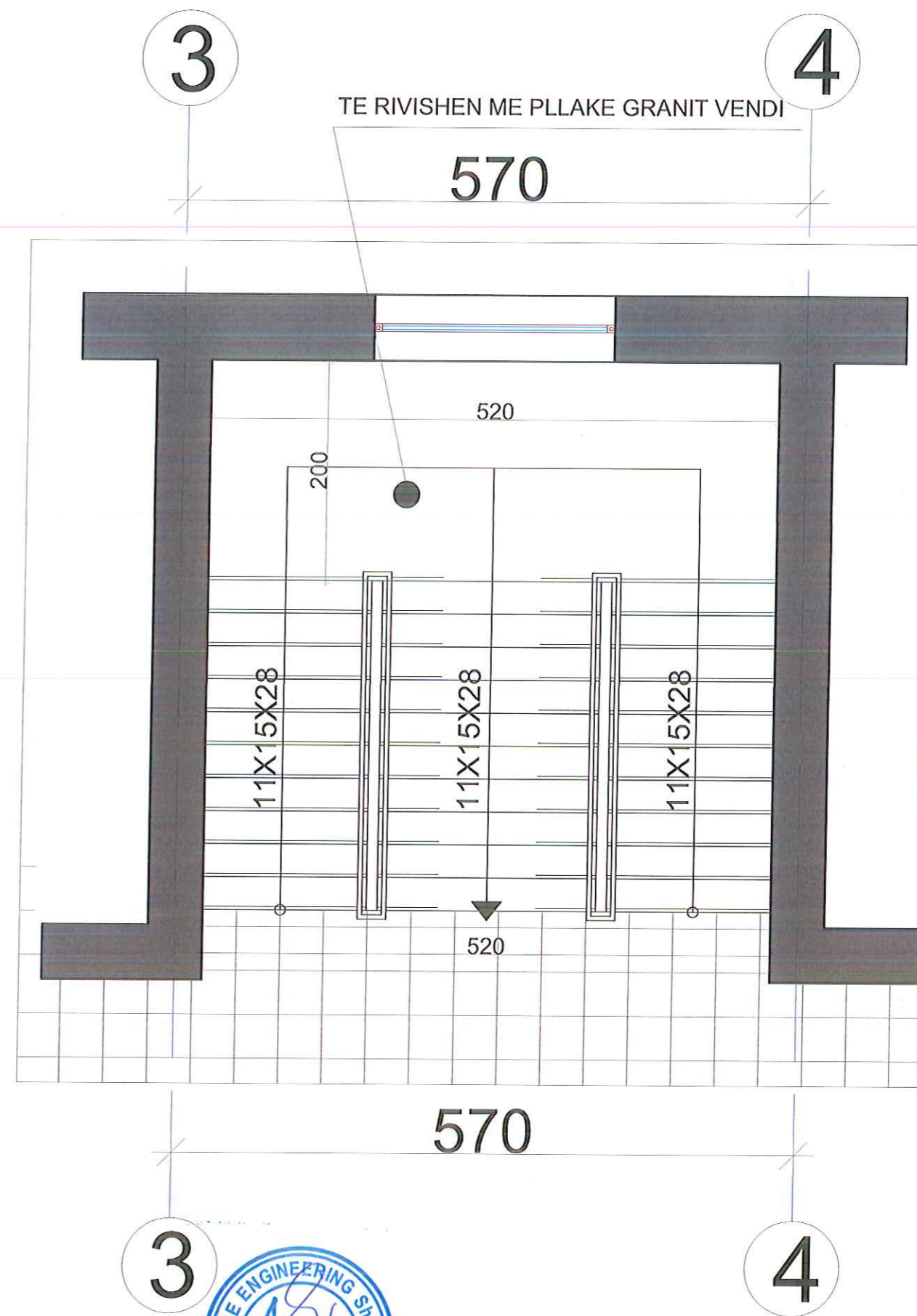
**DETAJI "D"**

- Frezim kunder rreshqitjes
- Pllake mermeri 2cm

**SHENIME:**

Gjate nderhyrjave ne zevendesimin e pllakave te bazamakeve te shkalleve, duhet te kihet parasysh :

1. Do behet prishja dhe cmontimi i pllakave ekzistuese te bazamakeve te shkalleve.
2. Per prishjen e saj, do perdoren pajisje te cilat nuk sjellin efekte vibruese te cilat mund te cenojne qendrueshmerine pjesore apo totale te struktures mbajtese te godines;
3. Do behet pastrimi i materialeve nga procesi i cmontimit;
4. Do rivendosen pllakat te granitit sipas detajit te dhene ne vizatim, duke i fiksuar me llacimento.
5. Pllakat horizontale te bazamakeve do jene spesor 3cm dhe duhet te jene te frezuara ne skaj te tyre nepermjet dhembzimeve per arsye te eliminimit te problemit te rreshqitjes, gjate levizjes ne shkalle. Pllaka vertikale do kete spesor 2cm.
6. Gjithashtu do nderhyet (me zevendesimin e pllakave te bazamakeve) edhe ne pjesen e shkalleve te jashtme ne hyrje te shkolles pasi ka demtime ne pllakat ekzistuese te bazamakeve te ketyre shkalleve.
7. Dimensionet e pllakave te bazamakeve, te merren sipas matjeve faktike.
8. I gjithe procesi i nderhyrjes i cituar mesiper, do zhvillohet sipas instruksioneve dhe rekomandimeve se Supervizorit te Objektit.

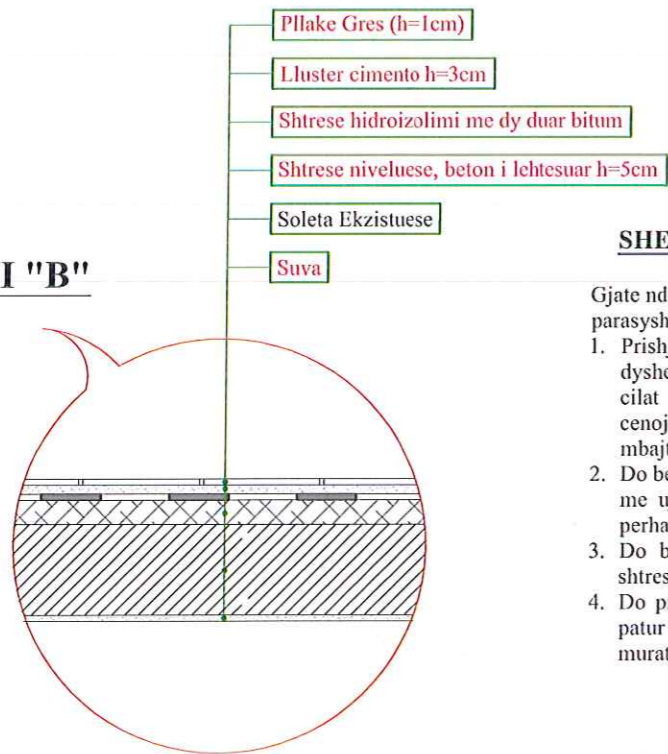






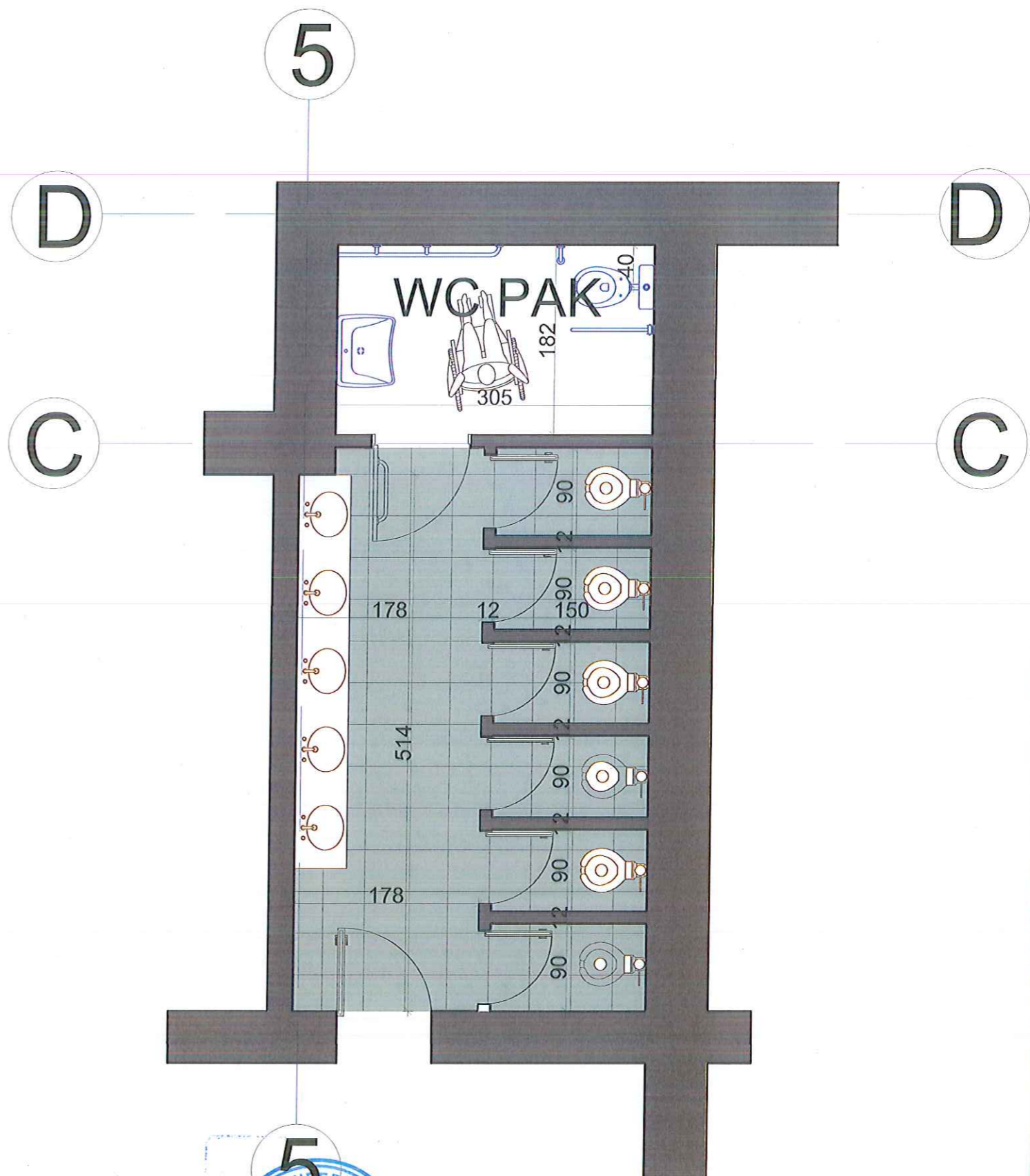
## DETAJI I SHTRESAVE TË DYSHEMESË NË TUALETE

### DETAJI "B"



#### SHENIME:

- Gjate nderhyrjeve ne shtresat e dyshemese se tualeteve, duhet patur parasysh:
1. Prishja e shtresave ekzistuese te dyshemese, deri ne nivelin e dyshemese ekzistuese. Per prishjen e saj, do perdoren pajisje te cilat nuk sjellin efekte te medha vibruese, te cilat mund te cenojne qendrueshmerine pjesore apo totale te struktures mbajtese.
  2. Do behet largimi i papastertive nga prishja nepermjet shperjarjes me uje. Shperlarja e saj me uje, ben te mundur kufizimin e perhapjes se papastertive ne atmosfere.
  3. Do behet vendosja e drejtuesve (fashove) para realizimit te shtreses se betonit nivelues.
  4. Do procedohet me shtresat e tjera sipas detajit te dhene, duke patur parasysh qe h/izolimi me bitum zgjatet rreth 30cm mbi muraturen perimetrale



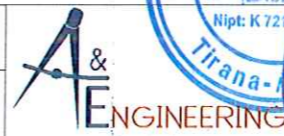
REPUBLIKA E SHQIPERISE  
BASHKIA TROPOJE



PROJEKT ZBATIMI  
2017

#### GRUPI I PROJEKTIMIT

Ing. ENTELA CANO  
 Ark. ARBER BUZI  
 Ing. MEFAIL HALILAJ  
 Ing. ERJONA BUJUPI  
 Ing. VIANTEROLA ISUFI  
 Ing. NEVILA XHEMALAJ  
 Ing. BESJANA MEMOCI  
 Ing. EDLIRA KONDO  
 Ing. ENIDA SHERRI



**A&E ENGINEERING**  
 sh.p.k.  
 Nip: K 721 01005  
 Adresa: Rr. "ISLAM ALLA"  
 Mob: ++355 (0)69 2079981  
 Mob: ++355 (0)69 2079982

RIKOSTRUKSIONI I SHKOLLE "OSO DAUTI" LLUGAJ

PLAN DETAJ TUALETI

FL.  
A23

SHKALLA.

1:50

150

614

50

50

5%

5%

R100

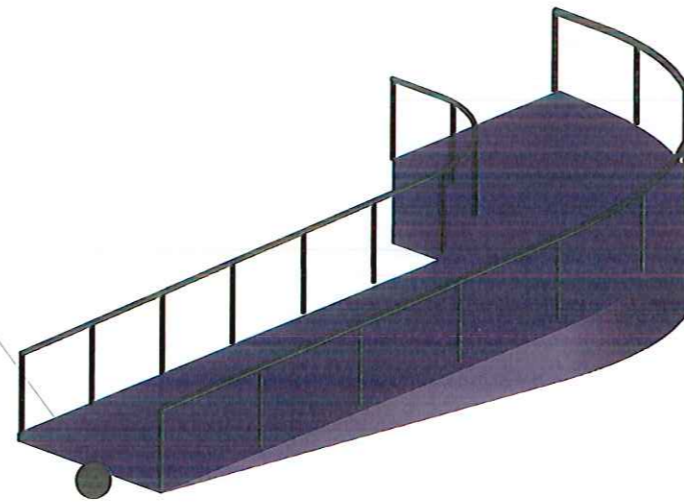
R175

R250

KANGJELL METALIKE LARTESIA 90 cm

364

3D



REPUBLIKA E SHQIPERISE

BASHKIA TROPOJE



PROJEKT ZBATIMI

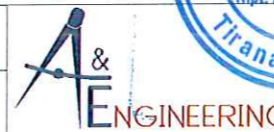
2017

GRUPI I PROJEKTIMIT

Ing.ENTELE CANO  
Ark.ARBER BUZI  
Ing.MEFAIL HALILAJ

Ing.ERJONA BUJUPI  
Ing.VIANTEROLA ISUFI  
Ing.NEVILA XHEMALAJ

Ing.BESJANA MEMOCI  
Ing.EDLIRA KONDO  
Ing.ENIDA SHERRI



A&E ENGINEERING SH.P.K.  
sh.p.k

Adresa: Rr. "ISLAM ALLA"  
Mob : ++355 (0)69 2079981  
Mob : ++355 (0)69 2079982

RIKOSTRUKSIONI I SHKOLLE "OSO DAUTI" LLUGAJ

RAMPE PER PAK

FL.  
A24

SHKALLA.

1:20

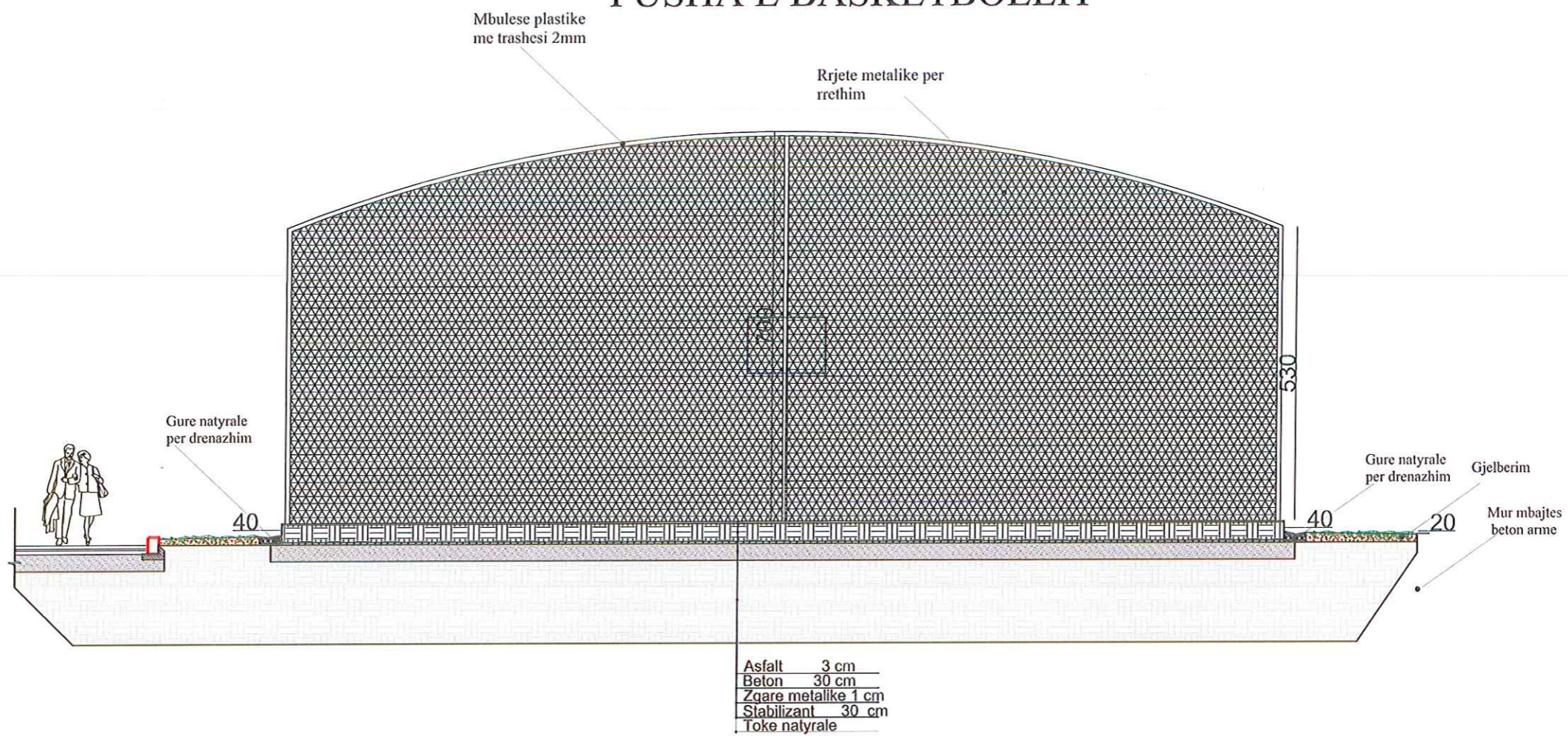
# FUSHA E MINIFUTBOLLIT



Bar artificial	2 cm
Grimca gome	3 cm
Rere	7 cm
Shtrese mbeshjtjellese	1 cm
Gjeoteksit	4 cm
Zhavor i imet	15 cm
Zhavor	15 cm
Toke natyrale	



# FUSHA E BASKETBOLLIT





REPUBLIKA E SHQIPERISE  
BASHKIA TROPOJE



PROJEKT ZBATIMI  
2017

GRUPI I PROJEKTIMIT

Ing. ENTELA CANO  
Ark. ARBER BUZI  
Ing. MEFAIL HALILAJ  
Ing. ERJONA BUJUPI  
Ing. VIANTEROLA ISUFI  
Ing. NEVILA XHEMALAJ  
Ing. BESJANA MEMOCI  
Ing. EDLIRA KONDO  
Ing. ENIDA SHERRI

**A&E ENGINEERING**  
Nip: K 721/3010 E / Sh. g. k  
Adresa: Rr. "ISLAM ALLA"  
Mob: +355 (0)69 2079981  
Mob: +355 (0)69 2079982

RIKOSTRUKSIONI I SHKOLLE "OSO DAUTI" LLUGAJ

SHKALLA.

IMAZHE

FL.  
A27

1:20



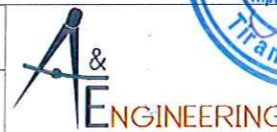
REPUBLIKA E SHQIPERISE  
BASHKIA TROPOJE



PROJEKT ZBATIMI  
2017

GRUPI I PROJEKTIMIT

Ing.ENTELE CANO Ark.ARBER BUZI Ing.MEFAIL HALILAJ  
Ing.ERJONA BUJUPI Ing.VIANTEROLA ISUFI Ing.NEVILA XHEMALAJ  
Ing.BESJANA MEMOCI Ing.EDLIRA KONDO Ing.ENIDA SHERRI



Nipi: K 221/10-05  
"A & E ENGINEERING"  
sh.p.k  
Adresa: Rr. "ISLAM ALLA"  
Mob : ++355 (0)69 2079981  
Mob : ++355 (0)69 2079982

RIKOSTRUKSIONI I SHKOLLE "OSO DAUTI" LLUGAJ  
IMAZHE  
FL.  
A28

SHKALLA.  
1:20