

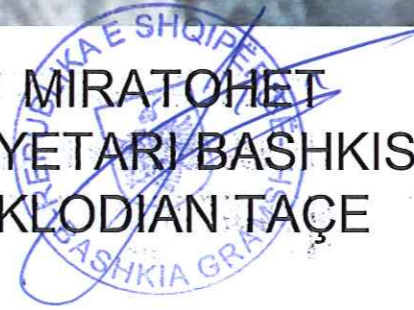
PLANVENDOSJA E PËRGJITHSHME E URËS TË KISHAVICES, Sh. 1:500 A3



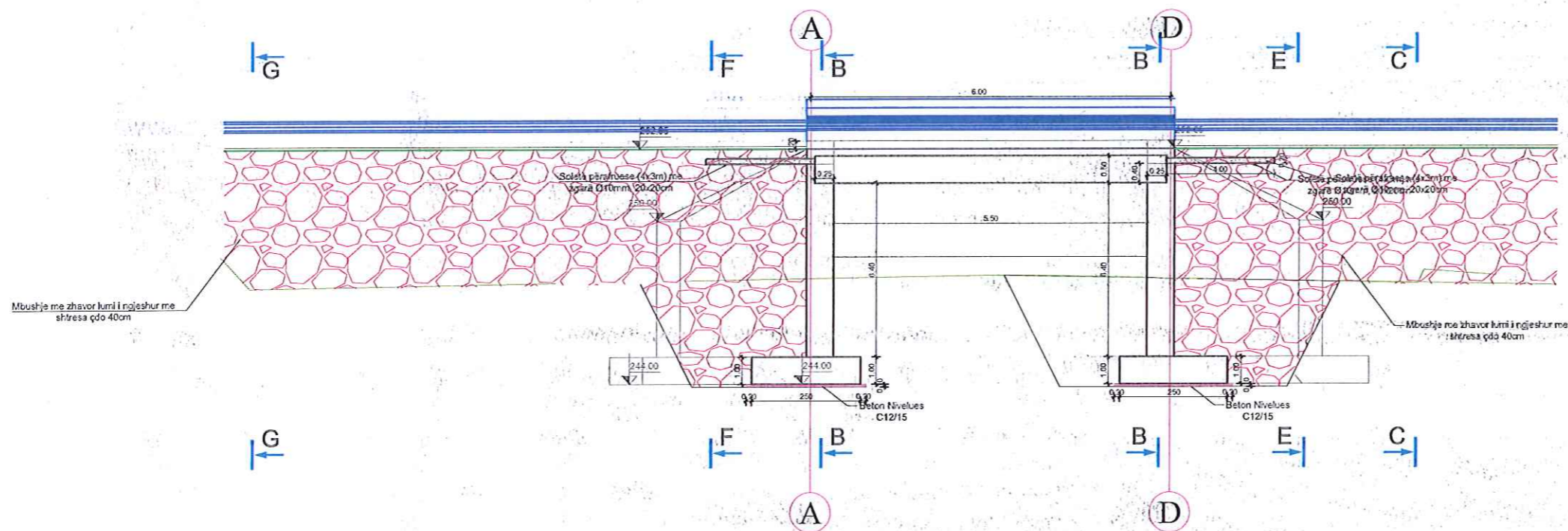
DREJTORIA E PLANIFIKIMIT TE TERRITORIT  
ING. ALI ÇOHODARI

NENTOR 2022

MIRATOHET  
KRYETARI BASHKISE  
KLODIAN TAÇE



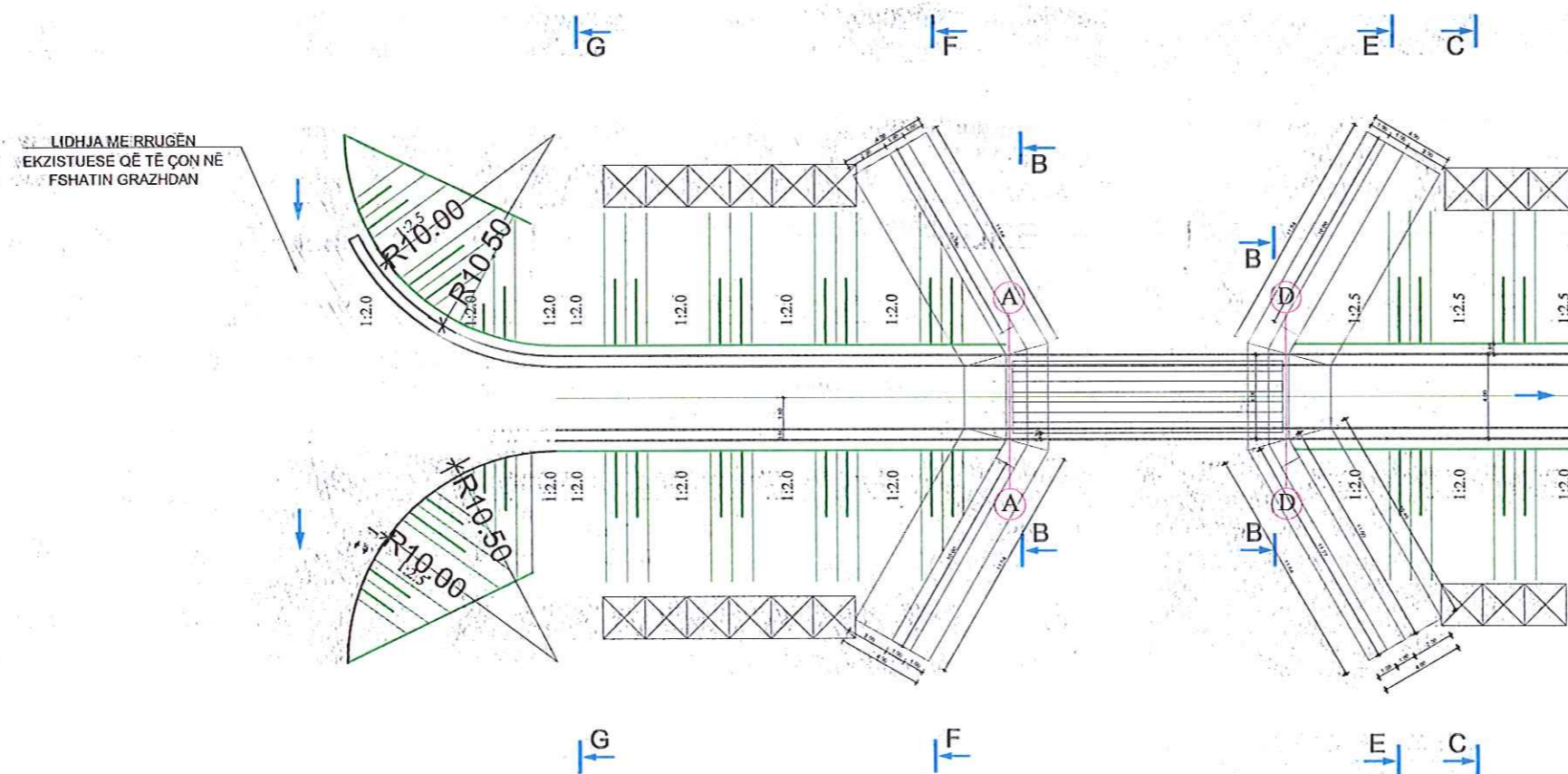
PROFILI GJATËSOR I URËS TË KISHAVICES, Sh. 1:500 A3



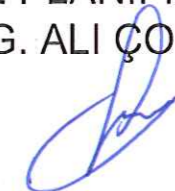
MIRATOHET  
KRYETARI BASHKISE  
KLODIAN TAÇE



PROFILI GJATËSOR I ANËS TË MAJTË TË URËS TË KISHAVICES, Sh. 1:200 A3



DREJTORIA E PLANIFIKIMIT TE TERRITORIT  
ING. ALI ÇOHODARI

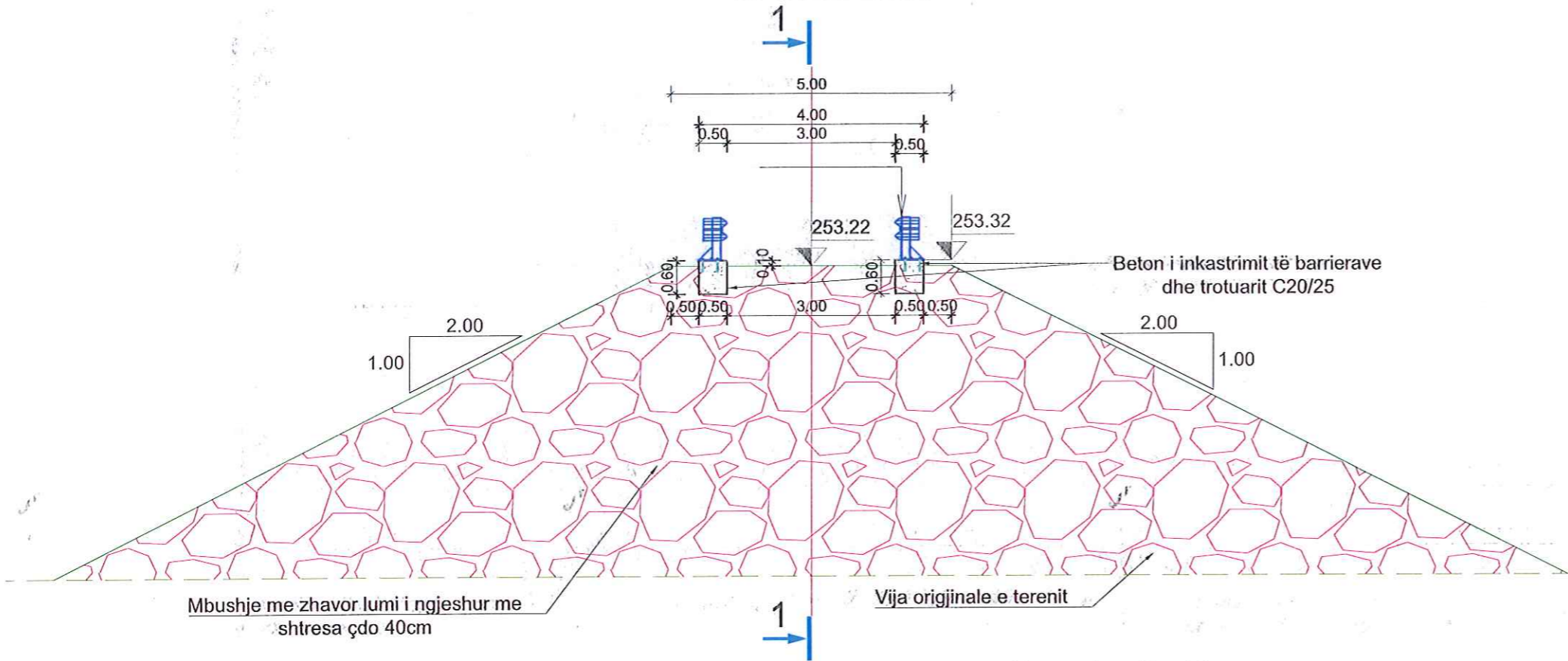


PUNOI:  
ING. EDION SHTYLLA



# PRERJE TËRTHORE TË URËS TË KISHAVICES, Sh. 1:100 A3

## Prerja C-C Sh. 1-100

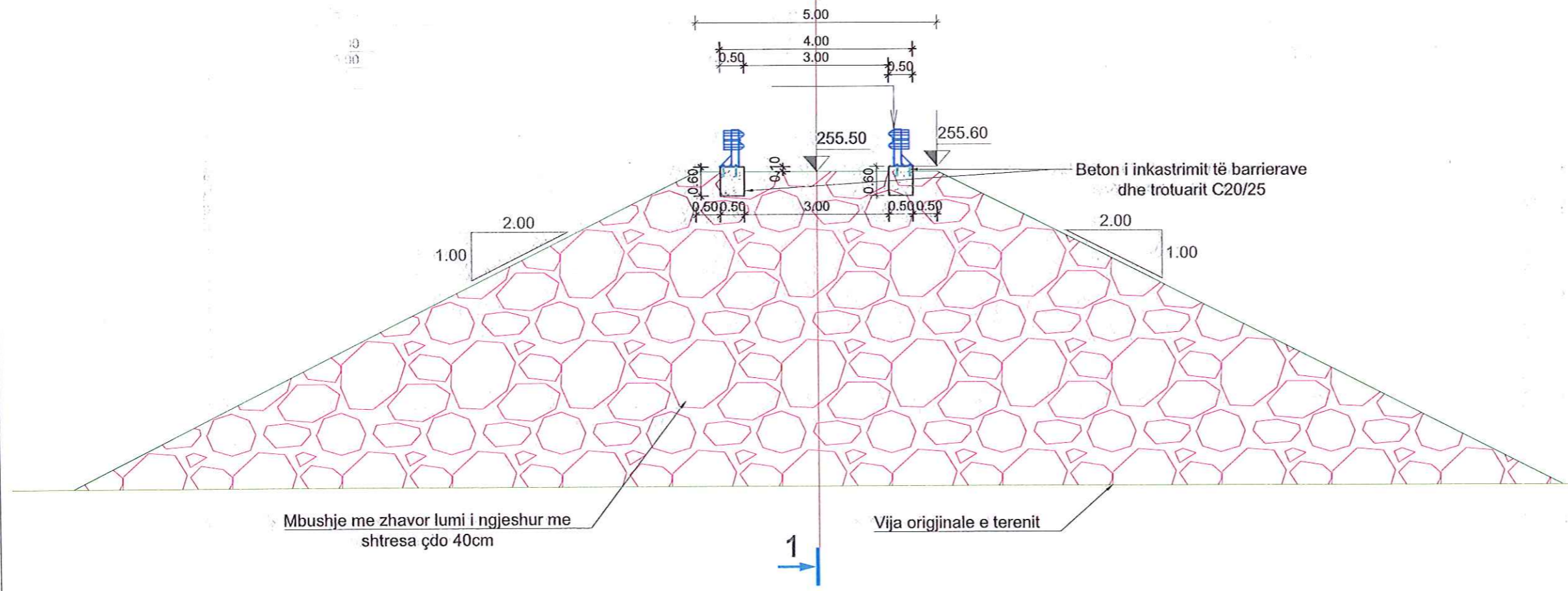


MIRATOHET  
KRYETARI BASHKISE  
KLODIAN TAÇE



DREJTORIA E PLANIFIKIMIT TE TERRITORIT  
ING. ALI ÇOHODARI

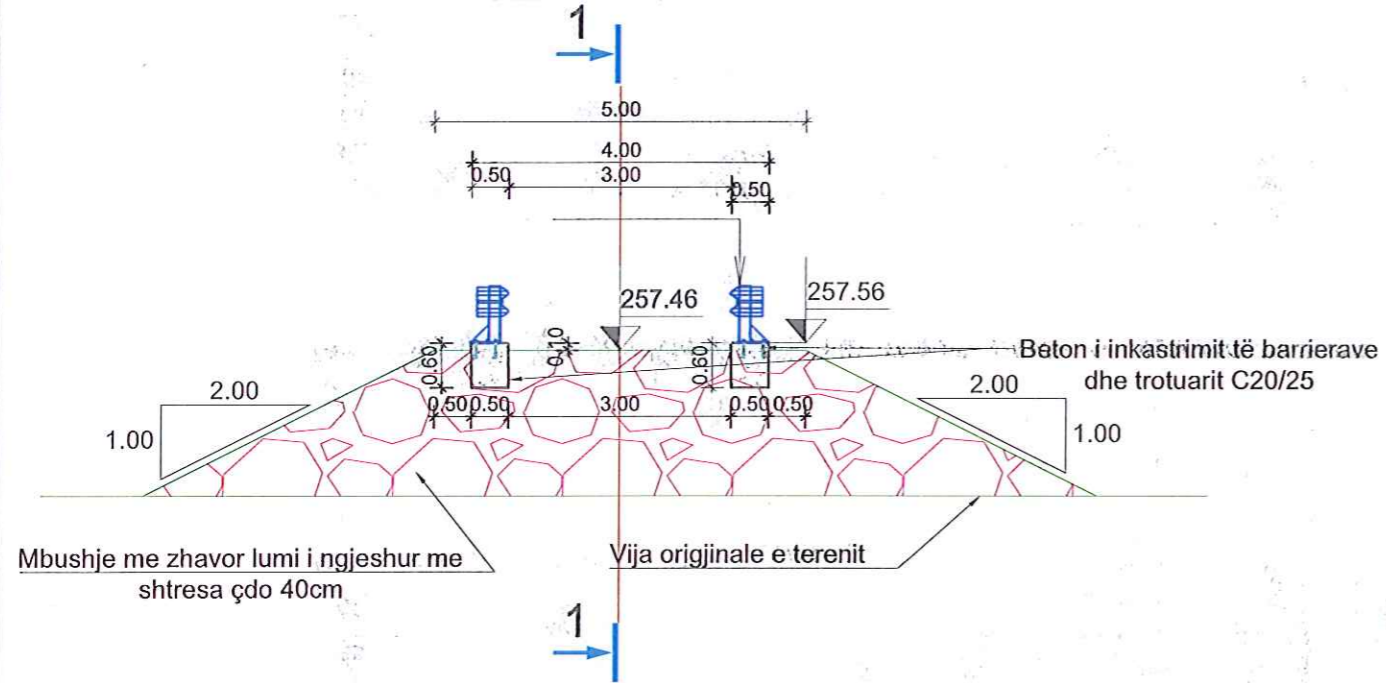
## Prerja D-D Sh. 1-100



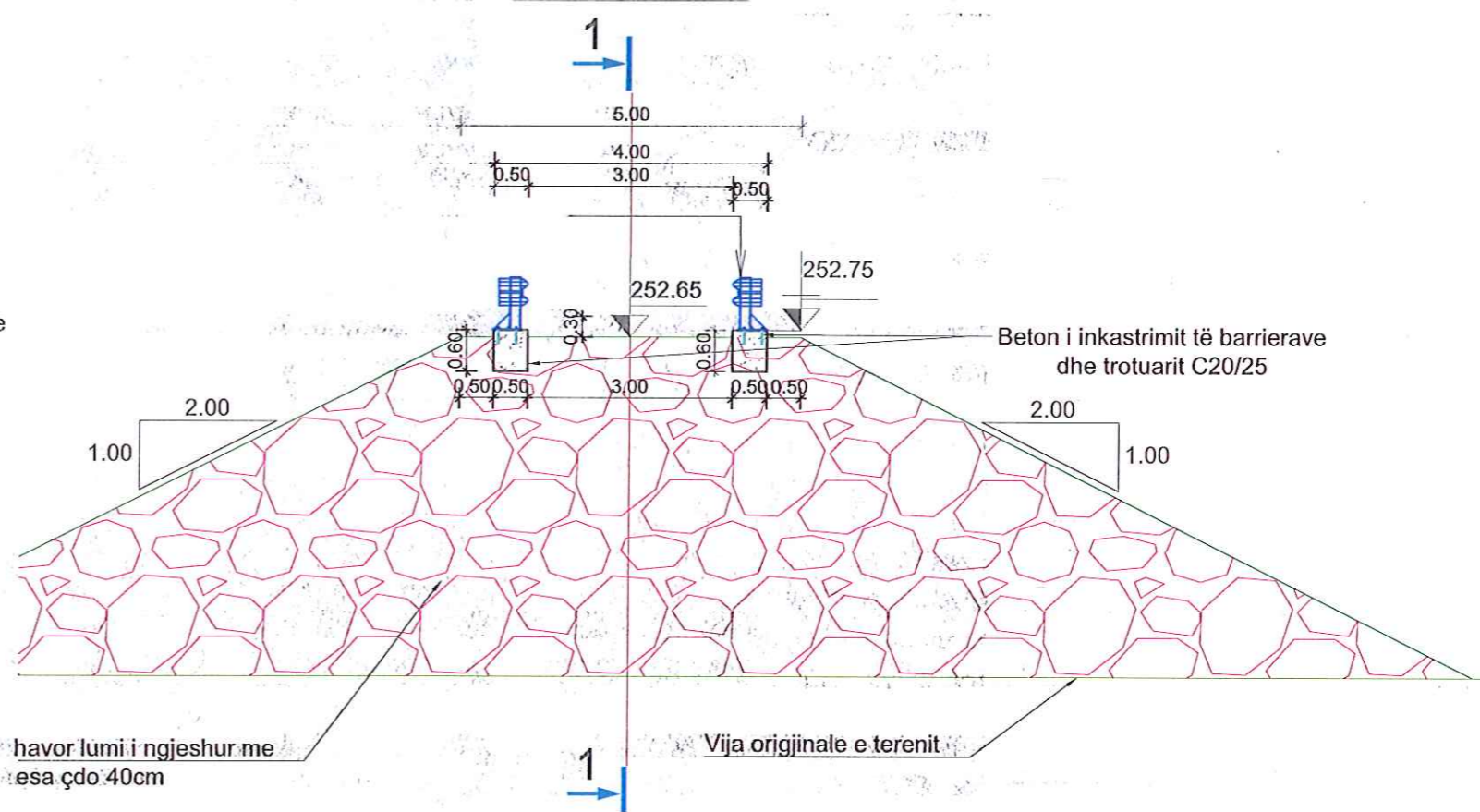
PUNOI:  
ING. EDION SHTYLLA

PRERJE TËRTHORE TË URËS TË KISHAVICES, Sh. 1:100 A3

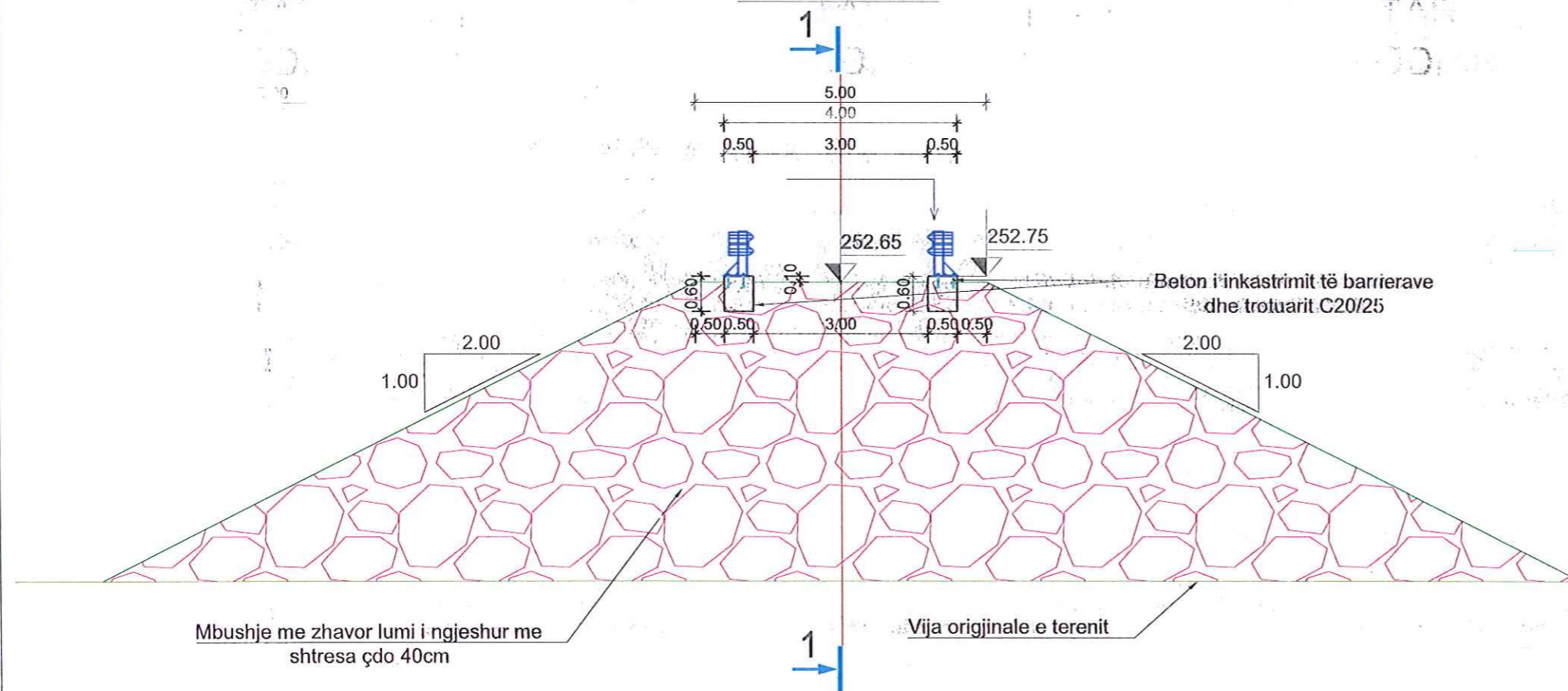
Prerja E-E  
Sh. 1-100



Prerja F-F  
Sh. 1-100



Prerja G-G  
Sh. 1-100

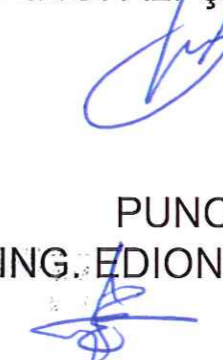


MIRATOHET  
KRYETARIBASHKISE  
KLODIAN TACE



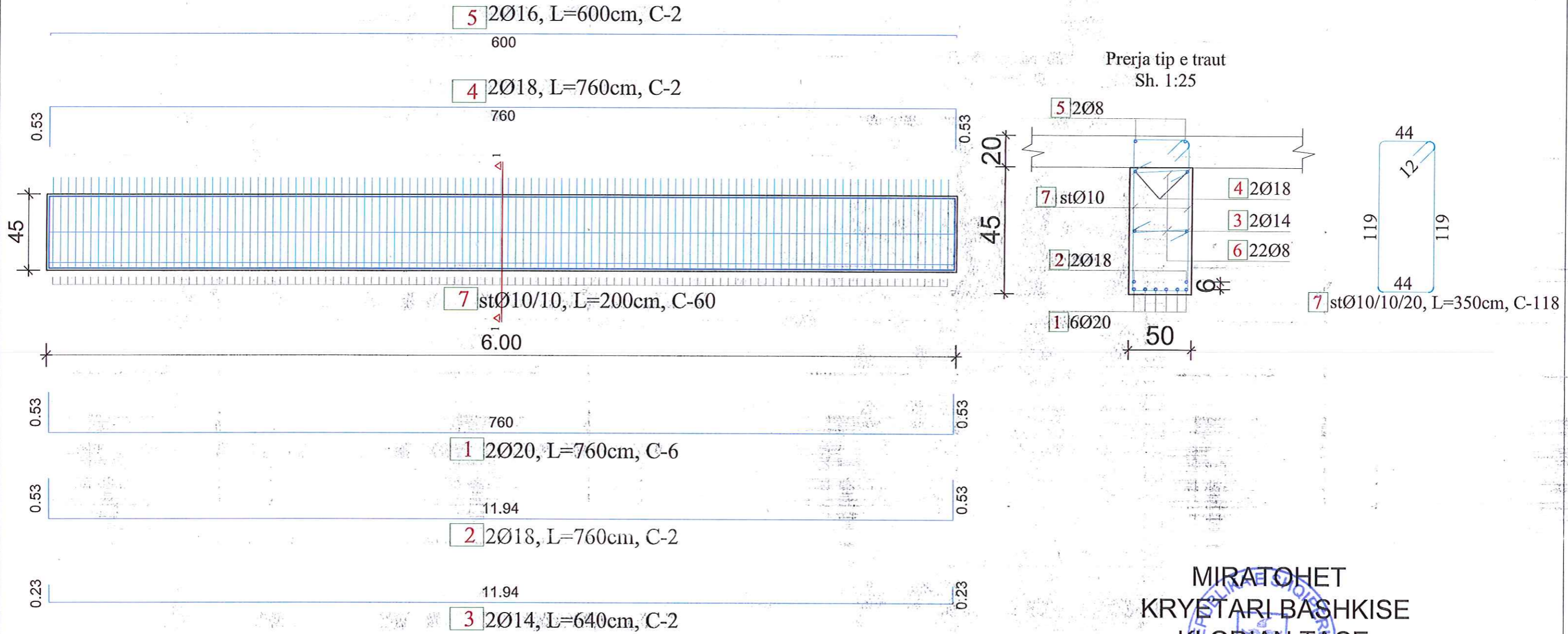
DREJTORIA E PLANIFIKIMIT TE TERRITORIT  
ING. ALI ÇOHODARI

PUNOI:  
ING. EDION SHTYLLA



ARMIMI I TRARËVE TË URËS TË KISHAVICES, SH. 1:50 A3 & 1:25A3

Armimi i trarëve të urës, Sh. 1-50



PUNOI:  
ING. EDION SHTYLLA

DREJTORIA E PLANIFIKIMIT TE TERRITORIT  
ING. ALI ÇOHODARI

MIRATOHET  
KRYETARI BASHKISE  
KLODIAN TAÇE

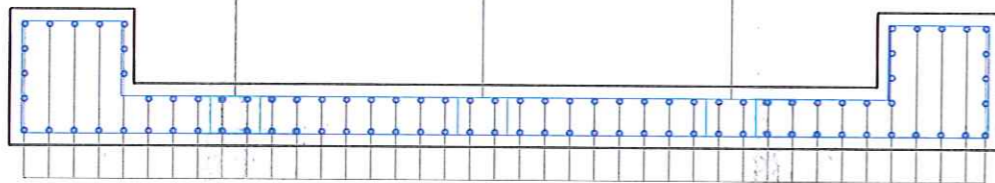
ARMIMI I SOLETËS DHE BORDURAVE NË ARGJINATURË TË URËS TË KISHAVICES, SH. 1:25 A3

Armimi i soletës të urës, Sh. 1-25

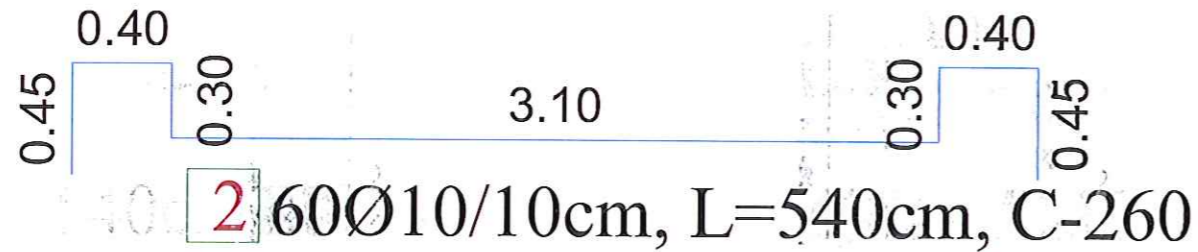
600

3 80Ø10/10cm, L=600cm, C-250

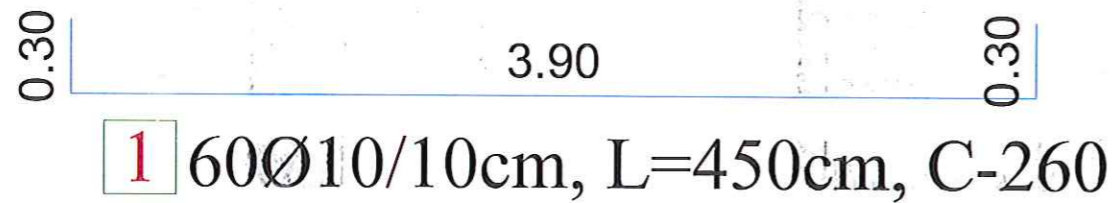
4 72Ø12/150cm, L=100cm, C-72



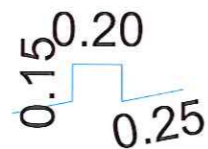
3 80Ø10/10cm, L=600cm, C-250



2 60Ø10/10cm, L=540cm, C-260

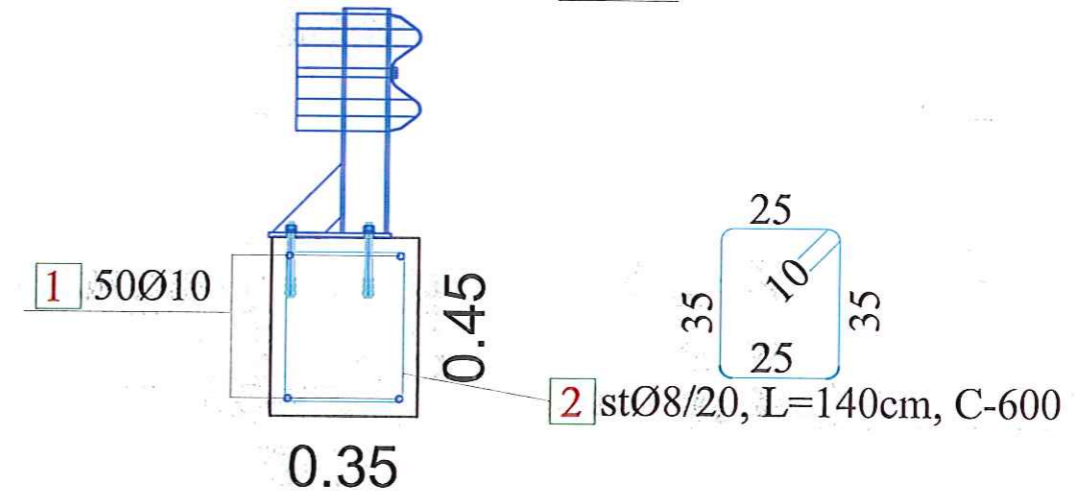


1 60Ø10/10cm, L=450cm, C-260



4 72Ø12/150cm, L=100cm, C-72

Armimi i bordurave për instalimin e Profileve mbajtes në argjinaturë, Sh. 1-25



1 50Ø10

2 stØ8/20, L=140cm, C-600

0.35

600

1 50Ø10, L=600cm, C-90

MIRATOHET  
KRYETARI BASHKISE  
KLODIAN TAÇE

DREJTORIA E PLANIFIKIMIT TE TERRITORIT  
ING. ALI ÇOHODARI

PUNOI:  
ING. EDION SHTYLLA