



MIRATOHET
KRYETARI I BASHKISË
Z. TONIN MARINAJ

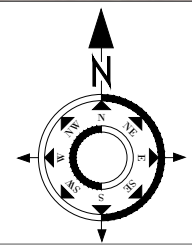
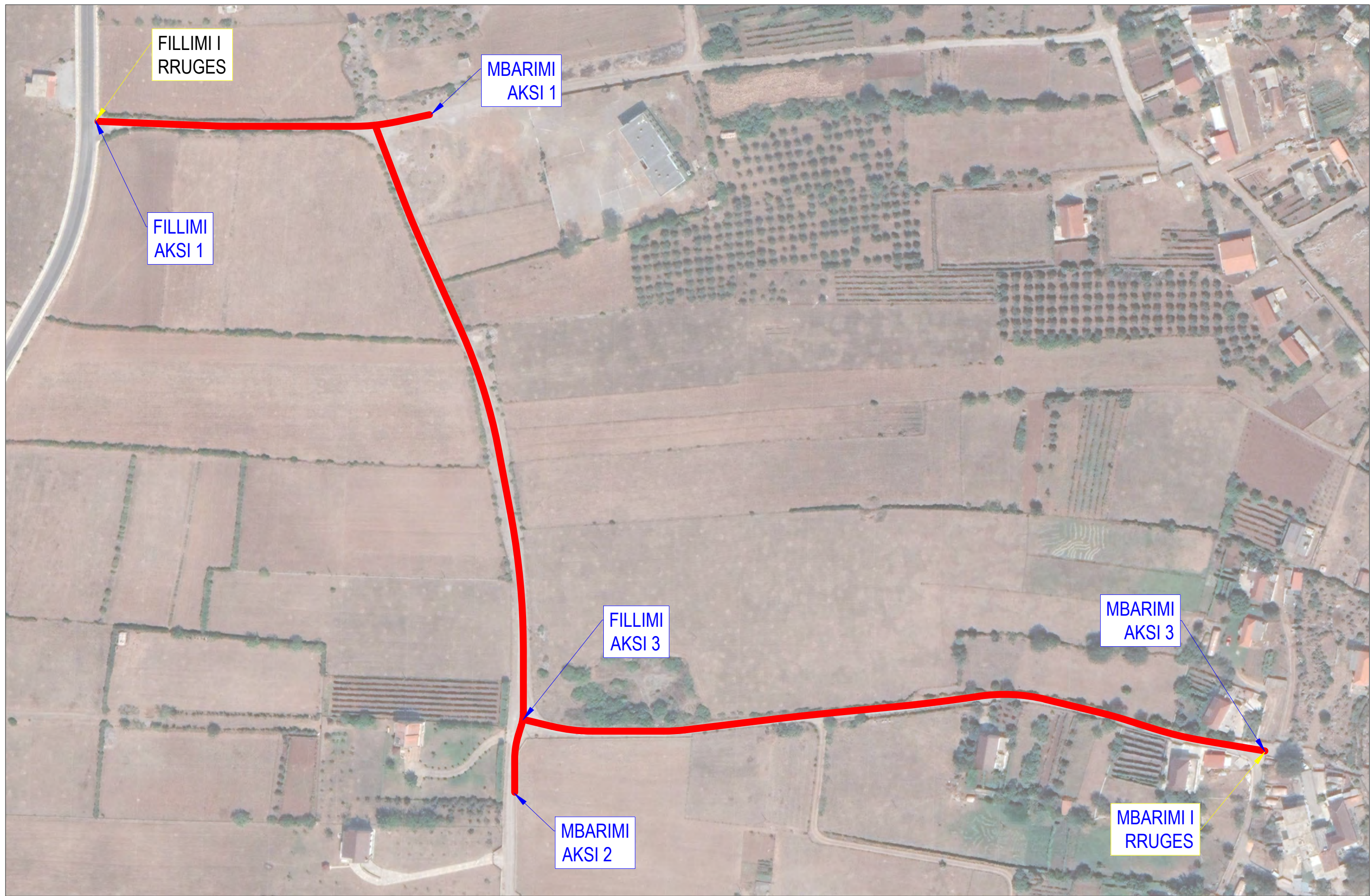
BASHKIA MALESI E MADHE
PROJEKT ZBATIMI

Sistemim asfaltim rruga Drekaj

- 1– Hoorografia
- 2– Topografia e rruges
- 3– Planimetria e rruges
- 4– Profili gjatësor
- 5– Profilat tërthore
- 6– Profili tërthore tip

PROJEKTOI:
"LENI-ING" SH.P.K

TIRANË 2023



| | | | |
|------------------------|--|---|-----------------------------|
| Porositi : | Projektoi: | Objekti: Sistemim asfaltim rruga Dreka | |
| BASHKIA MALESI E MADHE | "LENI-ING" sh.p.k Liçense: N.2969 | Faza: Projekt – Zbatim | |
| | Adresa: Rr. Uran Pano, Pallati 12 kat, Kati 2 Mobile: 0682042270 Email: leni-ing@hotmail.com | Emërtimi i Fletës: HOOROGRAIFA | Shkalla: Sh 1:200 |
| | | Tiranë 2023 HORO | |



MIRATOHET
KRYETARI I BASHKISË
Z. TONIN MARINAJ

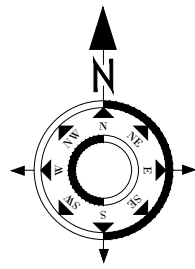
BASHKIA MALESI E MADHE
PROJEKT ZBATIMI

Sistemim Asfaltim rruga Veleçiku

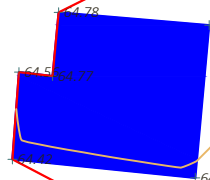
- 1– Hoorografia
- 2– Topografia e rruges
- 3– Planimetria e rruges
- 4– Profili gjatësor
- 5– Profilat tërthore
- 6– Profili tërthore tip

PROJEKTOI:
"LENI-ING" SH.P.K

TIRANË 2023



FILLIMI I RRUGES



FILLIMI AKSI 1

FILLIMI AKSI 2

MBARIMI AKSI 1

V -2-
 $R = 90.000\text{m}$
 $K = 19.129\text{m}$
 $Tg = 9.601\text{m}$
 $Bs = 0.511\text{m}$
 $\alpha = 12^\circ 10' 40.67''$
 $N = 4692373.66$
 $E = 4371845.17$

V -1-
 $R = 200.000\text{m}$
 $K = 7.768\text{m}$
 $Tg = 3.884\text{m}$
 $Bs = 0.038\text{m}$
 $\alpha = 2^\circ 13' 30.98''$
 $N = 4692373.68$
 $E = 4371779.63$

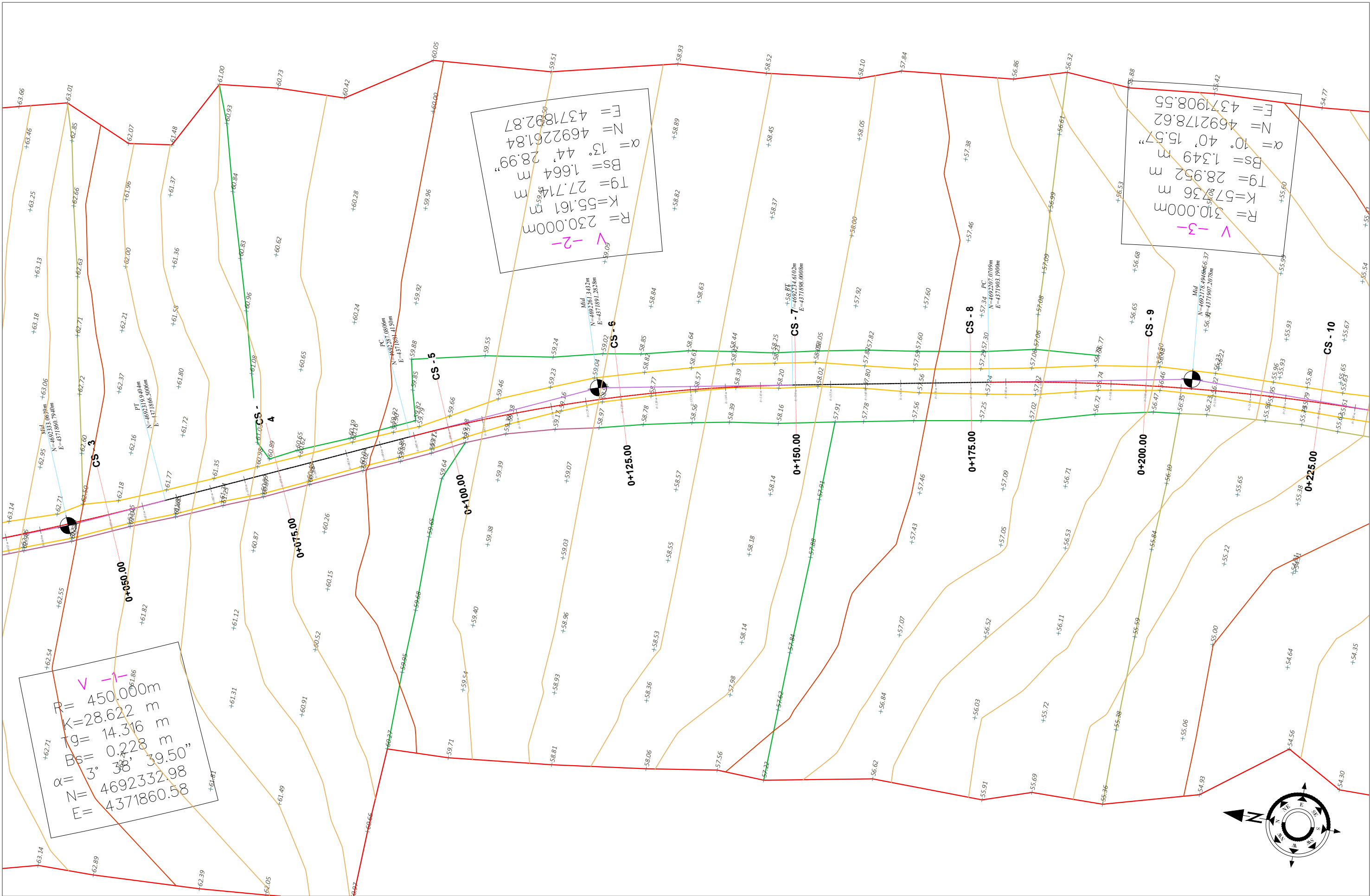
V -3-
 $R = 450.000\text{m}$
 $K = 28.622\text{m}$
 $Tg = 14.316\text{m}$
 $Bs = 0.228\text{m}$
 $\alpha = 7^\circ 58' 38.12''$
 $N = 4692373.68$
 $E = 4371779.63$

- SHPJEGUES**
- Pike detaje
 - Izohipse
 - Objekt
 - Kanal Natyral
 - Rrethim
 - Mur Rrethues

Porositi :
 BASHKIA MALESI E MADHE

Projektoi:
 "LENI-ING" sh.p.k
 Liçense: N.2969
 Adresa: Rr. Uran Pano, Pallati 12 kat, Kati 2
 Mobile: 0682042270
 Email: leni-ing@hotmail.com

Objekti: Sistemim asfaltim rruga Dreka
 Faza: Projekt - Zbatim
 Emërtimi i Fletës: TOPOGRAFIA E RRUGES
 Shkalla: Sh 1:500
 Tiranë 2023
 Topo



$R = 450.000\text{m}$
 $K = 28.622\text{ m}$
 $Tg = 14.316\text{ m}$
 $Bs = 0.228\text{ m}$
 $\alpha = 3^\circ 58' 39.50''$
 $N = 4692332.98$
 $E = 4371860.58$

$R = 230.000\text{m}$
 $K = 55.161\text{ m}$
 $Tg = 27.714\text{ m}$
 $Bs = 1.664\text{ m}$
 $\alpha = 13^\circ 44' 28.99''$
 $N = 4692261.84$
 $E = 4371892.87$

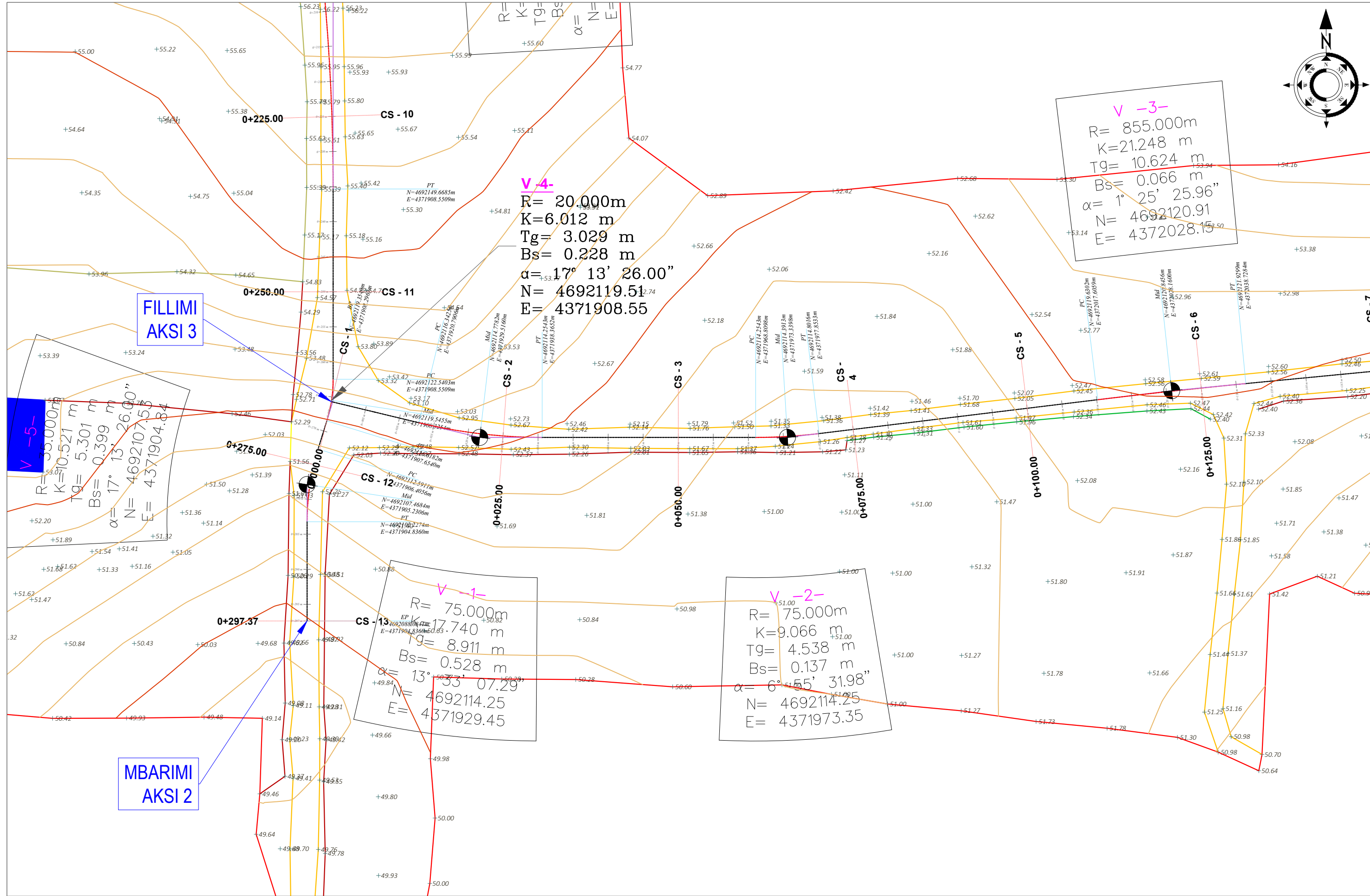
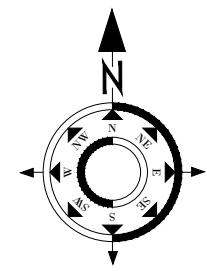
$R = 310.000\text{m}$
 $K = 57.36\text{ m}$
 $Tg = 28.952\text{ m}$
 $Bs = 1.349\text{ m}$
 $\alpha = 10^\circ 40' 15.57''$
 $N = 4692178.62$
 $E = 4371908.55$

- SHPJEGUES**
- 156.95 Pike detaje
 - 158.0 Izohipse
 - Objekt
 - Kanal Natyral
 - Rrethim
 - Mur Rrethues

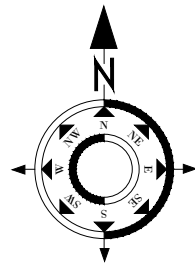
Porositi :
 BASHKIA
 MALESI E
 MADHE

Projektoji:
 "LENI-ING" sh.p.k
 Liçense: N.2969
 Adresa: Rr. Uran Pano, Pallati 12 kat, Kati 2
 Mobile: 0682042270
 Email: leni-ing@hotmail.com

| | | |
|--|-----------------------------|----------------------------|
| Objekti: Sistemim asfaltim rruga Dreka | | |
| Faza: Projekt – Zbatim | | |
| Emërtimi i Fletës: TOPOGRAFIA E RRUGES | Shkalla: Sh 1:500 | Tiranë 2023 Topo (2) |



| | | | | |
|--|--------------------------------------|--|--|----------------------|
| SHPJEGUES - 156.95 Pike detaje - 158.0 Izohipse - Objekt - Kanal Natyral - Rrethim - Mur Rrethues | Porositi : BASHKIA MALESI E MADHE | Projektoi: "LENI-ING" sh.p.k Liçense: N.2969 | Objekti: Sistemim asfaltim rruga Dreka | |
| | | Adresa: Rr. Uran Pano, Pallati 12 kat, Kati 2 Mobile: 0682042270 Email: leni-ing@hotmail.com | Emërtimi i Fletës: TOPOGRAFIJA E RRUGES | Shkalla: Sh 1:500 |
| | | | Faza: Projekt - Zbatim | |
| | | | Tiranë 2023 Topo (3) | |



V -5-
 R= 75.000m
 K=28.616 m
 Tg= 14.484 m
 Bs= 1.386 m
 $\alpha = 21^\circ 51' 39.11''$
 N= 4692131.31
 E= 4372118.40

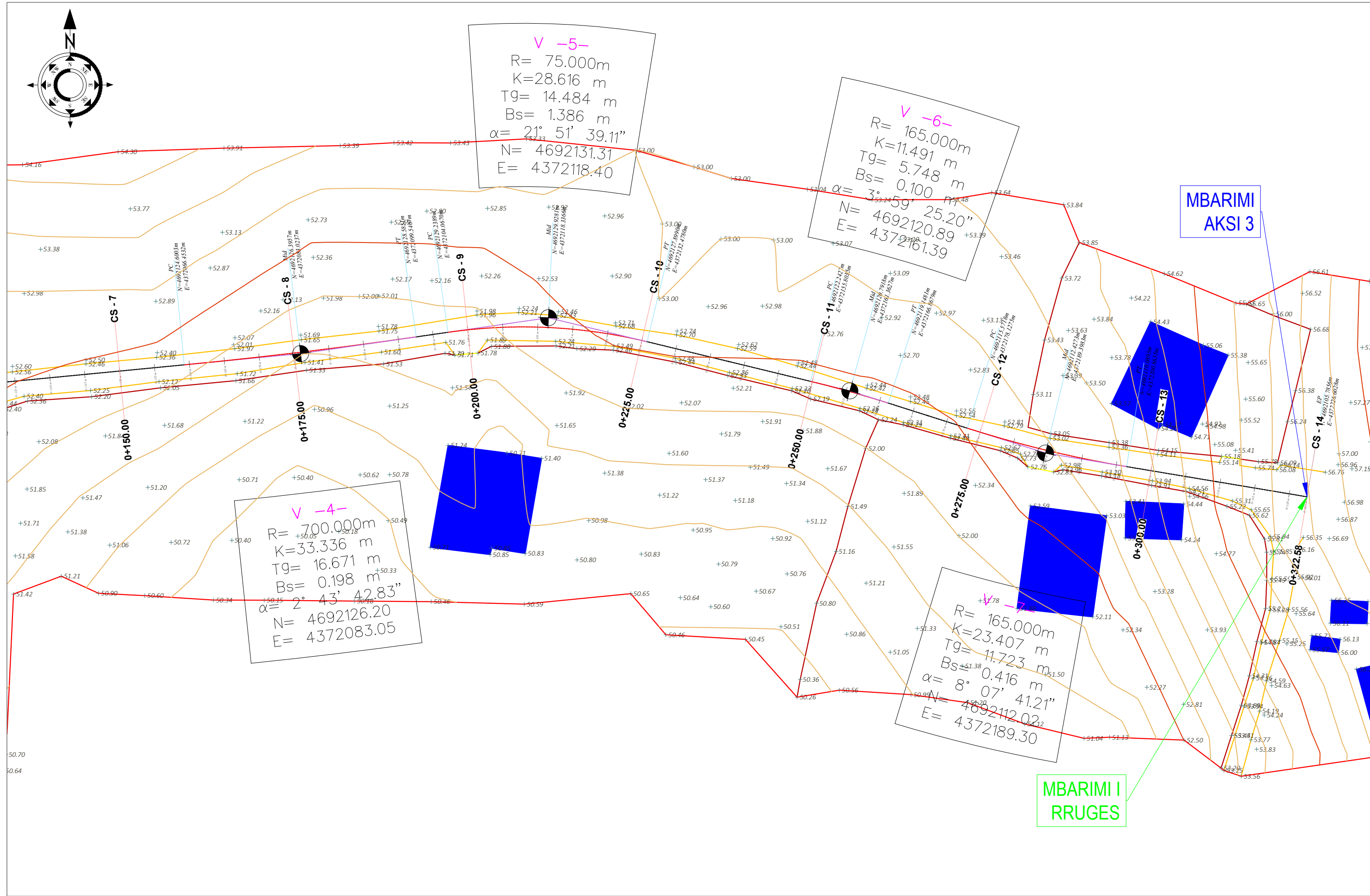
V -6-
 R= 165.000m
 K=11.491 m
 Tg= 5.748 m
 Bs= 0.100 m
 $\alpha = 3^\circ 59' 25.20''$
 N= 4692120.89
 E= 4372161.39

V -4-
 R= 700.000m
 K=33.336 m
 Tg= 16.671 m
 Bs= 0.198 m
 $\alpha = 2^\circ 43' 42.83''$
 N= 4692126.20
 E= 4372083.05

V -7-
 R= 165.000m
 K=23.407 m
 Tg= 11.723 m
 Bs= 0.416 m
 $\alpha = 8^\circ 07' 41.21''$
 N= 4692112.02
 E= 4372189.30

MBARIMI AKSI 3

MBARIMI I RRUGES



SHPJEGUES

- 156.95 Pike detaje
- 158.0 Izohipse
- Objekt
- Kanal Natyral
- Rrethim
- Mur Rrethues

Porositi :
 BASHKIA MALESI E MADHE

Projektoi:
 "LENI-ING" sh.p.k
 Liçense: N.2969
 Adresa: Rr. Uran Pano, Pallati 12 kat, Kati 2
 Mobile: 0682042270
 Email: leni-ing@hotmail.com

| | | |
|--|-----------------------------|-------------------------|
| Objekti: Sistemim asfaltim rruga Dreka | | |
| Faza: Projekt – Zbatim | | |
| Emërtimi i Fletës: TOPOGRAFIA E RRUGES | Shkalla: Sh 1:500 | Tiranë 2023 Topo (4) |



MIRATOHET
KRYETARI I BASHKISË
Z. TONIN MARINAJ

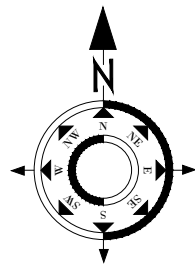
BASHKIA MALESI E MADHE
PROJEKT ZBATIMI

Sistemim asfaltim rruga Drekaj

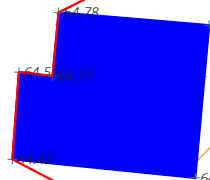
- 1– Hoorografia
- 2– Topografia e rruges
- 3– Planimetria e rruges
- 4– Profili gjatësor
- 5– Profilat tërthore
- 6– Profili tërthore tip

PROJEKTOI:
"LENI-ING" SH.P.K

TIRANË 2023



FILLIMI I RRUGES



FILLIMI AKSI 1

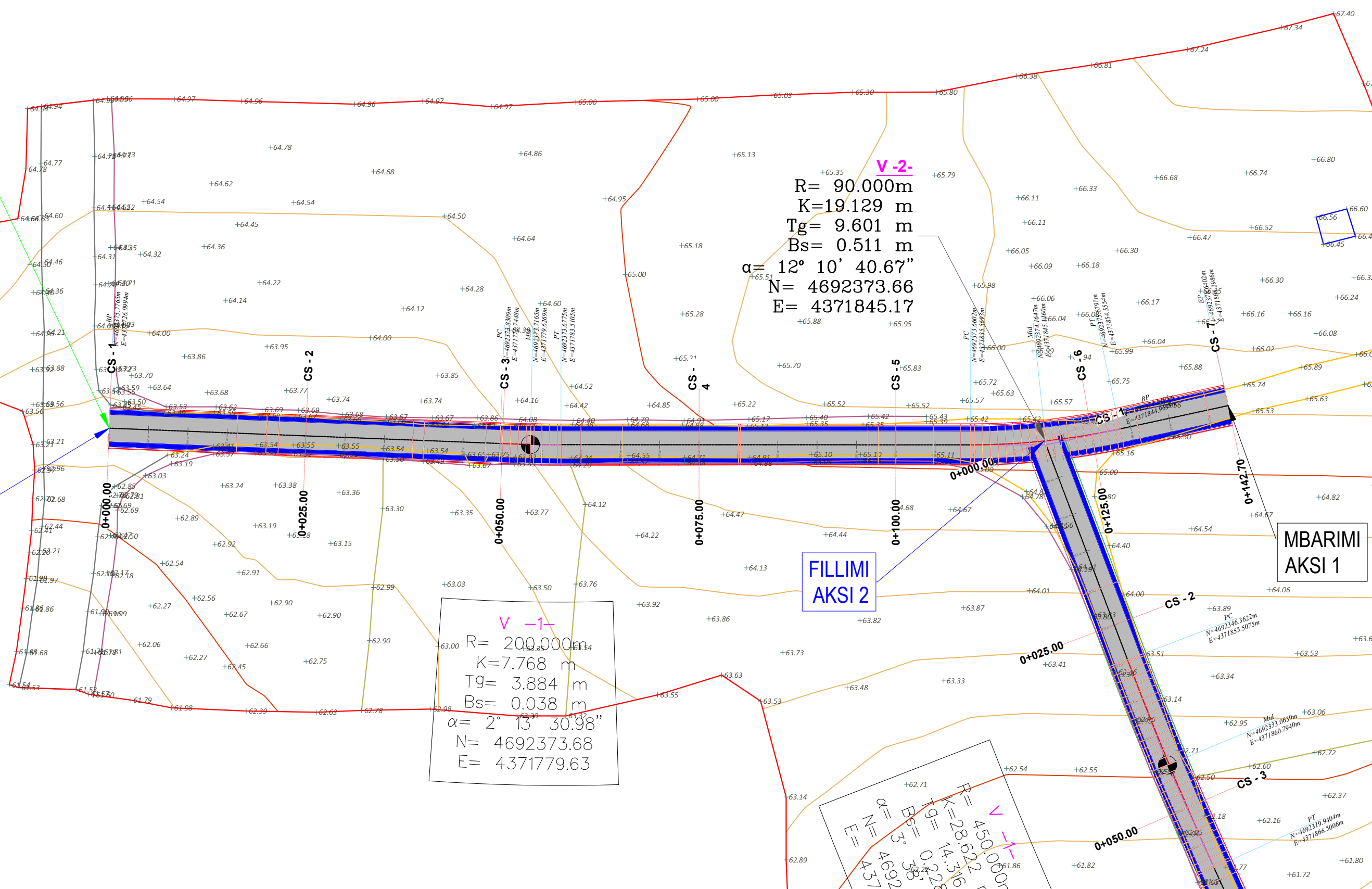
FILLIMI AKSI 2

MBARIMI AKSI 1

V -2-
 $R= 90.000\text{m}$
 $K=19.129\text{ m}$
 $Tg= 9.601\text{ m}$
 $Bs= 0.511\text{ m}$
 $\alpha= 12^{\circ} 10' 40.67''$
 $N= 4692373.66$
 $E= 4371845.17$

V -1-
 $R= 200.000\text{m}$
 $K=7.768\text{ m}$
 $Tg= 3.884\text{ m}$
 $Bs= 0.038\text{ m}$
 $\alpha= 2^{\circ} 13' 30.98''$
 $N= 4692373.68$
 $E= 4371779.63$

$R= 450.000\text{m}$
 $K=28.622\text{ m}$
 $Tg= 14.316\text{ m}$
 $Bs= 0.228\text{ m}$
 $\alpha= 7^{\circ} 58' 38.12''$
 $N= 4692373.68$
 $E= 4371779.63$

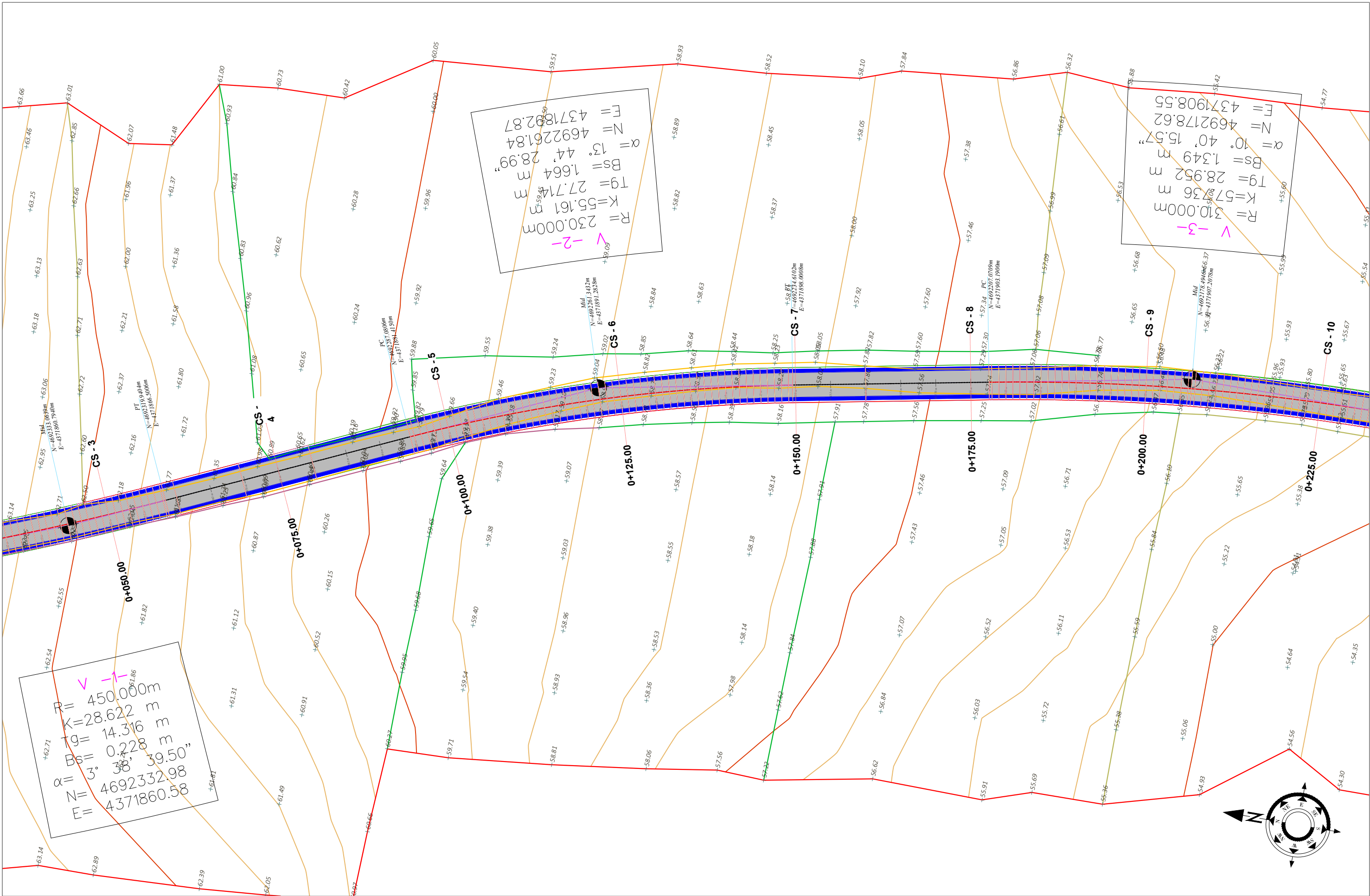


- SHPJEGUES**
- 156.95 Pike detaje
 - 158.0 Izohipse
 - Objekt
 - Kanal Natyral
 - Rrethim
 - Mur Rrethues

Porositi :
 BASHKIA MALESI E MADHE

Projektoi:
 "LENI-ING" sh.p.k
 Liçense: N.2969
 Adresa: Rr. Uran Pano, Pallati 12 kat, Kati 2
 Mobile: 0682042270
 Email: leni-ing@hotmail.com

| | | |
|--|----------------------|-------------------|
| Objekti: Sistemim asfaltim rruga Dreka | | |
| Faza: Projekt - Zbatim | | |
| Emërtimi i Fletës: PLANIMETRIA E RRUGES | Shkalla: Sh 1:500 | Tiranë 2023 PL |



$R = 450.000\text{m}$
 $K = 28.622\text{ m}$
 $Tg = 14.316\text{ m}$
 $Bs = 0.228\text{ m}$
 $\alpha = 3^\circ 58' 39.50''$
 $N = 4692332.98$
 $E = 4371860.58$

$R = 230.000\text{m}$
 $K = 55.161\text{ m}$
 $Tg = 27.714\text{ m}$
 $Bs = 1.664\text{ m}$
 $\alpha = 13^\circ 44' 28.99''$
 $N = 4692261.84$
 $E = 4371892.87$

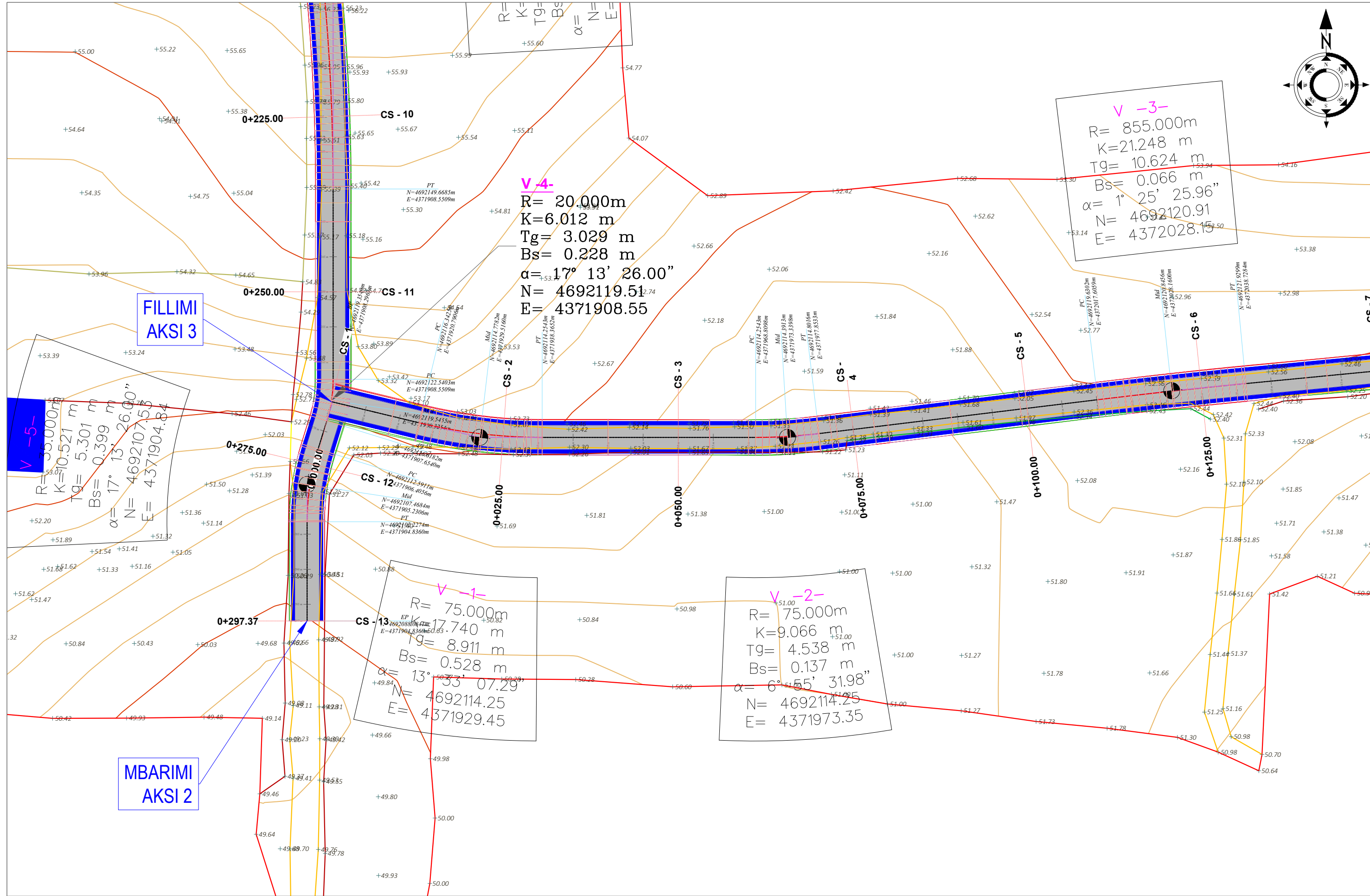
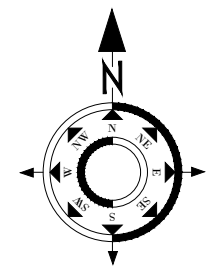
$R = 310.000\text{m}$
 $K = 57.36\text{ m}$
 $Tg = 28.952\text{ m}$
 $Bs = 1.349\text{ m}$
 $\alpha = 10^\circ 40' 15.57''$
 $N = 4692178.62$
 $E = 4371908.55$

- SHPJEGUES**
- 156.95 Pike detaje
 - 158.0 Izohipse
 - Objekt
 - Kanal Natyral
 - Rrethim
 - Mur Rrethues

Porositi :
 BASHKIA
 MALESI E
 MADHE

Projektoi:
 "LENI-ING" sh.p.k
 Liçense: N.2969
 Adresa: Rr. Uran Pano, Pallati 12 kat, Kati 2
 Mobile: 0682042270
 Email: leni-ing@hotmail.com

| | | |
|--|----------|------------------|
| Objekti: Sistemim asfaltim rruga Dreka | | |
| Faza: | | Projekt – Zbatim |
| Emërtimi i Fletës: | Shkalla: | Tiranë 2023 |
| TOPOGRAFIA E RRUGES | Sh 1:500 | PL 2 |



FILLIMI
AKSI 3

MBARIMI
AKSI 2

V -3-
 $R = 855.000\text{m}$
 $K = 21.248\text{ m}$
 $Tg = 10.624\text{ m}$
 $Bs = 0.066\text{ m}$
 $\alpha = 1^\circ 25' 25.96''$
 $N = 4692120.91$
 $E = 4372028.15$

V -4-
 $R = 20.000\text{m}$
 $K = 6.012\text{ m}$
 $Tg = 3.029\text{ m}$
 $Bs = 0.228\text{ m}$
 $\alpha = 17^\circ 13' 26.00''$
 $N = 4692119.51$
 $E = 4371908.55$

V -5-
 $R = 55.000\text{m}$
 $K = 10.521\text{ m}$
 $Tg = 5.301\text{ m}$
 $Bs = 0.399\text{ m}$
 $\alpha = 17^\circ 13' 26.00''$
 $N = 4692107.53$
 $E = 4371904.84$

V -1-
 $R = 75.000\text{m}$
 $K = 17.740\text{ m}$
 $Tg = 8.911\text{ m}$
 $Bs = 0.528\text{ m}$
 $\alpha = 13^\circ 33' 07.29''$
 $N = 4692114.25$
 $E = 4371929.45$

V -2-
 $R = 75.000\text{m}$
 $K = 9.066\text{ m}$
 $Tg = 4.538\text{ m}$
 $Bs = 0.137\text{ m}$
 $\alpha = 6^\circ 55' 31.98''$
 $N = 4692114.25$
 $E = 4371973.35$

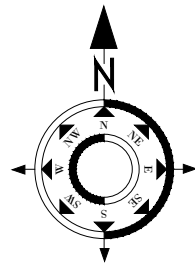
SHPJEGUES

- 156.95 Pike detaje
- 158.0 Izohipse
- Objekt
- Kanal Natyral
- Rrethim
- Mur Rrethues

Porositi :
 BASHKIA
 MALESI E
 MADHE

Projektoi:
 "LENI-ING" sh.p.k
 Liçense: N.2969
 Adresa: Rr. Uran Pano, Pallati 12 kat, Kati 2
 Mobile: 0682042270
 Email: leni-ing@hotmail.com

| | | |
|--|----------------------|------------------------|
| Objekti: Sistemim asfaltim rruga Dreka | | |
| Faza: Projekt – Zbatim | | |
| Emërtimi i Fletës: TOPOGRAFIA E RRUGES | Shkalla: Sh 1:500 | Tiranë 2023 PL 3 |



V -5-
 R= 75.000m
 K=28.616 m
 Tg= 14.484 m
 Bs= 1.386 m
 $\alpha = 21^\circ 51' 39.11''$
 N= 4692131.31
 E= 4372118.40

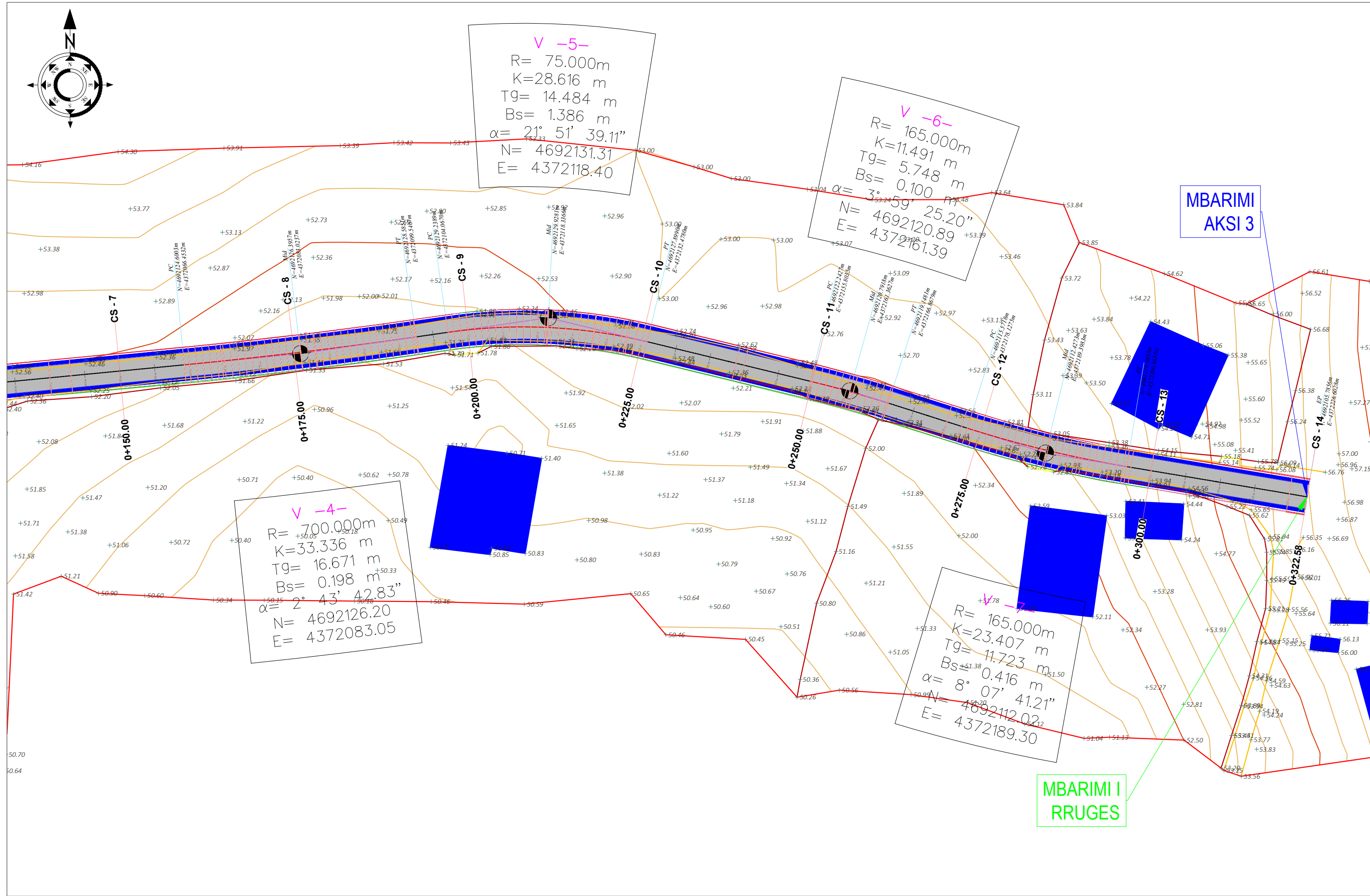
V -6-
 R= 165.000m
 K=11.491 m
 Tg= 5.748 m
 Bs= 0.100 m
 $\alpha = 3^\circ 59' 25.20''$
 N= 4692120.89
 E= 4372161.39

V -4-
 R= 700.000m
 K=33.336 m
 Tg= 16.671 m
 Bs= 0.198 m
 $\alpha = 2^\circ 43' 42.83''$
 N= 4692126.20
 E= 4372083.05

V -7-
 R= 165.000m
 K=23.407 m
 Tg= 11.723 m
 Bs= 0.416 m
 $\alpha = 8^\circ 07' 41.21''$
 N= 4692112.02
 E= 4372189.30

MBARIMI AKSI 3

MBARIMI I RRUGES



SHPJEGUES

| | | |
|--|--------|----------------------|
| | 156.95 | Pike detaje |
| | 158.0 | Izohipse |
| | | Objekt |
| | | Kanal Natyral |
| | | Rrethim |
| | | Mur Rrethues |

Porositi :
 BASHKIA
 MALESI E
 MADHE

Projektoi:
 "LENI-ING" sh.p.k
 Liçense: N.2969
 Adresa: Rr. Uran Pano, Pallati 12 kat, Kati 2
 Mobile: 0682042270
 Email: leni-ing@hotmail.com

| | | |
|--|-----------------------------|--------------------------------|
| Objekti: Sistemim asfaltim rruga Dreka | | |
| Faza: Projekt - Zbatim | | |
| Emërtimi i Fletës: TOPOGRAFIA E RRUGES | Shkalla: Sh 1:500 | Tiranë 2023 PL 4 |



MIRATOHET
KRYETARI I BASHKISË
Z. TONIN MARINAJ

BASHKIA MALESI E MADHE
PROJEKT ZBATIMI

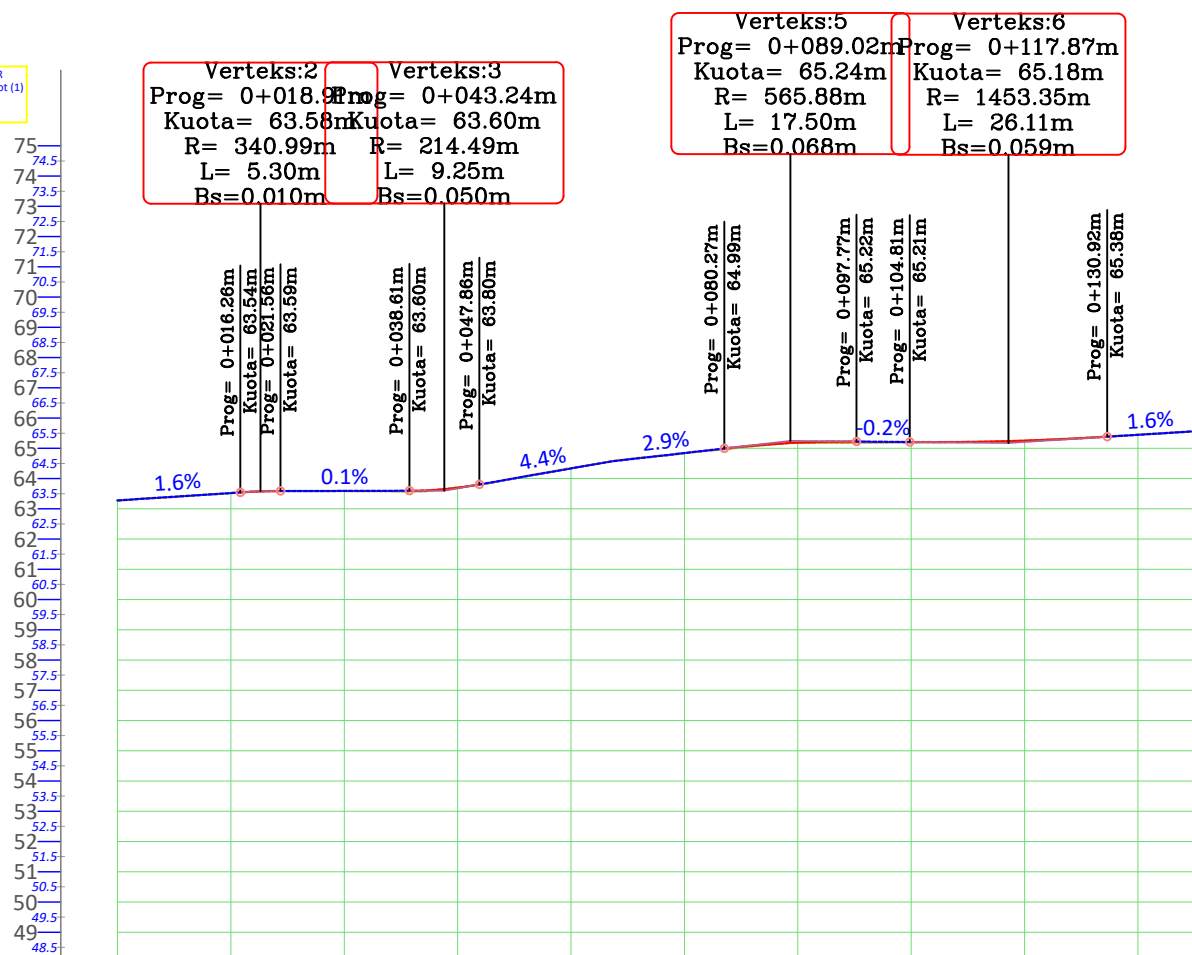
Sistemim asfaltim rruga Drekaj

- 1– Hoorografia
- 2– Topografia e rruges
- 3– Planimetria e rruges
- 4– Profili gjatësor
- 5– Profilat tërthore
- 6– Profili tërthore tip

PROJEKTOI:
"LENI-ING" SH.P.K

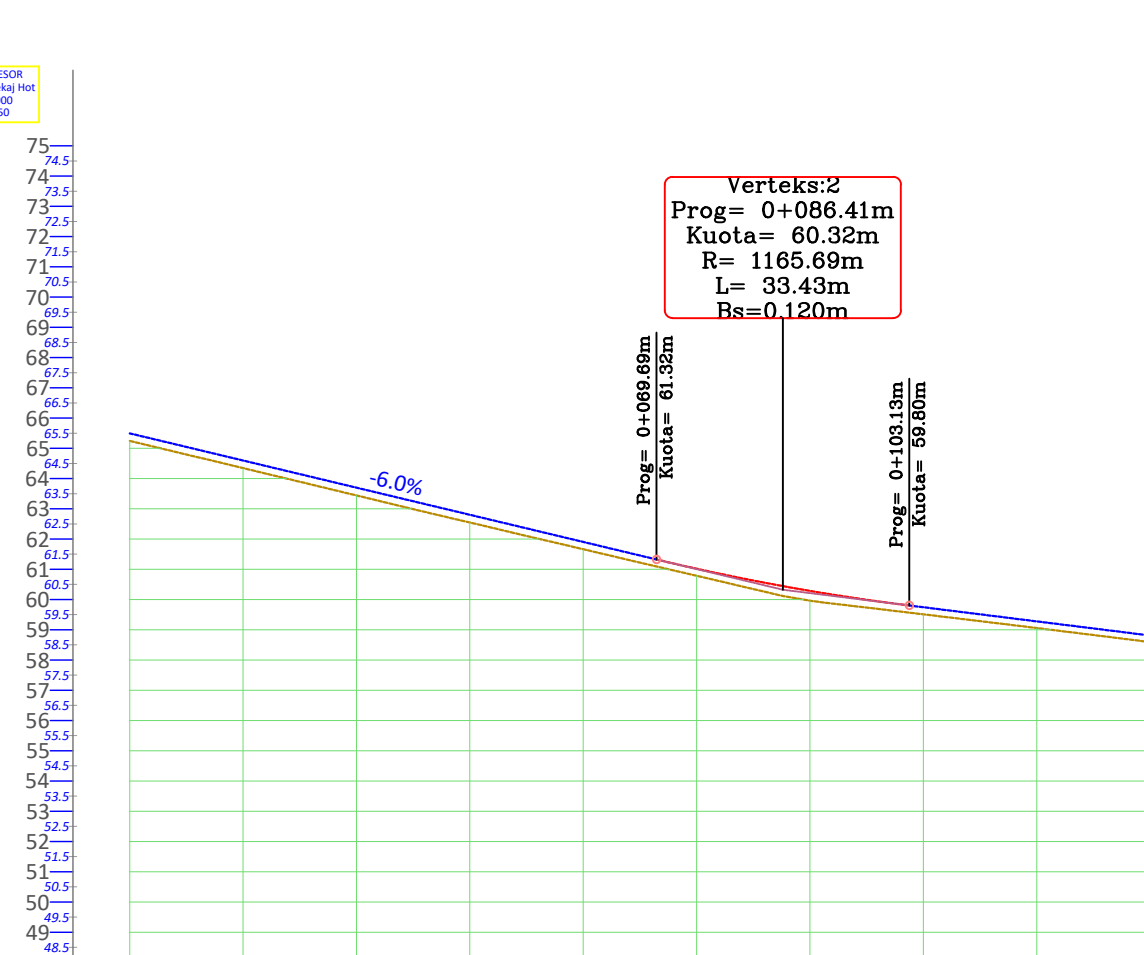
TIRANË 2023

PROFILI GJATESOR
Aksi 1 Rruga Drekaç Hot (1)
SH_H - 1:1000
SH_V - 1:250



| NR I PRERJES | CS - 1 | CS - 2 | CS - 3 | CS - 4 | CS - 5 | CS - 6 | CS - 7 |
|-------------------|--------|--|--|---|---|---|---|
| DIST. PJESORE | | 25.0 m | 25.0 m | 25.0 m | 25.0 m | 25.0 m | 17.7 m |
| DIST. PROGRESIVE | 0+000 | 0+025 | 0+050 | 0+075 | 0+100 | 0+125 | 0+143 |
| KUOTA TOKES | 63.28 | 63.59 | 63.89 | 64.84 | 65.19 | 65.31 | 65.57 |
| KUOTA PROJEKTIT | 63.28 | 63.59 | 63.90 | 64.84 | 65.22 | 65.30 | 65.57 |
| KUOTA PUNES | 0.00 | 0.00 | 0.01 | 0.01 | 0.03 | -0.01 | 0.00 |
| GJEO. VERTIKALE | | $i = 1.62\%$ $R = 340.99$ $K = 5.30$ | $i = 0.07\%$ $R = 214.49$ $K = 9.25$ | $i = 4.38\%$ $R = 17.43$ $K = 1.86\%$ | $i = 2.86\%$ $R = 565.88$ $K = 17.50$ | $i = -0.23\%$ $R = 1453.35$ $K = 26.11$ | $i = 1.56\%$ $R = 11.78$ $K = 1.56\%$ |
| GJEO. HORIZONTALE | | $L = 49.68$ | $\varphi = 2^{\circ}13'31''$ $L = 7.77$ $R = 200.00$ | $L = 52.06$ | $\varphi = 12^{\circ}10'41''$ $L = 19.13$ $R = 90.00$ | $L = 14.06$ | |
| KILOMETRAZI | 0+01 | | 0+05 | | 0+10 | | 0+15 |

PROFILI GJATESOR
Aksi 2 Rruga Drekaç Hot
SH_H - 1:1000
SH_V - 1:250



| NR I PRERJES | CS - 1 | CS - 2 | CS - 3 | CS - 4 | CS - 5 | CS - 6 |
|-------------------|--------|------------------------------|---|------------------------------|--------|--|
| DIST. PJESORE | | 25.0 m | 25.0 m | 25.0 m | 25.0 m | 25.0 m |
| DIST. PROGRESIVE | 0+000 | 0+025 | 0+050 | 0+075 | 0+100 | 0+125 |
| KUOTA TOKES | 65.24 | 63.74 | 62.25 | 60.79 | 59.66 | 58.90 |
| KUOTA PROJEKTIT | 65.49 | 64.00 | 62.50 | 61.02 | 59.91 | 59.12 |
| KUOTA PUNES | 0.25 | 0.26 | 0.25 | 0.23 | 0.25 | 0.22 |
| GJEO. VERTIKALE | | $L = 69.69$ $i = -5.98\%$ | | $R = 1165.69$ $K = 33.43$ | | |
| GJEO. HORIZONTALE | | $L = 29.72$ | $\varphi = 3^{\circ}38'39''$ $L = 28.62$ $R = 450.00$ | $L = 36.09$ | | $\varphi = 13^{\circ}44'29''$ $L = 55.16$ $R = 230.00$ |
| KILOMETRAZI | 0+01 | | 0+05 | | 0+10 | |

Porositi :
BASHKIA MALESI E MADHE

Projektoi:
"LENI-ING" sh.p.k
Liçense: N.2969

Adresa: Rr. Uran Pano, Pallati 12 kat, Kati 2
Mobile: 0682042270
Email: leni-ing@hotmail.com

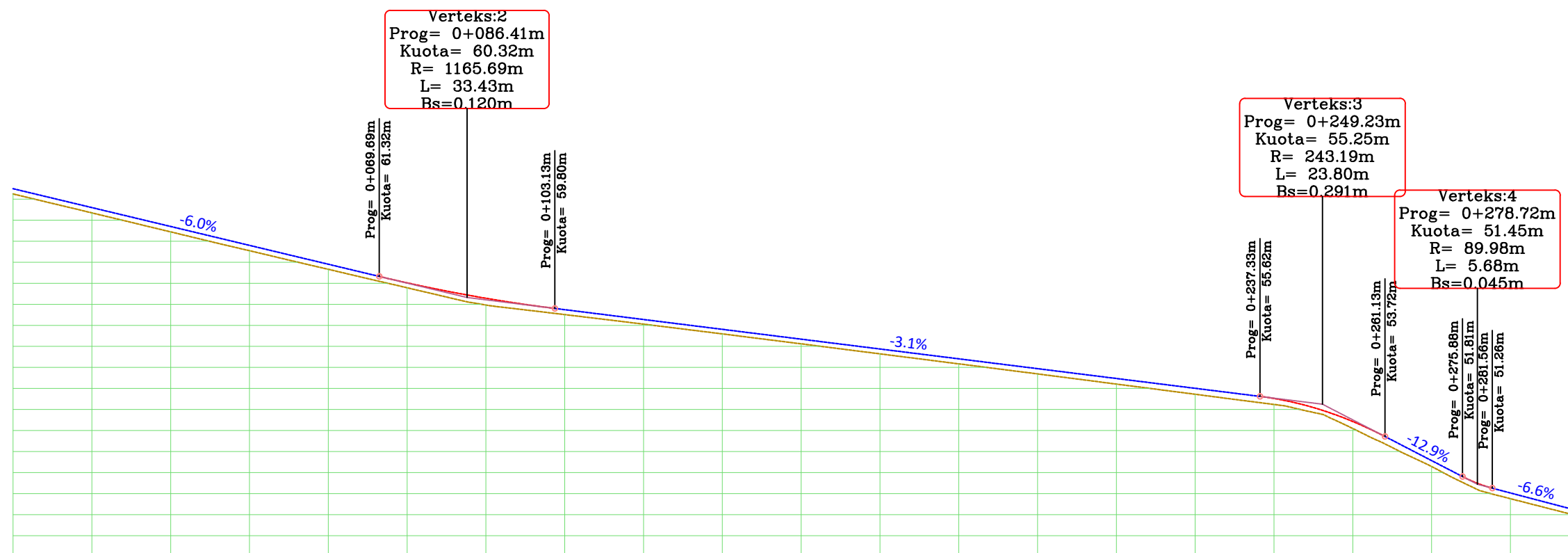
Objekti: Sistemim asfaltim rruga Drekaç

Faza: Projekt - Zbatim

Emërtimi i Fletës: PROFILI GJATESORE
Shkalla: 1:1000
1:250
Tiranë 2023
PGJ

PROFILI GJATESOR
Aksi 2 Rruga DrekaJ Hot
SH_H - 1:1000
SH_V - 1:250

75
74.5
74
73.5
73
72.5
72
71.5
71
70.5
70
69.5
69
68.5
68
67.5
67
66.5
66
65.5
65
64.5
64
63.5
63
62.5
62
61.5
61
60.5
60
59.5
59
58.5
58
57.5
57
56.5
56
55.5
55
54.5
54
53.5
53
52.5
52
51.5
51
50.5
50
49.5
49
48.5



| NR I PRERJES | CS -1 | CS -2 | CS -3 | CS -4 | CS -5 | CS -6 | CS -7 | CS -8 | CS -9 | CS -10 | CS -11 | CS -12 | CS -13 | | |
|-------------------|-------|-------------------------|---|--------------------------|---------|--|--------|---------|--|--------|--------------------------|--|-------------------------------------|---|--|
| DIST. PJESORE | | 25.0 m | 25.0 m | 25.0 m | 25.0 m | 25.0 m | 25.0 m | 25.0 m | 25.0 m | 25.0 m | 25.0 m | 22.4 m | | | |
| DIST. PROGRESIVE | | 0+000 | 0+025 | 0+050 | 0+075 | 0+100 | 0+125 | 0+150 | 0+175 | 0+200 | 0+225 | 0+250 | 0+297 | | |
| KUOTA TOKES | | 65.24 | 63.74 | 62.25 | 60.79 | 59.66 | 58.90 | 58.12 | 57.33 | 56.53 | 55.72 | 54.68 | 49.97 | | |
| KUOTA PROJEKTIT | | 65.49 | 64.00 | 62.50 | 61.02 | 59.91 | 59.12 | 58.34 | 57.56 | 56.79 | 56.01 | 54.90 | 50.22 | | |
| KUOTA PUNES | | 0.25 | 0.26 | 0.25 | 0.23 | 0.25 | 0.22 | 0.22 | 0.24 | 0.25 | 0.28 | 0.21 | 0.25 | | |
| GJEO. VERTIKALE | | L = 69.69 i = -5.98% | | R = 1165.69 K = 33.43 | | L = 134.20 i = -3.12% | | | R = 243.19 K = 23.80 | | L = 14.20 i = -12.90% | | R = 89.98 K = 5.68 i = -6.59% | | |
| GJEO. HORIZONTALE | | L=29.72 | φ = 3°38'39" L = 28.62 R = 450.00 | | L=36.09 | φ = 13°44'29" L = 55.16 R = 230.00 | | L=28.02 | φ = 10°40'16" L = 57.74 R = 310.00 | | L=27.13 | φ = 17°13'26" L = 6.01 R = 20.00 | | φ = 17°13'26" L = 10.52 R = 35.00 | |
| KILOMETRAZHI | -0.01 | | 0.05 | | 0.10 | | 0.15 | | 0.20 | | 0.25 | | 0.30 | 0.31 | |

Porositi :
BASHKIA
MALESI E
MADHE

Projektoi:
"LENI-ING" sh.p.k
Liçense: N.2969

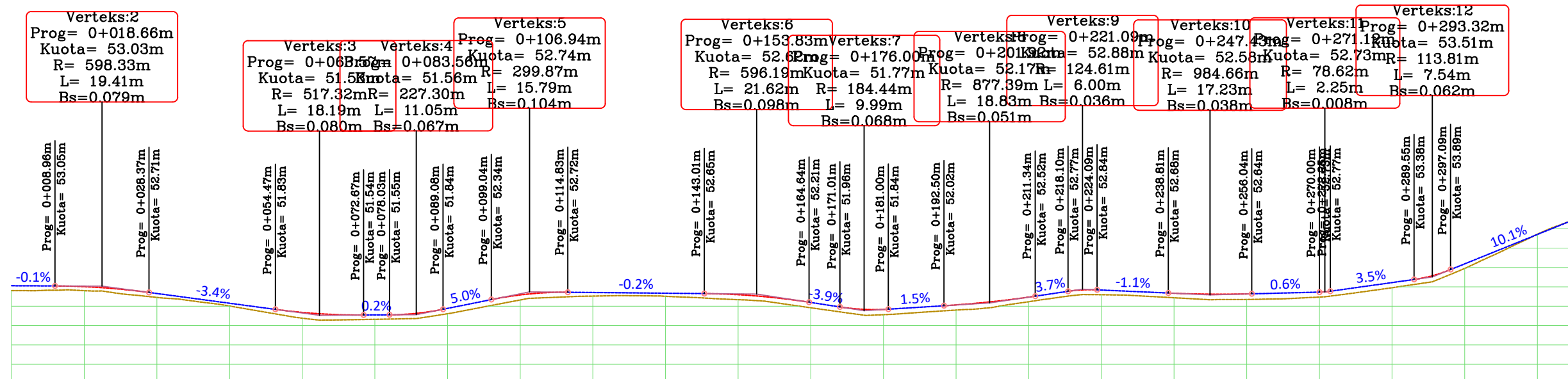
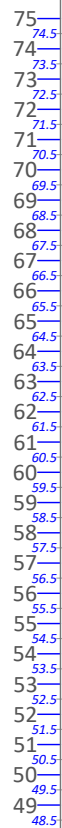
Adresa: Rr. Uran Pano, Pallati 12 kat, Kati 2
Mobile: 0682042270
Email: leni-ing@hotmail.com

Objekti: RIKONSTRUKSIONI RRUGA "DREKAJ HOT"

Faza: Projekt - Zbatim

Emërtimi i Fletës: PROFILI GJATESORE
Shkalla: 1:1000
1:250
Tiranë 2023
PGJ
(2)

PROFILI GJATESOR
Aksi 3 Rruga Drekaç Hot
SH_H - 1:1000
SH_V - 1:250



| | | | | | | | | | | | | | | | | | | | | | | | |
|-------------------|--------|-------------------|-------------------------------------|---------------------|-----------------------------------|---------------------|-------------------------------------|---------------------|-------------------------------------|---------------------|-------------------------------------|--------------------|-------------------------------------|---------------------|-------------------------------------|--------------------|---------------------|---------------------|--------------------|-------------------|--------------------|--------------------|---------------------|
| NR I PRERJES | CS - 1 | CS - 2 | CS - 3 | CS - 4 | CS - 5 | CS - 6 | CS - 7 | CS - 8 | CS - 9 | CS - 10 | CS - 11 | CS - 12 | CS - 13 | CS - 14 | | | | | | | | | |
| DIST. PJESORE | | 25.0 m | 25.0 m | 25.0 m | 25.0 m | 25.0 m | 25.0 m | 25.0 m | 25.0 m | 25.0 m | 25.0 m | 25.0 m | 25.0 m | 22.6 m | | | | | | | | | |
| DIST. PROGRESIVE | | +0+000 | +0+025 | +0+050 | +0+075 | +0+100 | +0+125 | +0+150 | +0+175 | +0+200 | +0+225 | +0+250 | +0+275 | +0+300 | +0+323 | | | | | | | | |
| KUOTA TOKES | | 52.80 | 52.58 | 51.79 | 51.32 | 52.08 | 52.54 | 52.34 | 51.57 | 51.87 | 52.34 | 52.34 | 52.61 | 53.95 | 56.47 | | | | | | | | |
| KUOTA PROJEKTTIT | | 53.05 | 52.81 | 51.98 | 51.55 | 52.39 | 52.69 | 52.59 | 51.85 | 52.17 | 52.83 | 52.62 | 52.87 | 54.19 | 56.47 | | | | | | | | |
| KUOTA PUNES | | 0.25 | 0.23 | 0.19 | 0.23 | 0.30 | 0.15 | 0.26 | 0.28 | 0.30 | 0.24 | 0.28 | 0.26 | 0.23 | 0.00 | | | | | | | | |
| GJEO. VERTIKALE | | L=8.9 i=-0.13% | R=598.33 K=19.41 | L=26.10 i=-3.35% | R=517.32 K=18.19 | R=227.30 K=11.05 | L=9.96 i=5.03% | R=299.87 K=15.79 | L=28.18 i=-0.24% | R=596.19 K=21.62 | L=6.6 i=-3.82% | R=184.44 K=9.99 | L=11.50 i=1.55% | R=877.39 K=18.83 | L=12.4 i=1.16% | R=124.61 K=6.00 | L=14.72 i=-1.12% | R=984.66 K=17.23 | L=13.95 i=0.63% | R=78.62 K=2.25 | L=17.30 i=3.50% | R=113.81 K=7.54 | L=25.49 i=10.12% |
| GJEO. HORIZONTALE | | L=12.85 | φ = 13°33'07" L=17.74 R=75.00 | L=30.44 | φ = 6°55'32" L=9.07 R=75.00 | L=40.04 | φ = 1°25'26" L=21.25 R=855.00 | L=27.85 | φ = 2°43'43" L=33.34 R=700.00 | L=4.57 | φ = 21°51'39" L=28.62 R=75.00 | L=24.00 | φ = 3°59'25" L=11.49 R=165.00 | L=11.81 | φ = 8°07'41" L=23.41 R=165.00 | L=26.10 | | | | | | | |
| KILOMETRAZHI | 0+001 | | 0+05 | | 0+10 | | 0+15 | | 0+20 | | 0+25 | | 0+30 | 0+34 | | | | | | | | | |

| | | |
|--|--|---|
| Porositi : BASHKIA MALESI E MADHE | Projektoi: "LENI-ING" sh.p.k Liçense: N.2969 | Objekti: Sistemim asfaltim rruga Drekaç |
| Adresa: Rr. Uran Pano, Pallati 12 kat, Kati 2 Mobile: 0682042270 Email: leni-ing@hotmail.com | | Faza: Projekt - Zbatim |
| Emërtimi i Fletës: PROFILI GJATESORE | Shkalla: 1:1000 1:250 | Tiranë 2023 PGJ (3) |



MIRATOHET
KRYETARI I BASHKISË
Z. TONIN MARINAJ

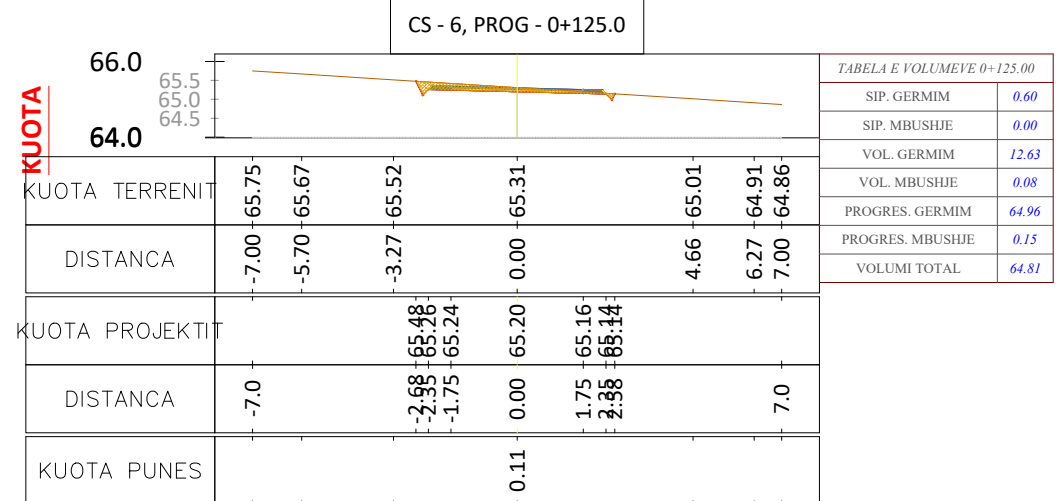
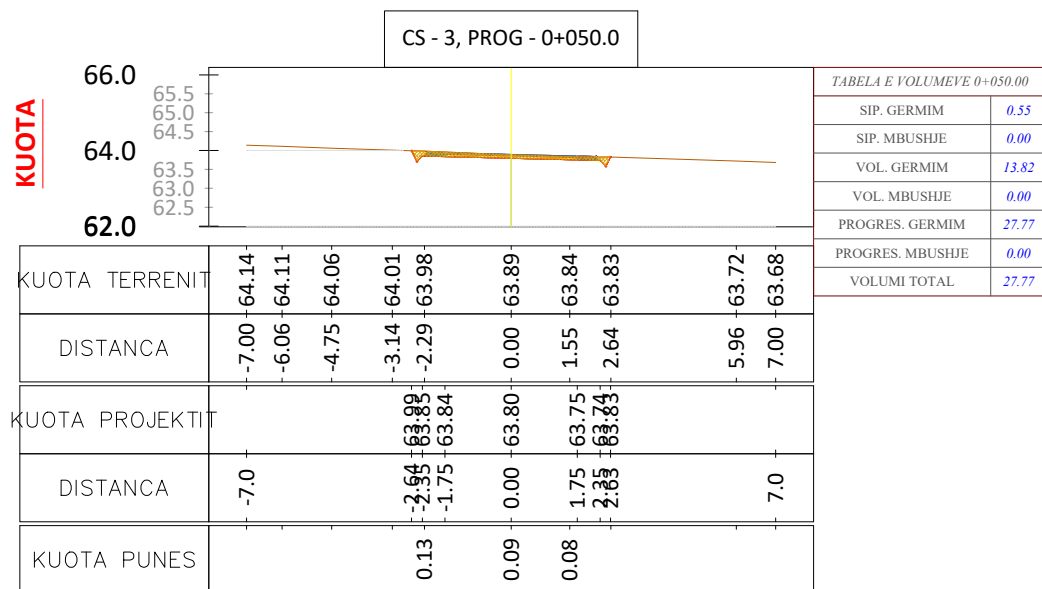
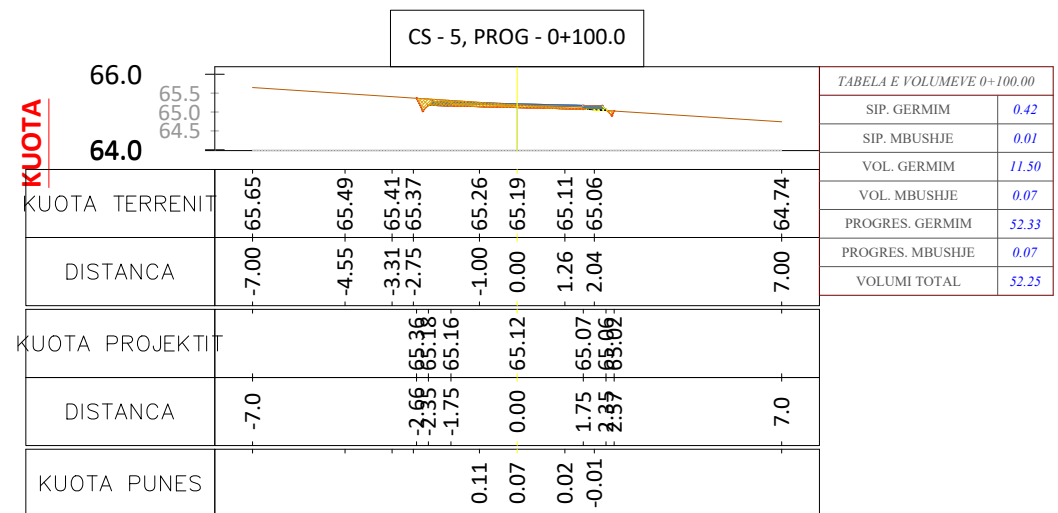
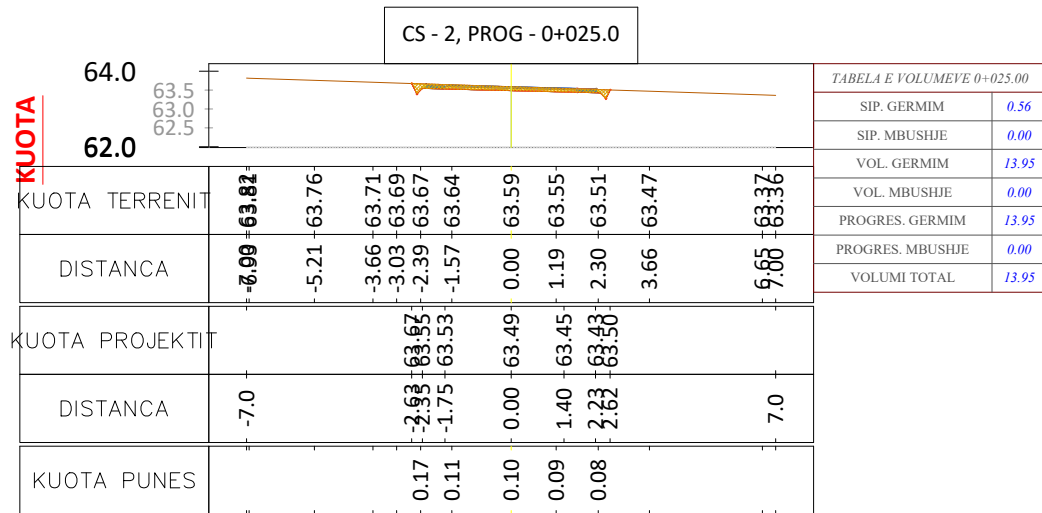
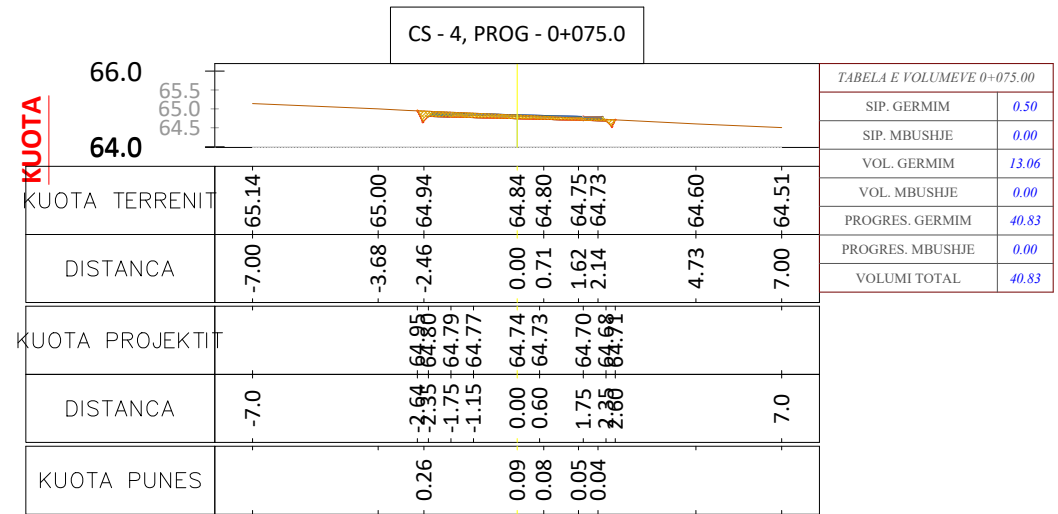
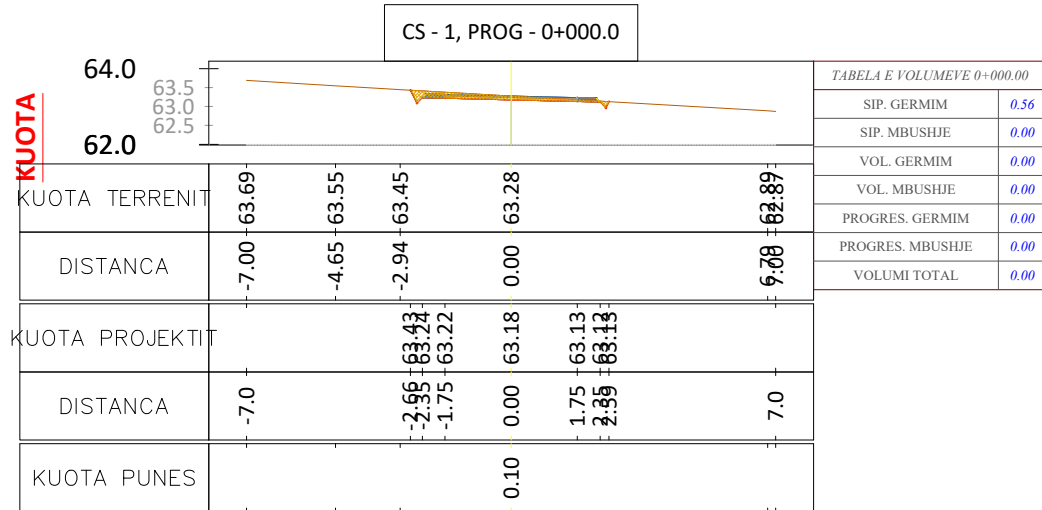
BASHKIA MALESI E MADHE
PROJEKT ZBATIMI

Sistemim asfaltim rruga Drekaj

- 1– Hoorografia
- 2– Topografia e rruges
- 3– Planimetria e rruges
- 4– Profili gjatësor
- 5– Profilat tërthore
- 6– Profili tërthore tip

PROJEKTOI:
"LENI-ING" SH.P.K

TIRANË 2023



Porositi :
BASHKIA
MALESI E
MADHE

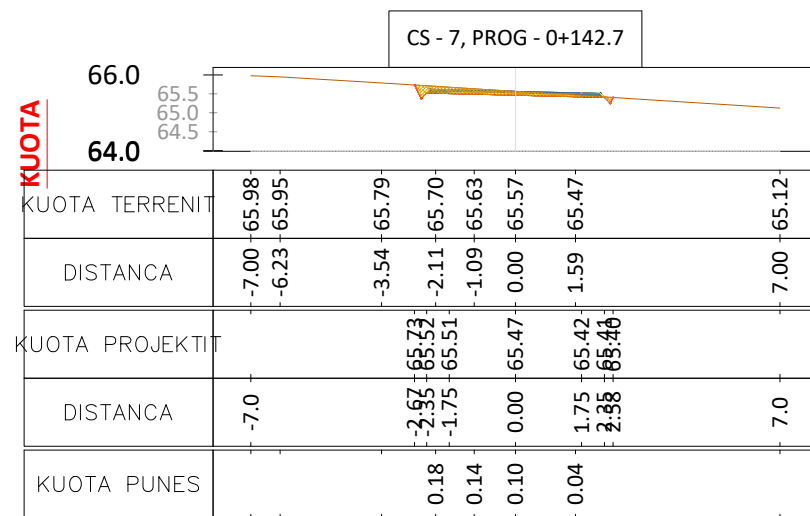
Projektoi:
"LENI-ING" sh.p.k
Liçense: N.2969

Adresa: Rr. Uran Pano, Pallati 12 kat, Kati 2
Mobile: 0682042270
Email: leni-ing@hotmail.com

Objekti: Sistemim asfaltim rruga Dreka

Faza: Projekt – Zbatim

Emërtimi i Fletës: PROFILAT TERTHORE
Shkalla: Sh 1:200
Tiranë 2023
PTTH



| | |
|------------------|-------|
| SIP. GERMIM | 0.56 |
| SIP. MBUSHJE | 0.00 |
| VOL. GERMIM | 10.19 |
| VOL. MBUSHJE | 0.00 |
| PROGRES. GERMIM | 75.15 |
| PROGRES. MBUSHJE | 0.15 |
| VOLUMI TOTAL | 75.00 |

| PROGRESIVA | SIP. GERMIM | SIP. MBUSHJE | VOL. GERMIM | VOL. MBUSHJE | G. PROGRESIV | M. PROGRESIV | G-M |
|------------|-------------|--------------|-------------|--------------|--------------|--------------|-------|
| 0+00.00 | 0.56 | 0.00 | 0.00 | 0.00 | 0.00 | 0.00 | 0.00 |
| 0+25.00 | 0.56 | 0.00 | 13.95 | 0.00 | 13.95 | 0.00 | 13.95 |
| 0+50.00 | 0.55 | 0.00 | 13.82 | 0.00 | 27.77 | 0.00 | 27.77 |
| 0+75.00 | 0.50 | 0.00 | 13.06 | 0.00 | 40.83 | 0.00 | 40.83 |
| 1+00.00 | 0.42 | 0.01 | 11.50 | 0.07 | 52.33 | 0.07 | 52.25 |
| 1+25.00 | 0.60 | 0.00 | 12.63 | 0.08 | 64.96 | 0.15 | 64.81 |
| 1+42.70 | 0.56 | 0.00 | 10.19 | 0.00 | 75.15 | 0.15 | 75.00 |

Porositi :
BASHKIA
MALESI E
MADHE

Projektoi:
"LENI-ING" sh.p.k
Liçense: N.2969

Adresa: Rr. Uran Pano, Pallati 12 kat, Kati 2
Mobile: 0682042270
Email: leni-ing@hotmail.com

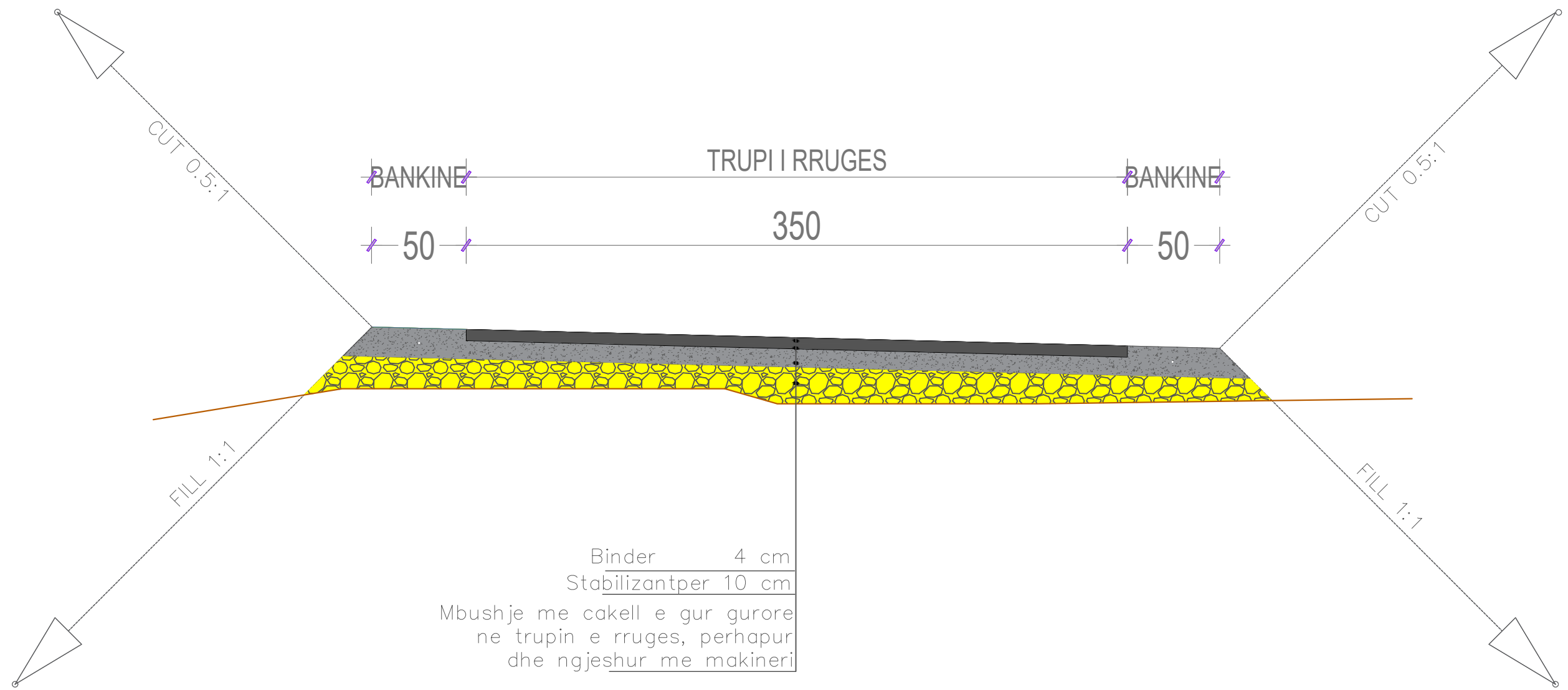
Objekti: BASHKIA MALESI E MADHE "DREKAJ HOT"

Faza: Projekt - Zbatim

Emërtimi i Fletës:
PROFILAT
TERTHORE

Shkalla:
Sh 1:200

Tiranë 2023
PTTH
(1)

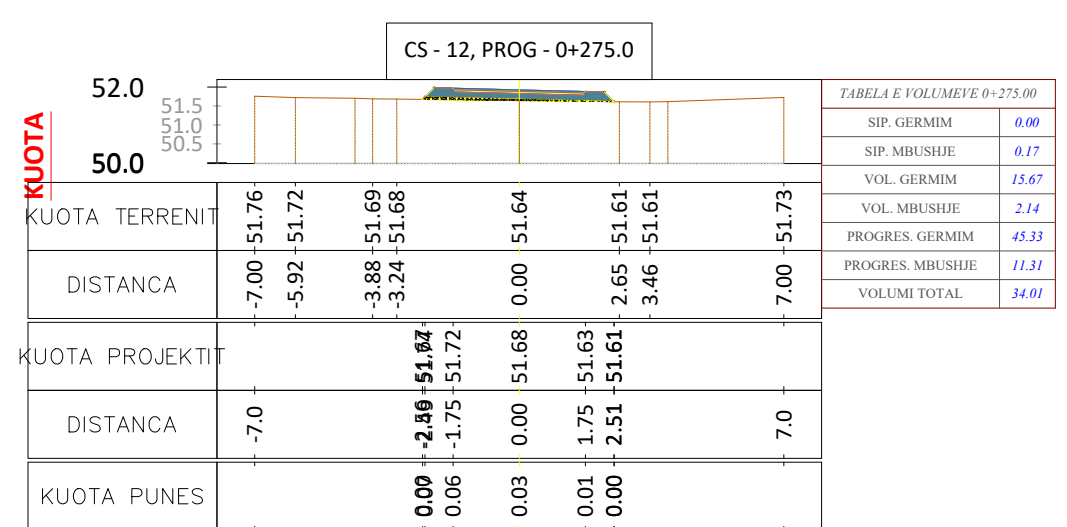
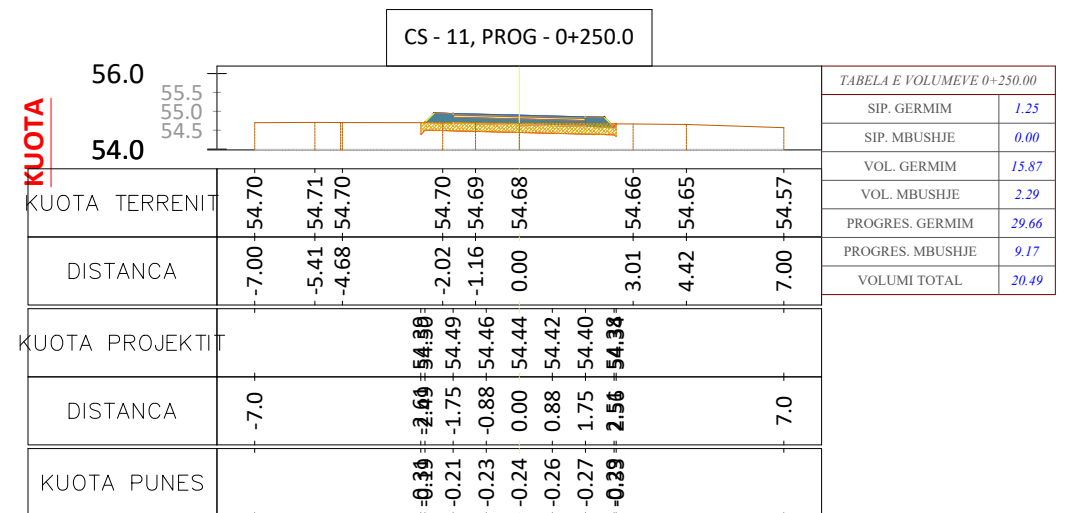
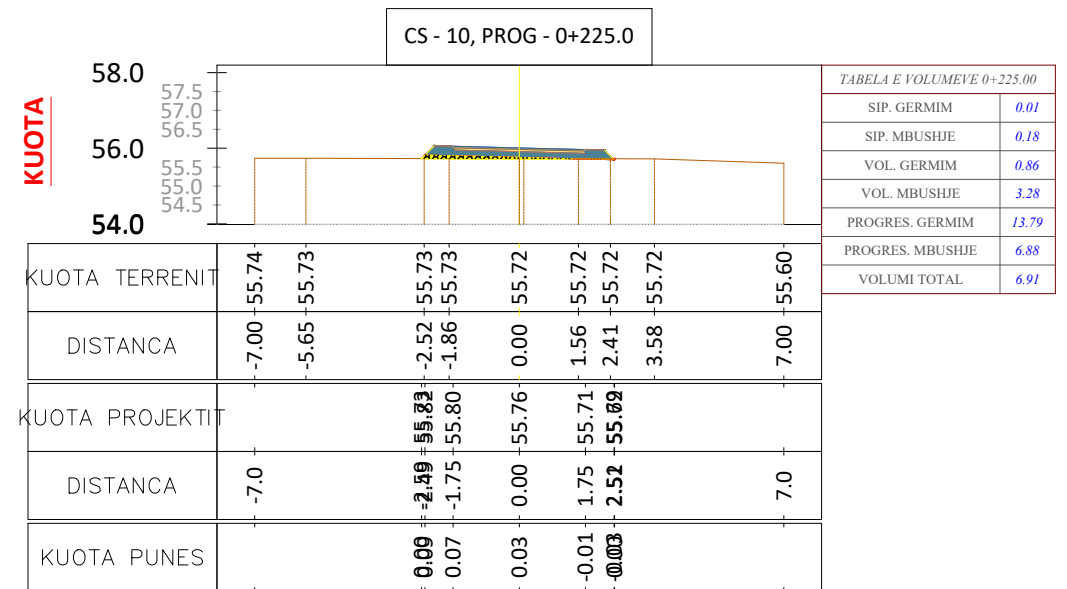
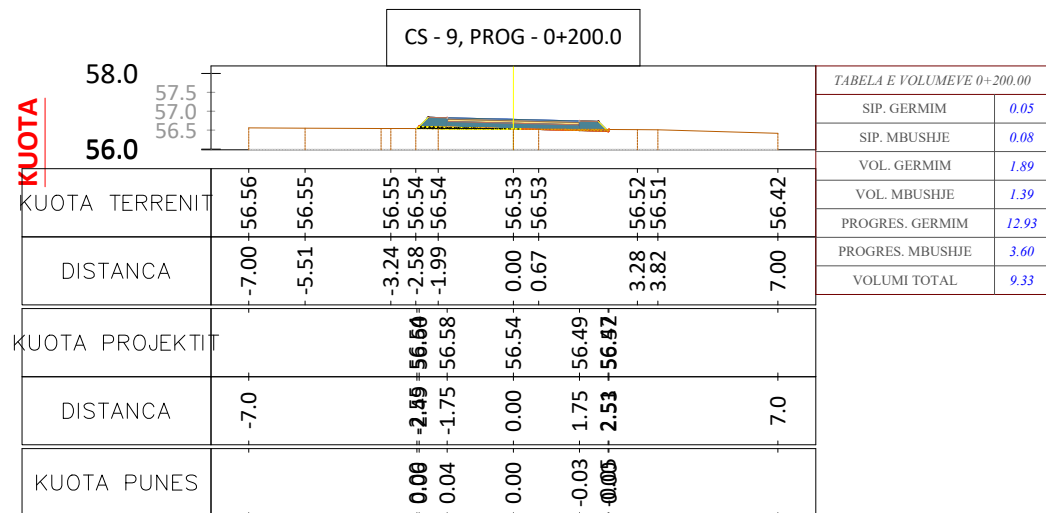
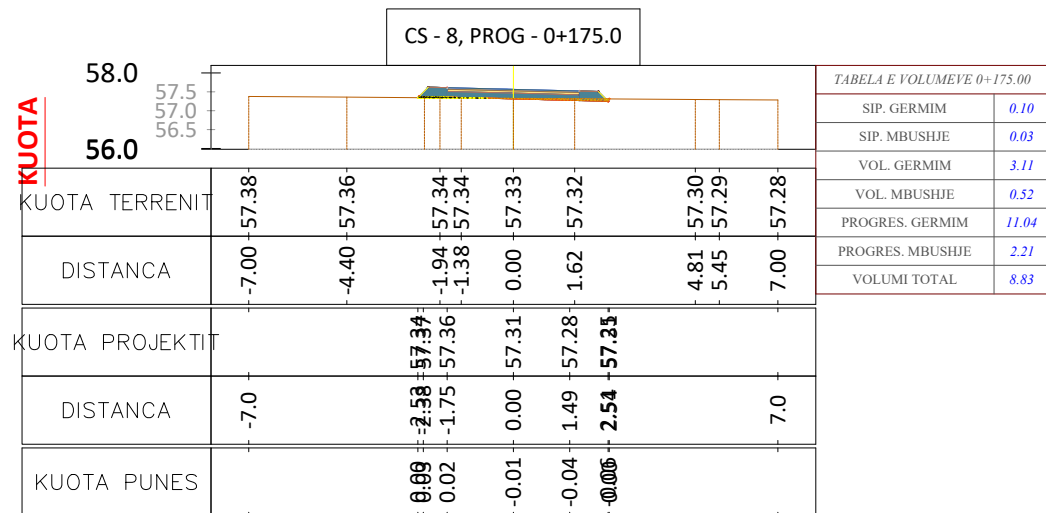
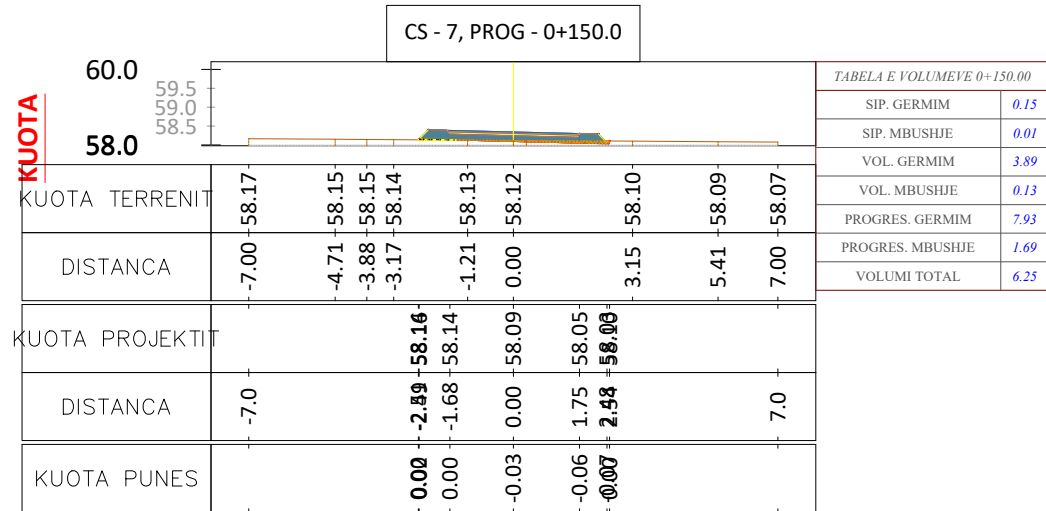


Porositi :
BASHKIA
MALESI E
MADHE

Projektoi:
"LENI-ING" sh.p.k
Liçense: N.2969

Adresa: Rr. Uran Pano, Pallati 12 kat, Kati 2
Mobile: 0682042270
Email: leni-ing@hotmail.com

| | | |
|---|----------------------------|--------------------------|
| Objekti: Sistemim asfaltim rruga Dreka | | |
| Faza: Projekt – Zbatim | | |
| Emërtimi i Fletës: PROFILI TERTHORE TIP | Shkalla: Sh 1:25 | Tiranë 2023 PT |



Porositi :
BASHKIA
MALESI E
MADHE

Projektoi:
"LENI-ING" sh.p.k
Liçense: N.2969

Adresa: Rr. Uran Pano, Pallati 12 kat, Kati 2
Mobile: 0682042270
Email: leni-ing@hotmail.com

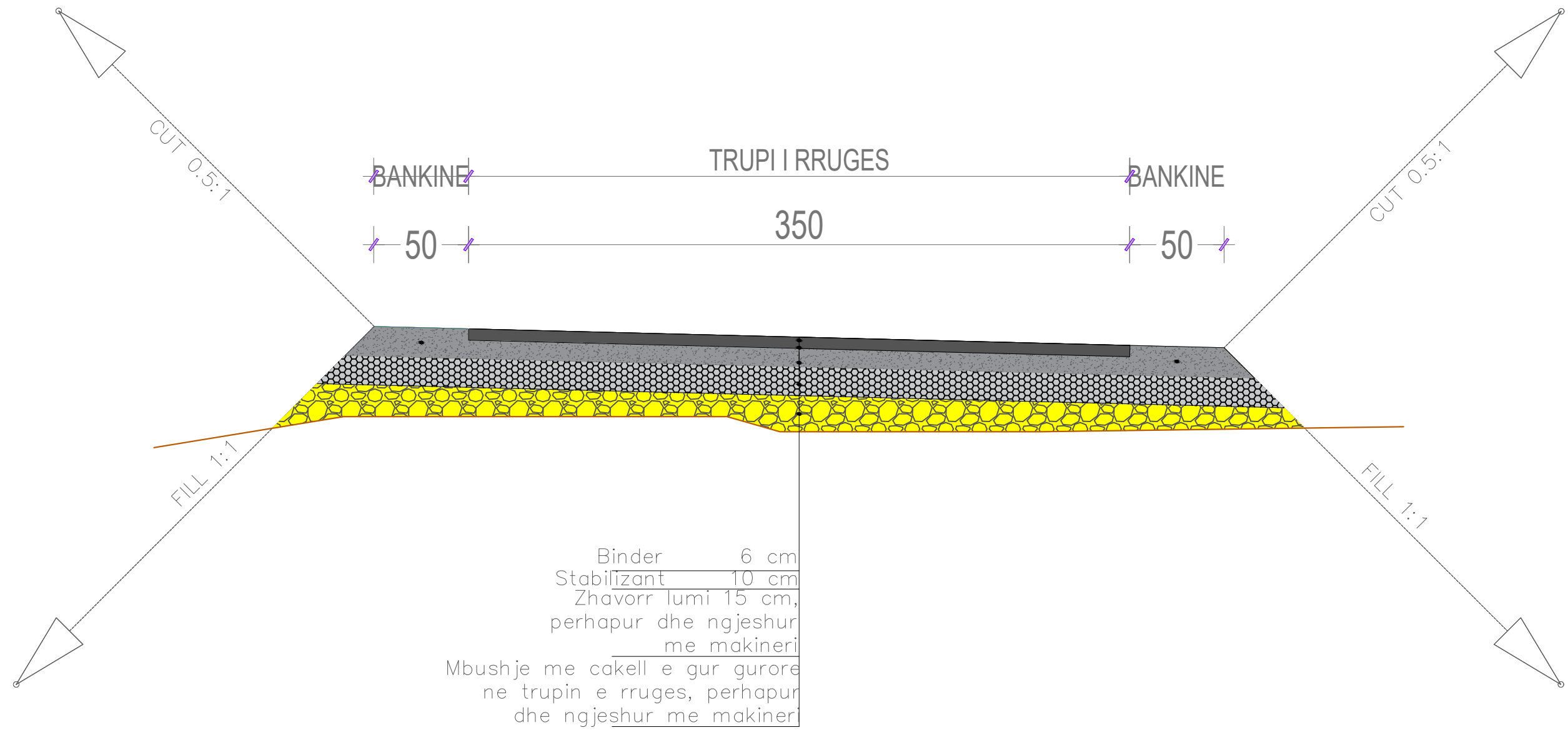
Objekti: Sistemim asfaltim rruga Dreka

Faza: Projekt - Zbatim

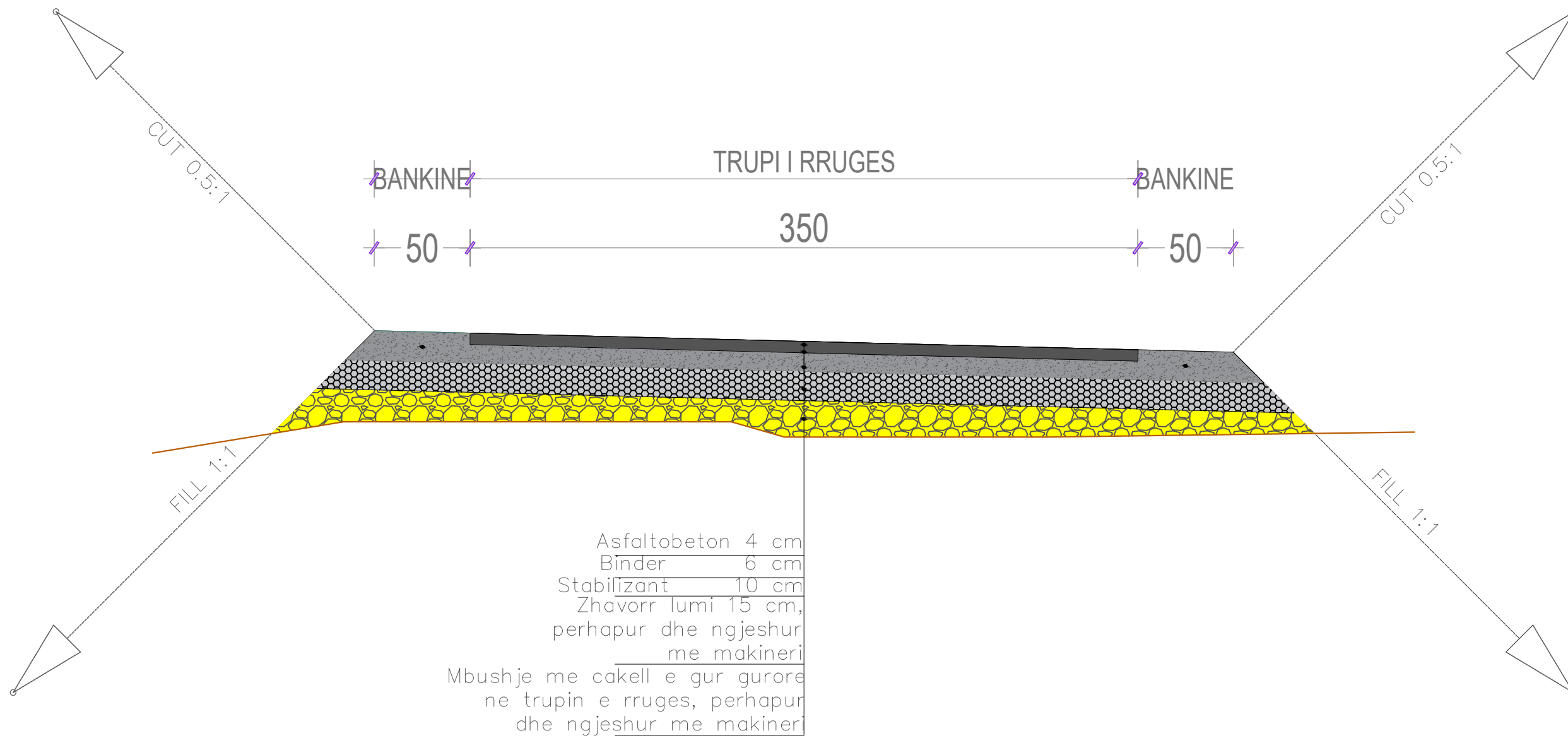
Emërtimi i Fletës:
PROFILAT
TERTHORE

Shkalla:
Sh 1:200

Tiranë 2023
PTTH
(3)



| | | |
|--------------------------------------|---|---|
| Porositi : BASHKIA MALESI E MADHE | Projektoi: "LENI-ING" sh.p.k Liçense: N.2969 <small>Adresa: Rr. Uran Pano, Pallati 12 kat, Kati 2 Mobile: 0682042270 Email: leni-ing@hotmail.com</small> | Objekti: Sistemim asfaltim rruga Dreka Faza: Projekt – Zbatim Emërtimi i Fletës: PROFILI TERTHORE TIP Shkalla: Sh 1:25 Tiranë 2023 PT (5) |
|--------------------------------------|---|---|

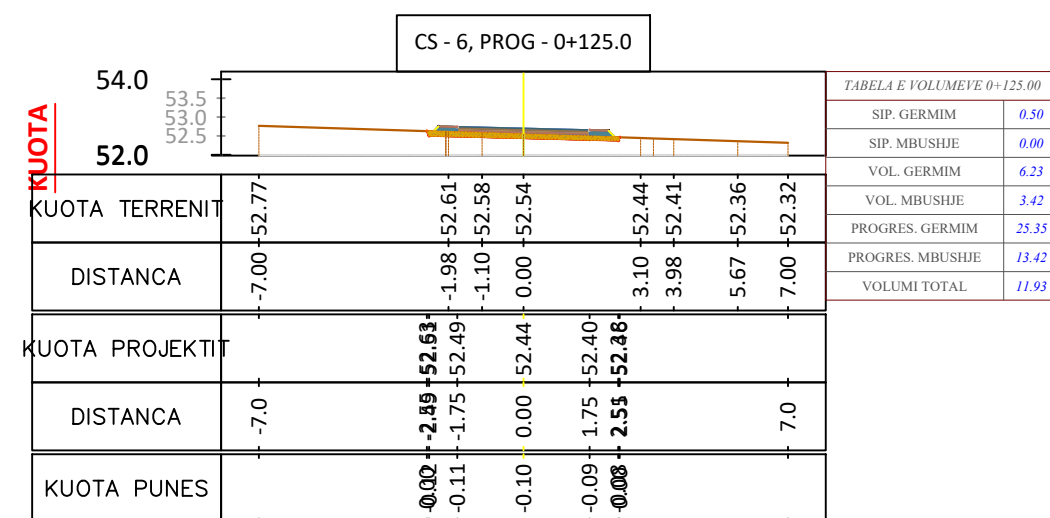
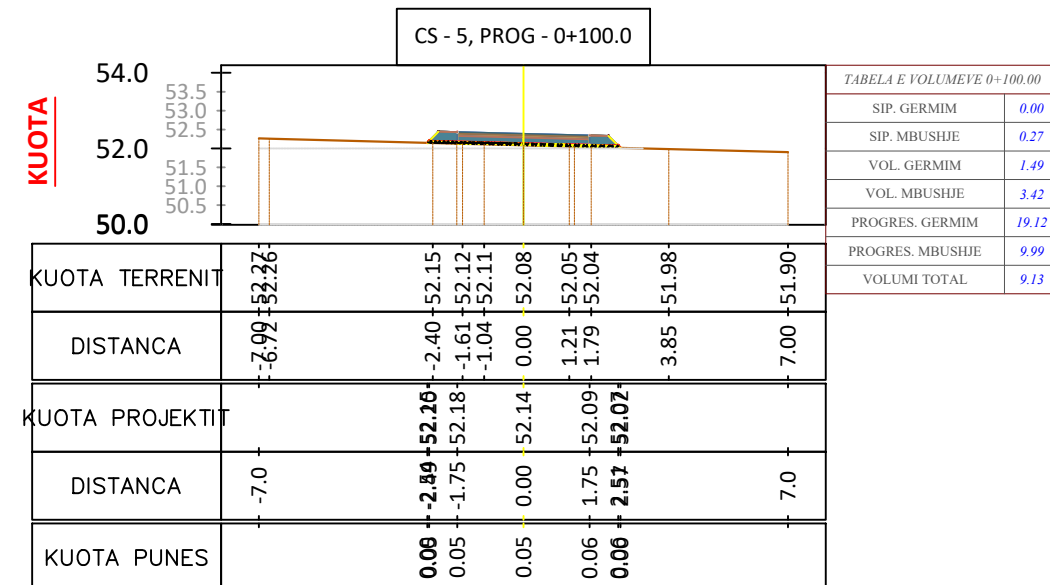
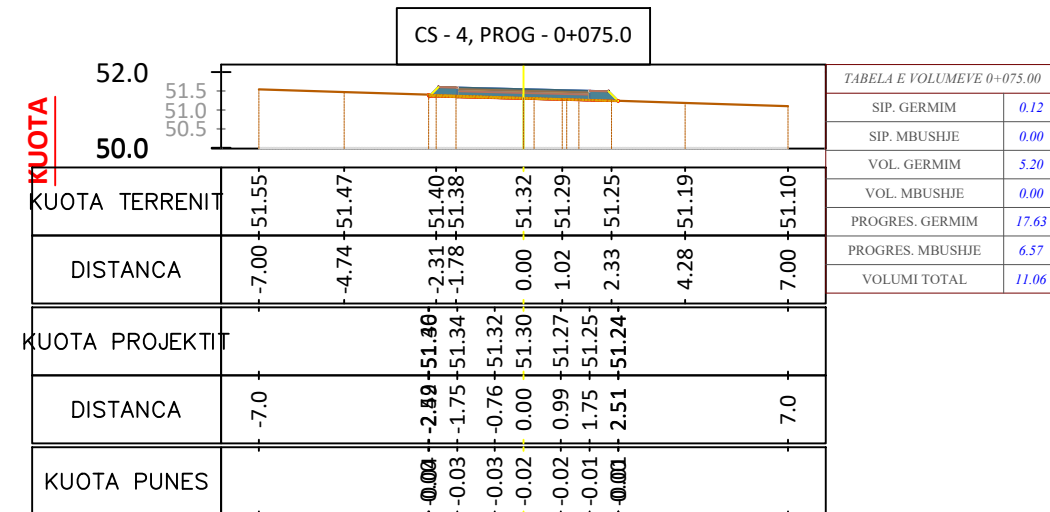
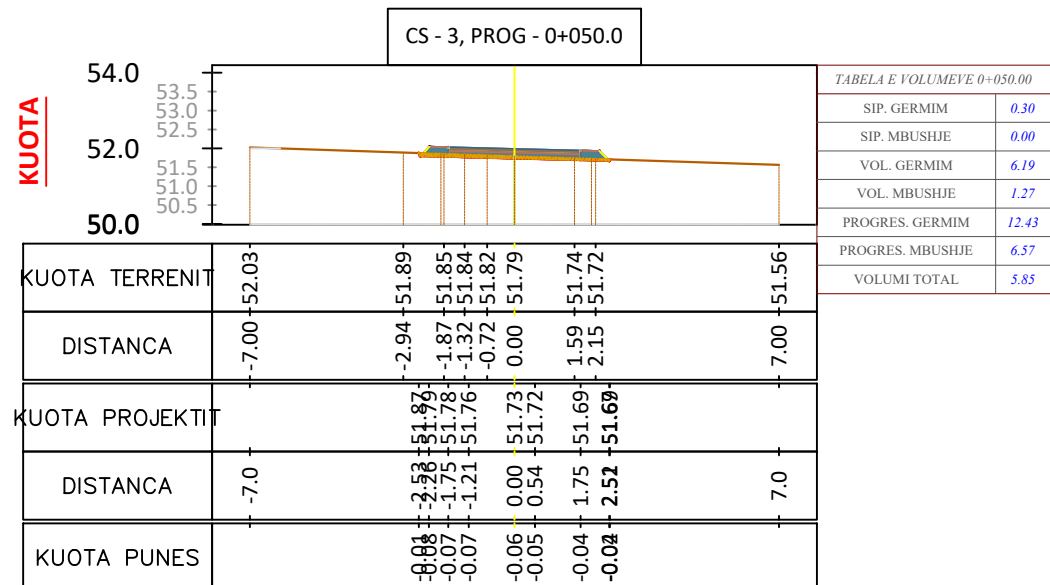
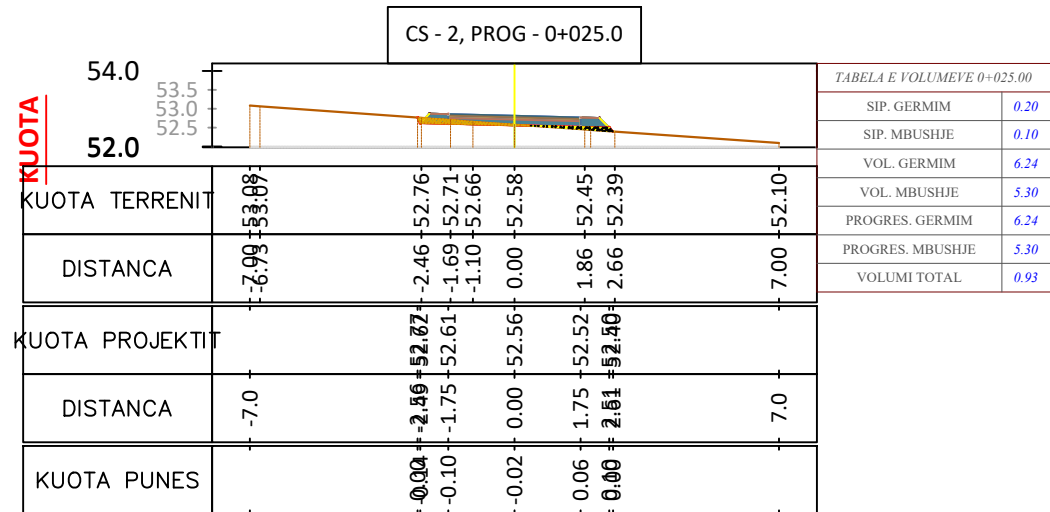
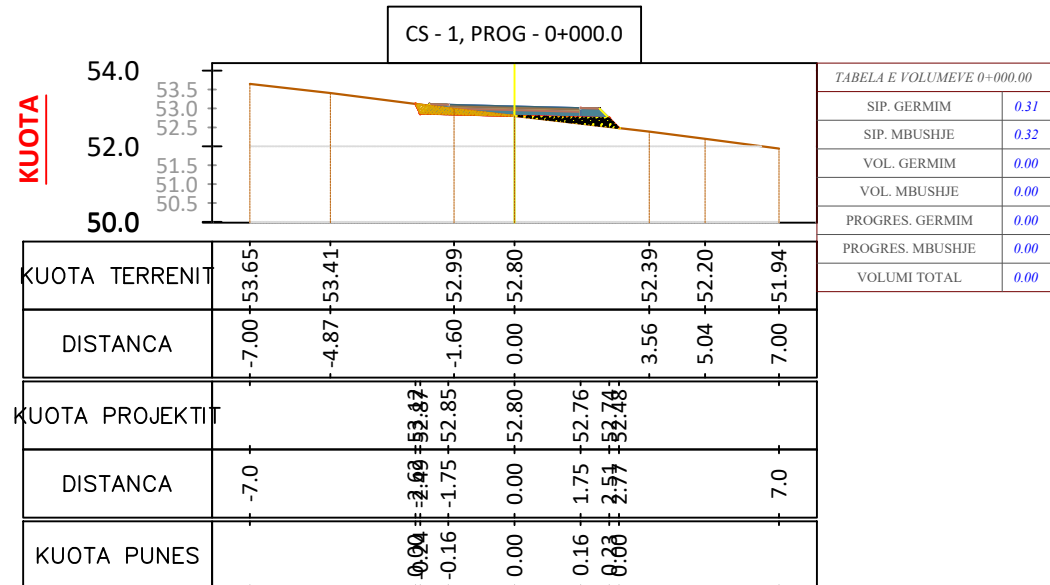


Porositi :
 BASHKIA
 MALESI E
 MADHE

Projektoi:
 "LENI-ING" sh.p.k
 Liçense: N.2969

Adresa: Rr. Uran Pano, Pallati 12 kat, Kati 2
 Mobile: 0682042270
 Email: leni-ing@hotmail.com

| | | |
|---|----------------------------|--------------------------|
| Objekti: Sistemim asfaltim rruga Dreka | | |
| Faza: Projekt – Zbatim | | |
| Emërtimi i Fletës: PROFILI TERTHORE TIP | Shkalla: Sh 1:25 | Tiranë 2023 PT (2) |



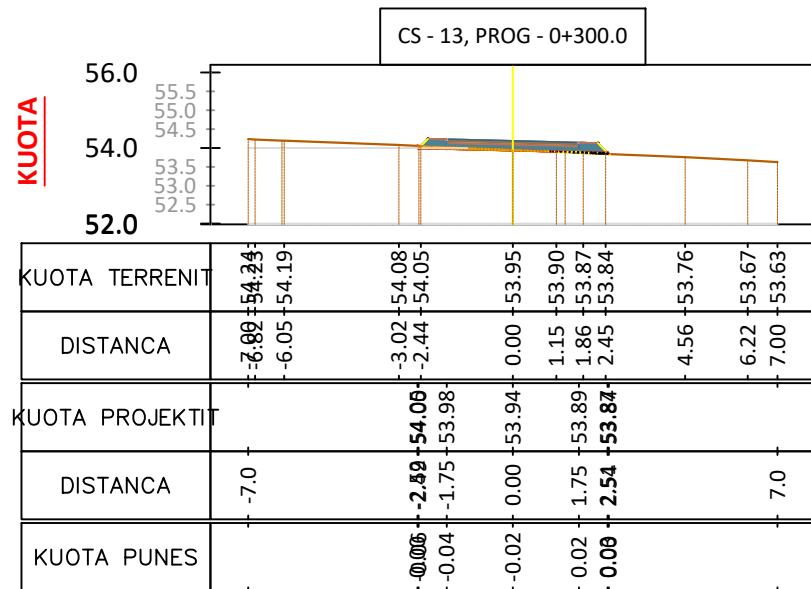


TABELA E VOLUMEVE 0+300.00

| | |
|------------------|-------|
| SIP. GERMIM | 0.10 |
| SIP. MBUSHJE | 0.02 |
| VOL. GERMIM | 1.63 |
| VOL. MBUSHJE | 1.39 |
| PROGRES. GERMIM | 47.35 |
| PROGRES. MBUSHJE | 36.12 |
| VOLUMI TOTAL | 11.23 |

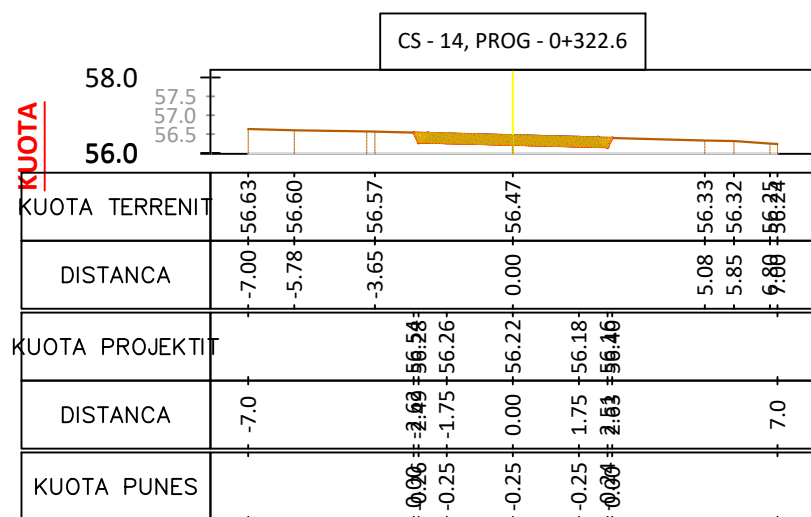


TABELA E VOLUMEVE 0+322.58

| | |
|------------------|-------|
| SIP. GERMIM | 1.28 |
| SIP. MBUSHJE | 0.00 |
| VOL. GERMIM | 15.55 |
| VOL. MBUSHJE | 0.28 |
| PROGRES. GERMIM | 62.90 |
| PROGRES. MBUSHJE | 36.40 |
| VOLUMI TOTAL | 26.50 |

TABELA VOLUMEVE

| PROGRESIVA | SIP. GERMIM | SIP. MBUSHJE | VOL. GERMIM | VOL. MBUSHJE | G. PROGRESIV | M. PROGRESIV | G-M |
|------------|-------------|--------------|-------------|--------------|--------------|--------------|-------|
| 0+00.00 | 0.31 | 0.32 | 0.00 | 0.00 | 0.00 | 0.00 | 0.00 |
| 0+25.00 | 0.20 | 0.10 | 6.24 | 5.30 | 6.24 | 5.30 | 0.93 |
| 0+50.00 | 0.30 | 0.00 | 6.19 | 1.27 | 12.43 | 6.57 | 5.85 |
| 0+75.00 | 0.12 | 0.00 | 5.20 | 0.00 | 17.63 | 6.57 | 11.06 |
| 1+00.00 | 0.00 | 0.27 | 1.49 | 3.42 | 19.12 | 9.99 | 9.13 |
| 1+25.00 | 0.50 | 0.00 | 6.23 | 3.42 | 25.35 | 13.42 | 11.93 |
| 1+50.00 | 0.25 | 0.03 | 9.39 | 0.40 | 34.74 | 13.82 | 20.92 |
| 1+75.00 | 0.07 | 0.25 | 4.09 | 3.48 | 38.83 | 17.30 | 21.53 |
| 2+00.00 | 0.00 | 0.22 | 0.93 | 5.84 | 39.76 | 23.14 | 16.63 |
| 2+25.00 | 0.15 | 0.11 | 1.94 | 4.06 | 41.70 | 27.20 | 14.50 |
| 2+50.00 | 0.07 | 0.21 | 2.73 | 3.90 | 44.43 | 31.10 | 13.33 |
| 2+75.00 | 0.04 | 0.09 | 1.28 | 3.62 | 45.71 | 34.72 | 10.99 |
| 3+00.00 | 0.10 | 0.02 | 1.63 | 1.39 | 47.35 | 36.12 | 11.23 |
| 3+22.58 | 1.28 | 0.00 | 15.55 | 0.28 | 62.90 | 36.40 | 26.50 |

Porositi :
BASHKIA
MALESI E
MADHE

Projektoi:
"LENI-ING" sh.p.k
Liçense: N.2969

Adresa: Rr. Uran Pano, Pallati 12 kat, Kati 2
Mobile: 0682042270
Email: leni-ing@hotmail.com

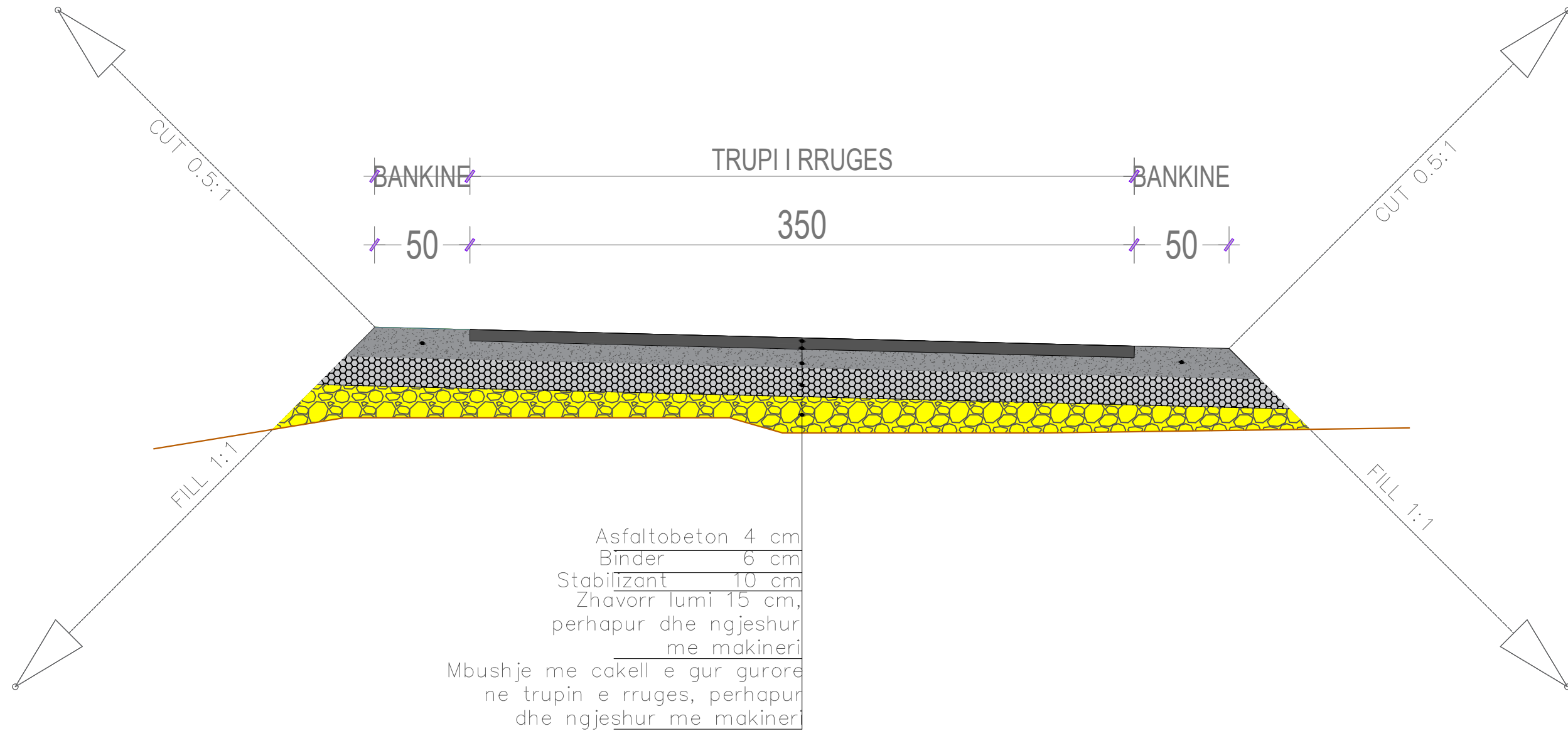
Objekti: Sistemim asfaltim rruga Dreka

Faza: Projekt - Zbatim

Emërtimi i Fletës:
PROFILAT
TERTHORE

Shkalla:
Sh 1:200

Tiranë 2023
PTTH
(7)



Porositi :
BASHKIA
MALESI E
MADHE

Projektoi:
"LENI-ING" sh.p.k
Liçense: N.2969

Adresa: Rr. Uran Pano, Pallati 12 kat, Kati 2
Mobile: 0682042270
Email: leni-ing@hotmail.com

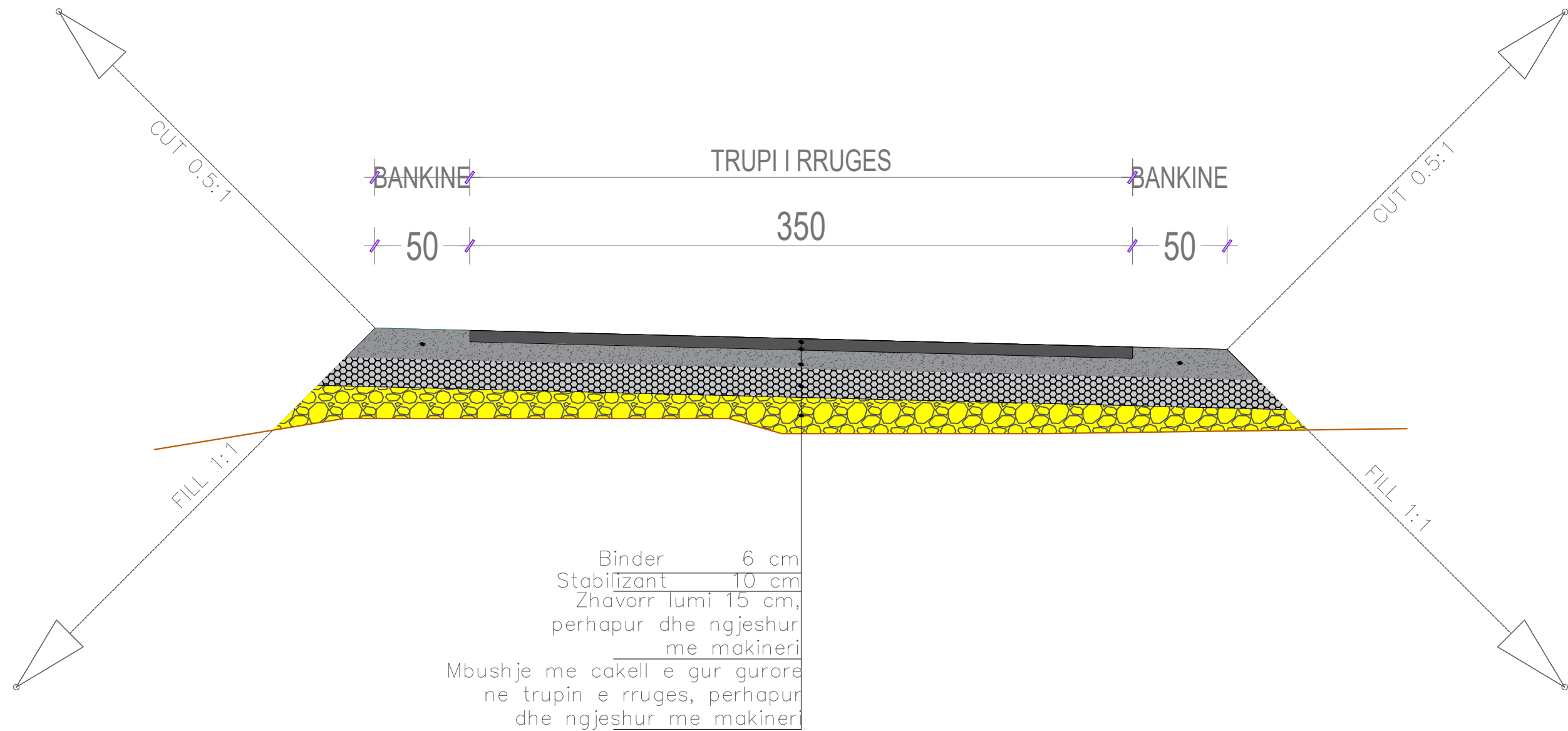
Objekti: RIKONSTRUKSION RRUGA "SHKOLLA DREKAJ HOT"

Faza: Projekt – Zbatim

Emërtimi i Fletës:
PROFILI
TERTHORE TIP

Shkalla:
Sh 1:25

Tiranë 2023
PT
(3)



Porositi :
BASHKIA
MALESI E
MADHE

Projektoi:
"LENI-ING" sh.p.k
Liçense: N.2969

Adresa: Rr. Uran Pano, Pallati 12 kat, Kati 2
Mobile: 0682042270
Email: leni-ing@hotmail.com

| | | |
|--|----------|-------------|
| Objekti: RIKONSTRUKSION RRUGA "SHKOLLA DREKAJ HOT" | | |
| Faza: Projekt – Zbatim | | |
| Emërtimi i Fletës: | Shkalla: | Tiranë 2023 |
| PROFILI TERTHORE TIP | Sh 1:25 | PT (4) |