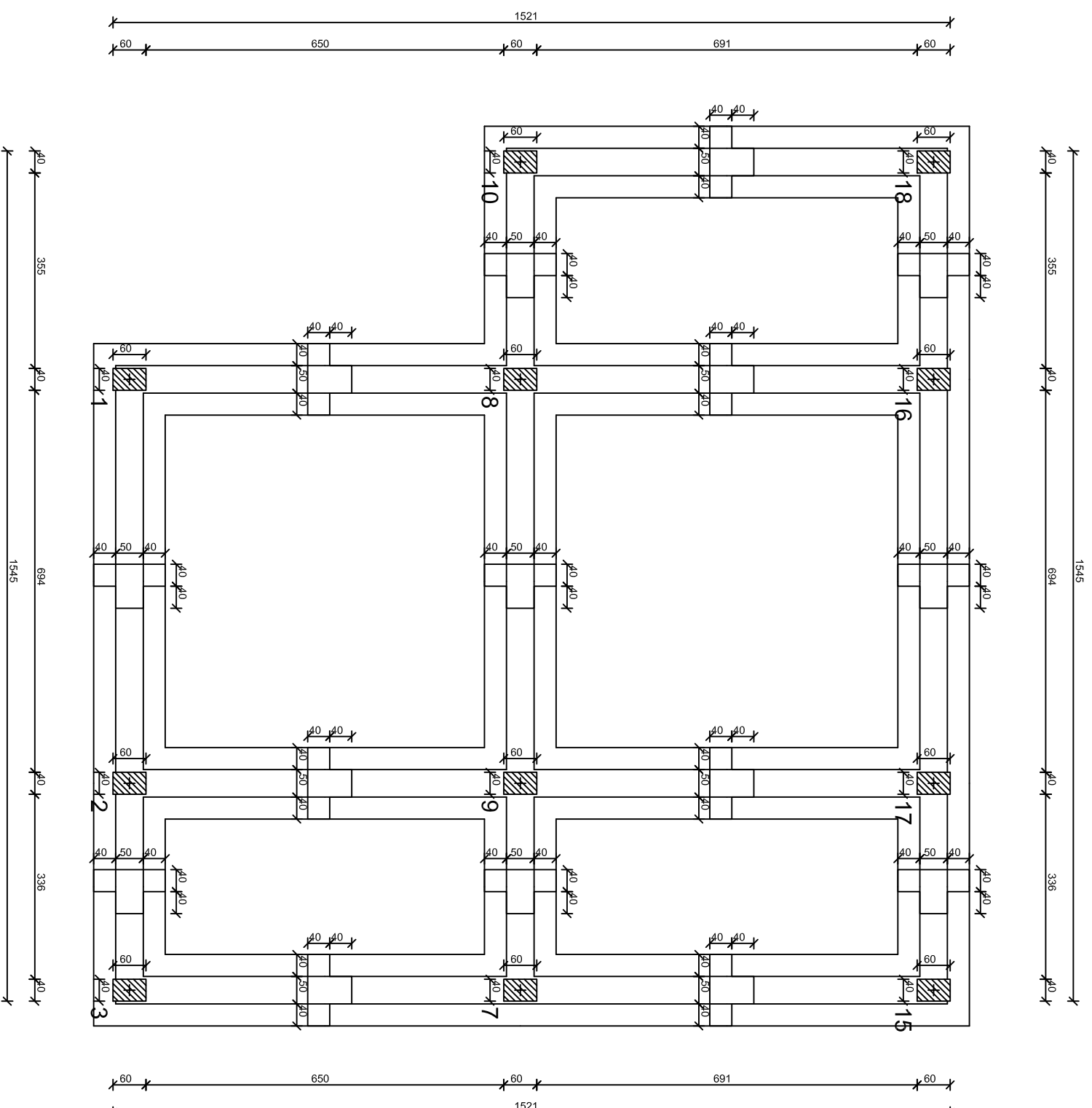


PROJEKT KONSTRUKTIV

OBJEKTI: "MUZEU I KALASE LEZHE

PLANI I THEMELIWE KUOTA ±0.00 SHK 1:100



INVESTITOR: BASHKIA LEZHE

OBJEKTI: MUZEU I KALASE LEZHE

EMERTIMI I FLETES:

PLANI I THEMELIWE
KUOTA ±0.00

KONSTR. NDRIGIM ALLKAJ

KONSTR. ENISA KOKA

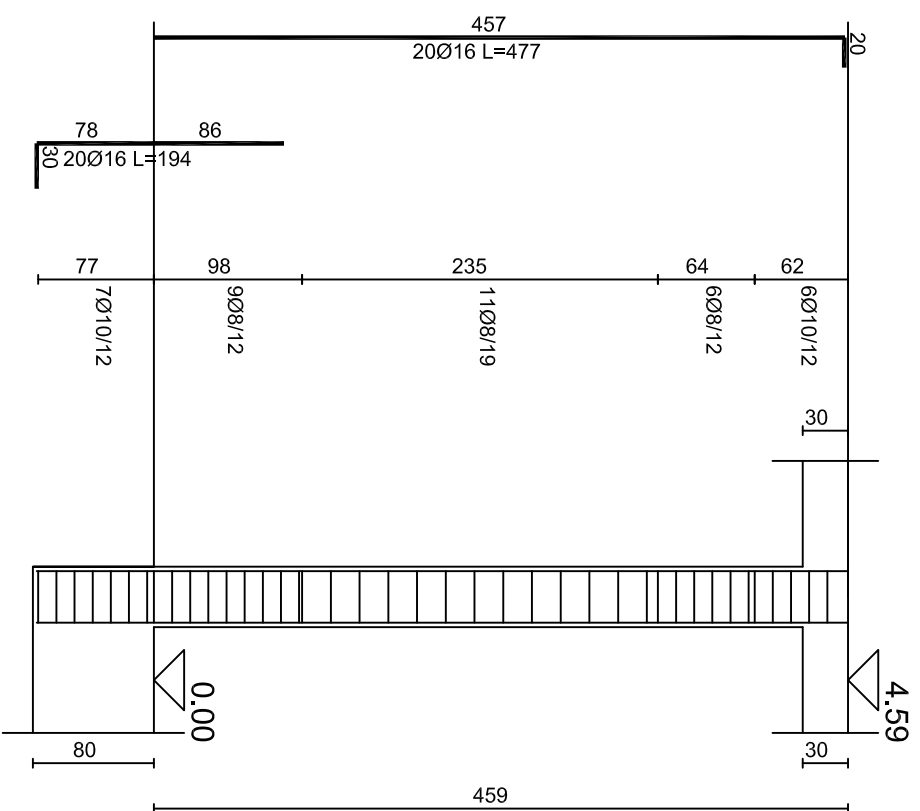
KONSTR. ANXHIELA ALLKA

KONSTR. DENI SULA

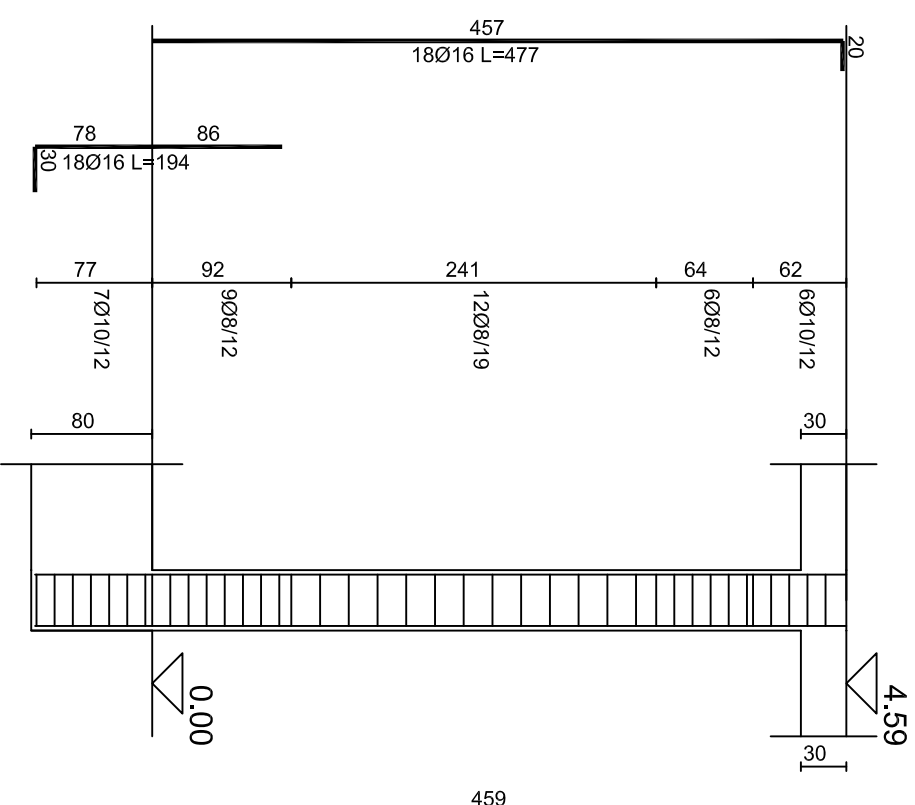
FLETA
NR. K-01

DATA

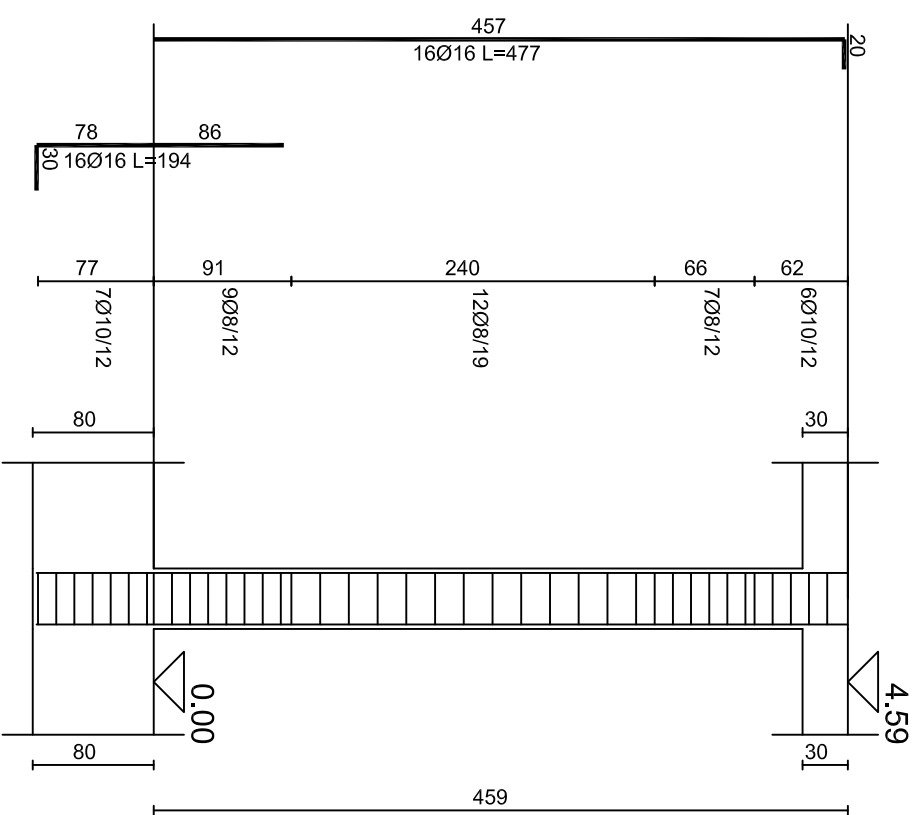
ARMIMI I KOLLONAVE SHK 1:50



KOLLONA 1



KOLLONA 3



KOLLONA 2

INVESTITOR: BASHKIA LEZHE

OBJEKTI: MUZEU I KALASE LEZHE

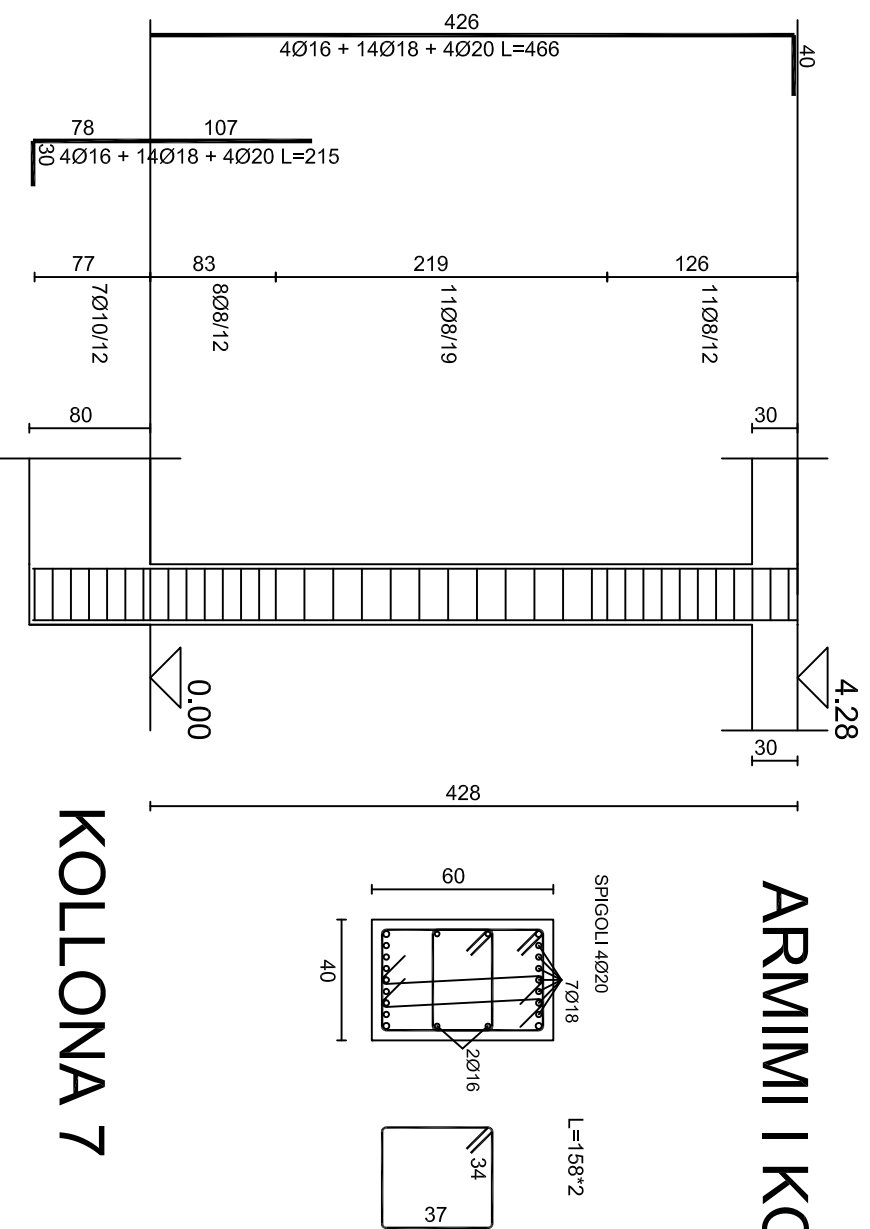
EMERTIMI I FLETES:

ARMIMI I KOLLONAVE

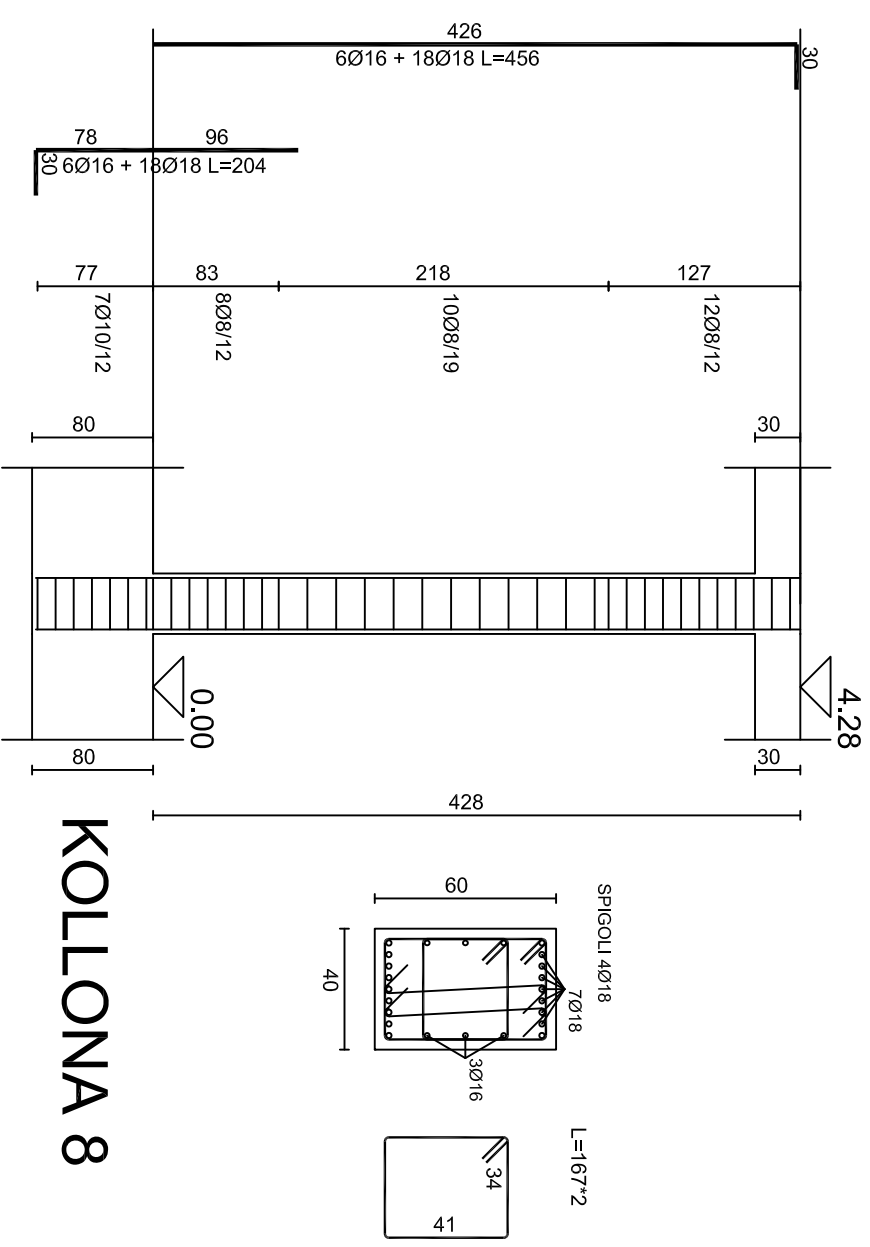
KONSTR.	NDRIQIM ALLKAJ
KONSTR.	ENISA KOKA
KONSTR.	ANXHIELA ALLKA
KONSTR.	DENI SULA

FLETA NR. K-02
DATA

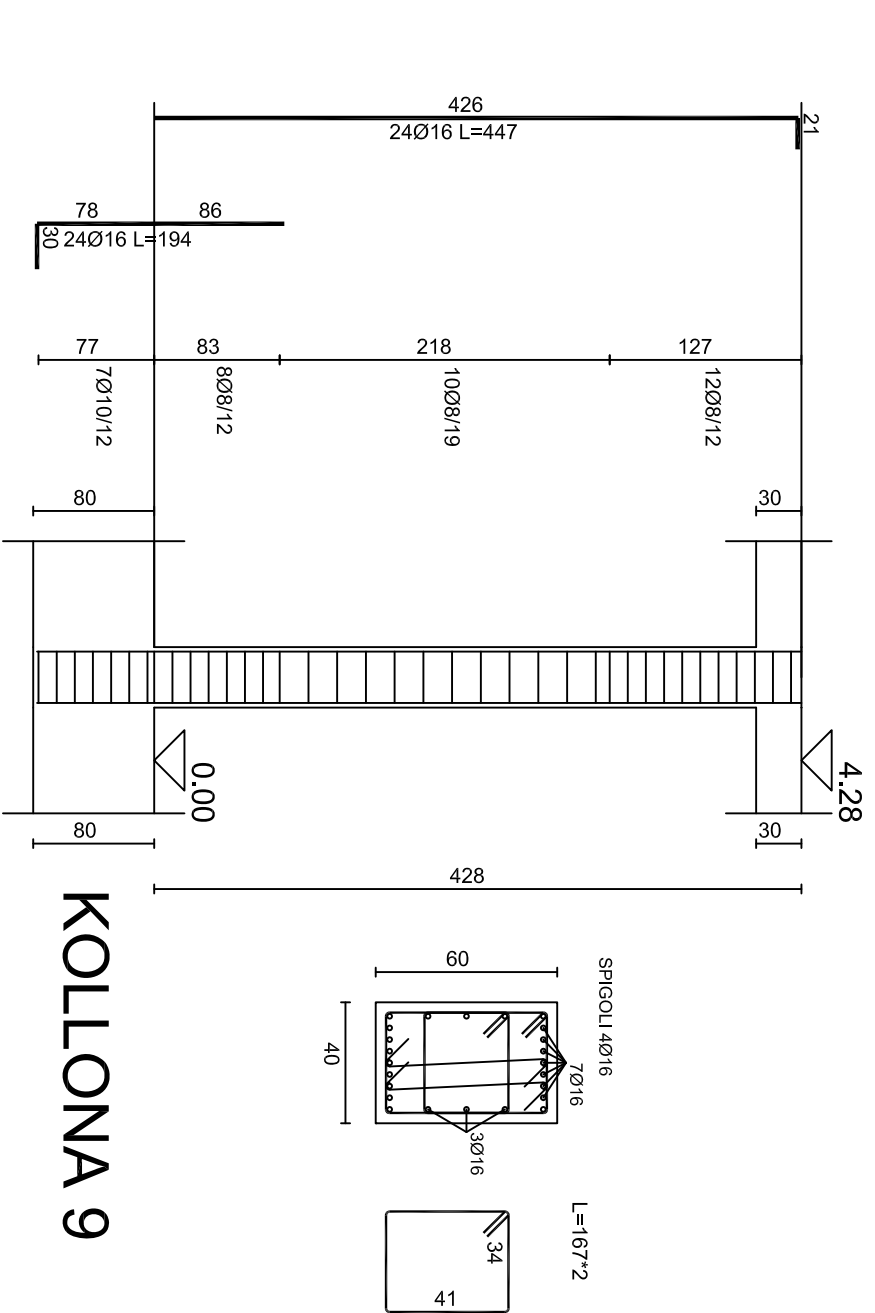
ARMIMI I KOLLONAVE SHK 1:50



KOLLONA 7



KOLLONA 8



KOLLONA 9

INVESTITOR: BASHKIA LEZHE

OBJEKTI: MUZEU I KALASE LEZHE

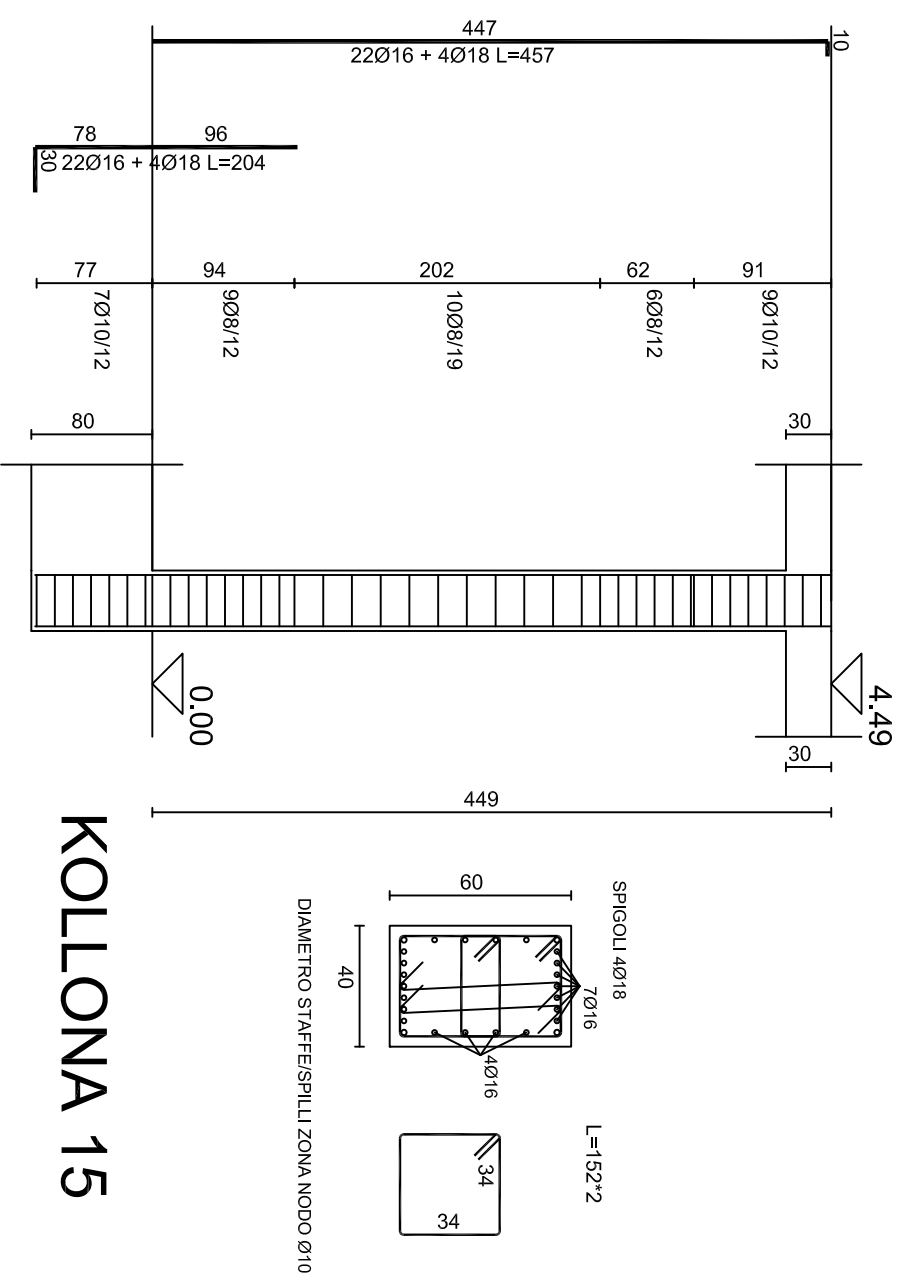
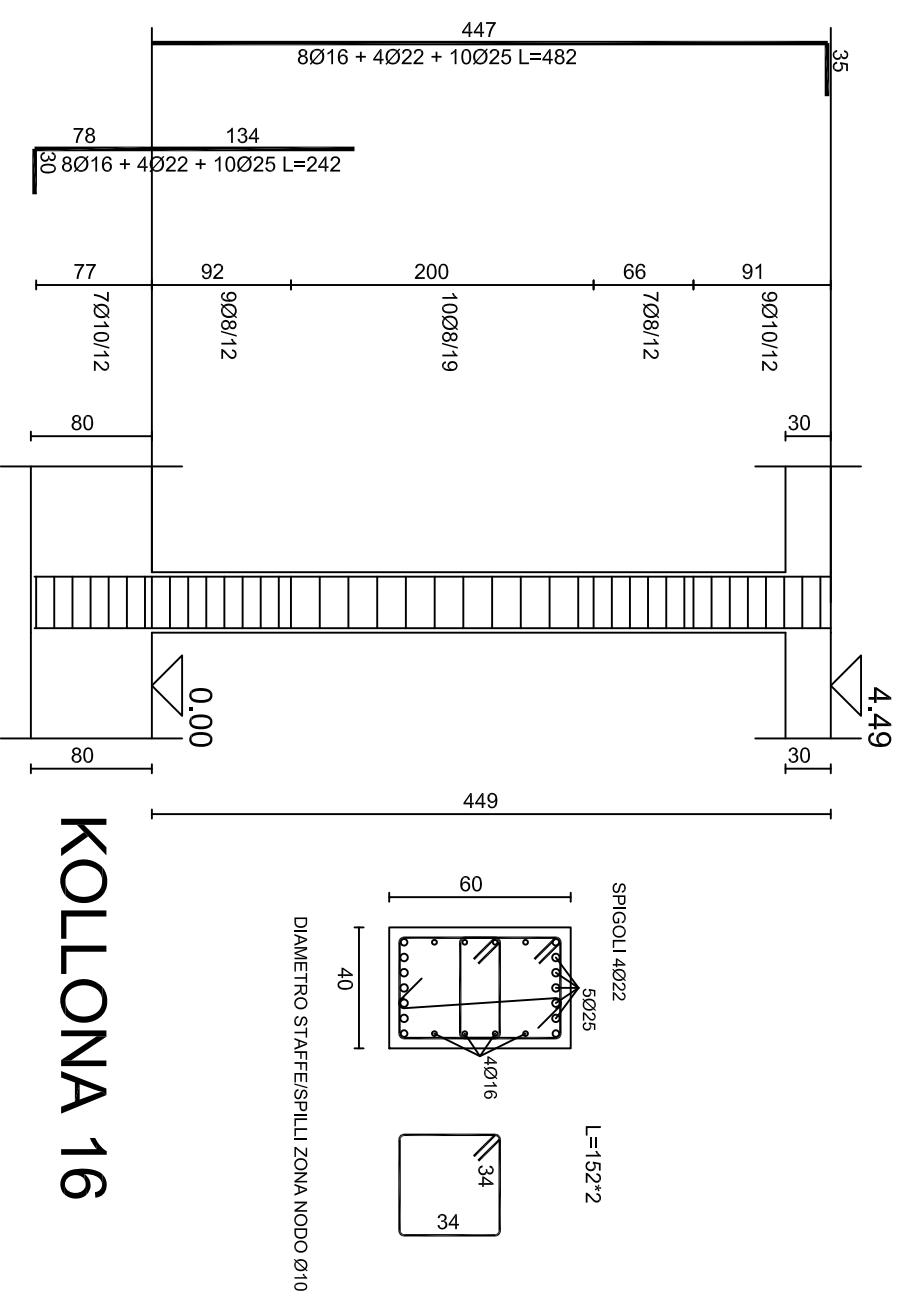
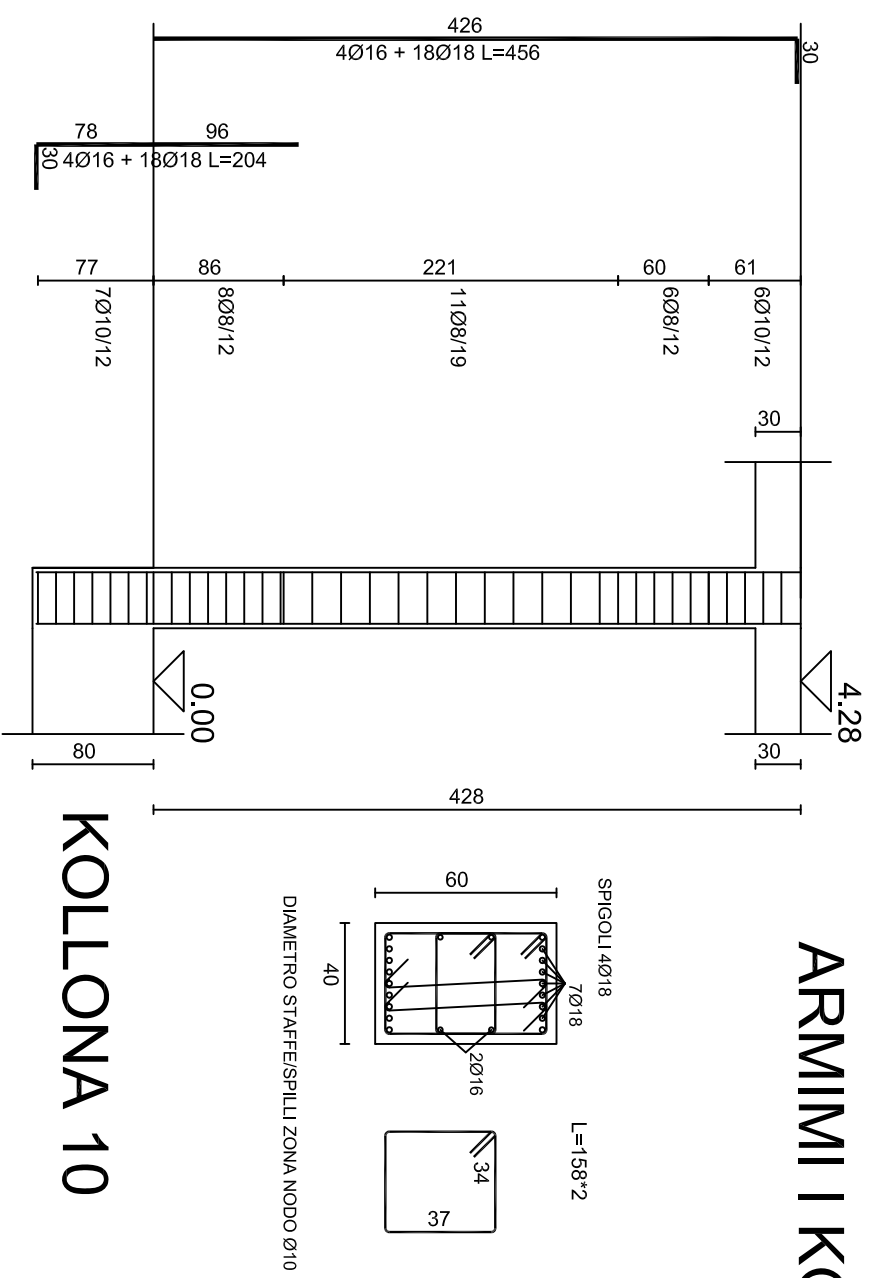
EMERTIMI I FLETES:

ARMIMI I KOLLONAVE

KONSTR.	NDRIQIM ALLKAJ
KONSTR.	ENISA KOKA
KONSTR.	ANXHIELA ALLKA
KONSTR.	DENI SULA

FLETA
NR. **K-03**
DATA

ARMIMI I KOLLONAVE SHK 1:50



INVESTITOR: BASHKIA LEZHE

OBJEKTI: MUZEU I KALASE LEZHE

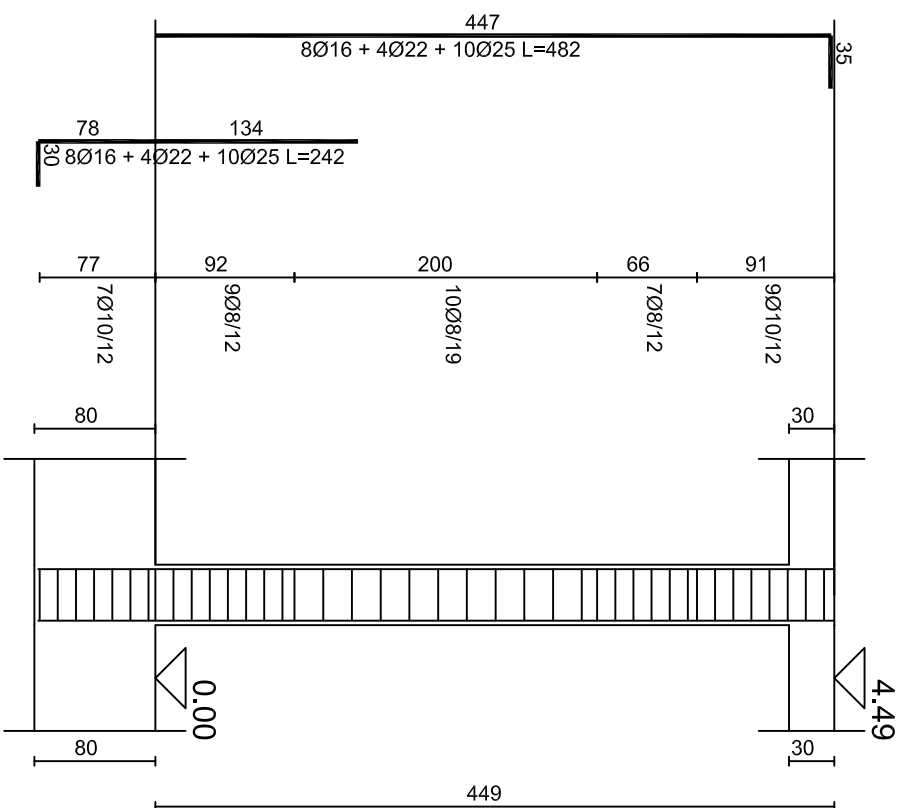
EMERTIMI I FLETES:

ARMIMI I KOLLONAVE

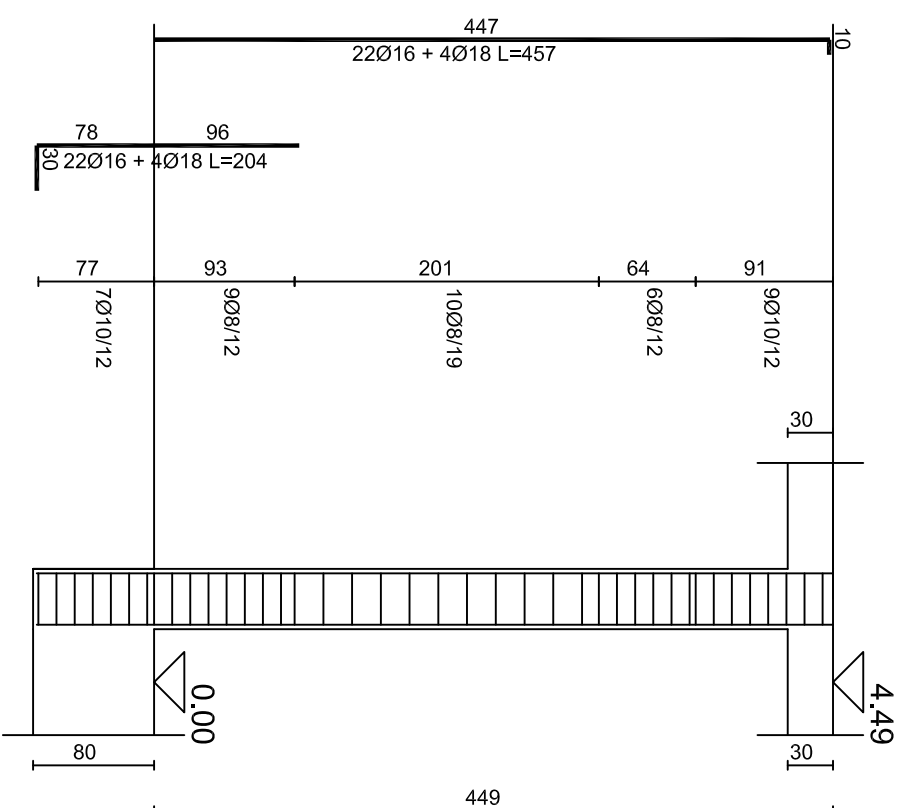
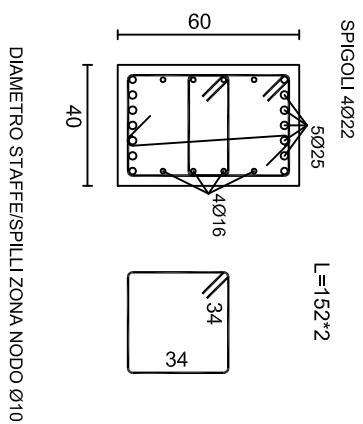
KONSTR. NDRIGIM ALLKAJ
 KONSTR. ENISA KOKA
 KONSTR. ANXHELA ALLKA
 KONSTR. DENI SULA

FLETA NR. K-04
 DATA

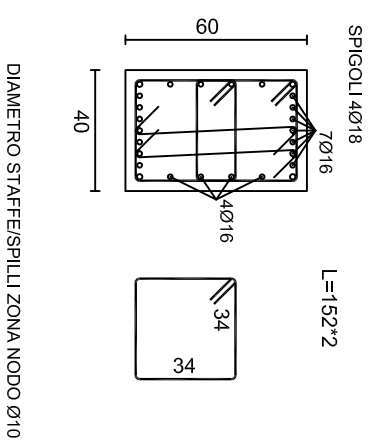
ARMIMI I KOLLONAVE SHK 1:50



KOLLONA 17



KOLLONA 18



INVESTITOR: BASHKIA LEZHE

OBJEKTI: MUZEU I KALASE LEZHE

EMERTIMI I FLETES:

ARMIMI I KOLLONAVE

FLETA
NR. K-05
DATA

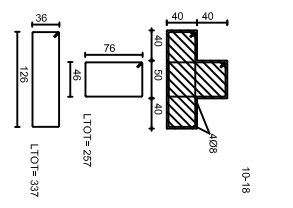
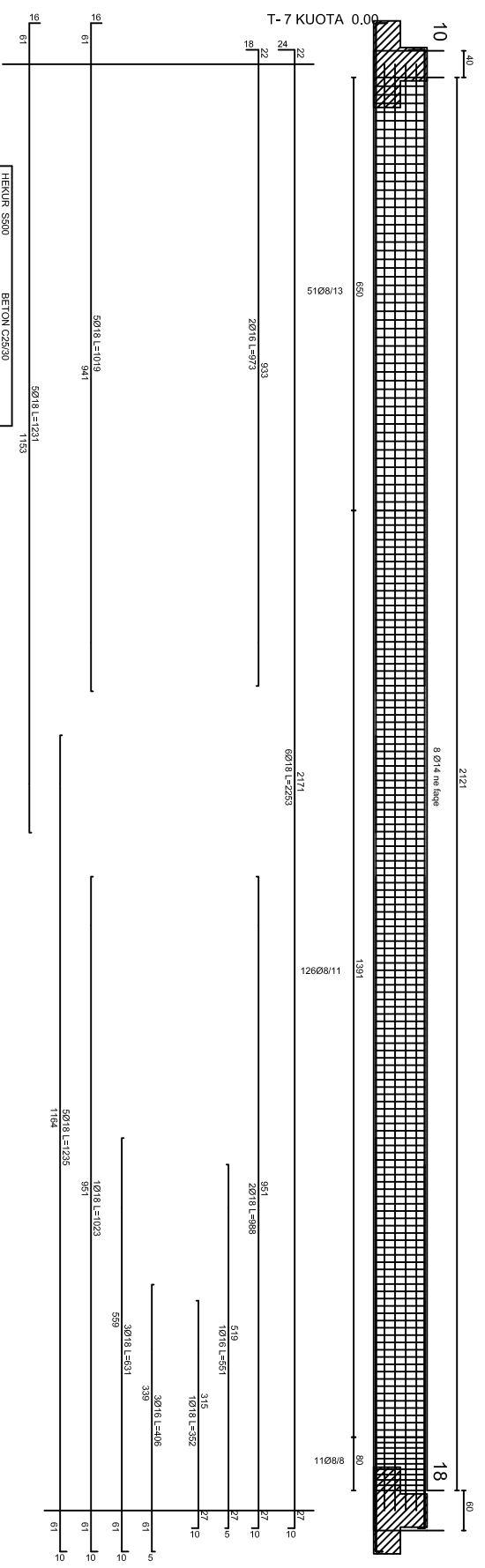
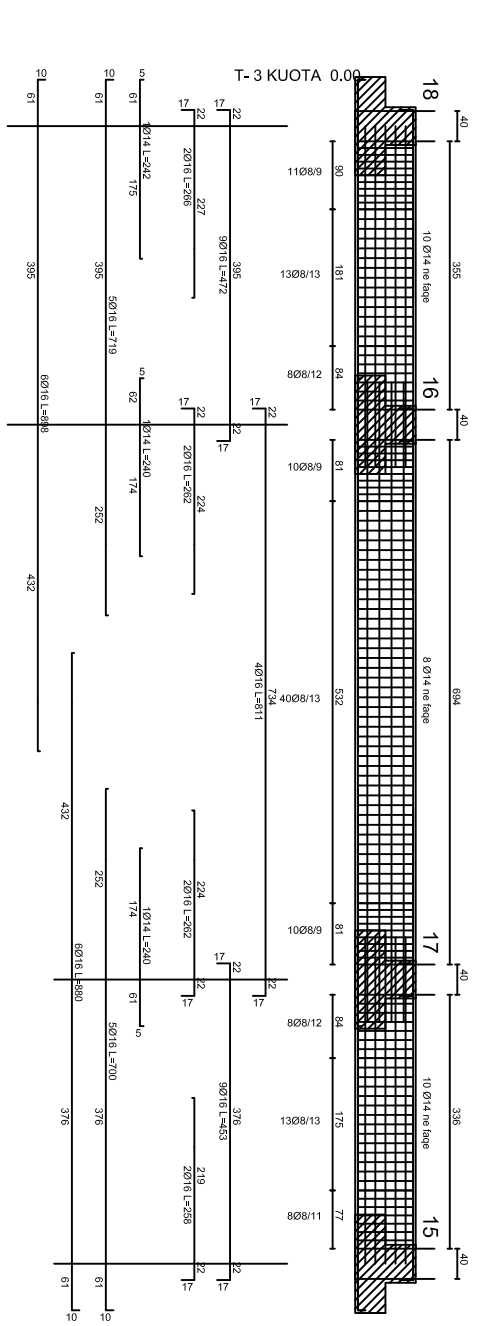
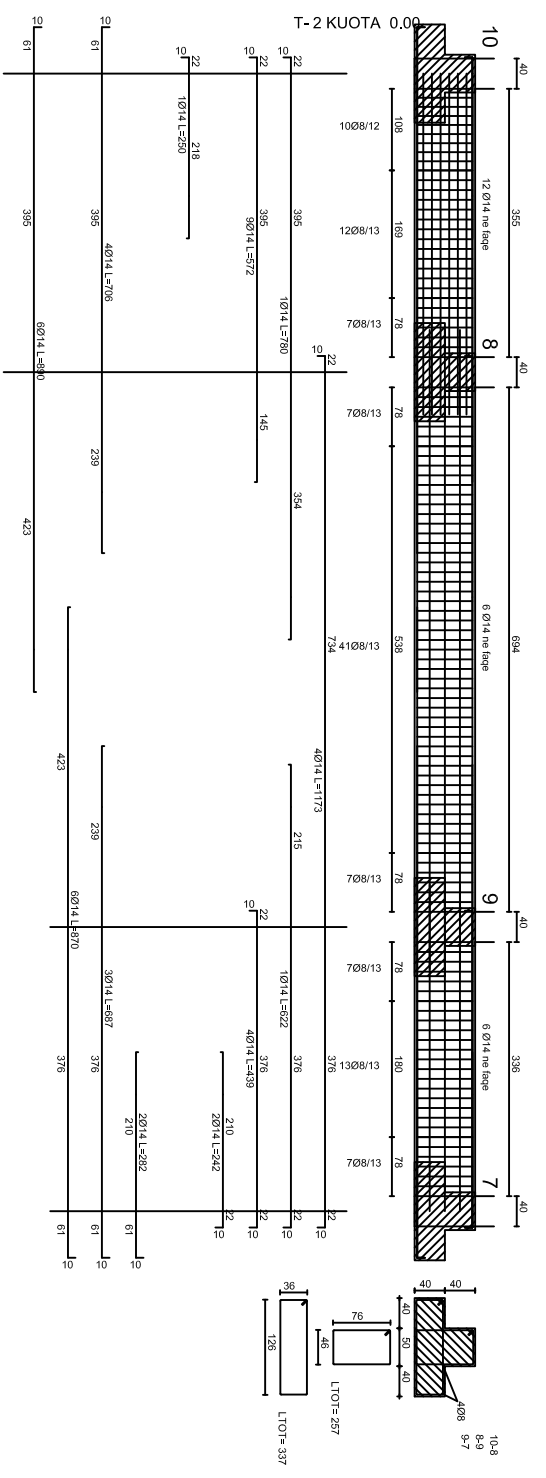
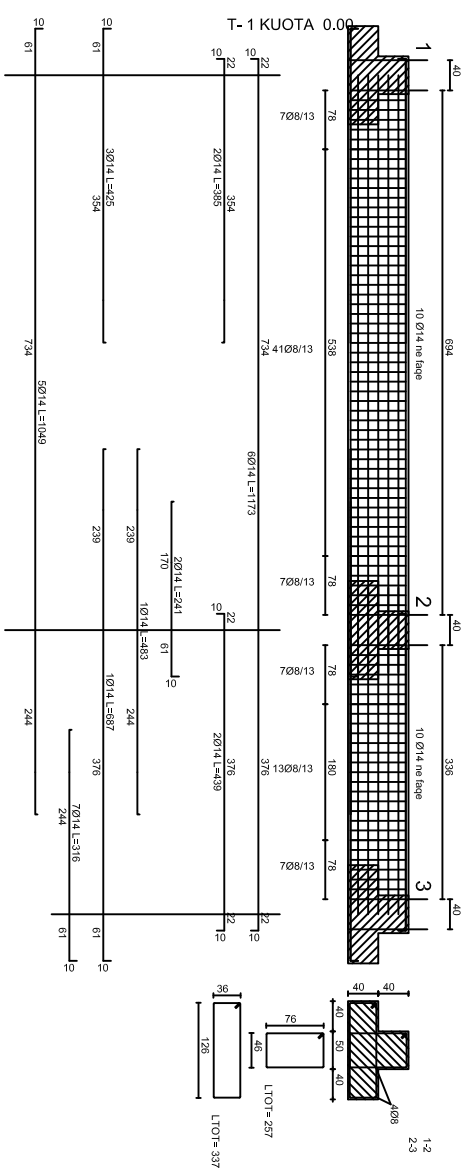
KONSTR. NDRIGIM ALLKAJ

KONSTR. ENISA KOKA

KONSTR. ANXHHELA ALLKA

KONSTR. DENI SULA

ARMIMI I TRAREVE TE THEMELIT SHK 1:100



INVESTITOR: BASHKIA LEZHE

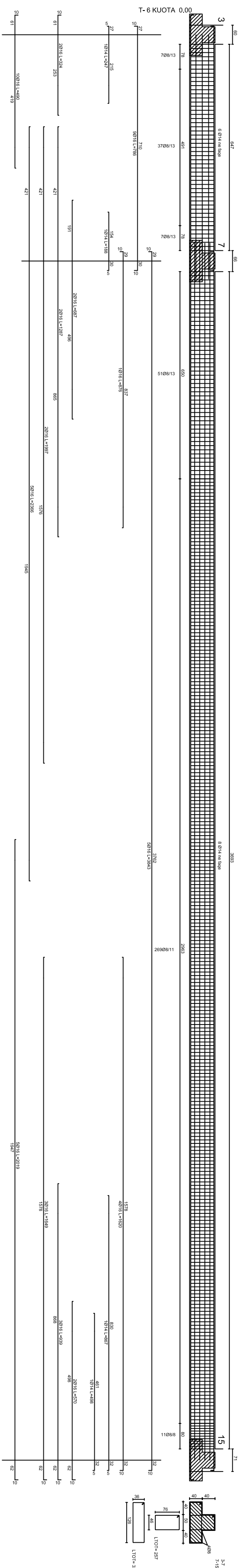
OBJEKTI: MUZEU I KALASE LEZHE

EMERTIMI I FLETES:
 ARMIMI I TRAREVE TE
 THEMELIT

KONSTR. NDRIGIM ALLKAU
 KONSTR. ENISA KOKA
 KONSTR. ANXHIELA ALLKA
 KONSTR. DENI SULA

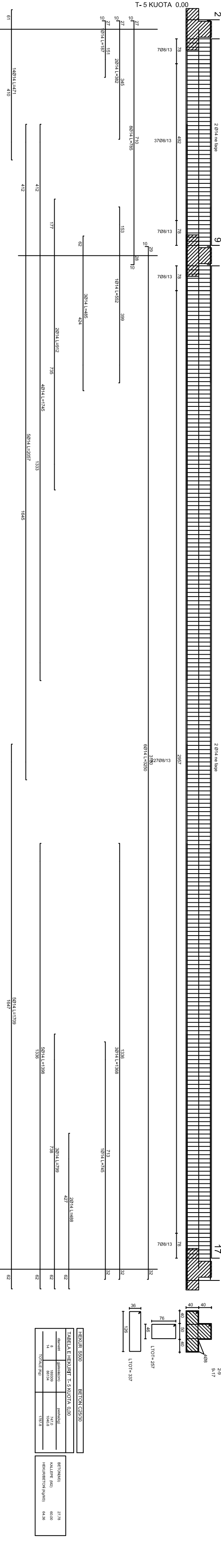
FLETA NR. K-06
 DATA

ARMIMI I TRAREVE TE THEMELIT SHK 1:100



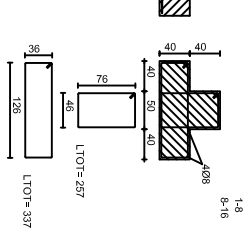
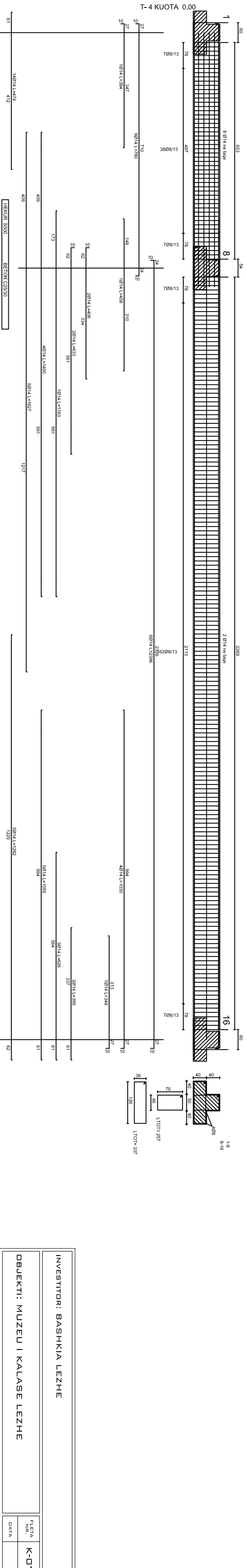
HEKUR S500 BETON C25/30

TABELA E HEKURIT T-6 KUOTA 0.00		BETONIM	
diçm (mm)	gjatësia (mm)	mbledhje	mbledhje
16	2302	602.5	31.97
18	7288	1238.5	71.47
TOTALI (kg)		2850.0	62.32



HEKUR S500 BETON C25/30

TABELA E HEKURIT T-5 KUOTA 0.00		BETONIM	
diçm (mm)	gjatësia (mm)	mbledhje	mbledhje
16	2302	602.5	27.71
18	7288	1238.5	62.00
TOTALI (kg)		1872.0	64.38

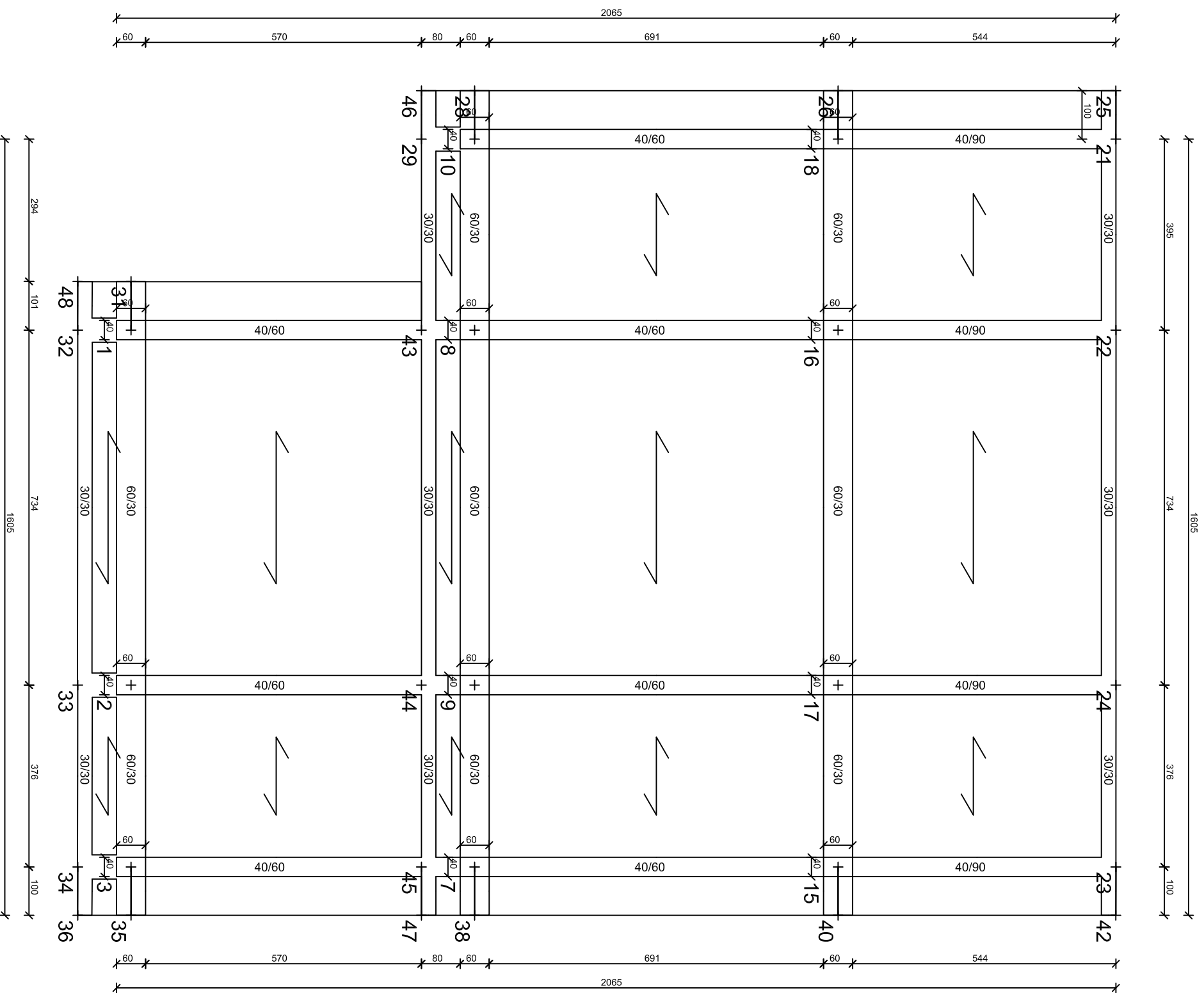


HEKUR S500 BETON C25/30

TABELA E HEKURIT T-4 KUOTA 0.00		BETONIM	
diçm (mm)	gjatësia (mm)	mbledhje	mbledhje
16	2302	602.5	21.03
18	7288	1238.5	47.26
TOTALI (kg)		1872.0	68.43

INVESTITOR: BASHKIA LEZHE		FLETJA NR. K-07	
OBJEKTI: MUZEU I KALASE LEZHE		DATA	
EMERTIMI I FLETES:		KONSTR. NDRIQIM ALLKAU	
ARMIMI I TRAREVE TE THEMELIT		KONSTR. ENISA KOKA	
		KONSTR. ANXHIELA ALLKA	
		KONSTR. DENI SULA	

PLANI I STRUKTURAVE KUOTA +4.25 SHK 1:100



INVESTITOR: BASHKIA LEZHE

OBJEKTI: MUZEU I KALASE LEZHE

EMERTIMI I FLETES:

PLANI I STRUKTURAVE
KUOTA +4.25

KONSTR.	NDRIQIM ALLKAJ
KONSTR.	ENISA KOKA
KONSTR.	ANXHIELA ALLKA
KONSTR.	DENI SULA

FLETA NR.	K-08
DATA	

